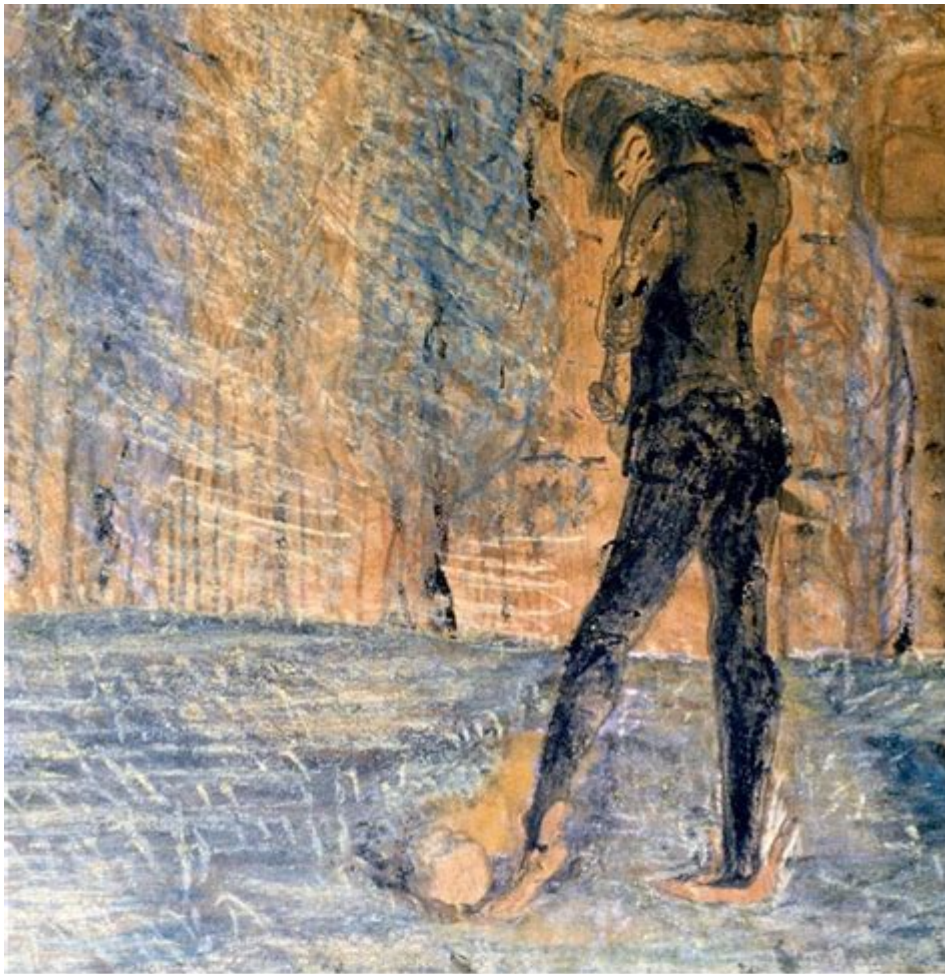


Hamlet The Oxford Shakespeare Oxford Worlds Classics



The Oxford Shakespeare
Hamlet

OXFORD WORLD'S CLASSICS



Introduction to Hamlet: The Oxford Shakespeare

Hamlet: The Oxford Shakespeare Oxford World's Classics is a prominent edition of one of the most celebrated works in English literature, William Shakespeare's tragedy

"Hamlet." This edition stands out for its scholarly rigor, contextual insights, and accessibility, allowing readers to appreciate the depth and complexity of Shakespeare's work. The Oxford World's Classics series aims to provide high-quality editions of literary classics, making them suitable for both academic study and general reading.

Overview of Hamlet

"Hamlet," written around 1600, is a tragedy centered on themes of revenge, madness, mortality, and the struggle for identity. The play follows Prince Hamlet of Denmark as he grapples with the death of his father, the hasty remarriage of his mother, Gertrude, to his uncle, Claudius, and the revelation that Claudius murdered his father. The narrative unfolds through Hamlet's internal conflict and his quest for vengeance, leading to a tragic conclusion that explores the consequences of action and inaction.

Key Themes in Hamlet

The play is rich with themes that resonate through the ages. Some of the most prominent themes include:

- **Revenge:** The central theme driving the plot, as Hamlet seeks to avenge his father's death.
- **Madness:** Hamlet's feigned madness raises questions about sanity, grief, and the effects of trauma.
- **Mortality:** The inevitability of death is a recurring motif, explored through Hamlet's soliloquies.
- **Corruption and Decay:** The moral decay in the Danish court reflects larger societal issues.
- **Existentialism:** Hamlet's philosophical musings on life and death raise questions about existence and purpose.

Features of the Oxford World's Classics Edition

The Oxford World's Classics edition of "Hamlet" is distinguished by several features that enhance the reading experience:

Scholarly Commentary

This edition includes extensive notes and commentary that provide insights into the text, offering explanations of archaic language, historical context, and critical interpretations. The annotations help modern readers understand the nuances of Shakespeare's language and the implications of various passages.

Introduction and Contextualization

The introduction in the Oxford edition is crafted by a leading Shakespeare scholar, offering a comprehensive overview of the play's background, themes, and significance. This contextualization helps readers appreciate the socio-political landscape of Elizabethan England and the play's enduring relevance.

Textual Integrity

Oxford World's Classics editions are known for their commitment to textual accuracy. The edition of "Hamlet" is based on authoritative texts, ensuring that readers engage with a version that reflects Shakespeare's original intentions. This fidelity to the text is crucial for both scholars and casual readers.

Critical Perspectives

The Oxford edition often includes a selection of essays or excerpts from critical analyses that explore various interpretations of "Hamlet." These perspectives allow readers to see the multitude of ways in which the play can be understood, from feminist readings to psychoanalytic interpretations.

The Characters of Hamlet

The richness of "Hamlet" lies not only in its themes but also in its complex characters. Each character plays a crucial role in the unfolding of the narrative and the exploration of its themes.

Main Characters

1. **Hamlet:** The protagonist and Prince of Denmark, who is deeply introspective and struggles with his purpose.

2. **Claudius:** Hamlet's uncle and the antagonist, whose ambition leads to murder and corruption.
3. **Gertrude:** Hamlet's mother, whose quick remarriage raises questions about loyalty and morality.
4. **Ophelia:** Hamlet's love interest, who becomes a victim of the surrounding turmoil and madness.
5. **Polonius:** Ophelia's father, who embodies the theme of deception and spying.
6. **Laertes:** Ophelia's brother, whose quest for revenge parallels Hamlet's own.

Supporting Characters

In addition to the main characters, several supporting roles add depth to the narrative:

- **Horatio:** Hamlet's loyal friend who provides a voice of reason.
- **Ghost:** The apparition of Hamlet's father, whose revelation sets the plot in motion.
- **Rosencrantz and Guildenstern:** Friends of Hamlet who are used as pawns by Claudius.

The Significance of Hamlet in Literature

"Hamlet" is often regarded as one of the greatest works of literature, and its influence extends far beyond Shakespeare's time. The play has inspired countless adaptations, interpretations, and studies. Its exploration of the human condition makes it a timeless piece, relevant to contemporary audiences.

Cultural Impact

The cultural impact of "Hamlet" can be seen in various forms:

- **Theatrical Adaptations:** Numerous film and stage adaptations have reimagined the play in diverse settings and styles.
- **Literary References:** Many authors and poets have referenced "Hamlet," highlighting its themes in their own works.

- **Psychological Studies:** The character of Hamlet has become a subject of psychological analysis, particularly in discussions of existentialism and madness.

Educational Importance

"Hamlet" is a staple in academic curricula, often serving as a foundational text for studies in literature, drama, and philosophy. Its rich language, complex characters, and profound themes make it an ideal subject for analysis and discussion.

Conclusion

In conclusion, "Hamlet: The Oxford Shakespeare Oxford World's Classics" provides an invaluable resource for readers and scholars alike. The edition's comprehensive features, including scholarly commentary, contextual introductions, and critical perspectives, enhance the understanding of this timeless tragedy. As readers engage with Hamlet's journey, they are invited to reflect on the broader themes of revenge, madness, and the human experience, ensuring that Shakespeare's work continues to resonate across generations. Whether approached as a literary masterpiece or a philosophical exploration, "Hamlet" remains a pivotal work that challenges and inspires.

Frequently Asked Questions

What is the significance of the Oxford World's Classics edition of Hamlet?

The Oxford World's Classics edition of Hamlet is significant for its authoritative text, comprehensive introductions, and detailed notes that provide context and insights into Shakespeare's work, making it accessible for both students and general readers.

Who edited the Oxford World's Classics edition of Hamlet?

The Oxford World's Classics edition of Hamlet is typically edited by a respected scholar, such as Ann Thompson and Neil Taylor, who provide valuable commentary and analysis.

How does the Oxford World's Classics edition of Hamlet differ from other editions?

This edition often includes critical essays, historical context, and performance history, alongside the play text, which distinguishes it from other editions that may focus solely on the text.

What themes are explored in the Oxford World's Classics edition of Hamlet?

Key themes explored include revenge, madness, mortality, and the complexity of action, with comprehensive notes that enhance understanding of these concepts within the play.

Does the Oxford World's Classics edition of Hamlet include any supplementary materials?

Yes, it often includes a timeline of Shakespeare's life and works, a bibliography for further reading, and essays that provide critical perspectives on the play.

What is the intended audience for the Oxford World's Classics edition of Hamlet?

The intended audience includes students, educators, and general readers who seek a deeper understanding of Shakespeare's Hamlet through an accessible and well-researched format.

Are there any notable illustrations or maps included in the Oxford World's Classics edition of Hamlet?

While the primary focus is on the text and commentary, some editions may include illustrations or maps that help contextualize the setting and themes of the play.

How does the introduction in the Oxford World's Classics edition enhance the reading of Hamlet?

The introduction provides essential background information, critical interpretations, and insights into the historical and cultural context of the play, enriching the reader's understanding.

What can readers expect from the annotations in the Oxford World's Classics edition of Hamlet?

Readers can expect thorough annotations that explain archaic language, cultural references, and literary devices, aiding comprehension and appreciation of Shakespeare's intricate writing.

Is the Oxford World's Classics edition of Hamlet suitable for academic study?

Yes, it is highly suitable for academic study due to its scholarly approach, detailed notes, and critical essays that facilitate deeper analysis and discussion of the play.

Find other PDF article:

<https://soc.up.edu.ph/68-fact/files?trackid=CgP30-2086&title=your-turn-practice-book-grade-5-answers.pdf>

Hamlet The Oxford Shakespeare Oxford Worlds Classics

📱📱📱📱 iOS 📱📱 - 📱📱

9.Tiny Thief 📱📱📱📱📱📱📱📱📱📱📱📱📱📱📱📱 10.Hamlet📱 📱📱📱📱📱📱📱📱📱📱📱📱📱📱📱📱

📱📱📱📱📱📱📱📱📱📱 - 📱📱📱

📱📱📱📱📱 📱📱📱📱Hamlet📱📱📱📱📱📱📱📱📱1599📱1602📱📱📱📱📱📱📱📱📱📱📱📱📱📱📱📱📱📱📱📱
📱📱📱📱 ...

📱📱📱📱📱📱📱📱📱📱📱📱📱📱📱📱_📱📱📱

1📱📱📱📱📱Hamlet📱📱📱📱📱📱📱📱📱1599📱1602📱📱📱📱📱📱📱📱📱📱📱📱📱📱📱📱📱📱
📱📱📱📱 ...

📱📱📱📱📱📱📱📱📱📱📱📱📱📱📱📱_📱📱📱

Mar 30, 2013 · 📱📱 📱📱📱📱Hamlet📱📱📱📱📱📱📱📱📱📱1599📱1602📱📱📱📱📱📱📱📱📱📱📱📱📱📱📱
📱📱📱📱📱📱📱📱 ...

📱📱📱📱📱📱📱📱📱📱📱📱📱📱📱📱_📱📱📱

Nov 21, 2008 · 1📱📱📱📱📱📱📱📱📱Hamlet📱 📱📱📱📱📱📱Othello📱📱📱King Lear📱📱📱📱📱King Lear📱📱
📱📱 2📱📱📱📱📱📱📱📱📱 ...

📱📱📱📱📱📱📱📱📱📱📱📱📱📱📱📱 - 📱📱📱

1📱📱📱📱📱Hamlet📱📱📱📱📱📱📱📱📱1599📱1602📱📱📱📱📱📱📱📱📱📱📱📱📱📱
📱📱📱📱 ...

📱📱📱📱📱**DLC**📱📱📱📱 (Don't Starve: Hamlet)📱📱

📱📱📱📱📱📱DLC📱Don't Starve: Hamlet📱📱📱📱📱📱📱📱📱📱📱📱

📱📱📱📱📱📱📱📱📱📱📱📱📱📱📱📱 ...

📱📱 - township/town 📱 - town/small city 📱📱 - village/hamlet 📱📱 - administrative village 📱 - 📱📱“📱📱”
📱📱📱📱📱 📱📱📱📱 village/hamlet 📱📱 - production brigade 📱 ...

📱📱📱📱📱📱📱📱📱you may be sure📱📱📱📱📱📱 ...

Hilton is building its own hotel there, which you may be sure will be decorated with Hamlet
Hamburger Bars 📱📱 📱📱you may be sure📱📱📱📱📱📱📱📱📱📱📱📱 ...

📱📱📱📱📱📱📱📱📱“📱📱📱📱📱📱📱📱”? - 📱📱

Gertrude📱Hamlet📱📱📱Claudius📱📱📱Ophelia📱Polonius📱📱📱Laerties📱📱📱Hamlet📱📱📱📱📱📱
📱Hamlet📱📱📱📱📱📱📱📱📱📱📱📱 ...

📱📱📱📱📱📱 iOS 📱📱 - 📱📱

9.Tiny Thief 📱📱📱📱📱📱📱📱📱📱📱📱📱📱📱📱 10.Hamlet📱 📱📱📱📱📱📱📱📱📱📱📱📱📱📱📱📱

📱📱📱📱📱📱📱📱📱📱 - 📱📱📱

📱📱📱📱📱 📱📱📱📱Hamlet📱📱📱📱📱📱📱📱📱1599📱1602📱📱📱📱📱📱📱📱📱📱📱📱📱📱📱
📱📱📱📱 ...

📱📱📱📱📱📱📱📱📱📱📱📱📱📱📱📱_📱📱📱

1📱📱📱📱📱Hamlet📱📱📱📱📱📱📱📱📱1599📱1602📱📱📱📱📱📱📱📱📱📱📱📱📱📱
📱📱📱📱📱📱📱📱

