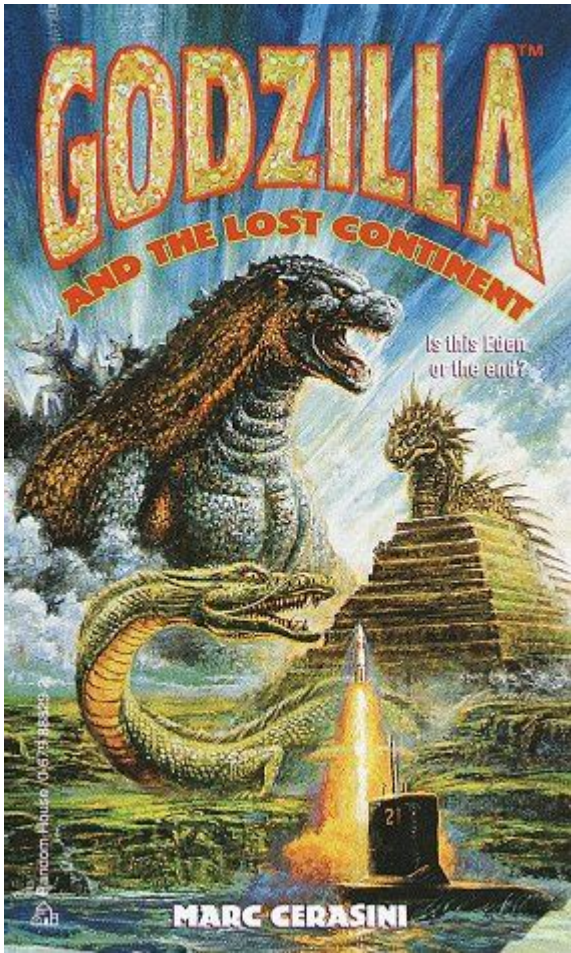


Godzilla And The Lost Continent



GODZILLA AND THE LOST CONTINENT IS A FASCINATING EXPLORATION OF ONE OF CINEMA'S MOST ENDURING MONSTERS, GODZILLA, AND THE MYTHICAL REALM OFTEN REFERRED TO AS THE "LOST CONTINENT." THIS ARTICLE DELVES INTO THE ORIGIN OF GODZILLA, THE CONCEPT OF LOST CONTINENTS IN POPULAR CULTURE, AND HOW THESE ELEMENTS INTERTWINE TO CREATE THRILLING STORIES THAT HAVE CAPTIVATED AUDIENCES FOR DECADES.

INTRODUCTION TO GODZILLA

GODZILLA, A GIANT MONSTER ORIGINATING FROM JAPAN, FIRST APPEARED IN THE 1954 FILM "GODZILLA" (ORIGINALLY TITLED "GOJIRA"). THIS ICONIC CREATURE WAS BORN FROM THE FEARS OF NUCLEAR WARFARE IN THE POST-WORLD WAR II ERA. OVER THE DECADES, GODZILLA HAS EVOLVED FROM A HARBINGER OF DESTRUCTION INTO A COMPLEX CHARACTER, OFTEN PORTRAYED AS A PROTECTOR OF EARTH AGAINST VARIOUS THREATS.

GODZILLA'S CHARACTERISTICS

1. SIZE AND APPEARANCE: GODZILLA IS TYPICALLY DEPICTED AS A GIGANTIC REPTILIAN CREATURE, TOWERING OVER SKYSCRAPERS WITH SCALY SKIN AND A LONG TAIL.
2. POWERS AND ABILITIES: GODZILLA POSSESSES SEVERAL POWERS, INCLUDING:
 - NUCLEAR BREATH: A POWERFUL ATOMIC BREATH THAT CAN OBLITERATE BUILDINGS AND FOES.
 - REGENERATION: THE ABILITY TO HEAL RAPIDLY FROM INJURIES.
 - IMMENSE STRENGTH: CAPABLE OF LIFTING AND THROWING MASSIVE OBJECTS.

3. EVOLUTION OF THE CHARACTER: OVER THE YEARS, GODZILLA HAS TRANSITIONED FROM A VILLAIN TO AN ANTI-HERO, OFTEN BATTLING OTHER MONSTERS, ALIEN INVADERS, AND HUMAN THREATS TO MAINTAIN BALANCE IN NATURE.

THE LOST CONTINENT IN LITERATURE AND FILM

THE TERM "LOST CONTINENT" REFERS TO MYTHICAL OR FICTIONAL LANDMASSSES THAT WERE BELIEVED TO HAVE EXISTED IN THE DISTANT PAST BUT HAVE SINCE DISAPPEARED. THE MOST FAMOUS EXAMPLE IS ATLANTIS, BUT OTHER CULTURES AND STORIES HAVE PROPOSED VARIOUS LOST LANDS, EACH WITH ITS UNIQUE LORE.

CHARACTERISTICS OF LOST CONTINENTS

1. GEOGRAPHICAL FEATURES: TYPICALLY DEPICTED AS LUSH, VIBRANT, AND RICH IN NATURAL RESOURCES, LOST CONTINENTS OFTEN FEATURE:

- VAST LANDSCAPES FILLED WITH EXOTIC FLORA AND FAUNA.
- MOUNTAIN RANGES AND DEEP VALLEYS.
- HIDDEN CIVILIZATIONS OR ANCIENT RUINS.

2. CULTURAL SIGNIFICANCE: LOST CONTINENTS OFTEN SERVE AS METAPHORS FOR:

- THE LOSS OF INNOCENCE OR KNOWLEDGE.
- THE CONSEQUENCES OF HUMAN HUBRIS AND ENVIRONMENTAL DESTRUCTION.

3. EXPLORATORY THEMES: MANY STORIES INVOLVING LOST CONTINENTS FOCUS ON THEMES OF EXPLORATION AND DISCOVERY, HIGHLIGHTING HUMANITY'S DESIRE TO UNCOVER THE MYSTERIES OF THE PAST.

GODZILLA AND THE CONCEPT OF THE LOST CONTINENT

THE INTERSECTION OF GODZILLA AND THE CONCEPT OF THE LOST CONTINENT CREATES A RICH TAPESTRY FOR STORYTELLING. VARIOUS FILMS AND MEDIA HAVE EXPLORED THIS CONNECTION, BLENDING THE DESTRUCTIVE POWER OF GODZILLA WITH THE ALLURE OF MYTHICAL LANDS.

KEY FILMS AND STORYLINES

1. "GODZILLA VS. KING GHIDORAH" (1991): IN THIS FILM, TIME-TRAVELING CHARACTERS VENTURE BACK TO ANCIENT JAPAN, WHERE THEY ENCOUNTER GODZILLA EMERGING FROM THE DEPTHS OF A LOST CONTINENT. THIS STORYLINE EMPHASIZES THE IDEA OF A FORGOTTEN ERA AND THE IMPACT OF HISTORICAL EVENTS ON THE PRESENT.

2. "GODZILLA: KING OF THE MONSTERS" (2019): WHILE NOT EXPLICITLY FEATURING A LOST CONTINENT, THE FILM EXPLORES THE HIDDEN WORLD OF TITANS, INTRODUCING THE CONCEPT OF ANCIENT BEINGS THAT ONCE ROAMED THE EARTH. THIS HIDDEN REALM PARALLELS THE IDEA OF A LOST CONTINENT, SUGGESTING THAT REMNANTS OF POWERFUL BEINGS STILL INFLUENCE THE WORLD.

3. "GODZILLA: THE PLANET EATER" (2018): THIS ANIMATED FILM DIVES INTO THE LORE OF GODZILLA'S ORIGINS, HINTING AT ANCIENT CIVILIZATIONS AND FORGOTTEN HISTORIES THAT TIE INTO THE LOST CONTINENT NARRATIVE.

THEMATIC CONNECTIONS

1. NATURE VS. HUMANITY: BOTH GODZILLA AND THE NOTION OF LOST CONTINENTS OFTEN EXPLORE THE CONFLICT BETWEEN NATURE AND HUMAN CIVILIZATION. GODZILLA SERVES AS A REMINDER OF NATURE'S POWER, WHILE LOST CONTINENTS REPRESENT THE POTENTIAL CONSEQUENCES OF HUMANITY'S ACTIONS.

2. REDISCOVERY OF THE PAST: THE EXPLORATION OF LOST CONTINENTS OFTEN LEADS TO THE UNCOVERING OF ANCIENT CIVILIZATIONS, MUCH LIKE HOW GODZILLA'S PRESENCE OFTEN FORCES HUMANITY TO CONFRONT ITS HISTORY, PARTICULARLY REGARDING ENVIRONMENTAL NEGLECT AND NUCLEAR POWER.

3. LEGENDS AND MYTHS: JUST AS LOST CONTINENTS ARE STEEPED IN LEGEND, GODZILLA HAS BECOME A MYTHIC FIGURE IN POPULAR CULTURE, BLENDING FOLKLORE WITH MODERN FEARS AND CONCERNS.

THE CULTURAL IMPACT OF GODZILLA AND LOST CONTINENTS

GODZILLA'S INFLUENCE EXTENDS BEYOND THE FILM INDUSTRY, IMPACTING VARIOUS ASPECTS OF POP CULTURE, INCLUDING LITERATURE, ART, AND VIDEO GAMES. SIMILARLY, THE IDEA OF LOST CONTINENTS HAS INSPIRED COUNTLESS WORKS ACROSS DIFFERENT MEDIA.

GODZILLA IN POPULAR CULTURE

1. MERCHANDISING: GODZILLA HAS SPAWNED A VAST ARRAY OF MERCHANDISE, FROM TOYS AND COLLECTIBLES TO CLOTHING AND VIDEO GAMES.
2. CROSSEOVERS: THE CHARACTER HAS APPEARED IN NUMEROUS CROSSEOVER EVENTS, INCLUDING COMIC BOOKS AND VIDEO GAMES, SHOWCASING HIS ADAPTABILITY AND ENDURING APPEAL.
3. INTERNATIONAL INFLUENCE: GODZILLA'S GLOBAL REACH HAS LED TO REMAKES AND ADAPTATIONS IN VARIOUS COUNTRIES, HIGHLIGHTING THE UNIVERSAL THEMES OF FEAR AND RESILIENCE.

LOST CONTINENTS IN MEDIA

1. LITERATURE: NOVELS SUCH AS "ATLANTIS" BY PIERRE BENOIT AND "THE LOST CONTINENT" BY C.S. LEWIS EXPLORE THE ALLURE OF LOST LANDS AND THEIR MYSTERIOUS HISTORIES.
2. FILM AND TELEVISION: NUMEROUS FILMS AND TV SHOWS, SUCH AS "JOURNEY TO THE CENTER OF THE EARTH" AND "THE LAND THAT TIME FORGOT," DELVE INTO THE IDEA OF LOST CIVILIZATIONS AND THEIR RELATIONSHIP WITH CONTEMPORARY SOCIETY.
3. VIDEO GAMES: MANY VIDEO GAMES, SUCH AS "UNCHARTED" AND "TOMB RAIDER," FEATURE LOST CONTINENTS AS SETTINGS, ALLOWING PLAYERS TO EXPLORE ANCIENT RUINS AND UNCOVER HIDDEN TREASURES.

CONCLUSION

GODZILLA AND THE LOST CONTINENT REPRESENT TWO POWERFUL NARRATIVES THAT CONTINUE TO RESONATE WITH AUDIENCES AROUND THE WORLD. GODZILLA, AS A SYMBOL OF BOTH DESTRUCTION AND PROTECTION, EMBODIES THE STRUGGLES BETWEEN HUMANITY AND NATURE, WHILE THE IDEA OF LOST CONTINENTS EVOKES A SENSE OF MYSTERY AND EXPLORATION. TOGETHER, THEY CREATE A RICH LANDSCAPE FOR STORYTELLING THAT CHALLENGES VIEWERS TO REFLECT ON THEIR RELATIONSHIP WITH THE PAST AND THEIR RESPONSIBILITIES FOR THE FUTURE.

AS WE CONTINUE TO EXPLORE THESE THEMES IN FILMS, LITERATURE, AND OTHER MEDIA, THE STORIES OF GODZILLA AND LOST CONTINENTS WILL UNDOUBTEDLY EVOLVE, REFLECTING THE EVER-CHANGING DYNAMICS OF HUMAN CIVILIZATION AND OUR UNDERSTANDING OF THE WORLD AROUND US. WHETHER THROUGH THE LENS OF A COLOSSAL MONSTER OR THE ALLURE OF FORGOTTEN LANDS, THESE NARRATIVES WILL REMAIN A VITAL PART OF OUR CULTURAL CONSCIOUSNESS FOR YEARS TO COME.

FREQUENTLY ASKED QUESTIONS

WHAT IS THE PREMISE OF 'GODZILLA AND THE LOST CONTINENT'?

THE FILM EXPLORES A MYSTERIOUS LOST CONTINENT THAT EMERGES FROM THE OCEAN, HOME TO ANCIENT CREATURES AND LONG-FORGOTTEN CIVILIZATIONS, LEADING TO A CONFRONTATION BETWEEN GODZILLA AND NEW MONSTROUS THREATS.

WHO ARE THE MAIN CHARACTERS IN 'GODZILLA AND THE LOST CONTINENT'?

THE MAIN CHARACTERS INCLUDE A TEAM OF EXPLORERS, A MARINE BIOLOGIST, AND A MILITARY LEADER WHO MUST NAVIGATE THE CHALLENGES POSED BY THE LOST CONTINENT AND GODZILLA'S RAMPAGE.

HOW DOES 'GODZILLA AND THE LOST CONTINENT' CONNECT TO PREVIOUS GODZILLA FILMS?

THE FILM BUILDS ON THE GODZILLA FRANCHISE BY INCORPORATING THEMES OF ENVIRONMENTALISM AND HUMANITY'S IMPACT ON NATURE, WHILE ALSO FEATURING REFERENCES TO ICONIC MOMENTS FROM EARLIER GODZILLA FILMS.

WHAT ARE SOME OF THE NEW MONSTERS INTRODUCED IN 'GODZILLA AND THE LOST CONTINENT'?

NEW MONSTERS INCLUDE A GIANT PREHISTORIC REPTILE CALLED TITANIS AND A COLOSSAL SEA CREATURE KNOWN AS LEVIATHAN, BOTH OF WHICH POSE SIGNIFICANT CHALLENGES TO GODZILLA.

WHAT KIND OF VISUAL EFFECTS CAN AUDIENCES EXPECT IN 'GODZILLA AND THE LOST CONTINENT'?

AUDIENCES CAN EXPECT CUTTING-EDGE VISUAL EFFECTS THAT BRING THE EPIC BATTLES BETWEEN GODZILLA AND THE NEW MONSTERS TO LIFE, SHOWCASING BREATHTAKING LANDSCAPES AND DETAILED CREATURE DESIGNS.

IS 'GODZILLA AND THE LOST CONTINENT' PART OF A LARGER CINEMATIC UNIVERSE?

YES, IT IS PART OF THE MONSTERVERSE, WHICH INCLUDES PREVIOUS FILMS LIKE 'GODZILLA', 'KONG: SKULL ISLAND', AND 'GODZILLA VS. KONG', EXPANDING THE LORE AND INTERCONNECTED STORIES OF THESE ICONIC MONSTERS.

WHAT THEMES ARE EXPLORED IN 'GODZILLA AND THE LOST CONTINENT'?

THE FILM EXPLORES THEMES OF EXPLORATION, THE CONSEQUENCES OF HUMAN ACTIONS ON NATURE, AND THE CONFLICT BETWEEN MAN AND MONSTER, WHILE HIGHLIGHTING THE IMPORTANCE OF COEXISTENCE WITH THE NATURAL WORLD.

Find other PDF article:

<https://soc.up.edu.ph/17-scan/pdf?ID=SFr55-7541&title=did-aretha-franklin-have-a-drinking-problem.pdf>

Godzilla And The Lost Continent

Godzilla (2014) - Filmweb

May 8, 2014 · Godzilla (2014) - Najsłynniejszy potwór w historii mierzy się z wrogimi stworami, które, wzmocnione przez ...

Godzilla Minus One (2023) - Filmweb

Nov 3, 2023 · Godzilla Minus One (2023) Gojira Mainasu Wan - Japonia po wojnie straciła niemal wszystko. Czy wyniszczony ...

Godzilla i Kong: Nowe imperium (2024) - Filmweb

Mar 27, 2024 · Godzilla i Kong: Nowe imperium (2024) Godzilla x Kong: The New Empire - Kong

broni Ziemi przed ...

Godzilla filmy i seriale - Filmweb

Filmweb.pl - Filmy takie jak Ty Filmweb to największy i najczęściej odwiedzany polski serwis filmowy. Największa baza filmów, ...

Godzilla vs. Kong (2021) - Filmweb

Mar 24, 2021 · Godzilla vs. Kong (2021) - Król Potworów z nieznanym przyczyn zaczyna się spustoszenie na całym świecie. W obliczu ...

Godzilla (2014) - Filmweb

May 8, 2014 · Godzilla (2014) - Najślynniejszy potwór w historii mierzy się z wrogimi stworami, które, wzmocnione przez arogancję i nieświadomość naukowców, zagrażają ludzkości.

Godzilla Minus One (2023) - Filmweb

Nov 3, 2023 · Godzilla Minus One (2023) Gojira Mainasu Wan - Japonia po wojnie straciła niemal wszystko. Czy wyniszczony kraj zdoła przetrwać atak Godzilli?

Godzilla i Kong: Nowe imperium (2024) - Filmweb

Mar 27, 2024 · Godzilla i Kong: Nowe imperium (2024) Godzilla x Kong: The New Empire - Kong broni Ziemi przed niezwykłymi i niebezpiecznymi stworzeniami.

Godzilla filmy i seriale - Filmweb

Filmweb.pl - Filmy takie jak Ty Filmweb to największy i najczęściej odwiedzany polski serwis filmowy. Największa baza filmów, seriali i aktorów, repertuar kin i tv, premiery, nowości DVD, ...

Godzilla vs. Kong (2021) - Filmweb

Mar 24, 2021 · Godzilla vs. Kong (2021) - Król Potworów z nieznanym przyczyn zaczyna się spustoszenie na całym świecie. W obliczu zagrożenia, grupa ludzi postanawia przeciwstawić mu ...

Monarch: Dziedzictwo potworów (Serial TV 2023-) - Filmweb

Monarch: Dziedzictwo potworów (2023) Monarch: Legacy of Monsters - Cate udaje się przetrwać atak Godzilli na San Francisco, po czym przeżywa kolejny wstrząs, gdy odkrywa szokujący ...

Godzilla (1954) - Filmweb

Godzilla (1954) Gojira - Obudzony potężnym wybuchem potwór przemierza Japonię, siejąc śmierć i spustoszenie.

Godzilla II: Król potworów (2019) - Filmweb

May 29, 2019 · Opis filmu Godzilla II: Król potworów Kolejna odsłona filmowego MonsterVerse, opowiada historię o bohaterskich czynach członków kryptozoologicznej agencji Monarch, ...

Pełna lista premier Netfliksa na lipiec 2025. Nowe filmy, seriale ...

Jun 27, 2025 · Lipiec tuż-tuż, a to oznacza nowe filmy i seriale w serwisach VOD. W lipcu Netflix przygotował dla Was porcję znakomitych nowości. Znajdziecie wśród nich zarówno nowe ...

Kong: Wyspa Czaszki (2017) - Filmweb

Kong: Wyspa Czaszki (2017) Kong: Skull Island - Kiedy grupa odkrywców trafia na wyspę zamieszkałą przez mitycznego Konga, ich misja badawcza zamienia się w walkę o przetrwanie.

Dive into the epic tale of Godzilla and the Lost Continent! Discover how this legendary monster confronts ancient threats and unearths hidden secrets. Learn more!

[Back to Home](#)