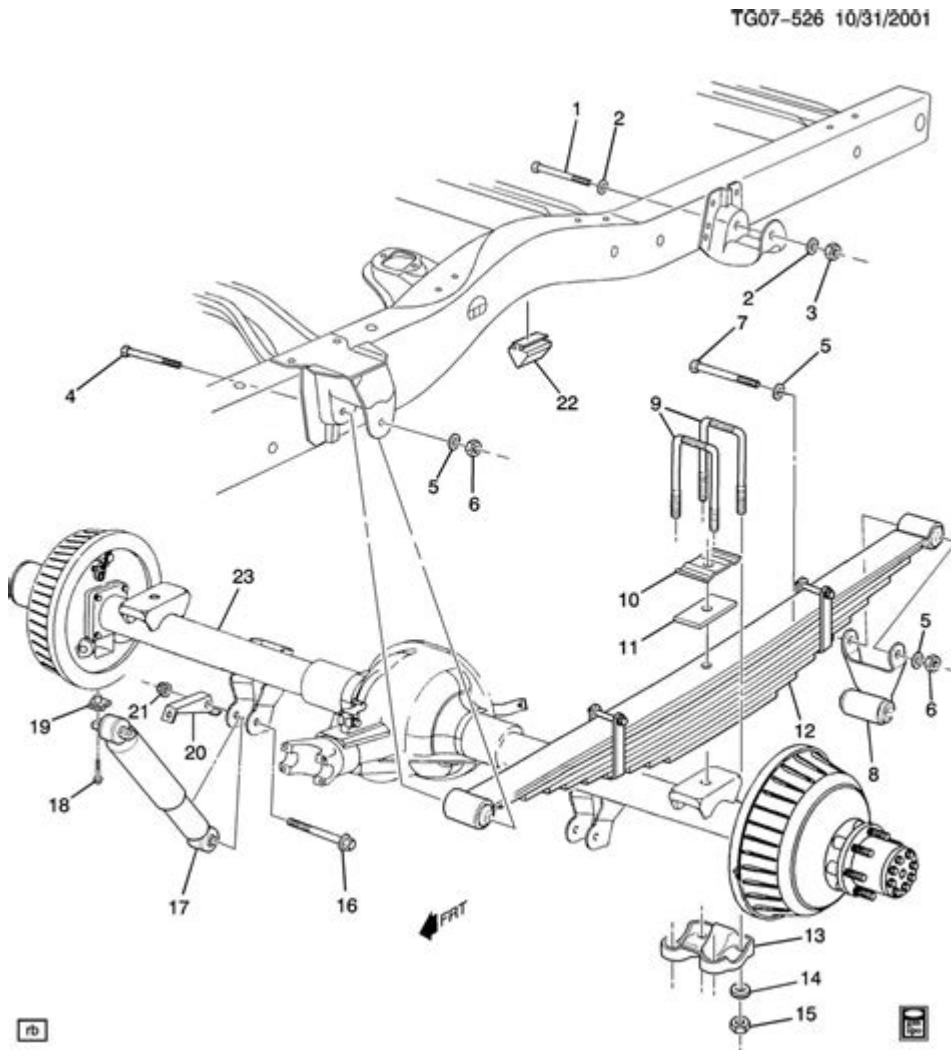


Gmc Sierra Front Suspension Diagram



GMC Sierra front suspension diagram is an essential tool for understanding the intricate design and functionality of the vehicle's front suspension system. The GMC Sierra, a popular full-size pickup truck, is known for its robust performance, durability, and versatility. The front suspension plays a crucial role in ensuring ride comfort, stability, and overall vehicle handling. In this article, we will delve into the various components of the GMC Sierra's front suspension, how they work together, and the significance of the front suspension diagram in vehicle maintenance and repair.

Overview of the Front Suspension System

The front suspension system of the GMC Sierra is designed to absorb shocks from the road, enhance ride quality, and maintain tire contact with the road surface. The system consists of several key components that work in unison to provide stability and comfort.

Key Components

1. **Control Arms:** These components connect the chassis to the wheel assembly and allow for vertical movement of the wheels while maintaining lateral stability.
2. **Shock Absorbers:** Also known as dampers, these components control the oscillation of the springs and help to stabilize the vehicle during various driving conditions.
3. **Coil Springs:** These springs support the weight of the vehicle and absorb impact from bumps and uneven surfaces.
4. **Steering Knuckle:** This component connects the wheel hub to the control arms and allows for steering movement.
5. **Ball Joints:** These joints enable the control arms to pivot while also connecting to the steering knuckle, allowing for smooth and controlled steering.
6. **Sway Bar:** This component helps to reduce body roll during turns, enhancing vehicle stability.
7. **Wheel Hub Assembly:** This assembly houses the wheel bearings and connects the wheel to the suspension system.

Functionality of the Front Suspension System

Understanding the functionality of each component is crucial for diagnosing issues and performing maintenance. The GMC Sierra's front suspension operates in several key ways:

Shock Absorption

The combination of coil springs and shock absorbers helps to absorb shocks from the road. When the vehicle encounters a bump or pothole, the coil springs compress, absorbing the impact and preventing it from transferring directly to the chassis. The shock absorbers then control the rebound of the springs, ensuring a smooth ride.

Wheel Alignment and Control

The control arms and ball joints allow for a controlled range of motion for the wheels. Proper alignment is crucial for maintaining even tire wear and ensuring that the vehicle tracks straight. Misalignment can lead to handling issues and increased tire wear, making regular checks essential.

Stability During Cornering

The sway bar plays a significant role in maintaining stability during turns. It reduces body roll, allowing the vehicle to maintain better contact with the road surface. This is particularly important in a truck like the GMC Sierra, which may carry heavy loads or tow trailers.

Importance of the Front Suspension Diagram

A GMC Sierra front suspension diagram provides a visual representation of the entire front suspension system. It serves multiple purposes:

Visual Aid for Repairs and Maintenance

Mechanics and DIY enthusiasts can use the diagram to identify each component's location and function. This makes it easier to diagnose issues, perform repairs, and replace parts when necessary.

Understanding Suspension Geometry

The diagram illustrates the geometry of the suspension system, which is vital for understanding how the components interact during different driving conditions. This knowledge is crucial for anyone involved in suspension tuning or modifications.

Guidance for Upgrades and Modifications

For those looking to upgrade their Sierra's suspension system, the diagram provides a baseline understanding of how aftermarket parts may interact with the existing components. This is particularly important for off-road enthusiasts who may wish to lift or modify their trucks for improved performance.

Common Issues with the Front Suspension

While the GMC Sierra is known for its durability, the front suspension can experience wear and tear over time. Understanding common issues can help owners take proactive measures.

Worn Shock Absorbers

Symptoms:

- Excessive bouncing or swaying
- Longer stopping distances
- Uneven tire wear

Solutions:

- Regularly inspect shock absorbers for leaks or signs of wear.
- Replace worn shocks to restore ride quality and handling.

Damaged Control Arms

Symptoms:

- Clunking noises when driving over bumps
- Steering wander or instability

Solutions:

- Inspect control arms for cracks or bends.
- Replace damaged control arms to ensure proper alignment and stability.

Ball Joint Failure

Symptoms:

- Grinding noise when turning
- Uneven tire wear

Solutions:

- Regularly check ball joints for play or wear.
- Replace worn ball joints to maintain steering precision.

Maintenance Tips for the Front Suspension

To ensure the longevity and performance of the GMC Sierra's front suspension, regular maintenance is essential. Here are some tips:

1. **Regular Inspections:** Schedule periodic inspections of the suspension components, especially if you frequently drive on rough terrain or carry heavy loads.
2. **Check Alignment:** Have the wheel alignment checked regularly, especially after replacing suspension components or if you notice uneven tire wear.
3. **Monitor Ride Quality:** Pay attention to how your vehicle handles. If you notice a decline in ride quality or handling, it may be time for a suspension inspection.
4. **Use Quality Parts:** When replacing components, opt for high-quality parts that meet or exceed OEM specifications to ensure reliability.
5. **Lubricate Moving Parts:** Regularly lubricate ball joints and other moving parts to reduce friction and wear.

Conclusion

A thorough understanding of the GMC Sierra front suspension diagram is invaluable for vehicle owners and mechanics alike. By familiarizing themselves with the components and their functions, individuals can effectively diagnose issues, perform necessary maintenance, and enhance the overall performance of the vehicle. Proper care and attention to the front suspension will not only improve ride quality but also extend the life of the truck, making it a reliable companion for years to come. Whether you are tackling heavy loads, navigating rough terrain, or simply enjoying a drive, a well-maintained front suspension system is essential for a smooth and safe driving experience.

Frequently Asked Questions

What is the purpose of the front suspension in a GMC Sierra?

The front suspension in a GMC Sierra supports the weight of the vehicle, absorbs shocks from the road, and helps maintain tire contact for better handling and stability.

Where can I find a detailed front suspension diagram for a GMC Sierra?

A detailed front suspension diagram for a GMC Sierra can be found in the vehicle's service manual, online auto repair databases, or on automotive forums dedicated to GMC vehicles.

What components are typically included in the GMC Sierra front suspension diagram?

Typically, the front suspension diagram includes components such as control arms, ball joints, struts or shocks, sway bar links, and the steering knuckle.

How can I interpret the front suspension diagram for my GMC Sierra?

To interpret the front suspension diagram, familiarize yourself with the labeled components, understand the function of each part, and use the diagram to assist with repairs or maintenance.

Is the front suspension design of the GMC Sierra different from other trucks?

Yes, the front suspension design of the GMC Sierra may differ from other trucks, as it often features specific engineering for load capacity, ride comfort, and handling characteristics unique to GMC's design.

What are common issues that can arise in the GMC Sierra front suspension?

Common issues include worn-out ball joints, damaged control arms, leaking struts, and misaligned

components, which can lead to poor handling and uneven tire wear.

How often should I inspect the front suspension of my GMC Sierra?

It is recommended to inspect the front suspension of your GMC Sierra at least once a year or every 12,000 miles, or more frequently if you notice handling issues or unusual noises.

Can I replace front suspension parts on my GMC Sierra myself?

Yes, if you have the right tools and mechanical knowledge, you can replace front suspension parts on your GMC Sierra. However, it's advisable to consult a professional if you are unsure.

What tools do I need to work on the front suspension of a GMC Sierra?

You will typically need tools such as a socket set, wrenches, a torque wrench, a jack and jack stands, and possibly specialized tools like a ball joint separator or strut spring compressor.

Find other PDF article:

<https://soc.up.edu.ph/59-cover/files?trackid=RZw92-9996&title=the-fortnightly-law-journal-robert-michael-willes-chitty.pdf>

Gmc Sierra Front Suspension Diagram

50 of the most iconic Formula 1 quotes ever - oversteer48

Mar 12, 2024 · 50 of the best, most iconic and most memorable quotes from Formula 1 drivers, engineers and team managers.

Understanding the Meaning Behind Steering Dreams - Dream ...

Dreams have long been a source of intrigue, offering a glimpse into the labyrinth of our subconscious. Among the myriad of symbols that inhabit our dreams, the image of ...

Here's Why the McLaren F1 Is the Greatest Car Ever Made

Here's Why the McLaren F1 Is the Greatest Car Ever Made Doug DeMuro 4.96M subscribers
Subscribed

McLaren Tech Club - Episode 24 - Engineering steering feel for ...

Oct 30, 2020 · The steering wheel is arguably the most important point of interaction between driver and car. Adam Thompson - Chief Engineer for the GT - explains how we engineer ...

Car Handling - Grip, Oversteer & Understeer explained by Tiff Needell

Mar 8, 2009 · Car Handling - Grip, Oversteer & Understeer explained by Tiff Needell valdezapg
3.16K subscribers Subscribed

Interpreting Dreams: What Does 'Steering a Car' Mean?

For instance, a dream in which the individual feels confident and in control while steering may signify a positive emotional state. This sense of empowerment can indicate that the dreamer is ...

Old Top Gear 1994 - Tiff Needell Tests McLaren F1 - YouTube

Jan 1, 2023 · All rights belong to BBCOld Top Gear 1994 - Tiff Needell Tests McLaren F1

Driving Experience - The most Important thing(s) - McLaren Life

Jul 2, 2024 · McLaren Friends, Let us know what in the Number One most important thing for you is in the Driving Experience. If you wish list all of your best in rank and order. For me it is the ...

A letter from Zak Brown - McLaren

Dec 11, 2024 · McLaren Racing CEO Zak Brown pens a letter to fans following our F1 Constructors' Championship win

Fifth Gear's Legendary McLaren F1 Drive Test - YouTube

Way back in 2002, Tiff was lucky enough to drive the McLaren F1, this is what he thought...

#FifthGear #McLarenF1 For more fantastic car reviews, shoot-outs and all your favourite Fifth ...

BingHomepageQuiz - Reddit

Nov 30, 2021 · Microsoft Bing Homepage daily quiz questions and their answers

Start home page daily quiz : r/MicrosoftRewards - Reddit

Apr 5, 2024 · Confusingly, I appeared to receive 10 points just from clicking the tile and then no points after completing the quiz (so maybe you need to get the correct answers which I did not.)

Bing homepage quiz : r/MicrosoftRewards - Reddit

Dec 4, 2021 · While these are the right answers and this quiz is still currently bugged, you don't lose points for wrong answers on this quiz.

EveryDayBingQuiz - Reddit

Feb 9, 2024 · Welcome all of you, here you will get daily answers of Microsoft Rewards (Bing Quiz) like Bing Homepage Quiz, Bing Supersonic Quiz, Bing News Quiz, Bing Entertainment ...

Bing Homepage Quiz (9-3-2023) : r/AnswerDailyQuiz - Reddit

Sep 3, 2023 · Microsoft Rewards Bing Homepage Quiz Questions and Answers (9-3-2023) Which is New York City's tallest building? A 30 Hudson Yards B Empire State...

Is there some secret "trick" to solving these? - Reddit

Is there some secret "trick" to solving these? Bing Sort by: Add a Comment propheticjustice

Bing Homepage Quiz not working : r/MicrosoftRewards - Reddit

Apr 14, 2024 · Is there some secret to getting the Bing Homepage quiz to work correctly? When I try to complete it on the mobile app it just loads the page for the search results for the correct ...

Microsoft Rewards Bing Homepage Quiz Answers Today - Reddit

Jun 15, 2024 · Bing Homepage Quiz Answers What animal father-child duo is in today's image? A Red foxes B Coyotes C Gray wolves The correct answer is...

Bing Homepage Quiz 31 January 2024 : r/MicrosoftRewards

Bing Homepage Quiz 31 January 2024 Quizzes and Answers Rietvlei Nature Reserve To deter flies

Mount Kilimanjaro Zebras got their "bars" because they ate Dutch convicts in the 17th ...

MS Bing Quiz : r/BingHomepageQuiz - Reddit

true[1-8-2022] Microsoft Rewards Bing Homepage Quiz Questions and Answers: Question: Today we're befriending a frosty bison foursome in Yellowstone National Park. Bison are...

Explore our detailed GMC Sierra front suspension diagram to understand its components and enhance your vehicle's performance. Learn more for expert insights!

[Back to Home](#)