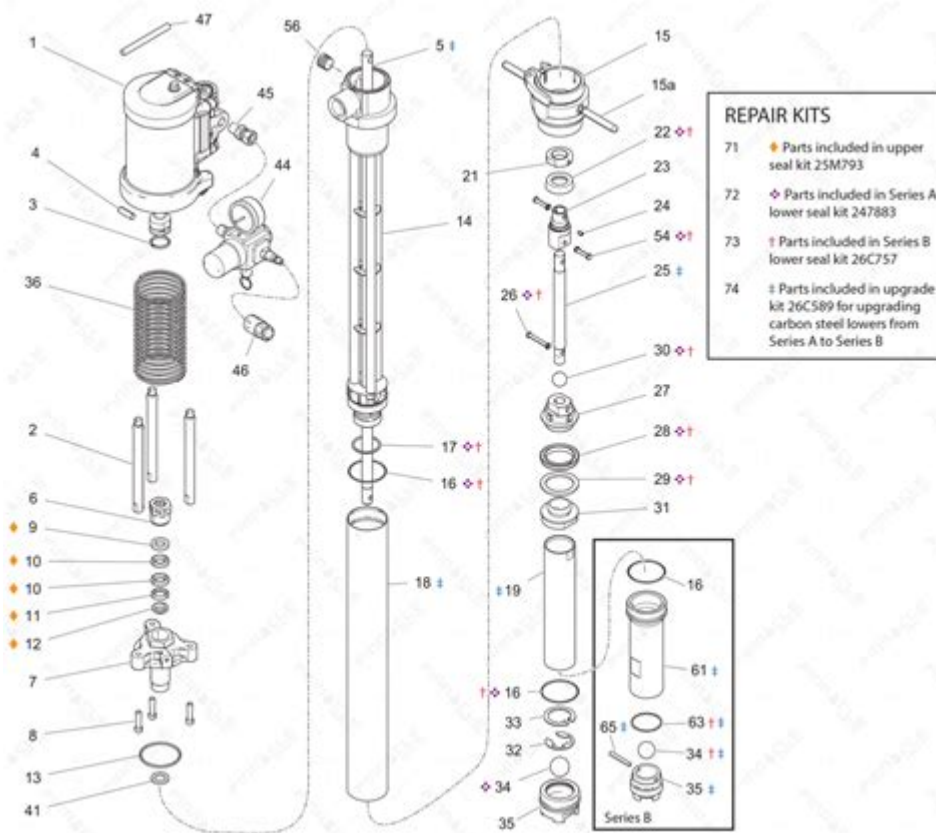


Graco T3 Transfer Pump Manual



Graco T3 Transfer Pump Manual

The Graco T3 Transfer Pump is a reliable and efficient solution for transferring a variety of fluids, including paints, coatings, and other materials. Understanding how to operate, maintain, and troubleshoot this equipment is crucial for ensuring optimal performance and longevity. This comprehensive manual will guide you through the essential aspects of the Graco T3 Transfer Pump, including its features, setup, operation, maintenance, and troubleshooting.

Overview of the Graco T3 Transfer Pump

The Graco T3 Transfer Pump is designed for high efficiency and versatility in fluid transfer applications. It is particularly well-suited for transferring low to medium viscosity materials and is commonly used in industries such as automotive, manufacturing, and construction.

Key Features

- **Durability:** Built with robust materials to withstand harsh working

conditions.

- Versatility: Capable of handling various fluids including water-based and solvent-based products.
- Portability: Lightweight design allows for easy transport and setup.
- User-friendly: Simple controls and straightforward setup process make it accessible for users of all skill levels.
- Safety: Equipped with safety features to minimize risks during operation.

Specifications

Understanding the specifications of the Graco T3 Transfer Pump is crucial for ensuring compatibility with your applications. Below are the key specifications:

- Fluid Types: Water-based coatings, solvent-based coatings, and other low to medium viscosity fluids.
- Maximum Flow Rate: Up to 3 gallons per minute (11.4 liters per minute).
- Maximum Pressure: 100 psi (6.9 bar).
- Power Source: Electric or pneumatic options available.
- Weight: Approximately 30 lbs (13.6 kg), depending on configuration.

Setup and Installation

Setting up the Graco T3 Transfer Pump requires careful attention to detail to ensure optimal performance. Follow these steps for proper installation:

Tools Required

- Adjustable wrench
- Screwdriver
- Teflon tape
- Safety goggles
- Gloves

Installation Steps

1. Choose a Location: Select a stable and dry location for the pump setup. Ensure there is adequate space for operation and maintenance.
2. Unpack the Pump: Carefully remove the pump from the packaging and inspect for any visible damage. Report any damages to the supplier immediately.
3. Attach the Inlet and Outlet Hoses:

- Use Teflon tape on the threads of the inlet and outlet ports to ensure a tight seal.
 - Connect the inlet hose to the fluid source and the outlet hose to the desired application point.
4. Connect the Power Source:
- If using an electric pump, plug it into a properly grounded outlet.
 - For pneumatic models, connect the air supply line to the designated inlet.
5. Prime the Pump: Before starting the pump, ensure that the fluid is primed within the system.
- Open the inlet valve and allow the fluid to fill the pump until it escapes from the outlet.
6. Safety Checks: Verify that all connections are secure, and that there are no leaks. Ensure safety guards are in place.
7. Start the Pump: Turn on the power supply or open the air valve to start the pump. Monitor the system for any irregularities.

Operating the Graco T3 Transfer Pump

Once the pump is set up, understanding how to operate it effectively is crucial for achieving desired results. Here are some operational guidelines:

Starting the Pump

- Ensure that all safety equipment is worn (goggles, gloves).
- Check for any leaks or loose connections.
- Turn on the pump using the main power switch or air valve.

Adjusting Flow Rate and Pressure

- The Graco T3 Transfer Pump allows you to adjust the flow rate and pressure according to your needs.
- Use the built-in controls to set the desired flow rate and pressure settings for your application.

Monitoring Performance

- Regularly check for unusual noises or vibrations during operation.
- Monitor pressure gauges to ensure the pump is operating within specified limits.

Maintenance Guidelines

Routine maintenance is essential for prolonging the life of your Graco T3 Transfer Pump and ensuring its efficient operation. Follow these maintenance guidelines:

Daily Maintenance

- Inspect the pump for any visible wear or damage.
- Check all hoses and connections for leaks.
- Clean the exterior of the pump to prevent dirt and debris build-up.

Weekly Maintenance

- Lubricate moving parts as recommended in the user manual.
- Check the inlet filter and clean or replace it if necessary.
- Test the safety features to ensure they are functioning correctly.

Monthly Maintenance

- Conduct a more thorough inspection of all components.
- Tighten any loose screws or bolts.
- Replace worn hoses and seals to prevent leaks.

Long-term Storage Procedures

If the pump will not be used for an extended period, follow these steps for proper storage:

1. Clean the Pump: Remove all fluid residues and clean the pump thoroughly.
2. Drain Hoses: Ensure all hoses are drained and free of fluid.
3. Cover the Pump: Use a protective cover to shield the pump from dust and debris.
4. Store in a Dry Location: Keep the pump in a dry, temperature-controlled environment to prevent damage.

Troubleshooting Common Issues

Despite proper care and maintenance, issues can arise. Here are some common problems and their solutions:

Problem: Pump does not start

- Check Power Source: Ensure the pump is plugged in or the air supply is connected.
- Inspect Circuit Breaker: Reset the circuit breaker if it has tripped.

Problem: Low Flow Rate

- Check for Blockages: Inspect hoses and filters for any obstructions.
- Verify Settings: Ensure the flow rate settings are correctly adjusted.

Problem: Unusual Noises or Vibrations

- Inspect for Loose Parts: Tighten any loose screws or bolts.
- Check for Worn Bearings: Replace bearings if necessary.

Problem: Fluid Leaks

- Inspect Connections: Check all hose connections for tightness.
- Replace Worn Seals: If leaks persist, inspect and replace seals.

Conclusion

The Graco T3 Transfer Pump is an invaluable tool for efficiently transferring a variety of fluids in different industries. By understanding its features, following proper setup and operating procedures, and adhering to maintenance guidelines, users can ensure optimal performance and extend the life of the pump. Regular troubleshooting and attention to detail will further enhance the reliability and effectiveness of the Graco T3 Transfer Pump, making it a trusted choice for fluid transfer applications.

Frequently Asked Questions

What are the key features of the Graco T3 transfer pump?

The Graco T3 transfer pump features a lightweight design, a high flow rate of up to 18 gallons per minute, and compatibility with various fluids, including diesel and biodiesel. It also includes a built-in adjustable pressure relief valve for safety.

Where can I find the Graco T3 transfer pump manual?

The Graco T3 transfer pump manual can be found on the official Graco website under the 'Support' or 'Resources' section. You can also check the product packaging or contact Graco customer service for a physical copy.

How do I troubleshoot common issues with the Graco T3 transfer pump?

Common issues can include low flow rate or pump not starting. To troubleshoot, check for clogs in the hoses, ensure the power supply is connected, and inspect the filters for dirt. Always refer to the manual for specific troubleshooting steps.

Is the Graco T3 transfer pump suitable for pumping flammable liquids?

Yes, the Graco T3 transfer pump is designed to handle various liquids, including flammable ones, but it is crucial to follow safety guidelines in the manual and ensure proper ventilation and grounding during operation.

What maintenance is required for the Graco T3 transfer pump?

Regular maintenance includes checking and replacing filters, inspecting hoses for wear, lubricating moving parts, and cleaning the pump after each use. The manual provides detailed maintenance schedules and procedures to ensure optimal performance.

Find other PDF article:

<https://soc.up.edu.ph/35-bold/Book?trackid=kBW29-8056&title=kansas-football-coach-history.pdf>

[Graco T3 Transfer Pump Manual](#)

Graco Inc.

Graco is one of the world's leading suppliers of fluid management products and packages. We manufacture equipment to move, measure, mix, control, dispense and spray fluids that are part ...

Graco Inc.

Graco est l'un des principaux fournisseurs mondiaux de produits et d'emballages pour la gestion des liquides. Nous fabriquons des équipements pour déplacer, mesurer, mélanger, contrôler, ...

Worldwide Leaders in Fluid Handling Products | Graco

Graco manufactures and markets premium equipment to move, measure, control, dispense and spray a wide variety of fluid and powder materials. Our 4,000 employees serve thousands of ...

Find Manuals & Repair Parts for Graco Products

Information for operations, replacement parts, troubleshooting, technical data and warranty information for Graco products can be found in the instruction manuals.

Find a Distributor - Where to Buy Graco Products

Graco partners with authorized distributors around the world to provide you with local sales and service support, application expertise and availability of inventory, including parts and ...

Graco Inc. Signs Definitive Agreement to Acquire Color Service s.r.l ...

Graco Inc. supplies technology and expertise for the management of fluids and coatings in both industrial and commercial applications. It designs, manufactures and markets systems and ...

Company History | Graco | Nearly 100 Years in the Making

Follow the history of Graco from its founding by the Gray brothers in 1926 to present day. Growing from local family business in the USA, to a global company of 3,300 people with locations ...

Chemical Compatibility Guide - Graco Inc.

The following information is intended to be used as a general guideline for pump material selection. The information accuracy of these ratings cannot be guaranteed, nor is it a complete ...

Contact Us | Graco

All your Graco customer service and product support information in North America is available here. You're covered through our A+ Customer Service program.

Ultra Max II 695 ProContractor Series Electric Airless Sprayer

A: For that material I would recommend something larger than the 650 PC. That unit supports a maximum .029 Tip orifice. I would recommend something like the 1095 to spray this material. ...

Canadian Tire

Get anything from auto parts to home décor, outdoor living products, fitness/sports equipment, tools and more at Canadian Tire online or one of 500+ stores.

CTFS Triangle Mastercard Online Account Login - Canadian Tire ...

Manage your Triangle Mastercard online account with CTFS. Conveniently login and access your account details. Experience secure and easy account management.

Account | Triangle - Canadian Tire

If you are not approved for a card at the above rates, Canadian Tire Bank may still issue you a card at the following annual interest rates: 25.99% for all charges (excluding cash transactions ...

Identity Portal - ctid.cantire.com

Access the Identity Portal for secure login and management of your Canadian Tire account.

My Account - Can Tires

Login Username or email address*Required Password*Required Remember me

Shop Canada's Top Department Store Online & at 500+ Locations

Get anything from auto parts to home décor, outdoor living products, fitness/sports equipment, tools and more at Canadian Tire online or one of 500+ stores.

Canadian Tire Bank - Mastercard and Banking Solutions

Earn Canadian Tire Money® back on almost anything including 4% at your favourite stores and 5¢ per litre at Gas+ and Petro-Canada locations. All this plus more great benefits, with no ...

Triangle Digital Banking | Triangle - Canadian Tire

We've made it easy for you to manage your Canadian Tire Bank Credit Card Accounts and Deposit Account. Enrol to enjoy convenient features from your home computer, phone or tablet.

triangle-signin | Triangle - Canadian Tire

Access Triangle Rewards® across our family companies. Forgot your password? Not a Triangle Rewards member?

Se connecter à son compte en ligne Mastercard ... - Canadian Tire ...

Faites confiance aux Service financiers Canadian Tire pour gérer votre compte Mastercard Triangle en ligne. Connectez-vous en toute commodité et accédez facilement aux ...

"Access the Graco T3 transfer pump manual for essential tips and troubleshooting. Learn more about optimizing your pump's performance and maintenance today!"

[Back to Home](#)