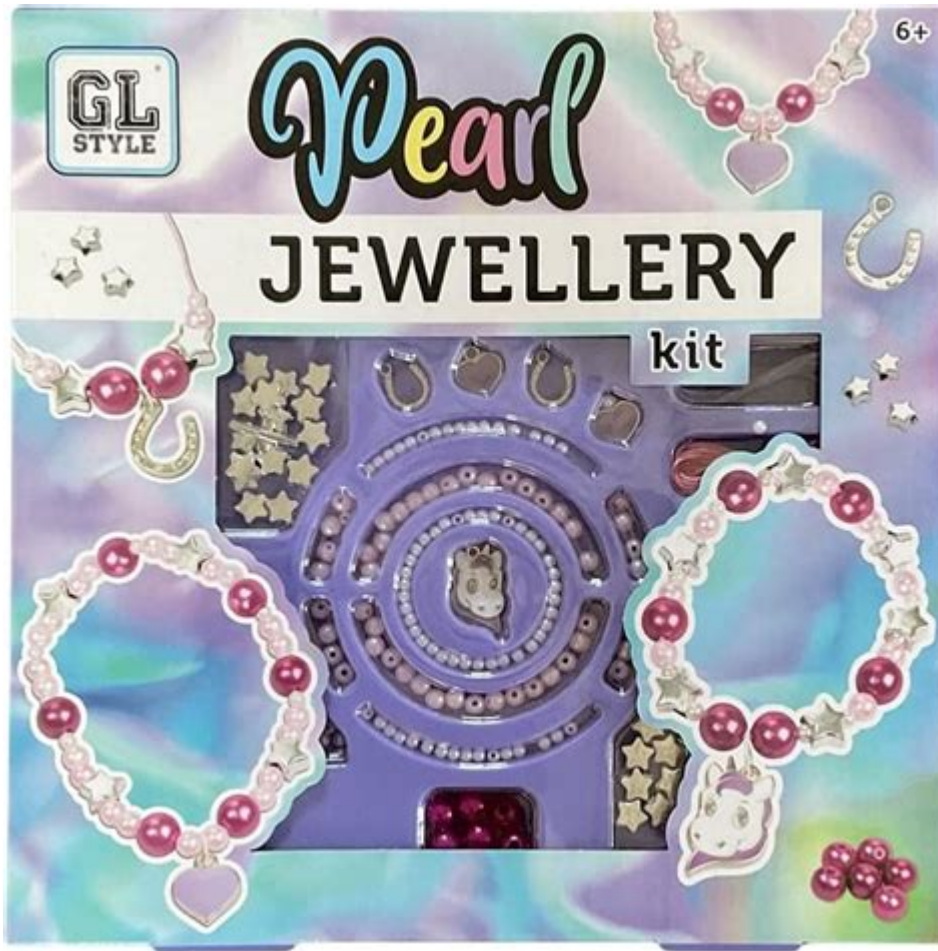


GL Style Bead And Weave Instructions



GL style bead and weave instructions are essential for anyone interested in the art of bead weaving. This craft combines creativity with the precision of intricate patterns, allowing artisans to create stunning jewelry and decorative items. In this article, we will delve into the methods and techniques involved in GL style bead weaving, provide a comprehensive guide to materials needed, and offer step-by-step instructions for several popular patterns.

Understanding GL Style Bead Weaving

GL style bead weaving refers to a specific approach that emphasizes the use of glass (GL) beads in a variety of designs. This style is characterized by its vibrant colors, diverse shapes, and intricate patterns. Bead weaving can be done using various techniques, such as peyote stitch, brick stitch, and loom weaving, each offering unique results.

Materials Needed for GL Style Bead Weaving

To get started with GL style bead weaving, you will need the following materials:

- **Glass beads:** Choose a variety of sizes and colors to achieve different effects.
- **Beading thread:** Nylon or fireline thread works best for durability.
- **Beading needle:** A size 10 or 12 needle is typically suitable for glass beads.
- **Scissors:** For trimming your thread.
- **Bead mat:** A soft surface to prevent beads from rolling away.
- **Optional tools:** Pliers, thread conditioner, and a bead spinner for efficiency.

Basic Techniques in GL Style Bead Weaving

Before jumping into specific patterns, it's essential to familiarize yourself with some fundamental techniques used in GL style bead weaving.

1. Threading the Needle

Start by cutting a length of beading thread about three times the desired length of your project. Thread the needle and tie a knot at the end of the thread. This knot will prevent beads from slipping off as you work.

2. Starting Your Weave

Depending on the chosen technique, the starting method will vary:

- Peyote Stitch: Start with a foundation row of beads. String an odd number of beads on your thread, then pass the needle back through the first bead to form a loop.
- Brick Stitch: Begin with a row of beads strung directly onto the thread, then add additional rows by connecting new beads to the previous ones.

3. Tension Control

Maintaining consistent tension is crucial in bead weaving. Too loose, and your project may sag; too tight, and beads may crack or break. Practice makes perfect, so pay attention to the feel of your thread and beads as you weave.

Step-by-Step Instructions for Popular Patterns

Now that you have a grasp of the basics, let's explore some popular GL style bead weaving patterns. We will provide detailed instructions for a simple bracelet, a pair of earrings, and a decorative pendant.

Pattern 1: Simple GL Bead Bracelet

Materials Needed:

- Glass beads (choose your favorite colors)
- Beading thread
- Beading needle
- Clasp (optional)

Instructions:

1. Prepare Your Thread: Cut a length of thread as mentioned earlier and tie a knot at the end.
2. String Your Beads: For a basic bracelet, string about 20 beads onto your thread. Adjust the number based on your wrist size.
3. Secure the Ends: Once you have your desired length, tie a knot using both ends of the thread or attach a clasp for easy wear.
4. Finishing Touches: Trim any excess thread and secure any knots with a drop of clear glue if needed.

Pattern 2: GL Bead Earrings

Materials Needed:

- Glass beads (two different colors for contrast)
- Beading thread
- Beading needle
- Earring hooks

Instructions:

1. Create the Base: Start by stringing 10 beads of the first color onto your thread.
2. Add Contrast: Next, add 5 beads of the second color.
3. Weaving Technique: Use a simple brick stitch to add more rows using alternating colors.
4. Attach to Hooks: Once you reach your desired length, tie off your thread and attach the completed piece to an earring hook.
5. Repeat: Make a second earring to complete the set.

Pattern 3: Decorative GL Bead Pendant

Materials Needed:

- Glass beads (at least three colors)
- Beading thread
- Beading needle
- Jump ring (to attach to a chain)

Instructions:

1. Base Row: String 15 beads of your first color to create a foundation.
2. Peyote Stitch: Begin a peyote stitch by adding a row of contrasting beads on top, skipping the first bead from the base.
3. Continue Weaving: Add additional rows using alternating colors, creating a geometric design as desired.
4. Finish the Pendant: Once the pendant reaches the desired size, create a loop at the top with your thread and secure it with knots.
5. Attach to Chain: Use a jump ring to attach the pendant to a chain or cord.

Tips for Successful GL Style Bead Weaving

- Experiment with Colors: Don't hesitate to mix and match different bead colors and sizes to create unique designs.
- Practice Makes Perfect: Start with simple patterns before advancing to more complex designs.
- Take Breaks: If you feel frustrated or fatigued, take a break to prevent mistakes that could lead to rework.
- Join a Community: Engage with other bead weavers online or in-person to share tips, patterns, and inspiration.

Conclusion

GL style bead and weave instructions open up a world of creative possibilities for crafters. By familiarizing yourself with the necessary materials, techniques, and patterns, you will be well on your way to creating stunning beadwork. Whether you're making jewelry for yourself or as gifts for others, the joy of bead weaving lies in the process and the unique creations you can produce. Happy weaving!

Frequently Asked Questions

What materials do I need for GL style bead and weave

projects?

For GL style bead and weave projects, you typically need seed beads, weaving thread or nylon cord, a beading needle, scissors, and a bead mat for easy handling.

What are the basic techniques used in GL style bead and weave?

The basic techniques include a variety of weaving stitches such as peyote, brick stitch, and herringbone stitch, which create intricate patterns and designs.

How do I start a GL style bead and weave project?

To start, choose your design, gather your materials, and thread your needle. Begin by creating a foundation row using your chosen stitch, then follow your pattern.

Can I use different types of beads in GL style weaving?

Yes, you can use different types of beads, such as glass, crystal, and metal beads, but ensure they have similar hole sizes to maintain consistency in your weaving.

What is the difference between GL style and traditional bead weaving?

GL style bead weaving often incorporates more complex patterns and color variations, while traditional methods may focus on simpler, repetitive designs.

Are there any beginner-friendly GL style bead and weave patterns?

Yes, there are many beginner-friendly patterns available online, such as simple bracelets or keychains that use basic stitches to help you get started.

How can I troubleshoot common problems in GL style bead weaving?

Common problems include uneven tension and misplaced beads. To troubleshoot, check your tension regularly, and refer to your pattern to ensure you are following it accurately.

Find other PDF article:

<https://soc.up.edu.ph/09-draft/pdf?trackid=fTk23-5261&title=big-ideas-learning-llc-answer-key.pdf>

GL Style Bead And Weave Instructions

GL?GL mikumi BL
...

Unlock your creativity with our comprehensive GL style bead and weave instructions. Discover how to create stunning designs today!

[Back to Home](#)