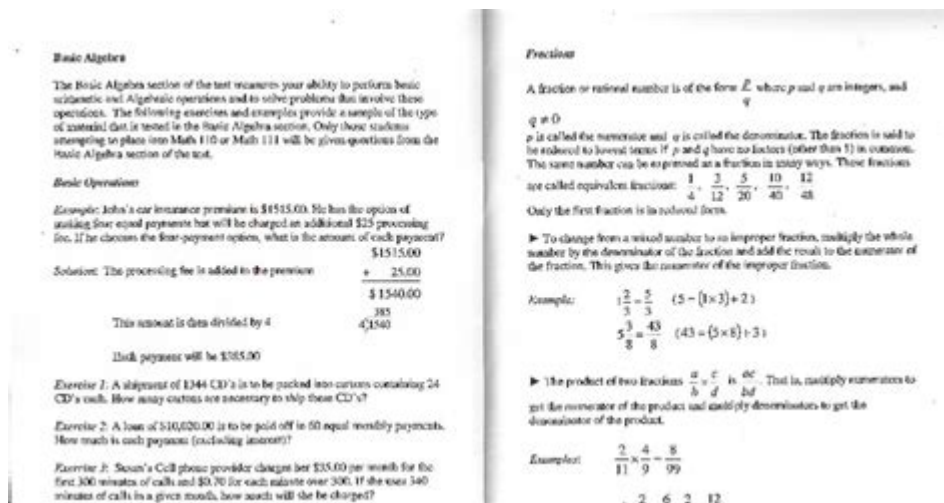


Gmu Math Placement Test Answers



GMU Math Placement Test Answers play a crucial role in determining a student's readiness for college-level mathematics courses at George Mason University (GMU). The math placement test is designed to assess a student's mathematical skills and knowledge, ensuring they are placed in the appropriate course that aligns with their capabilities and academic goals. This article will delve into the structure of the GMU Math Placement Test, its importance, preparation strategies, and common questions regarding the test, as well as how to interpret the results.

Understanding the GMU Math Placement Test

The GMU Math Placement Test is a standardized assessment that evaluates students' quantitative skills. It covers a range of mathematical topics that are foundational for success in college-level courses. The test is primarily intended for incoming freshmen and transfer students who wish to enroll in math-intensive programs or courses.

Purpose of the Test

The primary purposes of the GMU Math Placement Test include:

1. **Course Placement:** To determine the most suitable mathematics course for each student based on their existing knowledge and skills.
2. **Identify Gaps:** To identify areas where students may need additional support or study before tackling higher-level math courses.
3. **Streamline Academic Pathways:** To help students progress efficiently through their academic programs without unnecessary delays caused by enrolling in courses that are too advanced or too basic.

Structure of the Test

The GMU Math Placement Test typically consists of multiple-choice questions covering various topics. While the exact number of questions may vary, the test generally includes:

- Algebra
- Trigonometry
- Precalculus
- Functions and Graphs
- Basic Calculus Concepts

The test is administered online, and students are usually given a specific time frame to complete it. It is important to note that calculators may not be allowed during the test, so students should be prepared to perform calculations manually.

Importance of the Math Placement Test

Taking the GMU Math Placement Test is crucial for several reasons:

1. Academic Success: Placing students in the right course increases their chances of success in mathematics, which is often a gateway to other disciplines.
2. Confidence Building: Proper placement helps in building confidence, as students are less likely to struggle if they start at the right level.
3. Time Management: By avoiding courses that are not aligned with their skills, students can save time and focus on classes that contribute to their degree progress.

Preparing for the GMU Math Placement Test

Preparation for the GMU Math Placement Test is essential for achieving the best possible results. Here are some strategies that students can employ:

Review Basic Concepts

Before taking the test, students should review fundamental mathematics concepts, including:

- Basic arithmetic (addition, subtraction, multiplication, division)
- Algebraic equations and inequalities
- Functions and their properties
- Graphing techniques
- Trigonometric identities

Utilize Online Resources

There are numerous online platforms that offer practice problems and tutorials tailored to the GMU Math Placement Test. Some recommended resources include:

- Khan Academy: Provides comprehensive lessons and practice exercises on various math topics.
- IXL: Offers interactive questions that adapt to a student's skill level.
- GMU's Math Department Website: May provide specific resources or sample questions related to the placement test.

Practice Tests

Taking practice tests can significantly boost a student's confidence and preparation. Students should:

1. Simulate Test Conditions: Practice under timed conditions to get a feel for the pacing of the actual test.
2. Review Mistakes: After completing practice tests, students should carefully review incorrect answers to understand their mistakes.

Common Questions About the GMU Math Placement Test

Many students have questions about the GMU Math Placement Test. Here are some frequently asked questions:

1. How is the test scored?

The GMU Math Placement Test is typically scored based on the number of correct answers. There is no penalty for incorrect answers, so students are encouraged to attempt all questions. The final score will determine the level of math course a student is eligible to enroll in.

2. Can I retake the test?

Yes, students are usually allowed to retake the GMU Math Placement Test if they feel they can improve their score. However, it is advisable to prepare adequately before retaking the test to avoid unnecessary frustration.

3. What if I have a strong background in math?

Students with a strong background in mathematics may still benefit from taking the placement test,

as it can help them identify the most advanced course they are qualified to take. This can ensure that they are challenged appropriately in their academic journey.

4. What resources are available for students who need help?

GMU provides various resources for students who may need additional support in mathematics, including:

- Tutoring Services: The university may offer free tutoring services for students struggling with math concepts.
- Study Groups: Joining study groups can help students collaborate and learn from one another.
- Office Hours: Students can attend office hours held by math faculty for personalized assistance.

Interpreting Your Results

After completing the GMU Math Placement Test, students will receive a score that corresponds to specific math courses they are eligible to enroll in. Understanding this score is critical for making informed decisions about course selection.

Course Placement Levels

Typically, scores are categorized into different placement levels, which may look something like this:

- Level 1: Introductory or remedial math courses
- Level 2: College Algebra
- Level 3: Precalculus
- Level 4: Calculus or higher-level courses

Students should consult the GMU Math Department's guidelines to understand the specific courses associated with their scores.

Conclusion

The GMU Math Placement Test is an essential step for incoming students at George Mason University, as it ensures that they are positioned in the most suitable mathematics course. By understanding the test's structure, preparing effectively, and interpreting results accurately, students can set themselves up for success in their academic endeavors. Whether they are looking to pursue a degree in science, engineering, business, or any other field, a solid foundation in mathematics is vital for their future success.

Frequently Asked Questions

What topics are covered in the GMU math placement test?

The GMU math placement test typically covers topics such as algebra, precalculus, and basic calculus concepts. It assesses students' readiness for college-level math courses.

How can I prepare for the GMU math placement test?

To prepare for the GMU math placement test, you can review high school algebra and precalculus topics, practice with sample questions, and use online resources or study guides specifically designed for placement tests.

Is there a study guide available for the GMU math placement test?

Yes, GMU provides resources on their website, including sample questions and study materials. Additionally, there are third-party study guides and practice tests available online.

What is the passing score for the GMU math placement test?

The passing score for the GMU math placement test varies depending on the specific math course you wish to enroll in. Generally, a score that meets or exceeds the threshold set by the math department is considered passing.

Can I retake the GMU math placement test if I am not satisfied with my score?

Yes, students are allowed to retake the GMU math placement test, but there may be specific guidelines and waiting periods for retaking the test. It's advisable to check with the university's testing center for details.

Find other PDF article:

<https://soc.up.edu.ph/36-tag/files?docid=jqR84-9664&title=language-and-linguistic-diversity-in-the-us-an-introduction.pdf>

Gmu Math Placement Test Answers

Math Placement Test - GMU

Math Placement Test - GMU
17121 GMU
...

Math Placement Test - GMU

George Mason University GMU 1972

GMU 2014 - 2015 ...

GMU 2014 - 2015

CS 2014 cs.gmu.edu/prospective- Prospective Student 2014-2015 future ...

GMV (Gross Merchandise Volume) 2014 ...

Apr 13, 2014 · GMV (Gross Merchandise Volume) 2014, TMALL 2014 ...

GNU 2014 Linux 2014 - 2015

Unix 2014 RMS 2014 GNU 2014 Unix 2014 ...

2014? - 2015

2014 2014 2014 17 121 GMU 2014 GMU 2014 ...

2014 - 2015

George Mason University 2014 GMU 2014 ...

GMU 2014 - 2015

CS 2014 cs.gmu.edu/prospective- Prospective Student 2014-2015 ...

GMV (Gross Merchandise Volume) 2014 ...

Apr 13, 2014 · GMV (Gross Merchandise Volume) 2014, TMALL 2014 ...

GNU 2014 Linux 2014 - 2015

Unix 2014 RMS 2014 GNU 2014 Unix ...

"Unlock your success with GMU math placement test answers! Discover strategies and tips to ace the exam. Learn more to boost your scores today!"

[Back to Home](#)