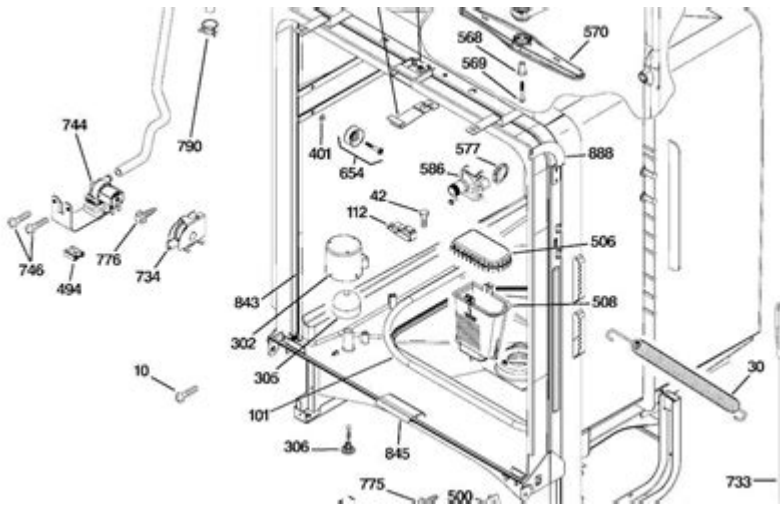


Ge Appliance Repair Manual Fridge Model 18



GE appliance repair manual fridge model 18 is an essential resource for anyone looking to troubleshoot and fix issues with their GE refrigerator. This model, known for its reliability and efficiency, is widely used in many households. However, like any appliance, it can encounter problems over time. This article will guide you through common issues, maintenance tips, and the importance of the repair manual, ensuring you can keep your GE fridge running smoothly.

Understanding the GE Model 18 Refrigerator

The GE Model 18 refrigerator is designed for optimal performance and energy efficiency. It typically features a top freezer layout, adjustable shelves, and ample storage space. Understanding the components and functions of this model is crucial for effective troubleshooting. The key parts include:

- Compressor
- Condenser coils
- Evaporator coils
- Thermostat
- Door seals

Each component plays a significant role in the refrigerator's operation. Familiarity with these parts will help you identify issues more effectively.

Common Issues with GE Model 18 Refrigerators

While the GE Model 18 is generally reliable, users may encounter several common issues. Let's explore these problems and their potential solutions.

1. Refrigerator Not Cooling

One of the most frequent complaints is that the refrigerator isn't cooling properly. This issue can arise from various causes, including:

- Dirty condenser coils: Dust and debris can accumulate on the coils, causing the refrigerator to overheat. Regular cleaning is necessary.
- Faulty thermostat: If the thermostat is malfunctioning, it may not trigger the compressor to run. Testing and replacing it can resolve the issue.
- Blocked air vents: Ensure that there are no obstructions around the air vents, which can impede airflow.

2. Excessive Frost Build-Up

Frost build-up in the freezer can lead to decreased efficiency. Common causes include:

- Damaged door seals: If the seals are torn or worn, warm air can enter, causing frost. Inspect and replace seals as needed.
- Defrost timer problems: A malfunctioning defrost timer can cause the unit to not properly defrost. Testing and replacing the timer may be necessary.

3. Unusual Noises

Strange noises can indicate various issues. Here are some potential culprits:

- Compressor noise: A loud compressor can signal a problem with the unit's cooling system. Consider consulting a technician if the noise persists.
- Ice maker sounds: If your fridge has an ice maker, it may produce sounds when filling with water or ejecting ice. This is typically normal unless the sounds are excessive.

Maintenance Tips for Your GE Refrigerator

Preventative maintenance is essential for ensuring the longevity and efficiency of your GE Model 18 refrigerator. Here are some practical tips:

1. **Regular Cleaning:** Clean the condenser coils at least twice a year. This will improve efficiency and prolong the lifespan of your fridge.
2. **Check Door Seals:** Inspect the door seals for damage or wear. Replace them if necessary to prevent air leaks.
3. **Organize Your Fridge:** Avoid overcrowding, which can obstruct airflow and reduce efficiency.
4. **Temperature Settings:** Keep the refrigerator at 37°F (3°C) and the freezer at 0°F (-18°C) for optimal performance.
5. **Defrost Regularly:** If your model is not frost-free, ensure you defrost it as needed to prevent excessive frost build-up.

Utilizing the GE Appliance Repair Manual

The GE appliance repair manual for the Model 18 fridge is an invaluable tool for troubleshooting and repairs. It provides detailed information on the appliance's components, wiring diagrams, and step-by-step instructions for repairs.

Benefits of Using the Repair Manual

- **Guided Troubleshooting:** The manual offers a systematic approach to diagnosing issues, helping you to pinpoint the problem quickly.
- **Parts Identification:** Understanding the various parts and their functions enables easier identification of problematic components.
- **Safety Precautions:** The manual includes essential safety instructions, ensuring that repairs are conducted safely.

Accessing the Repair Manual

You can typically find the GE appliance repair manual for the Model 18 refrigerator through several avenues:

- **GE's Official Website:** The manufacturer's website often has downloadable manuals in PDF format.
- **Customer Support:** You can contact GE customer support for assistance in locating the manual.
- **Online Communities:** Many appliance repair forums and websites share manuals and troubleshooting tips.

When to Call a Professional

While many issues can be resolved by following the manual, some problems may require professional assistance. Consider calling a technician if you encounter:

- Refrigerant Leaks: Handling refrigerants requires specialized knowledge and equipment.
- Electrical Issues: If you suspect electrical problems, it's best to consult a professional to avoid safety hazards.
- Major Component Failures: If the compressor or evaporator fails, professional repair or replacement is often the best course of action.

Conclusion

Understanding how to maintain and troubleshoot your GE Model 18 refrigerator is essential for ensuring its longevity and efficiency. The **GE appliance repair manual fridge model 18** serves as an essential resource for diagnosing and fixing common issues. By following the maintenance tips outlined in this article and utilizing the repair manual effectively, you can keep your refrigerator running smoothly for years to come. If problems persist, don't hesitate to seek professional help to ensure your appliance is repaired safely and effectively.

Frequently Asked Questions

How do I find the GE appliance repair manual for my fridge model 18?

You can find the repair manual for your GE fridge model 18 by visiting the official GE Appliances website, navigating to the support section, and entering your model number. You can also check for physical copies included with your appliance or look for PDF versions available online.

What common issues can I troubleshoot in my GE fridge model 18?

Common issues include the fridge not cooling, unusual noises, water leaks, and door seal problems. You can troubleshoot these issues by checking the temperature settings, inspecting the condenser coils, ensuring the door seals are intact, and examining the water supply line.

Where can I download the PDF version of the GE fridge model 18 repair manual?

The PDF version of the GE fridge model 18 repair manual can typically be downloaded from the GE Appliances official website under the support or manuals section. You may also find it on third-party appliance repair websites.

What tools do I need for basic repairs on my GE fridge model 18?

For basic repairs on your GE fridge model 18, you will need a screwdriver set, a multimeter for electrical testing, pliers, a level, and possibly a vacuum for cleaning condenser coils. Always ensure to disconnect the power before starting any repairs.

How often should I perform maintenance on my GE fridge model 18?

It's recommended to perform maintenance on your GE fridge model 18 every six months. This includes cleaning the condenser coils, checking door seals for wear, and ensuring that the interior and exterior are clean to maintain optimal performance.

Find other PDF article:

<https://soc.up.edu.ph/37-lead/Book?trackid=ZOW58-4832&title=lessons-in-chemistry-a-novel-bonnie-garmus.pdf>

Ge Appliance Repair Manual Fridge Model 18

Download and install Google Chrome

How to install Chrome Important: Before you download, you can check if Chrome supports your operating system and other system requirements.

□□□□□□□□□? - □□

16

...

GE Online $\square\square\square\square$ R $\square\square\square$ - $\square\square\square\square$

GE Online R

Under review Awaiting Recommendation ...

under review [REDACTED] under review [REDACTED] awaiting
recommendaion[REDACTED] ...

edge -

edge win10

M -

Dec 27, 2023 · M

GeForceMX150 -

Jun 10, 2017 · MX150 2GB GDDR5 1469mhz boost 1532mhz 6008mhz GP108 3 SM 384SP

? -

[1] “XXX” “XXX” “XXX” [2] “”

Gemini Apps Help - Google Help

Official Gemini Apps Help Center where you can find tips and tutorials on using Gemini Apps and other answers to frequently asked questions.

win11 -

win11

Download and install Google Chrome

How to install Chrome Important: Before you download, you can check if Chrome supports your operating system and other system requirements.

? -

16

GE Online R -

GE Online R

Under reviewAwaiting Recommendation ...

under review awaiting recommendaion

edge -

edge win10

M -

Dec 27, 2023 · M

GeForceMX150 -

Jun 10, 2017 · MX150 2GB GDDR5 1469mhz boost 1532mhz 6008mhz GP108 3 SM 384SP

? -

[1] “XXX” “XXX” “XXX” [2] “”

Gemini Apps Help - Google Help

Official Gemini Apps Help Center where you can find tips and tutorials on using Gemini Apps and other answers to frequently asked questions.

win11????????? - ??

win11??...

Discover the essential GE appliance repair manual for fridge model 18. Get troubleshooting tips and step-by-step guidance for efficient repairs. Learn more now!

[Back to Home](#)