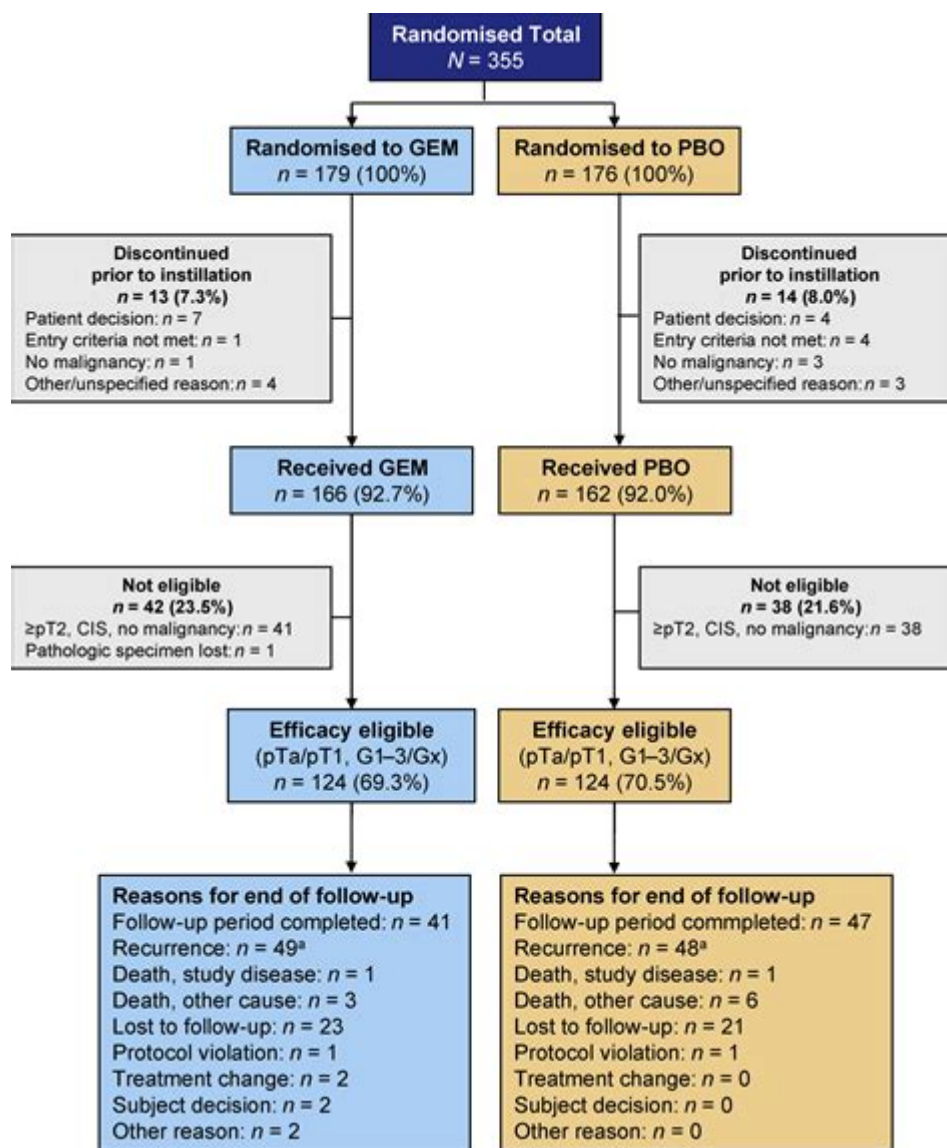


Gemcitabine Bladder Instillation Patient Education



Gemcitabine bladder instillation patient education is an essential aspect of managing bladder cancer treatment. As patients navigate their diagnosis and treatment options, understanding the procedure, benefits, and potential side effects of gemcitabine instillation can empower them to make informed decisions. This article aims to provide comprehensive patient education regarding gemcitabine bladder instillation, covering what patients can expect, the procedure's benefits, side effects, and post-treatment care.

What is Gemcitabine Bladder Instillation?

Gemcitabine is a chemotherapy medication commonly used in the treatment of various cancers, including bladder cancer. In the context of bladder cancer,

it is administered directly into the bladder through a procedure known as bladder instillation. This method allows for higher concentrations of the drug to target cancerous cells while minimizing systemic side effects.

The Procedure of Gemcitabine Bladder Instillation

The process of gemcitabine bladder instillation typically involves several key steps:

1. **Preparation:** Before the procedure, patients may be asked to empty their bladder and may need to stop taking certain medications. It is crucial to follow the healthcare provider's instructions.
2. **Administration:** The gemcitabine solution is usually administered through a catheter inserted into the bladder. The healthcare provider will ensure that the drug is distributed evenly throughout the bladder.
3. **Retention:** After the instillation, patients are typically advised to retain the solution in their bladder for a specific period, usually around 30 minutes. This allows the medication to work effectively against the cancer cells.
4. **Post-Procedure Care:** Once the retention time is completed, patients will be instructed to void the bladder. It is essential to follow any post-procedure care guidelines provided by the healthcare team.

Benefits of Gemcitabine Bladder Instillation

Gemcitabine bladder instillation offers several advantages for patients with bladder cancer:

- **Localized Treatment:** By delivering the medication directly to the bladder, the treatment targets cancer cells more effectively compared to systemic chemotherapy.
- **Reduced Side Effects:** Localized treatment can lead to fewer systemic side effects, allowing patients to maintain a better quality of life during their treatment.
- **Preservation of Bladder Function:** Gemcitabine instillation can help manage tumor growth while preserving bladder function, which is critical for overall health.

- **Convenience:** The procedure is relatively simple and can often be done in an outpatient setting, minimizing disruptions to the patient's daily life.

Potential Side Effects of Gemcitabine Bladder Instillation

While gemcitabine bladder instillation is generally well-tolerated, patients should be aware of potential side effects, which may include:

- **Local Irritation:** Some patients may experience bladder irritation, leading to symptoms such as urgency, frequency, or pain during urination.
- **Hematuria:** Blood in the urine can occur, particularly shortly after the instillation. This symptom should be reported to a healthcare provider if persistent.
- **Allergic Reactions:** Although rare, some patients may experience allergic reactions to the medication, which could manifest as rash, itching, or swelling.
- **Fatigue:** General fatigue may occur, although it is often less severe than that experienced with systemic chemotherapy.

Patients should communicate openly with their healthcare providers regarding any side effects they experience, as some may require medical intervention or adjustment of the treatment plan.

Post-Treatment Care and Follow-Up

Post-treatment care is crucial to ensure the effectiveness of the gemcitabine bladder instillation and the overall well-being of the patient. Here are some essential aspects of post-treatment care:

Hydration

Staying well-hydrated is vital after a gemcitabine instillation. Drinking plenty of fluids can help flush the medication out of the bladder and reduce the risk of irritation.

Monitoring Symptoms

Patients should keep track of any new or worsening symptoms, such as:

- Increased pain or discomfort during urination
- Persistent hematuria
- Signs of infection, such as fever or chills

If any concerning symptoms arise, patients should contact their healthcare provider promptly.

Follow-Up Appointments

Regular follow-up appointments are essential for monitoring the patient's response to treatment and for assessing any potential recurrence of cancer. During these visits, healthcare providers may conduct imaging tests or cystoscopies to evaluate the bladder's condition.

Emotional and Psychological Support

Receiving a diagnosis of bladder cancer and undergoing treatment can be emotionally challenging for patients. It is essential to acknowledge and address the psychological aspects of cancer treatment. Here are some strategies for emotional support:

- **Seek Support Groups:** Joining a support group can provide patients with a sense of community and understanding from others facing similar challenges.
- **Communicate with Loved Ones:** Openly discussing feelings and experiences with family and friends can help alleviate stress and provide emotional comfort.
- **Professional Counseling:** Speaking with a mental health professional who specializes in oncology can offer coping strategies and emotional support tailored to the patient's needs.

Conclusion

In conclusion, **gemcitabine bladder instillation patient education** is critical for empowering individuals undergoing bladder cancer treatment. Understanding the procedure, benefits, potential side effects, and post-treatment care can significantly enhance the patient experience. By actively participating in their treatment journey and communicating with their healthcare team, patients can better manage their health and improve their quality of life during and after treatment.

Frequently Asked Questions

What is gemcitabine, and how is it used in bladder cancer treatment?

Gemcitabine is a chemotherapy medication used to treat bladder cancer by instilling it directly into the bladder to target cancer cells while minimizing side effects.

How is gemcitabine administered during bladder instillation?

Gemcitabine is typically administered through a catheter inserted into the bladder, allowing the medication to remain in contact with the bladder lining for a specified period before being drained.

What are the common side effects of gemcitabine bladder instillation?

Common side effects may include bladder irritation, increased urgency to urinate, blood in urine, and mild flu-like symptoms. It's important to report any severe reactions to your healthcare provider.

How should I prepare for a gemcitabine bladder instillation procedure?

Before the procedure, inform your healthcare provider of any medications you are taking, and follow any specific instructions regarding food and fluid intake. Arranging for transportation is also advisable.

What should I do if I miss a scheduled gemcitabine instillation appointment?

If you miss an appointment, contact your healthcare provider as soon as possible to reschedule, as maintaining the treatment schedule is important for effectiveness.

Are there any dietary restrictions I should follow during gemcitabine treatment?

There are generally no specific dietary restrictions, but maintaining a balanced diet and staying hydrated is recommended to support overall health during treatment.

How can I manage side effects from gemcitabine bladder instillation?

Managing side effects may include drinking plenty of fluids, using over-the-counter pain relievers for discomfort, and following any specific recommendations from your healthcare provider.

When should I contact my healthcare provider during gemcitabine treatment?

Contact your healthcare provider if you experience severe side effects, signs of infection (such as fever or chills), or any new symptoms that concern you during or after treatment.

Find other PDF article:

<https://soc.up.edu.ph/55-pitch/pdf?docid=akH45-5080&title=splatoon-3-weapons-guide.pdf>

[Gemcitabine Bladder Instillation Patient Education](#)

gemcitabine - Cancer Care Ontario

For treating certain types of cancers such as bladder, pancreas, lung, breast and other types of cancer.

Gemcitabine Uses, Side Effects & Warnings - Drugs.com

Aug 14, 2023 · Gemcitabine is used to treat cancers of the pancreas, lung, ovary, and breast. Gemcitabine is sometimes given with other cancer medicines, or when other cancer ...

[Gemcitabine - Wikipedia](#)

Gemcitabine, sold under the brand name Gemzar, among others, [1] is a chemotherapy medication used to treat cancers. [3] It is used to treat testicular cancer, [4] breast cancer, ...

DRUG NAME: Gemcitabine - BC Cancer

The cytotoxic effects of gemcitabine are exerted through incorporation of dFdCTP into DNA with the assistance of dFdCDP, resulting in inhibition of DNA synthesis and induction of ...

[Gemcitabine Chemotherapy: Uses, Delivery, Side Effects, and More](#)

Nov 10, 2022 · Gemcitabine chemotherapy is used for advanced cancers of the breast, lungs, ovaries, and pancreas. Learn about delivery, side effects, effectiveness, and more.

Gemcitabine (intravenous route) - Side effects & uses

Mar 1, 2025 · Gemcitabine injection is used together with other medicines (eg, carboplatin) to treat patients with advanced ovarian cancer that has come back at least 6 months after ...

Gemcitabine dosing, indications, interactions, adverse effects, and ...

Medscape - Indication-specific dosing for gemcitabine, frequency-based adverse effects, comprehensive interactions, contraindications, pregnancy & lactation schedules, and cost ...

Gemcitabine - Cancer Research UK

Oct 1, 2024 · Gemcitabine is a type of chemotherapy drug. It is a treatment for a number of different cancers. Read about the side effects and other important information.

Gemcitabine (Gemzar, Infugem): Uses, Side Effects, Interactions ... - WebMD

Jan 7, 2025 · Find patient medical information for Gemcitabine (Gemzar, Infugem) on WebMD including its uses, side effects and safety, interactions, pictures, warnings, and user ratings

Gemcitabine - Macmillan Cancer Support

Gemcitabine is used to treat different cancers including bladder, breast, pancreas, ovary and non-small-cell lung cancer (NSCLC).

gemcitabine - Cancer Care Ontario

For treating certain types of cancers such as bladder, pancreas, lung, breast and other types of cancer.

Gemcitabine Uses, Side Effects & Warnings - Drugs.com

Aug 14, 2023 · Gemcitabine is used to treat cancers of the pancreas, lung, ovary, and breast. Gemcitabine is sometimes given with other cancer medicines, or when other cancer ...

Gemcitabine - Wikipedia

Gemcitabine, sold under the brand name Gemzar, among others, [1] is a chemotherapy medication used to treat cancers. [3] It is used to treat testicular cancer, [4] breast cancer, ...

DRUG NAME: Gemcitabine - BC Cancer

The cytotoxic effects of gemcitabine are exerted through incorporation of dFdCTP into DNA with the assistance of dFdCDP, resulting in inhibition of DNA synthesis and induction of ...

Gemcitabine Chemotherapy: Uses, Delivery, Side Effects, and More

Nov 10, 2022 · Gemcitabine chemotherapy is used for advanced cancers of the breast, lungs, ovaries, and pancreas. Learn about delivery, side effects, effectiveness, and more.

Gemcitabine (intravenous route) - Side effects & uses

Mar 1, 2025 · Gemcitabine injection is used together with other medicines (eg, carboplatin) to treat patients with advanced ovarian cancer that has come back at least 6 months after ...

Gemcitabine dosing, indications, interactions, adverse effects, and ...

Medscape - Indication-specific dosing for gemcitabine, frequency-based adverse effects, comprehensive interactions, contraindications, pregnancy & lactation schedules, and cost ...

Gemcitabine - Cancer Research UK

Oct 1, 2024 · Gemcitabine is a type of chemotherapy drug. It is a treatment for a number of different cancers. Read about the side effects and other important information.

[Gemcitabine \(Gemzar, Infugem\): Uses, Side Effects, Interactions ... - WebMD](#)

Jan 7, 2025 · Find patient medical information for Gemcitabine (Gemzar, Infugem) on WebMD including its uses, side effects and safety, interactions, pictures, warnings, and user ratings

Gemcitabine - Macmillan Cancer Support

Gemcitabine is used to treat different cancers including bladder, breast, pancreas, ovary and non-small-cell lung cancer (NSCLC).

Discover essential gemcitabine bladder instillation patient education tips to enhance your treatment experience. Learn more about the process and benefits today!

[Back to Home](#)