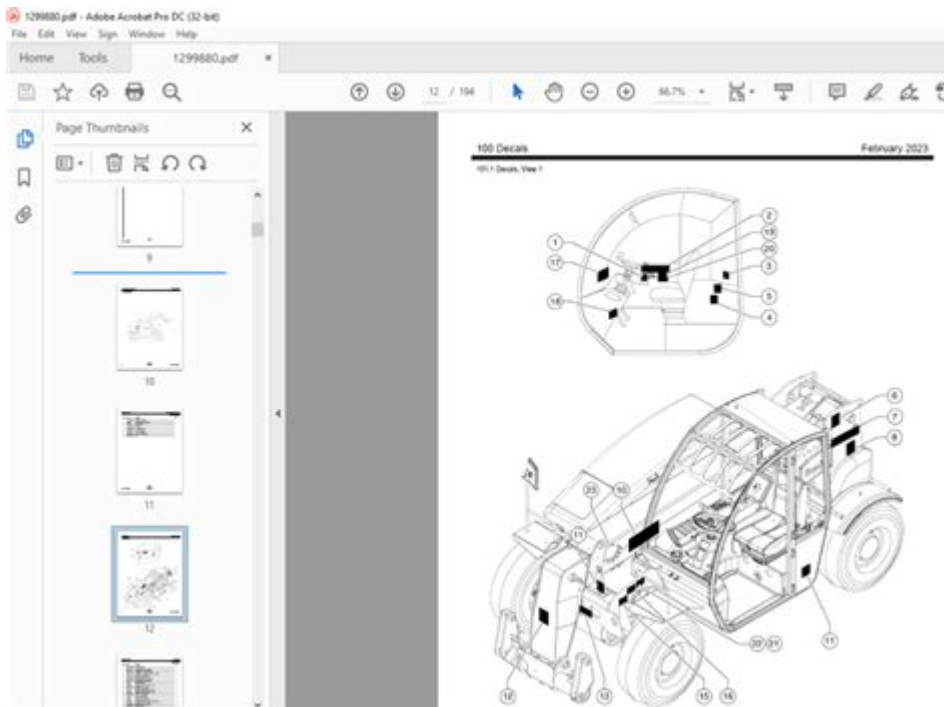


Genie Gth 5519 Parts Manual



Genie GTH 5519 Parts Manual is an essential resource for anyone involved in the operation, maintenance, or repair of the Genie GTH 5519 telehandler. This manual provides detailed information about the various components of the machine, essential for ensuring optimal performance and longevity. In this article, we will explore the importance of the parts manual, the key components of the Genie GTH 5519, and how to effectively utilize the manual for maintenance and repairs.

Understanding the Genie GTH 5519 Telehandler

The Genie GTH 5519 is a versatile telehandler designed for heavy lifting and material handling tasks in construction, agriculture, and industrial applications. With its powerful engine and robust design, the GTH 5519 is capable of lifting loads up to 5,500 pounds and reaching heights of 19 feet. Its compact size and maneuverability make it suitable for working in tight spaces.

Key Features of the Genie GTH 5519

- **Lift Capacity:** The GTH 5519 can lift substantial loads, making it ideal for various applications.
- **Maximum Height:** The telehandler can extend its boom to a height of 19 feet, enhancing its versatility.

- **Compact Design:** Its smaller footprint allows it to operate in confined areas, improving accessibility.
- **Durability:** Built with high-quality materials, the GTH 5519 is designed to withstand tough working conditions.

The Importance of the Parts Manual

A parts manual is a critical tool for operators and maintenance personnel. The Genie GTH 5519 Parts Manual serves several purposes:

1. **Identification of Components:** The manual provides a comprehensive list of all parts, making it easier to identify specific components and their functions.
2. **Maintenance Guidance:** It offers detailed instructions on maintenance procedures, helping to ensure that the telehandler operates efficiently and safely.
3. **Repair Instructions:** In the event of a malfunction, the manual provides step-by-step repair instructions, minimizing downtime and repair costs.
4. **Parts Ordering:** With a clear breakdown of parts, it aids in ordering the correct components for replacements or repairs.

Key Components of the Genie GTH 5519

The Genie GTH 5519 consists of various critical components that work together to ensure its effective operation. Below are some of the primary parts and systems highlighted in the parts manual:

1. Engine and Power Train

The engine powers the telehandler and is crucial for its performance. Key points include:

- **Engine Specifications:** Information about the engine size, type, and horsepower rating.
- **Fuel System:** Details on fuel filters, injectors, and the fuel tank.
- **Transmission:** Insights into the transmission system that drives the wheels and controls movement.

2. Hydraulic System

The hydraulic system is responsible for lifting and maneuvering the boom. Important elements include:

- Hydraulic Pump: Specifications and maintenance tips for the pump that powers the hydraulic system.
- Cylinders: Details on the lift and tilt cylinders responsible for boom operations.
- Fluid Specifications: Recommendations for hydraulic fluids and maintenance schedules.

3. Electrical System

The electrical system controls various functions of the telehandler. Key components include:

- Wiring Diagrams: Visual guides to understand the electrical layout of the machine.
- Battery Specifications: Information on battery maintenance and specifications.
- Control Panel: Insights into the control panel functions and troubleshooting tips.

4. Frame and Chassis

The frame and chassis provide the structure and stability of the telehandler. Key areas to focus on include:

- Frame Components: A breakdown of the frame parts, including the boom and stabilizers.
- Safety Features: Information on safety mechanisms and features integrated into the design.

5. Attachments

The Genie GTH 5519 can accommodate various attachments for different tasks. The manual includes:

- Compatible Attachments: A list of attachments that can be used with the telehandler, such as forks, buckets, and lifts.
- Installation Guidelines: Instructions for safely attaching and detaching equipment.

Utilizing the Parts Manual Effectively

To make the most of the Genie GTH 5519 Parts Manual, consider the following tips:

1. Familiarize Yourself with the Manual

Take the time to read through the manual thoroughly. Understanding the layout and structure will help you locate information quickly when needed.

2. Regular Maintenance Checks

Use the manual to establish a routine maintenance schedule. Regular checks of key components will help identify issues before they become significant problems.

3. Follow Repair Procedures Closely

When performing repairs, follow the step-by-step instructions provided in the manual to ensure accuracy and safety. This will minimize the risk of errors that could lead to further issues.

4. Keep Updated with Revisions

Manufacturers often update parts manuals to reflect new components or procedures. Ensure you have the latest version of the Genie GTH 5519 Parts Manual for the most accurate information.

5. Store the Manual Safely

Keep the parts manual in a designated location that is easily accessible. Consider using a digital format for convenience and to protect it from wear and tear.

Conclusion

The Genie GTH 5519 Parts Manual is an indispensable resource for anyone involved in the operation and maintenance of this robust telehandler. By understanding its key components and utilizing the manual effectively, operators can ensure the machine remains in top working condition, reducing downtime and extending its lifespan. Regular reference to the manual will facilitate efficient maintenance practices and empower users to tackle repairs with confidence. Whether you are a seasoned operator or new to the equipment, the parts manual is your go-to guide for keeping the Genie GTH 5519 running smoothly.

Frequently Asked Questions

What is the purpose of the Genie GTH 5519 parts manual?

The Genie GTH 5519 parts manual provides detailed information on the components and parts of the Genie GTH 5519 telehandler, including part numbers, diagrams, and maintenance instructions to assist in repairs and servicing.

Where can I find the Genie GTH 5519 parts manual?

The Genie GTH 5519 parts manual can typically be found on the official Genie website under the support or resources section, or it may be available through authorized Genie dealers.

Is the Genie GTH 5519 parts manual available in digital format?

Yes, the Genie GTH 5519 parts manual is often available in PDF format for easy access and download, allowing users to view it on various devices.

What types of diagrams are included in the Genie GTH 5519 parts manual?

The manual includes exploded view diagrams, schematics, and assembly drawings that illustrate the components and their relationships within the Genie GTH 5519 telehandler.

How often should I refer to the Genie GTH 5519 parts manual for maintenance?

It is advisable to refer to the Genie GTH 5519 parts manual regularly, especially during routine maintenance, repairs, or when diagnosing issues with the machine.

Can I order parts for the Genie GTH 5519 directly from the manual?

While the manual provides part numbers, you typically need to order parts through a Genie dealer or authorized parts distributor, using the part numbers listed in the manual.

What should I do if I can't find the Genie GTH 5519 parts manual?

If you can't find the Genie GTH 5519 parts manual, you can contact Genie customer support or your local dealer for assistance in obtaining a copy.

Are there any updates or revisions to the Genie GTH 5519 parts manual?

Yes, manufacturers sometimes release updates or revisions to parts manuals to include new parts or reflect design changes. It's important to check for the latest version on the official Genie website.

Find other PDF article:

<https://soc.up.edu.ph/24-mark/Book?docid=MGd97-9662&title=game-of-thrones-history-and-lore.pdf>

Genie Gth 5519 Parts Manual

Download the new Google Meet app - Computer - Google Meet ...

Google Duo and Google Meet have been combined into a new Meet app for video calling and meetings. You can access your meetings in the new Meet app

Download and install Google Chrome

How to install Chrome Important: Before you download, you can check if Chrome supports your operating system and other system requirements.

[○○○○○○ YouTube](#) -
 [○○○○○○ Android](#) -
 [○○○○○○ YouTube](#)

[illegible]

Download & use Google Translate

You can translate text, handwriting, photos, and speech in over 200 languages with the Google Translate app. You can also use Translate on the web.

[Change or reset your password - Computer - Gmail Help](#)

If you change or reset your password, you'll be signed out everywhere except: Devices you use to verify that it's you when you sign in. Some devices with third-party apps that you've given ...

Télécharger et installer Google Chrome

Installer Chrome Important : Avant de télécharger Chrome, vous pouvez vérifier s'il est compatible avec votre système d'exploitation et les autres configurations système requises.

Mendownload dan menginstal Google Chrome

Cara menginstal Chrome Penting: Sebelum mendownload, Anda dapat memeriksa apakah Chrome mendukung sistem operasi Anda dan persyaratan sistem lainnya.

Comment modifier ou réinitialiser le mot de passe de mon compte ...

Vous pouvez modifier votre mot de passe pour des raisons de sécurité, ou le réinitialiser si vous l'avez oublié. Le mot de passe de votre compte Google vous permet d'accéder à de nombreux ...

මෙමගින් මා විසින් Gmail ආවේණික ලෙස ප්‍රතික්ෂේප කළ බැවින් මා විසින් ප්‍රතික්ෂේප කළ බැවින් :මෙම
 අදහස් සඳහා මාට මා විසින් මා විසින් මා විසින් මා විසින් මා විසින් .මෙම අදහස් සඳහා.

Logowanie się w Gmailu Wskazówka: jeśli logujesz się z komputera publicznego, pamiętaj, aby przed odejściem od niego wylogować się z konta. Dowiedz się, jak logować się na urządzeniu, ...

Google Duo and Google Meet have been combined into a new Meet app for video calling and meetings. You can access your meetings in the new Meet app

How to install Chrome Important: Before you download, you can check if Chrome supports your operating system and other system requirements.

[illegible]

You can translate text, handwriting, photos, and speech in over 200 languages with the Google Translate app. You can also use Translate on the web.

If you change or reset your password, you'll be signed out everywhere except: Devices you use to verify that it's you when you sign in. Some devices with third-party apps that you've given account access. Learn how to remove an app's access to your account. Helpful home devices that you've given account access. Learn how to unlink these devices from your Google Account.

Installer Chrome Important : Avant de télécharger Chrome, vous pouvez vérifier s'il est compatible avec votre système d'exploitation et les autres configurations système requises.

Cara menginstal Chrome Penting: Sebelum mendownload, Anda dapat memeriksa apakah Chrome mendukung sistem operasi Anda dan persyaratan sistem lainnya.

Vous pouvez modifier votre mot de passe pour des raisons de sécurité, ou le réinitialiser si vous l'avez oublié. Le mot de passe de votre compte Google vous permet d'accéder à de nombreux produits Goo

000000 00 00000 Gmail 0000000 000 000000 000000 0000000 0000 00000 00 00000 000000000 00 000 :0000
 0000 0000 0000 000 00 000000 00 0000000 00 00000 00 0000 0000 00 .0000 0000 000000 00.

Logowanie się w Gmailu Wskazówka: jeśli logujesz się z komputera publicznego, pamiętaj, aby przed odejściem od niego wylogować się z konta. Dowiedz się, jak logować się na urządzeniu, które nie

należy do Ciebie.

Find the complete Genie GTH 5519 parts manual to help you maintain your equipment effectively.
Discover how to access essential resources today!

[Back to Home](#)