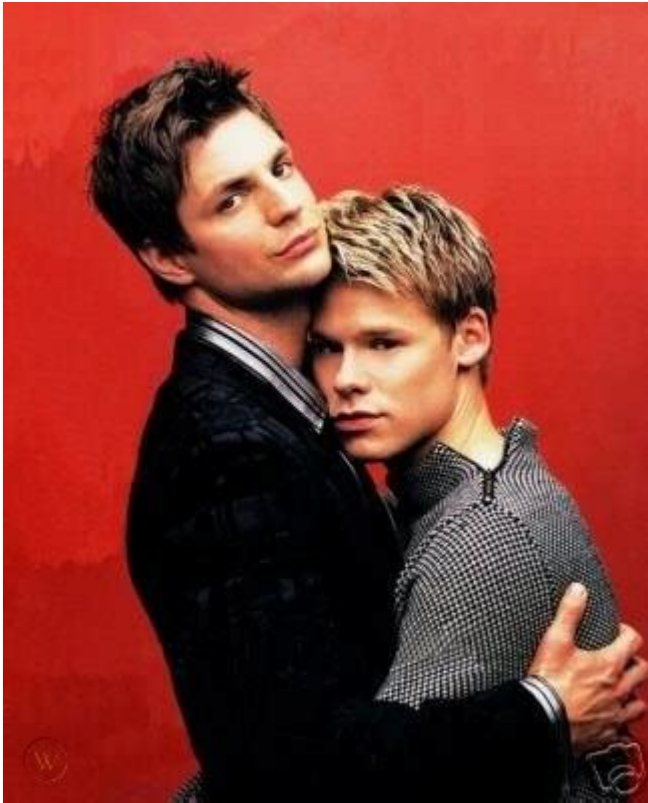


Gale Harold Randy Harrison Relationship



Gale Harold and Randy Harrison Relationship

The relationship between actors Gale Harold and Randy Harrison has intrigued fans of the groundbreaking television series "Queer as Folk," where they portrayed Brian Kinney and Justin Taylor, respectively. Their on-screen chemistry was palpable, leading to a strong fan following that often speculated about the nature of their off-screen dynamic. Over the years, the two actors have remained close friends, and their relationship has been a topic of interest within the LGBTQ+ community and beyond. This article explores their journey, the impact of their roles on their lives, and the ways in which they have supported each other throughout their careers.

Background of Gale Harold and Randy Harrison

Gale Harold, born on July 10, 1969, in Decatur, Georgia, is an accomplished actor and director. He rose to fame with his role as Brian Kinney in "Queer as Folk," a series that explored the lives of a group of gay friends in Pittsburgh, Pennsylvania. The show, which aired from 2000 to 2005, was notable for its candid portrayal of LGBTQ+ issues, including relationships, sexuality, and the struggles faced by the community.

Randy Harrison, born on November 2, 1977, in Nashua, New Hampshire, is also known for his role as Justin Taylor in the same series. Harrison's character

was a young artist navigating his sexuality and relationships, particularly with Brian Kinney. The dynamic between the two characters became a central focus of the show, and their relationship resonated with many viewers.

Their On-Screen Chemistry

The chemistry between Harold and Harrison was undeniable, and it played a significant role in the show's success. Their characters represented complex portrayals of love, desire, and emotional connection, which captured the hearts of audiences. Several factors contributed to their on-screen chemistry:

1. **Shared Commitment to Authenticity:** Both actors approached their roles with dedication and a desire to portray their characters authentically. This commitment helped foster a genuine connection that translated well on screen.
2. **Character Development:** The evolution of Brian and Justin's relationship from a casual encounter to a deep emotional bond allowed the actors to explore various dimensions of love and intimacy.
3. **Supportive Environment:** The creative team behind "Queer as Folk" provided a safe and inclusive environment for the actors to express themselves freely, which contributed to their performances.

Behind the Scenes: Friendship and Support

While their characters had a tumultuous relationship filled with ups and downs, Harold and Harrison's off-screen friendship has been a source of strength for both actors. They have often spoken about the bond they formed during their time on the show and how it has continued to flourish in the years since.

Mutual Respect and Admiration

Gale and Randy have consistently expressed mutual respect for each other's talents. Their admiration extends beyond their performances on "Queer as Folk." Both actors have continued to work in the entertainment industry, pursuing diverse roles and creative projects. Gale Harold has taken on various roles in television and film, while Randy Harrison has also ventured into theater and independent films. Their individual successes have only solidified their friendship further.

Supporting Each Other's Careers

The two actors have been known to support each other in their respective projects. Whether attending each other's events or promoting their work on social media, their camaraderie is evident. This support is essential in an industry that can often be competitive and challenging. Some examples of their support include:

- **Public Appearances:** Gale and Randy have made several public appearances together, showcasing their bond and reinforcing their friendship. These appearances often draw attention from fans and media alike, highlighting their enduring connection.
- **Social Media Interaction:** Both actors have used platforms like Twitter and Instagram to share moments from their lives and careers. They frequently interact, showing their support for each other's endeavors.

The Impact of "Queer as Folk" on Their Lives

The success of "Queer as Folk" significantly impacted both Gale Harold and Randy Harrison's personal and professional lives. The show not only provided them with fame but also opened doors to important conversations about LGBTQ+ representation in media.

Breaking Stereotypes

The series was groundbreaking for its time, challenging stereotypes and providing a platform for LGBTQ+ stories. Through their roles, Harold and Harrison contributed to a more nuanced portrayal of gay relationships, showcasing the complexities and challenges faced by individuals in the LGBTQ+ community. Their performances helped normalize discussions around sexuality and love, influencing audiences globally.

Personal Growth and Identity

Both actors have spoken about how their roles in "Queer as Folk" allowed them to explore their own identities and experiences. For Gale Harold, portraying Brian Kinney provided an opportunity to delve into themes of masculinity and vulnerability. For Randy Harrison, playing Justin Taylor allowed him to explore the journey of self-discovery and acceptance.

Legacy and Continuing Influence

As time has passed, the legacy of "Queer as Folk" continues to resonate, and so does the friendship between Gale Harold and Randy Harrison. Their relationship serves as an inspiration to many, highlighting the importance of support and understanding among peers.

Influence on Future Generations

The impact of their performances and the show itself can still be felt in contemporary media. New LGBTQ+ shows and films often cite "Queer as Folk" as an inspiration, and the authentic representation of gay relationships has paved the way for more diverse stories in the entertainment industry.

Advocacy and Representation

Both Harold and Harrison have been advocates for LGBTQ+ rights and representation. Through interviews and public appearances, they have continued to raise awareness about important issues affecting the LGBTQ+ community, including discrimination, mental health, and the need for authentic representation in media.

Conclusion

The relationship between Gale Harold and Randy Harrison, forged through their iconic roles in "Queer as Folk," has evolved into a lasting friendship marked by mutual respect and support. Their on-screen chemistry not only captivated audiences but also contributed to a broader dialogue about LGBTQ+ issues. As they continue their individual journeys in the entertainment industry, their bond remains a testament to the power of friendship and the importance of representation in media. Their legacy serves as an enduring reminder of the impact that authentic storytelling can have on society, inspiring future generations to embrace love, acceptance, and understanding.

Frequently Asked Questions

What is the nature of the relationship between Gale Harold and Randy Harrison?

Gale Harold and Randy Harrison are known for their on-screen relationship as Brian Kinney and Justin Taylor in the series 'Queer as Folk.' While they

share a strong professional bond, their personal relationship has been described as friendly and supportive.

Have Gale Harold and Randy Harrison ever confirmed a romantic relationship?

No, Gale Harold and Randy Harrison have not confirmed any romantic relationship outside of their roles in 'Queer as Folk.' They maintain that their connection is primarily rooted in their work together.

How has the fanbase reacted to the relationship between Gale Harold and Randy Harrison?

The fanbase has shown immense support for the chemistry between Gale Harold and Randy Harrison, often celebrating their characters' relationship and speculating about their off-screen friendship.

What impact did the relationship between Gale Harold and Randy Harrison have on LGBTQ representation?

Their relationship on 'Queer as Folk' played a significant role in LGBTQ representation on television, showcasing complex characters and relationships that resonated with many viewers, thereby contributing to broader acceptance and visibility.

Are Gale Harold and Randy Harrison still in touch after 'Queer as Folk'?

Yes, both actors have expressed that they remain in touch and supportive of each other's careers, often showing appreciation for their time working together on 'Queer as Folk.'

Find other PDF article:

<https://soc.up.edu.ph/35-bold/pdf?trackid=hwP72-3454&title=kanye-west-secret-society.pdf>

Gale Harold Randy Harrison Relationship

Scholarly Resources for Learning and Research | Gale

Are you a student or a researcher? Gale offers thousands of academic tools like databases, eBooks, primary source content, eLearning solutions, and more. See what's available at your library!

Gale Online Databases for Learners and Educators - Gale

GALE DATABASES It's important that researchers can access complete, credible, and up-to-date content. We offer powerful research technology to provide vetted sources designed to support

researchers when and where they need it.

Academic Databases, Journals, & Resources | Gale

Gale is committed to providing researchers and students with the best academic resources available. Click to explore our research and education resources.

Databases for Research & Education | Gale

Are you a student or a researcher? Gale offers thousands of academic tools like databases, eBooks, primary source content, eLearning solutions, and more. See what's available at your library!

Education, Learning and Research Resources Online - Gale

Gale is a global leader in education, learning, and research resources online. We have a vast digital archive of Primary Sources, research databases, reference books (both eBook and ...

About Gale

Gale, part of Cengage Group, partners with librarians and educators around the world to connect learners to essential content through user-friendly technology that enhances experiences and improves learning outcomes.

Gale Academic OneFile

Gale's premier periodical resource, Gale Academic OneFile, provides millions of articles from over 17,000 scholarly journals and other authoritative sources—including thousands of podcasts and transcripts from NPR and CNN as well as videos from BBC Worldwide Learning.

Gale Primary Sources

A list of recent and upcoming improvements for the Gale Primary Sources platform, making it easy to stay up to date with new functionality and tools you can use with our archives.

Gale eBooks (formerly Gale Virtual Reference Library)

The Gale eBooks platform provides comprehensive support from many of today's top publishers, optimized for search, discovery, and integration across your library's educational programs.

Library Information Center - Gale

Please enter your information below. Copyright © 2025. All rights reserved.

Scholarly Resources for Learning and Research | Gale

Are you a student or a researcher? Gale offers thousands of academic tools like databases, eBooks, primary source content, eLearning solutions, and more. See what's available at your ...

Gale Online Databases for Learners and Educators - Gale

GALE DATABASES It's important that researchers can access complete, credible, and up-to-date content. We offer powerful research technology to provide vetted sources designed to support ...

Academic Databases, Journals, & Resources | Gale

Gale is committed to providing researchers and students with the best academic resources available. Click to explore our research and education resources.

Databases for Research & Education | Gale

Are you a student or a researcher? Gale offers thousands of academic tools like databases, eBooks, primary source content, eLearning solutions, and more. See what's available at your ...

Education, Learning and Research Resources Online - Gale

Gale is a global leader in education, learning, and research resources online. We have a vast digital archive of Primary Sources, research databases, reference books (both eBook and ...

About Gale

Gale, part of Cengage Group, partners with librarians and educators around the world to connect learners to essential content through user-friendly technology that enhances experiences and ...

Gale Academic OneFile

Gale's premier periodical resource, Gale Academic OneFile, provides millions of articles from over 17,000 scholarly journals and other authoritative sources—including thousands of podcasts ...

Gale Primary Sources

A list of recent and upcoming improvements for the Gale Primary Sources platform, making it easy to stay up to date with new functionality and tools you can use with our archives.

Gale eBooks (formerly Gale Virtual Reference Library)

The Gale eBooks platform provides comprehensive support from many of today's top publishers, optimized for search, discovery, and integration across your library's educational programs.

Library Information Center - Gale

Please enter your information below. Copyright © 2025. All rights reserved.

Explore the intriguing Gale Harold and Randy Harrison relationship. Discover how their bond shaped their careers and impacted fans. Learn more about their journey!

[Back to Home](#)