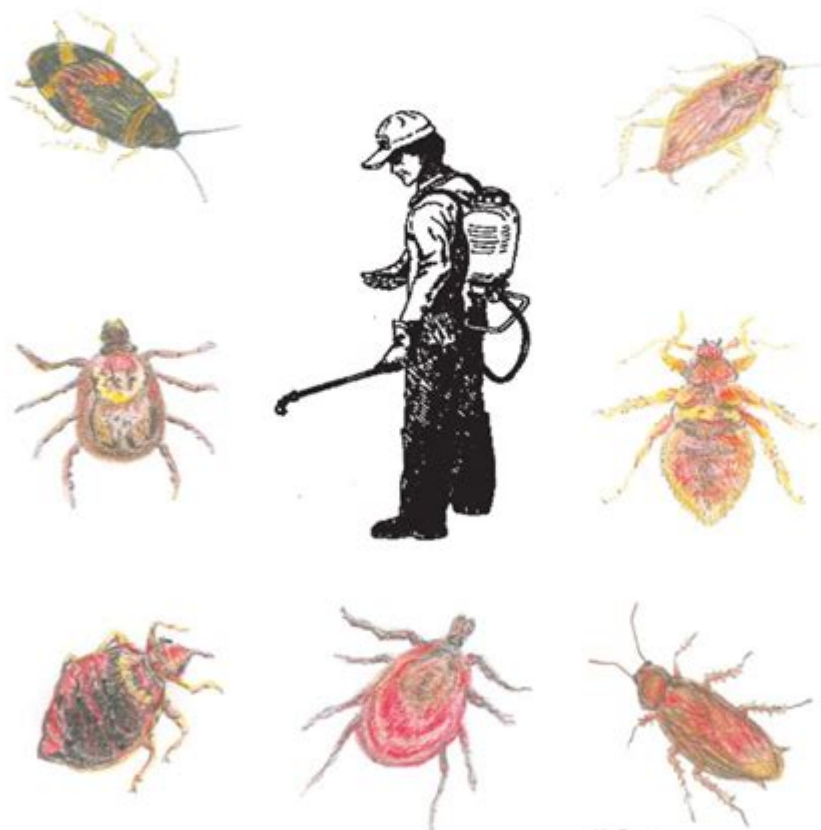


# General Pest Control Study Guide

## GENERAL PEST CONTROL

CATEGORY 10A

A Study Guide for Commercial Applicators



July 2009 - Ohio Department of Agriculture - Pesticide and Fertilizer Regulation - Certification and Training

### General Pest Control Study Guide

Pest control is an essential aspect of maintaining a healthy environment, whether at home, in agriculture, or in commercial settings. Understanding the principles and practices of pest control is crucial for anyone involved in managing pest populations. This study guide aims to provide a comprehensive overview of pest control, covering various methods, pest identification, safety precautions, and the importance of integrated pest management (IPM).

## Understanding Pests

# What Are Pests?

Pests are organisms that cause harm to human interests, including plants, animals, and structures. They can be classified into various categories, including:

- Insects: Ants, termites, cockroaches, and flies
- Rodents: Mice, rats, and squirrels
- Weeds: Unwanted plants that compete with crops
- Pathogens: Fungi, bacteria, and viruses that can affect plants and animals

## Identifying Pests

Proper identification is the first step in effective pest control. To identify a pest, consider the following:

1. Physical Characteristics: Size, shape, color, and distinguishing features.
2. Behavior: Feeding habits, nesting preferences, and activity times.
3. Damage Patterns: Signs of infestation, such as droppings, gnaw marks, and damaged plants.

A pest identification guide can be a valuable resource for recognizing various pests and their potential impacts.

## Pest Control Methods

Pest control methods can be broadly classified into three categories: cultural, mechanical, and chemical.

### Cultural Control

Cultural control involves modifying practices to reduce pest populations. Some effective cultural control methods include:

- Crop Rotation: Changing the types of crops grown in a specific area to disrupt pest life cycles.
- Sanitation: Keeping areas clean to eliminate breeding grounds for pests.
- Timing of Planting: Planting crops at times that minimize exposure to pests.

### Mechanical Control

Mechanical control methods use physical means to remove or block pests. Examples include:

- Traps: Using sticky traps for insects or snap traps for rodents.
- Barriers: Installing screens, row covers, or fencing to prevent pests from entering specific areas.
- Handpicking: Manually removing pests from plants or structures.

# Chemical Control

Chemical control involves the use of pesticides to manage pest populations. When opting for chemical methods, consider the following:

- Types of Pesticides:
  - Insecticides: Target insects specifically.
  - Herbicides: Control unwanted plants.
  - Rodenticides: Kill rodents.
- Application Methods:
  - Sprays: For immediate control of pests on surfaces.
  - Granules: Often used for soil application.
  - Baits: Attract pests to a toxic substance.
- Safety Precautions: Always read labels, wear protective gear, and ensure proper ventilation during application.

## Integrated Pest Management (IPM)

### What is IPM?

Integrated Pest Management (IPM) is a holistic approach that combines multiple pest control strategies to minimize the use of harmful chemicals while effectively managing pest populations. IPM emphasizes understanding pest life cycles, monitoring populations, and using a combination of cultural, mechanical, biological, and chemical controls.

### Components of IPM

1. Monitoring: Regularly inspect areas for signs of pests and assess their populations.
2. Threshold Levels: Determine action thresholds, which indicate when pest populations require control measures.
3. Control Strategies: Implement a mix of control methods tailored to the specific pest and environment.
4. Evaluation: Assess the effectiveness of the control measures and make necessary adjustments.

## Pest Control Safety Measures

Safety is paramount when dealing with pest control. Here are some essential safety measures to follow:

- Read Labels: Always read and follow pesticide labels for specific usage instructions, safety

precautions, and first aid measures.

- **Wear Protective Gear:** Use gloves, masks, goggles, and long sleeves to minimize exposure to chemicals.
- **Store Chemicals Safely:** Keep pesticides in their original containers, away from children and pets, in a cool, dry place.
- **Proper Disposal:** Dispose of unused or expired pesticides according to local regulations to prevent environmental contamination.

## **Regulations and Certifications**

### **Understanding Local Regulations**

Pest control is regulated at local, state, and federal levels. It is essential to understand the regulations that apply to your area, including:

- **Pesticide Registration:** Ensure that all pesticides used are registered and compliant with local laws.
- **Licensing:** Many states require pest control operators to obtain a license to apply certain pesticides, especially in commercial settings.

### **Certifications for Pest Control Professionals**

Various certifications can enhance the credibility and knowledge of pest control professionals. Some notable certifications include:

- **Certified Pest Control Operator (CPCO):** A general certification for pest control operators.
- **Entomology Certifications:** Specialized certifications focusing on insect identification and management.
- **IPM Certification:** Training and certification in integrated pest management practices.

## **Conclusion**

A general pest control study guide provides a foundation for understanding the various aspects of pest management. Whether employing cultural, mechanical, or chemical control methods, the goal is to manage pest populations effectively while minimizing risks to human health and the environment. By embracing integrated pest management principles and adhering to safety standards and regulations, individuals and professionals can achieve sustainable pest control solutions. Continuous education and training in pest identification and control techniques are essential for staying current in this ever-evolving field.

# Frequently Asked Questions

## What are the primary types of pests covered in a general pest control study guide?

A general pest control study guide typically covers insects (like ants, roaches, and termites), rodents (such as mice and rats), and other pests like birds and weeds.

## What is Integrated Pest Management (IPM)?

Integrated Pest Management (IPM) is a comprehensive approach to pest control that combines biological, cultural, physical, and chemical tools in a way that minimizes economic, health, and environmental risks.

## What safety precautions should be taken when applying pesticides?

Safety precautions include wearing personal protective equipment (PPE) such as gloves, masks, and goggles, ensuring good ventilation, and following label instructions carefully to prevent harm to humans and pets.

## How can pest identification enhance the effectiveness of pest control?

Accurate pest identification allows for targeted treatments, reducing the use of unnecessary chemicals and increasing the effectiveness of control measures by addressing the specific life cycle and behavior of the pest.

## What are some common signs of a pest infestation?

Common signs of a pest infestation include droppings, gnaw marks, nests, shed skin, and visible damage to structures or plants.

## Why is record-keeping important in pest control management?

Record-keeping is important as it helps track pest populations, monitor treatment effectiveness, and comply with regulations, ensuring a systematic approach to pest management.

Find other PDF article:

<https://soc.up.edu.ph/18-piece/files?dataid=upe14-3442&title=dna-and-rna-worksheet-answer-key.pdf>

# General Pest Control Study Guide

*common* □ *universal* □ *general* □ *usual* □ □ □ □ □ □ □ □ ...

```
common[] general[]
general [] ...
```

□□□□□□□□□□□□□□-□□□□□□□□□□□□□□

Jun 8, 2025 · 000000000000-00000000000000000000

https://graph.baidu.com/pcpage/index?tpl\_from ...

**Managing Director** **General Manager**

副總裁、董事、總經理  
VP ...

sci.....

99% The authors reported on a new rate equation model of CW Tm: YAP Laser which considers re ...

GP HQ

1 GP (General Purpose) 40GP 2 HQ (High Cube) 40HQ  
Ocean Freight ...

GP-LP-PE-VC-FOF -

[illegible]

Command &amp; Conquer: General ...

Command & Conquer 2 (Command & Conquer: General) 6

winrar□□□□ - □□□□

Dec 10, 2023 · winrar1WinRAR“Options”2  
“Settings”WinRAR ...

**GM-VP-FVP-CIO- -**

```
GM General Manager
GM VP
...

```

**sci** -

Dec 2, 2023 · submission further. Submissions sent for peer-review are selected on the basis of discipline, novelty and general significance, in addition to the usual criteria for publication in ...

**common** □ **universal** □ **general** □ **usual** □ □ □ □ □ □ □ □ □ □ ...

```
common[ ] general[ ]
general [ ] ...
```

□□□□□□□□□□□□□□-□□□□□□□□□□□□□□

Jun 8, 2025 · -

https://graph.baidu.com/pcpage/index?tpl from ...

**Managing Director** **General Manager**

vice president, director, managing director  
VP ...

**sci** ...

99% The authors reported on a new rate equation model of CW Tm: YAP Laser which considers re ...

**GP** **HQ**

1 GP (General Purpose) 40 GP 40 2 HQ (High Cube) 40 HQ 40  
Ocean Freight ...

**GP** **LP** **PE** **VC** **FOF** -

...

(Command & Conquer: General) ...

Command & Conquer 2 (Command & Conquer: General) 6

*winrar* -

Dec 10, 2023 · winrar 1 WinRAR "Options" 2  
"Settings" WinRAR ...

**GM** **VP** **FVP** **CIO** -

**GM** General Manager **GM** **VP** ...

**sci** -

Dec 2, 2023 · submission further. Submissions sent for peer-review are selected on the basis of discipline, novelty and general significance, in addition to the usual criteria for publication in ...

"Master pest control with our comprehensive general pest control study guide. Learn essential techniques and tips for effective pest management. Discover how!"

[Back to Home](#)