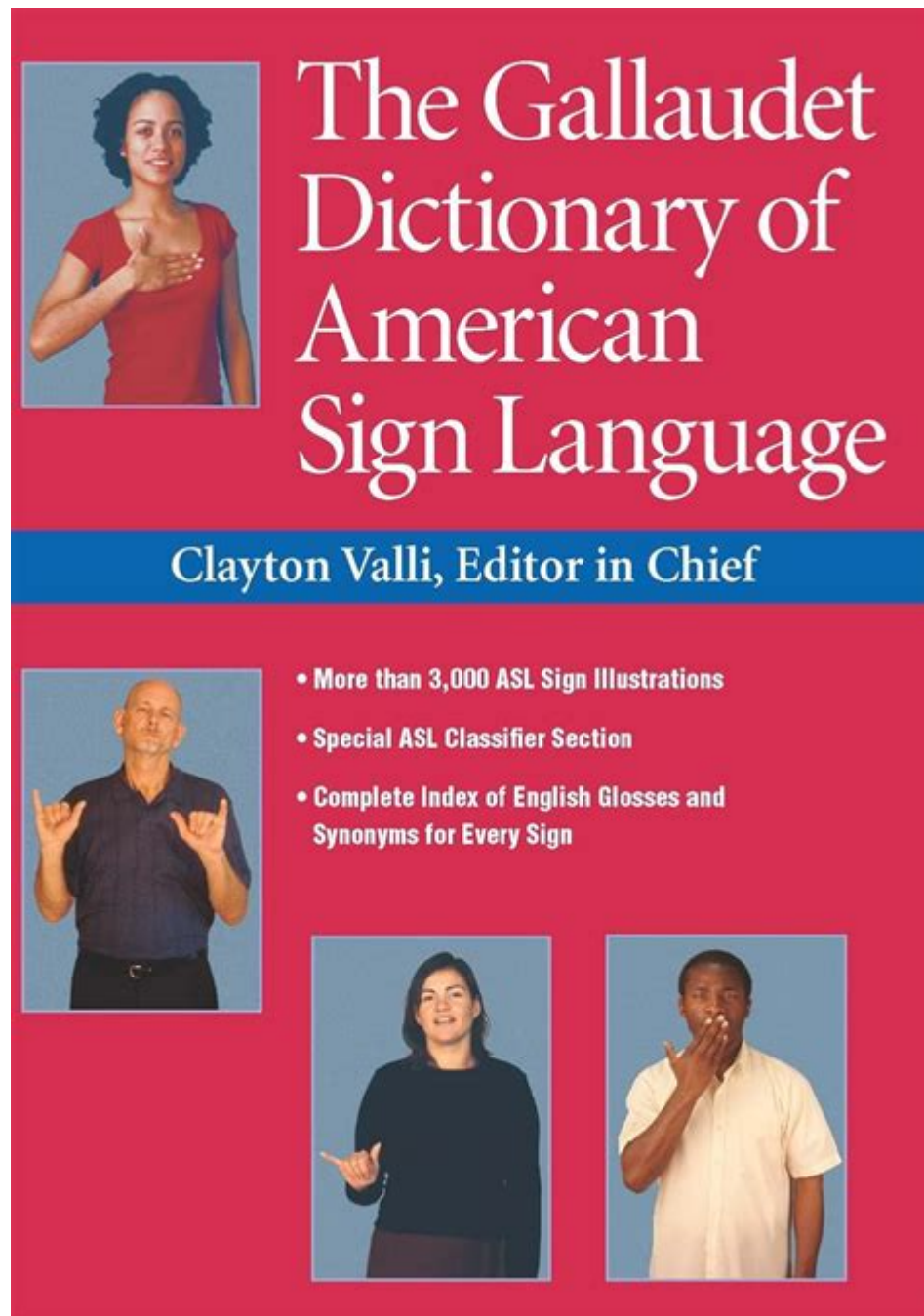


Gallaudet Dictionary Of American Sign Language



Gallaudet Dictionary of American Sign Language is a pivotal resource in the study and understanding of American Sign Language (ASL). Compiled and published by Gallaudet University, this dictionary serves not only as a comprehensive guide for sign language users but also as a vital educational tool for those who wish to learn ASL. With its extensive collection of signs, illustrations, and linguistic notes, the Gallaudet Dictionary stands out as an authoritative reference for educators, students, interpreters, and the Deaf community.

History and Development of the Dictionary

The Gallaudet Dictionary of American Sign Language has its roots in the efforts of Gallaudet University, the world's only university designed specifically for Deaf and hard-of-hearing students. Founded in 1864, Gallaudet has been at the forefront of Deaf education and advocacy. The dictionary was first published in 2002 and has since undergone various revisions to reflect the evolving nature of ASL.

Contributors and Team

The dictionary was created by a team of linguists, educators, and members of the Deaf community. Key contributors include:

- Dr. Clayton Valli: A prominent figure in ASL linguistics, Dr. Valli's research laid the groundwork for understanding the structure and grammar of ASL.
- Dr. Ceil Lucas: An expert in sociolinguistics and ASL, Dr. Lucas helped in refining the glossary and ensuring its relevance to contemporary users.
- Dr. Barbara Shaffer: A scholar in Deaf education and language acquisition, Dr. Shaffer contributed insights into how Deaf children learn sign language.

The collaboration of these experts ensured that the dictionary was not only linguistically accurate but also culturally sensitive and inclusive.

Structure and Features of the Dictionary

The Gallaudet Dictionary of American Sign Language is designed to be user-friendly while providing comprehensive information about each sign.

Sign Entries

Each entry in the dictionary typically includes the following components:

1. Sign Illustration: A visual representation of the sign performed by a model. This is crucial for learners, as ASL is a visual language.
2. Gloss: A written description of the sign in English, providing the meaning or translation.
3. Phonetic Notation: An indication of the sign's handshape, movement, and location to help users understand how to produce the sign correctly.
4. Example Sentences: Sample sentences that demonstrate the sign in context, helping users learn how to incorporate it into conversation.
5. Cultural Notes: Additional information that provides context about the sign's usage, regional variations, or cultural significance.

Visual and Multimedia Elements

The dictionary also incorporates various visual and multimedia elements:

- Photographs and Illustrations: High-quality images showcase different aspects of signs, including handshapes and movements.
- Videos: Many versions of the dictionary, particularly online platforms, feature video demonstrations of signs, allowing users to see and hear the signs in action.

The Importance of the Gallaudet Dictionary in ASL Education

The Gallaudet Dictionary of American Sign Language plays a crucial role in the education of both Deaf and hearing individuals. It serves various purposes:

For Deaf Students

- Language Development: The dictionary aids Deaf students in expanding their vocabulary and understanding the nuances of ASL.
- Cultural Identity: By learning from a resource developed by and for the Deaf community, students gain a sense of identity and connection to their culture.

For Hearing Learners

- Language Acquisition: Hearing individuals learning ASL can use the dictionary as a foundational tool for vocabulary building and grammar understanding.
- Cultural Sensitivity: The dictionary emphasizes the importance of cultural context, helping hearing learners appreciate the Deaf community's history and values.

Challenges and Limitations

While the Gallaudet Dictionary is an invaluable resource, it is not without challenges:

Dynamic Nature of ASL

- **Evolving Language:** ASL, like any living language, is constantly evolving. New signs are created, and existing ones may change in meaning or usage over time. This dynamic nature can make it challenging to keep the dictionary up-to-date.

Regional Variations

- **Dialectical Differences:** ASL has regional dialects, and some signs may vary significantly from one area to another. While the dictionary aims to be comprehensive, it may not encompass all local variations.

Accessibility Issues

- **Resource Availability:** Some users may find it difficult to access the dictionary, particularly in areas with limited educational resources or for those who may not have the financial means to purchase it.

Future of the Gallaudet Dictionary

The future of the Gallaudet Dictionary of American Sign Language promises continued growth and adaptation.

Technological Integration

- **Online Platforms:** The increasing use of digital media and online platforms allows for more interactive features, such as user-generated content, forums, and mobile applications that make learning ASL more accessible.
- **Augmented Reality (AR):** Future editions may incorporate AR technology to provide immersive learning experiences, allowing users to interact with signs in real-world scenarios.

Community Involvement

- **Crowdsourcing Updates:** Engaging the Deaf community in the dictionary's updates can ensure that it remains relevant and reflective of current usage.
- **Workshops and Training:** Gallaudet University can host workshops for educators and interpreters to familiarize them with new entries and updates in the dictionary.

Conclusion

The Gallaudet Dictionary of American Sign Language is more than just a compilation of signs; it is a living document that reflects the culture, history, and evolution of ASL. Its commitment to linguistic accuracy, cultural sensitivity, and user accessibility makes it an essential resource for anyone interested in understanding or using American Sign Language. As ASL continues to evolve, so too will the Gallaudet Dictionary, ensuring that it remains a vital tool for education, communication, and cultural preservation within the Deaf community and beyond.

Frequently Asked Questions

What is the Gallaudet Dictionary of American Sign Language?

The Gallaudet Dictionary of American Sign Language is a comprehensive reference that provides definitions, illustrations, and usage examples of American Sign Language (ASL) signs, created by the Gallaudet University Press.

Who published the Gallaudet Dictionary of American Sign Language?

The dictionary was published by Gallaudet University Press, which is affiliated with Gallaudet University, the world's only university specifically designed for deaf and hard of hearing students.

What makes the Gallaudet Dictionary unique?

The Gallaudet Dictionary is unique because it not only includes signs but also offers cultural insights and context, making it an essential resource for learning ASL and understanding Deaf culture.

How many signs are included in the Gallaudet Dictionary of American Sign Language?

The Gallaudet Dictionary includes over 3,000 signs, making it one of the most comprehensive resources for ASL.

Is the Gallaudet Dictionary suitable for beginners?

Yes, the Gallaudet Dictionary is suitable for beginners as it provides clear illustrations and explanations of signs, along with usage examples to help learners understand how to use them in context.

Can the Gallaudet Dictionary be used for academic purposes?

Absolutely, the Gallaudet Dictionary is often used in academic settings for courses in ASL, Deaf studies, and linguistics, serving as a reliable reference for students and educators.

Is there an online version of the Gallaudet Dictionary?

As of now, there is no official online version of the Gallaudet Dictionary, but it's available in print and can be found at various libraries and bookstores.

What age group is the Gallaudet Dictionary aimed at?

The Gallaudet Dictionary is aimed at a wide range of age groups, from young children learning ASL to adults seeking to improve their signing skills.

How can the Gallaudet Dictionary help with learning ASL?

The Gallaudet Dictionary helps learners by providing visual representations of signs, detailed descriptions, and usage examples, which are crucial for mastering ASL.

Are there any supplementary materials for the Gallaudet Dictionary?

Yes, there are supplementary materials such as videos and workbooks that accompany the dictionary to enhance the learning experience and provide additional practice.

Find other PDF article:

<https://soc.up.edu.ph/08-print/Book?ID=OvP16-4240&title=augustine-confessions-henry-chadwick.pdf>

[Gallaudet Dictionary Of American Sign Language](#)

Gallaudet University | Changing the world with a bilingual way of ...

Discover Gallaudet University, the world's leading institution for the deaf and hard of hearing, offering innovative programs, a vibrant community, and rich culture.

Carter Bryant | Gallaudet University

Gallaudet University, the world's only four-year liberal arts university serving deaf and hard-of-hearing students, serves as the educational, social, and political engine of Deaf America.

Schools | Academics - Gallaudet University

Discover Gallaudet University's diverse academic programs across various schools. Explore opportunities for growth, innovation, and excellence in education.

DIVE | Gallaudet University

Instead of hosting SRP solely at Gallaudet, we are considering a bold move taking SRP beyond Gallaudet with Boston and DC as key destinations and the potential for other regional locations in the future.

Areas of Study - Gallaudet University

Explore Gallaudet University's diverse areas of study. Discover academic programs that empower students in the Deaf community and beyond. Find your path today!

Disability Services Center | Gallaudet University

Our purpose is to help qualified students with disabilities succeed through equal access to education, academic activities, and housing opportunities at Gallaudet University.

Bison Shop at Gallaudet University

I. King Jordan Student Academic Center #1020 800 Florida Avenue NE Washington, DC 20002
Phone 202-250-2249 Email Bison.Shop@gallaudet.edu Store Hours Semester Hours Monday - Thursday 9:30am - 6:30pm Friday: 9:30am - 5:00pm Saturday & Sunday: Closed Winter Break Hours Closed Summer Hours Monday - Friday: 10:00am - 4:00pm Saturday & Sunday ...

Certificate in Early Intervention Studies - Gallaudet University

Explore Gallaudet University's Certificate in Early Intervention Studies, focusing on collaboration and leadership for supporting deaf and hard-of-hearing infants and families.

Student Health Insurance Plan - Student Health Services

What kind of health insurance coverage do I need to have to be qualified for a waiver? You need to be covered under one of the following health insurance plans to qualify for a waiver: A comprehensive health insurance plan comparable to Gallaudet's plan

Your University | Gallaudet University

Discover Gallaudet University, a unique institution dedicated to deaf and hard of hearing students. Explore our vibrant community, academic programs, and campus life.

Gallaudet University | Changing the world with a bilingual way of ...

Discover Gallaudet University, the world's leading institution for the deaf and hard of hearing, offering innovative programs, a vibrant community, and rich culture.

Carter Bryant | Gallaudet University

Gallaudet University, the world's only four-year liberal arts university serving deaf and hard-of-hearing students, serves as the educational, social, and political engine of Deaf America.

Schools | Academics - Gallaudet University

Discover Gallaudet University's diverse academic programs across various schools. Explore opportunities for growth, innovation, and excellence in education.

DIVE | Gallaudet University

Instead of hosting SRP solely at Gallaudet, we are considering a bold move taking SRP beyond Gallaudet with Boston and DC as key destinations and the potential for other regional ...

Areas of Study - Gallaudet University

Explore Gallaudet University's diverse areas of study. Discover academic programs that empower students in the Deaf community and beyond. Find your path today!

Disability Services Center | Gallaudet University

Our purpose is to help qualified students with disabilities succeed through equal access to education, academic activities, and housing opportunities at Gallaudet University.

Bison Shop at Gallaudet University

I. King Jordan Student Academic Center #1020 800 Florida Avenue NE Washington, DC 20002
Phone 202-250-2249 Email Bison.Shop@gallaudet.edu Store Hours Semester Hours Monday ...

Certificate in Early Intervention Studies - Gallaudet University

Explore Gallaudet University's Certificate in Early Intervention Studies, focusing on collaboration and leadership for supporting deaf and hard-of-hearing infants and families.

Student Health Insurance Plan - Student Health Services

What kind of health insurance coverage do I need to have to be qualified for a waiver? You need to be covered under one of the following health insurance plans to qualify for a waiver: A ...

Your University | Gallaudet University

Discover Gallaudet University, a unique institution dedicated to deaf and hard of hearing students. Explore our vibrant community, academic programs, and campus life.

Explore the Gallaudet Dictionary of American Sign Language and enhance your ASL skills. Discover how this essential resource can transform your communication today!

[Back to Home](#)