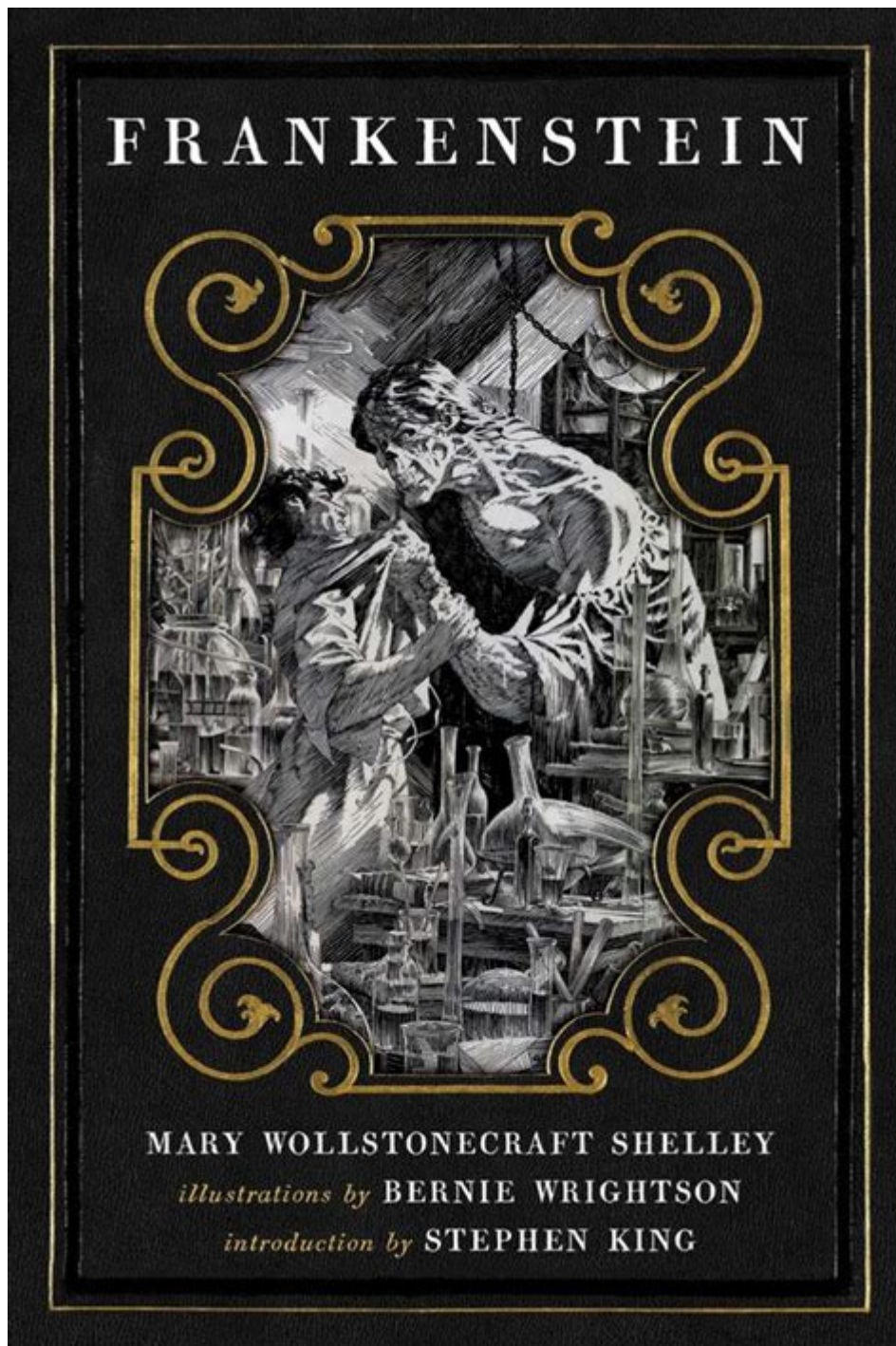


# Frankenstein By Mary Shelley Original Classic Illustrated



**Frankenstein by Mary Shelley Original Classic Illustrated** is a literary masterpiece that has stood the test of time, presenting profound themes of creation, ambition, and the duality of human nature. Published in 1818, Mary Shelley's "Frankenstein" is not only a foundational text in the genre of science fiction but also a poignant exploration of the ethical implications of scientific exploration. The illustrated versions of this classic work add a visual dimension that enhances its rich narrative, allowing readers to delve deeper into the complexities of the story. In this article, we will explore the significance of "Frankenstein," the impact of its illustrated editions, and why it remains relevant

today.

## Overview of Frankenstein

Mary Shelley's "Frankenstein" tells the story of Victor Frankenstein, a young scientist who becomes obsessed with the idea of creating life. Through his experiments, he successfully animates a creature made from the remains of deceased bodies. However, upon seeing the horror of his creation, Victor is filled with regret and horror, leading to a chain of tragic events.

## Thematic Elements

### 1. The Dangers of Ambition

- Victor's relentless pursuit of knowledge and power drives him to create life, ultimately leading to his downfall.
- The novel serves as a cautionary tale about the consequences of overreaching ambition.

### 2. Isolation and Loneliness

- Both Victor and his creature experience profound isolation, with Victor alienated by his guilt and the creature ostracized due to his monstrous appearance.
- The theme highlights the human need for companionship and acceptance.

### 3. Ethics of Creation

- Shelley's work raises questions about the moral implications of scientific advancements and the responsibilities of a creator towards their creations.
- It prompts readers to consider the ethical boundaries of scientific exploration.

## The Illustrated Versions of Frankenstein

Illustrated editions of "Frankenstein" bring a new dimension to the reading experience, enriching the text with visual interpretations of its key themes and characters. Renowned artists have captured the essence of Shelley's narrative, making it accessible to a broader audience.

## Notable Illustrators

### 1. Gustave Doré

- Known for his intricate engravings, Doré's illustrations vividly depict the emotional depth of the characters and the gothic atmosphere of the story.
- His work enhances the reader's imagination and immersion into the world of "Frankenstein."

### 2. Edward Gorey

- Gorey's unique style adds a whimsical yet dark tone to the story, making it appealing to both children and adults.
- His illustrations often highlight the absurdity and tragedy of the characters' situations.

### 3. Bernard Sleigh

- Sleigh's art is notable for its detailed and expressive portrayal of the creature, capturing the pathos of its existence.
- His illustrations help convey the complex emotions that accompany the themes of creation and rejection.

## The Impact of Illustrations on Understanding the Text

Illustrations can significantly enhance the reader's comprehension and appreciation of the narrative. Here are several ways in which illustrated editions contribute to the reading experience:

- Visual Context: Illustrations provide a visual context for readers, helping them to better understand the settings and characters.
- Emotional Resonance: Images can evoke emotions that text alone may struggle to convey, allowing readers to connect more deeply with the material.
- Engagement: Illustrated editions can attract reluctant readers or younger audiences, making the classic story more engaging and accessible.

## Why Frankenstein Remains Relevant Today

The themes explored in "Frankenstein" continue to resonate in contemporary society, especially in the context of rapid scientific advancements and ethical dilemmas.

## Parallels with Modern Science

- Genetic Engineering: As technology progresses, the ethical implications of genetic manipulation and cloning echo Victor Frankenstein's plight.
- Artificial Intelligence: The creation of sentient beings raises questions about responsibility, autonomy, and the definition of life.
- Environmental Concerns: The consequences of unchecked ambition in scientific exploration can also be seen in the context of climate change and environmental degradation.

## Cultural Impact

"Frankenstein" has transcended its literary origins, influencing various forms of art and media:

- Film Adaptations: Numerous movies and adaptations have reinterpreted the story, each offering a different perspective on the themes of creation and monstrosity.
- Theatrical Productions: Stage adaptations often emphasize the emotional aspects of the characters, providing a fresh take on the classic tale.
- Literary References: The archetype of the "mad scientist" and themes of existential dread continue to appear in literature, highlighting the lasting impact of Shelley's work.

# Conclusion

In summary, **Frankenstein by Mary Shelley Original Classic Illustrated** not only provides an engaging reading experience but also invites readers to explore profound philosophical questions about creation, responsibility, and the human condition. The illustrated editions enhance the narrative, offering visual interpretations that deepen our understanding of the text's themes. As society grapples with the ethical implications of scientific advancements, Shelley's cautionary tale remains a vital part of our literary heritage, reminding us of the dangers that lurk in the pursuit of knowledge without consideration for its consequences. Whether you are revisiting the original text or discovering the illustrated versions for the first time, "Frankenstein" offers an enduring exploration of the complexities of creation and humanity.

## Frequently Asked Questions

### What is the central theme of Mary Shelley's 'Frankenstein'?

The central theme of 'Frankenstein' is the quest for knowledge and the consequences of playing God, examining the dangers of unchecked ambition and the moral responsibilities of creation.

### How does Mary Shelley depict the creature in 'Frankenstein'?

Mary Shelley depicts the creature as a complex character, showcasing his initial innocence and longing for acceptance, which transforms into bitterness and rage due to societal rejection.

### What role does nature play in 'Frankenstein'?

Nature serves as a backdrop that influences the characters' emotions and actions, often reflecting Victor Frankenstein's turmoil and the creature's isolation.

### How does the original illustrated version of 'Frankenstein' enhance the story?

The original illustrated version of 'Frankenstein' enhances the story by providing visual representations of key scenes and characters, deepening the reader's engagement and understanding of the narrative.

### What is the significance of the subtitle 'The Modern Prometheus'?

The subtitle 'The Modern Prometheus' signifies Victor Frankenstein's role as a creator who, like Prometheus, defies the natural order, leading to catastrophic consequences for himself and his creation.

### What are the major conflicts in 'Frankenstein'?

The major conflicts in 'Frankenstein' include the internal struggle of Victor Frankenstein with his guilt and responsibility, as well as the external conflict between creator and creature, highlighting themes of isolation and revenge.

## How does Shelley explore the theme of isolation in 'Frankenstein'?

Shelley explores isolation through Victor's alienation from society and the creature's exclusion, illustrating the emotional and psychological toll of being shunned and misunderstood.

## What impact did 'Frankenstein' have on the horror genre?

'Frankenstein' is considered a foundational text of the horror genre, setting the stage for themes of monstrosity, ethical dilemmas in science, and the consequences of human ambition.

## How does the relationship between Victor and the creature evolve throughout the novel?

The relationship between Victor and the creature evolves from creator-creation to adversaries, marked by betrayal, vengeance, and ultimately, mutual destruction.

## What literary techniques does Mary Shelley use in 'Frankenstein'?

Mary Shelley employs various literary techniques, including frame narrative, vivid imagery, and symbolism, to convey complex themes and develop character depth throughout the novel.

Find other PDF article:

<https://soc.up.edu.ph/24-mark/files?trackid=EVv21-2029&title=fundamentals-of-physics-student-solutions-manual.pdf>

## Frankenstein By Mary Shelley Original Classic Illustrated

1818 *Frankenstein*? -

1818 *Frankenstein*? 1818 1823 1831 1831

? -

Mar 28, 2018 · In *Frankenstein*, Victor Frankenstein discovered the secrets (of life itself) and was going to bestow it upon humanity. However, - as if God punished him - he lost everything- his bride, his home, his education, and his life. [by Shane Graham]

*Frankenstein* ...

Mary Shelley *Frankenstein* ... 9

-

1931 **Frankenstein** AFI 56 1935 **Bride of Frankenstein** 31 1974 **Young Frankenstein** AFI 13

-

28 "Hello"

-

10 == 1) ok ...

**1818 Frankenstein?** -

1818 Frankenstein? 1818 1823 1831 1831

? -

Mar 28, 2018 · In Frankenstein, Victor Frankenstein discovered the secrets (of life itself) and was going to bestow it upon humanity. However, - as if God ...

**Frankenstein** ...

Mary Shelley Frankenstein ... 9

-

1931 **Frankenstein** AFI 56 1935 **Bride of Frankenstein** 31 1974 **Young Frankenstein** ...

-

28 ...

Explore the timeless tale of "Frankenstein by Mary Shelley" in this original classic illustrated edition. Discover how this iconic story continues to inspire!

[Back to Home](#)