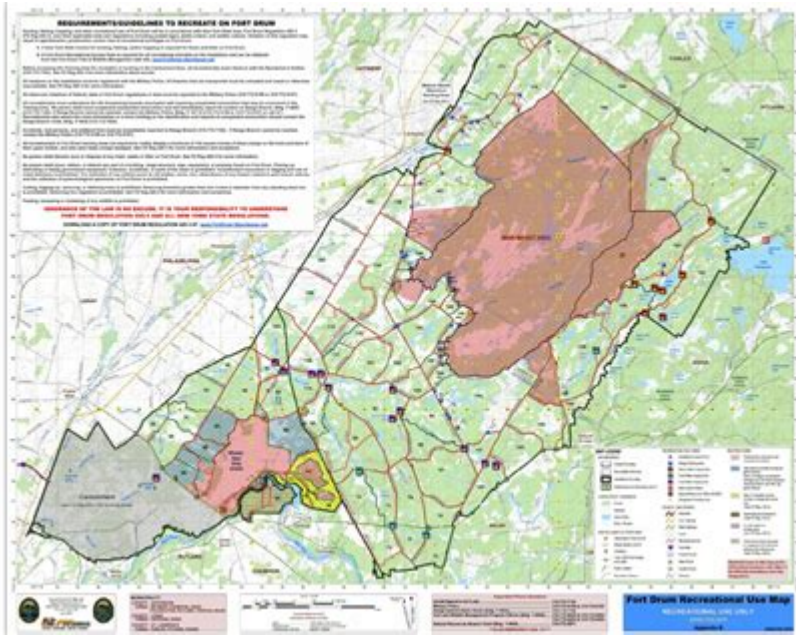


# Fort Drum Training Area Map



**Fort Drum training area map** serves as an essential tool for military personnel, planners, and visitors alike. This comprehensive map not only outlines the extensive training facilities and geographical features of Fort Drum, New York, but also highlights the various terrains that are crucial for military exercises and operations. Understanding the layout and capabilities of the Fort Drum training area is vital for effective planning and execution of military training, ensuring that troops are well-prepared for diverse environments they may encounter in real-world scenarios.

## Overview of Fort Drum

Fort Drum is a major military installation of the United States Army, located in Jefferson County, New York. It is home to the 10th Mountain Division, recognized for its specialization in cold-weather operations and mountain warfare. The base covers approximately 107,000 acres, providing a vast area for various training activities.

## Importance of the Fort Drum Training Area Map

The Fort Drum training area map is crucial for several reasons:

- **Planning and Coordination:** It aids in the planning of training exercises, ensuring that all units are aware of the available facilities and terrains.
- **Safety:** The map highlights restricted areas, potential hazards, and safe zones, promoting safety during training operations.

- **Resource Allocation:** It assists in the allocation of resources and equipment by providing a clear overview of the available training grounds.
- **Visitor Navigation:** For non-military personnel, the map serves as a guide to navigate the base and its surrounding areas.

## Key Features of the Fort Drum Training Area Map

The Fort Drum training area map includes several key features that enhance its utility for military operations:

### Terrain Types

Fort Drum encompasses various terrain types, each designed to simulate different operational environments. The map categorizes these terrains for easy reference:

1. **Forested Areas:** Dense woods that provide cover and concealment for troops.
2. **Open Fields:** Large, unobstructed spaces suitable for maneuver exercises and vehicle operations.
3. **Hills and Mountains:** Elevation changes that facilitate mountain warfare training.
4. **Urban Simulation Areas:** Designed to replicate urban combat scenarios.
5. **Water Obstacles:** Rivers and lakes that offer training for amphibious operations.

### Training Facilities

Fort Drum is equipped with numerous facilities that support a wide range of training activities. The map details the locations of these facilities:

- **Live Fire Ranges:** Designated areas for live ammunition training, including rifle ranges and artillery firing points.
- **Simulated Combat Zones:** Areas designed to mimic real combat environments for tactical training.
- **Vehicle Maneuver Areas:** Spaces allocated for the operation of military vehicles, including tanks and armored personnel carriers.
- **Obstacle Courses:** Facilities for physical training and team-building exercises.

## Using the Fort Drum Training Area Map

Navigating the Fort Drum training area map requires an understanding of its symbols and legends. Here's how to effectively use the map:

# Understanding Map Symbols

The map uses specific symbols to represent various features and facilities. Familiarizing yourself with these symbols is essential for effective navigation. Common symbols include:

- Circle Icons: Represent training facilities such as barracks and classrooms.
- Squares: Indicate supply points and maintenance areas.
- Lines and Dots: Show roads, trails, and pathways for vehicles and troops.

## Planning Your Route

When planning a route for training exercises, consider the following steps:

1. Identify Objectives: Determine the goals of the training exercise and the required terrain.
2. Select Training Areas: Use the map to find suitable training facilities and terrains.
3. Plan Safe Routes: Chart a course that avoids restricted areas and potential hazards.
4. Coordinate with Leadership: Ensure that all plans are communicated with commanding officers to avoid conflicts with other units.

## Environmental Considerations at Fort Drum

Training at Fort Drum is not only about military tactics but also involves understanding the environmental aspects of the training area. The map provides insights into:

### Wildlife and Ecosystems

Fort Drum is home to a diverse range of flora and fauna. Understanding the local ecosystem is crucial for:

- Minimizing Environmental Impact: Ensuring that training activities do not harm local wildlife or habitats.
- Compliance with Regulations: Adhering to environmental regulations and guidelines.

### Weather Conditions

The weather at Fort Drum can be extreme, particularly in winter. The map may include weather-related information such as:

- Temperature Variations: Knowing the average temperatures can help in planning appropriate gear and clothing.
- Seasonal Changes: Understanding how seasonal changes affect terrain and visibility.

# Resources for Accessing the Fort Drum Training Area Map

Accessing the Fort Drum training area map is essential for both military personnel and visitors. Here are some resources to consider:

## Official Fort Drum Website

The official website of Fort Drum often provides updated maps and training area information. It is a reliable source for current training schedules and facility availability.

## Mobile Applications

There are several mobile applications designed for military personnel that include maps of training areas, providing real-time updates and navigational tools.

## Local Military Offices

For those on-site, local military offices can provide printed maps and additional resources for navigating Fort Drum's training areas.

## Conclusion

In conclusion, the **Fort Drum training area map** is an invaluable resource for military training and operations. Its detailed representation of terrains, facilities, and environmental considerations ensures that military personnel can effectively plan and execute training exercises. By understanding how to utilize the map, soldiers can enhance their preparedness for a variety of operational scenarios, making Fort Drum a vital component in the training of the U.S. Army's forces. Whether for planning, safety, or navigation, the Fort Drum training area map is an essential tool for all who operate within its expansive grounds.

## Frequently Asked Questions

### What is the Fort Drum Training Area map primarily used for?

The Fort Drum Training Area map is used primarily for military training, navigation, and planning exercises within the Fort Drum military installation.

## How can I access the Fort Drum Training Area map?

The Fort Drum Training Area map can be accessed through the official Fort Drum website or by visiting the installation's planning office for physical copies.

## Are there any updates to the Fort Drum Training Area map?

Yes, the Fort Drum Training Area map is periodically updated to reflect changes in terrain, training facilities, and regulations, so it's important to check for the latest version.

## What features are highlighted on the Fort Drum Training Area map?

The map highlights various features such as training zones, access roads, safety zones, environmental areas, and points of interest for military operations.

## Is the Fort Drum Training Area map available for public use?

While the Fort Drum Training Area map is primarily for military use, some areas may be accessible to the public, but it is recommended to check with local authorities before visiting.

## How often do training exercises occur in the Fort Drum Training Area?

Training exercises in the Fort Drum Training Area occur frequently, often on a weekly basis, depending on the training schedule and unit requirements.

Find other PDF article:

<https://soc.up.edu.ph/18-piece/Book?trackid=Mrx36-8348&title=dragon-age-2-mage-guide.pdf>

## Fort Drum Training Area Map

**Oak Fort** ██████████ ██████████\_█████████

Oct 30, 2024 · Oak Fort ██████████ ██████████Oak Fort ██████████ ██████████ Oak Fort ██████████ ██████████ ██████████ ██████████ ...

████████████████████ - ██████████

████████████████████ 1 ██████████ ██████████ (Austin) ██████████ 2 ██████████ ██████████ (Houston) ██████████ (Galveston) ██████████ (Texas City) ██████████ (Beaumont) ██████████ ...

midas ██████████:FORT.76was denied\_ ██████████

Apr 6, 2022 · midas:FORT.76was denied  
*fort* *fort*.  
fort *fort*. 65, 65 *fort*.65  
62 ...

**fort** **fortress**?  
Feb 3, 2006 · fort 1. "Fortress" can be used alone. For example:  
We must take over this fortress before the sunset. "Fort" has ...

**"fort " "fortress " | HiNative**  
fort They're kinda the same thing, but a "fort" tends to be a building whereas a "fortress" can be many buildings or a city. They both are in a sense strong for military purposes.

*"hold down the fort"* -  
hold down the fort Literally speaking it can mean 'protect this place' but these days it's a common term that just means 'look after the place'. The place can be anywhere, like you ...

**be good for** **be good with** **be good to** **be good at**  
be good for be good with be good to be good at be good  
be good for... for ...

**Fort Wayne** -  
Fort Wayne 16.5 1984 38.2 1980  
...

**Fort Minor** **Kenji**  
Aug 16, 2013 · Fort Minor Kenji: Kenji: Fort Minor: The Rising Tied Fort Minor Kenji My father came from Japan in 1905 He was 15 when he immigrated from Japan He, ...

Oak Fort  
Oct 30, 2024 · Oak Fort Oak Fort Oak Fort  
...

-  
1 (Austin) 2 (Houston) (Galveston)  
(Texas City) (Beaumont) ...

*midas:FORT.76was denied*  
Apr 6, 2022 · midas:FORT.76was denied

**fort** **fort**.  
fort *fort*. 65, 65 *fort*.65  
62 ...

*fort* *fortress*?  
Feb 3, 2006 · fort 1. "Fortress" can be used alone. For example:  
We must take over this fortress before the sunset. "Fort" has ...

**"fort " "fortress " | HiNative**  
fort They're kinda the same thing, but a "fort" tends to be a building whereas a "fortress" can be

many buildings or a city. They both are in a sense strong for military purposes.

"hold down the fort" - ( )

hold down the fort Literally speaking it can mean 'protect this place' but these days it's a common term that just means 'look after the place'. The place can be anywhere, like you ...

be good for be good with be good to be good at

be good for be good with be good to be good at be good be good for ... for ...

Fort Wayne -

Fort Wayne 16.5 1984 38.2 1980

Fort Minor Kenji

Aug 16, 2013 · Fort Minor Kenji: Kenji: Fort Minor: The Rising Tied Fort Minor Kenji My father came from Japan in 1905 He was 15 when he immigrated from Japan He, ...

Explore the Fort Drum training area map to enhance your understanding of military operations and terrain. Discover how this vital resource can guide your next mission!

[Back to Home](#)