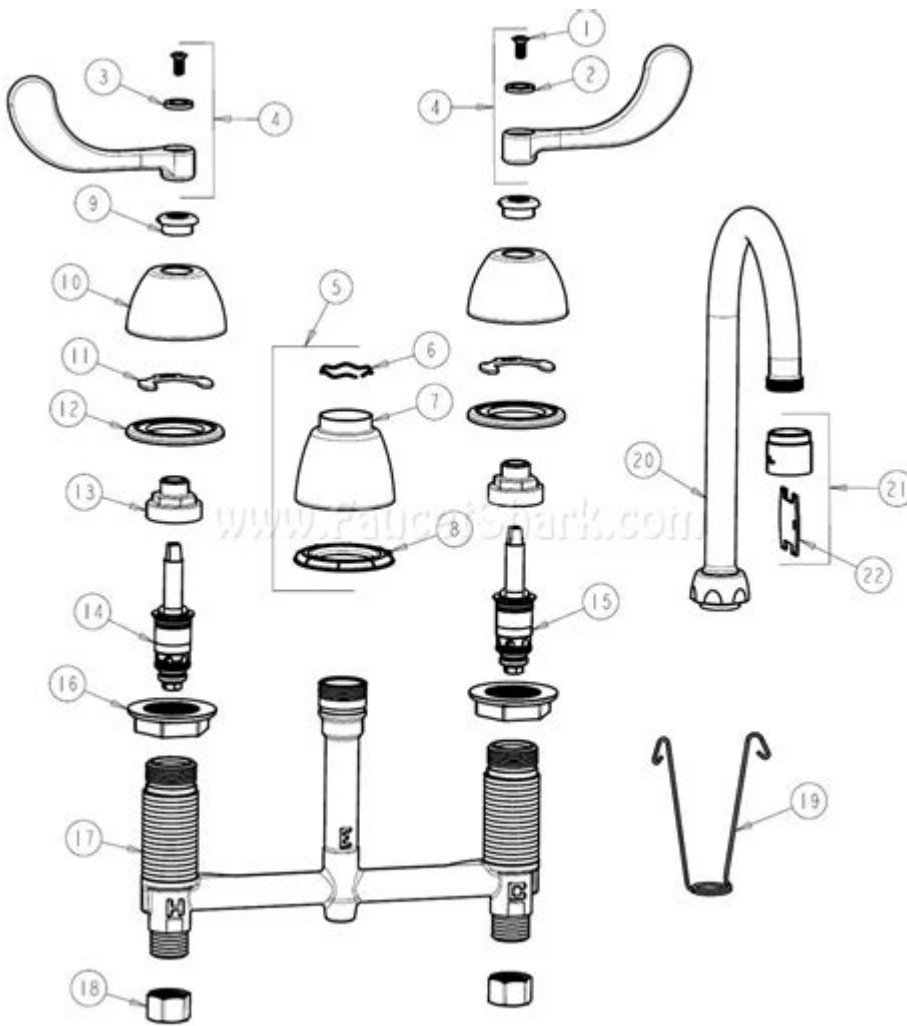


Franke Faucet Parts Diagram



Franke faucet parts diagram plays a crucial role in understanding the various components that make up your Franke faucet. Knowing the parts of your faucet can help you troubleshoot issues, perform maintenance, or even guide you in replacing parts when necessary. In this article, we will delve into the Franke faucet parts diagram, discussing each component, its function, and the importance of understanding how these parts work together to ensure a smooth and efficient water flow.

Understanding the Franke Faucet Parts Diagram

A Franke faucet is an essential addition to any kitchen or bathroom, combining functionality with style. To maintain your faucet's performance, it's important to familiarize yourself with its parts. The Franke faucet parts diagram typically includes various elements such as:

- Spout
- Handle

- Cartridge
- Base
- Supply Lines
- Mounting Hardware
- Spray Head (for pull-down or pull-out models)

Each of these components plays a significant role in the overall functionality of the faucet. Let's explore them in detail.

The Main Components of Franke Faucets

1. Spout

The spout is the part of the faucet from which water flows. In Franke faucets, spouts come in various designs and heights, allowing you to choose one that fits your kitchen or bathroom aesthetics. The spout can also have features like a swivel function, which enhances usability by allowing the spout to move around a wider area.

2. Handle

The handle controls the flow and temperature of the water. Franke faucets often feature single-handle or dual-handle designs. A single-handle faucet allows you to adjust both the temperature and flow with one hand, while dual-handle faucets provide separate controls for hot and cold water, giving you more precise control over water temperature.

3. Cartridge

The cartridge is a vital component that regulates water flow and temperature. It is located inside the faucet body and can vary in design depending on the type of faucet you have. If you notice leaks or difficulty in adjusting water temperature, it might be time to replace the cartridge.

4. Base

The base of the faucet is where it connects to the sink or countertop. A secure base is essential for the stability of the faucet, preventing wobbling or accidental disconnection. Some Franke faucets come with a cover plate, which can be used to hide unused holes in your sink.

5. Supply Lines

Supply lines are the tubes that deliver water from your home's plumbing to the faucet. These lines must be properly connected and in good condition to ensure a steady flow of water. Leaking supply lines can lead to water damage,

so it's important to inspect these regularly.

6. Mounting Hardware

Mounting hardware includes screws, washers, and brackets that secure the faucet to the sink or countertop. The quality of the mounting hardware is essential for ensuring the faucet remains firmly in place, preventing movement or leaks over time.

7. Spray Head

For pull-down or pull-out faucets, the spray head is an additional feature that allows users to switch between a steady stream and a spray mode. This is especially useful for rinsing dishes or cleaning the sink. The spray head is typically attached to a retractable hose, making it easy to maneuver.

Common Issues and Solutions

Understanding the Franke faucet parts diagram also helps in identifying common issues that may arise with your faucet. Here are some common problems and their potential solutions:

1. Dripping Faucet

A dripping faucet is often caused by a worn-out cartridge or a loose connection in the supply line. To fix this issue, you can:

1. Turn off the water supply.
2. Disassemble the faucet and inspect the cartridge for wear.
3. Replace the cartridge if necessary.
4. Ensure all connections are tight before reassembling.

2. Low Water Pressure

Low water pressure can be attributed to mineral buildup in the aerator or issues with the supply lines. To resolve this:

1. Check the aerator for blockages and clean it if needed.
2. Inspect the supply lines for kinks or leaks.
3. Ensure that the water supply valve is fully open.

3. Difficulty in Adjusting Temperature

If you're having trouble adjusting the water temperature, the cartridge may be the culprit. You can:

1. Turn off the water supply and remove the handle.
2. Inspect the cartridge for any damage or blockage.
3. Replace the cartridge if it appears faulty.

Maintenance Tips for Franke Faucets

To ensure the longevity of your Franke faucet and its parts, regular maintenance is essential. Here are some tips:

- Regularly clean the aerator to prevent mineral buildup.
- Inspect supply lines for leaks or wear.
- Check the handle and cartridge for smooth operation.
- Wipe down the faucet with a soft cloth to prevent water spots and corrosion.
- Replace any worn parts promptly to avoid further damage.

Conclusion

Having a clear understanding of the **Franke faucet parts diagram** is invaluable for any homeowner or DIY enthusiast. By familiarizing yourself with each component, you can effectively troubleshoot issues, perform necessary maintenance, and ensure your faucet remains in optimal working condition. Whether you're dealing with a simple drip or considering a full replacement, knowing your faucet inside and out can save you time and money in the long run. Always consult the manufacturer's manual for specific guidance related to your particular faucet model, and don't hesitate to contact a professional plumber for complex repairs.

Frequently Asked Questions

What is a Franke faucet parts diagram?

A Franke faucet parts diagram is a visual representation that illustrates the various components of a Franke faucet, helping users identify and locate specific parts for maintenance or replacement.

Where can I find a Franke faucet parts diagram?

Franke faucet parts diagrams can typically be found on the official Franke website, in product manuals, or through customer service. Additionally, many plumbing supply stores may have printed diagrams available.

Why is a parts diagram important for my Franke faucet?

A parts diagram is important because it helps users understand the configuration of their faucet, making it easier to troubleshoot issues, order the correct replacement parts, and perform repairs.

Can I order replacement parts using the Franke faucet parts diagram?

Yes, once you identify the specific parts needed from the Franke faucet parts diagram, you can order them directly from Franke's website or through authorized retailers.

How do I read a Franke faucet parts diagram?

To read a Franke faucet parts diagram, look for labeled sections that correspond to different components. Each part will usually have a reference number that matches with a list of parts and their descriptions.

Are Franke faucet parts diagrams specific to each model?

Yes, Franke faucet parts diagrams are specific to each model, so it's important to ensure you're looking at the correct diagram for your faucet model to avoid ordering the wrong parts.

What common issues can be resolved with a Franke faucet parts diagram?

Common issues that can be resolved include leaks, low water pressure, and malfunctioning handles or sprays. The diagram helps identify which parts may be causing the problem.

Do I need special tools to replace parts indicated in the Franke faucet parts diagram?

Depending on the specific part and faucet design, you may need basic tools like screwdrivers or wrenches. The parts diagram may provide insights into the tools required for installation or repair.

Find other PDF article:

<https://soc.up.edu.ph/54-tone/files?ID=PlF95-3255&title=social-security-taxable-worksheet-2022.pdf>

Franke Faucet Parts Diagram

Home [www.franke.com]

We strive to create an environment where you can grow and help shape the future for Franke.
Franke - Opening up a world of opportunities Solutions and systems are built on precision ...

Products - Franke

Our trusted Franke partners are ready to bring your vision to life. The world's most advanced water filtration system for high-quality, filtered water straight from your kitchen tap. Stop buying ...

Welcome to the world of Franke kitchen products

Start your journey and explore our wide range of products and product families in various materials and colours - perfect for your next kitchen project.

#1 Commercial Kitchen Equipment Supplier - Ontario & Atlantic ...

As Canada's largest supplier of Taylor®, Henny Penny®, Franke, and ICETRO equipment, we help foodservice businesses of all sizes optimize efficiency and deliver exceptional results. High ...

Franke - The Ensuite Bath & Kitchen Showrooms | Ontario

Franke combines engineering with modern technology, functional aesthetics and integrated services. In this way, we make professional and private kitchens as well as coffee preparation ...

Franke Sinks, Faucets and Accessories | Kolani Kitchen & Bath

Franke Bathroom Sinks, Kitchen Sinks, Kitchen Faucets, Bathroom Accessories, and more.

Franke-Catalog-Canada

...

FRANKE Kitchen Sinks, Faucets & Fixtures in the GTA | TAPS

Experience the pleasures of cooking, eating and entertaining in a kitchen fitted with Franke kitchen faucets and sinks. Whether your style is classic or modern, you still want an elegant design and ...

Franke Residential Canada Kitchen Sinks - Mississauga-Ontario ...

Franke Maris Undermount 27-in x 19-in Fraganite Single Bowl Kitchen Sink in ...

Franke Retailer - TAPS WHOLESALE BATH CENTRE in MISSISSAUGA, Ontario ...

Franke Retailer - TAPS WHOLESALE BATH CENTRE in MISSISSAUGA, Ontario (Kitchen Appliance) - Location & Hours

Home [www.franke.com]

We strive to create an environment where you can grow and help shape the future for Franke.
Franke - Opening up a world of opportunities Solutions ...

Products - Franke

Our trusted Franke partners are ready to bring your vision to life. The world's most advanced water filtration system for high-quality, filtered water ...

Welcome to the world of Franke kitchen products

Start your journey and explore our wide range of products and product families in various materials

and colours - perfect for your next kitchen project.

#1 Commercial Kitchen Equipment Supplier - Ontari...

As Canada's largest supplier of Taylor®, Henny Penny®, Franke, and ICETRO equipment, we help foodservice businesses of all sizes optimize ...

Franke - The Ensuite Bath & Kitchen Showrooms | Ontario

Franke combines engineering with modern technology, functional aesthetics and integrated services. In this way, we make professional and ...

Discover the essential Franke faucet parts diagram for easy repairs and maintenance. Learn more about identifying components and enhancing your faucet's performance!

[Back to Home](#)