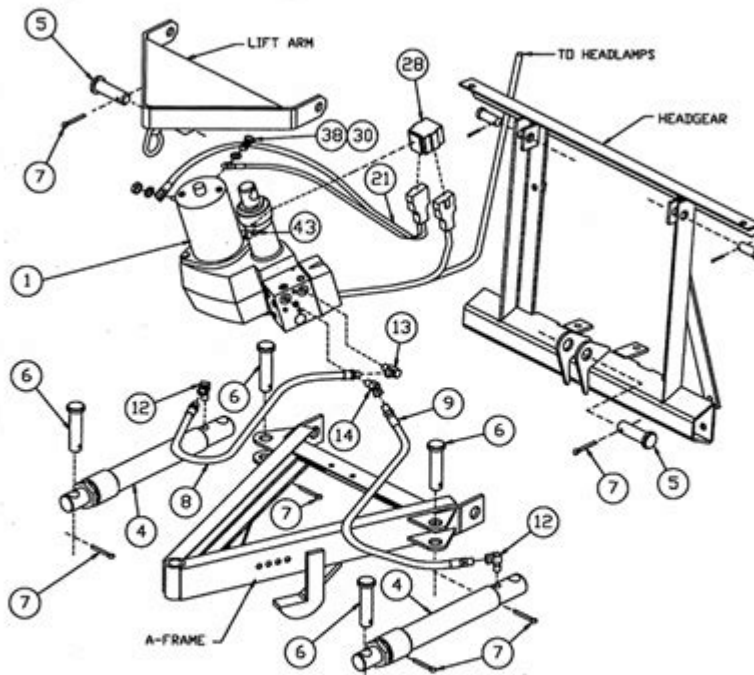


# Fisher Plow Minute Mount Manual



Solenoid Electric Hydraulic Pak

8225/  
8240



NOTE: LIFT ARM, HEADGEAR, & A-FRAME ARE IN COMMON ATTACHMENT KIT.

6443

FISHER ENGINEERING, ROCKLAND, MAINE 04841

5/5/98

**Fisher plow minute mount manual** is an essential resource for anyone who owns or operates a Fisher snow plow. This manual provides comprehensive guidance on the installation, operation, and maintenance of Fisher's innovative Minute Mount system, which allows for quick and efficient attachment and detachment of the plow. In this article, we will explore the key components of the Fisher plow Minute Mount system, its benefits, and how to properly use and maintain the equipment for optimal performance.

## Understanding the Fisher Minute Mount System

The Fisher Minute Mount system revolutionized the way snow plows are mounted to vehicles. This system is designed for ease of use, allowing operators to

attach and detach their plows quickly without needing any additional tools. The following sections will cover the main features that make the Minute Mount system unique.

## **Key Features of the Minute Mount System**

1. **Quick Attachment and Detachment:** The Minute Mount system allows users to attach or detach the plow in under a minute. This is particularly beneficial during harsh weather conditions when time is of the essence.
2. **Robust Design:** Fisher plows are constructed with high-quality materials designed to withstand the rigors of snow removal. The Minute Mount system is engineered for durability, ensuring long-term performance.
3. **Integrated Safety Features:** The system includes safety mechanisms that prevent accidental detachment, offering peace of mind for operators.
4. **Versatility:** Fisher offers a range of plow models that can be easily mounted using the Minute Mount system, making it suitable for various vehicle types.

## **Installation of the Fisher Minute Mount System**

Proper installation of the Fisher Minute Mount system is crucial for optimal performance and safety. Below are the steps to follow when installing the system on your vehicle.

### **Installation Steps**

1. **Preparation:**
  - Gather all necessary tools, including a socket set, wrenches, and screwdrivers.
  - Read through the Fisher plow Minute Mount manual to familiarize yourself with the components and installation process.
  - Ensure your vehicle is parked on a level surface and the engine is off.
2. **Mounting the Brackets:**
  - Locate the mounting brackets that come with your Fisher plow.
  - Align the brackets with the vehicle's frame according to the specifications in the manual.
  - Securely bolt the brackets to the frame using the provided hardware.
3. **Installing the Plow Frame:**
  - Position the plow frame onto the mounted brackets.
  - Ensure that all pins and clips are properly inserted to secure the frame in

place.

#### 4. Wiring:

- Connect the electrical wiring harness to your vehicle's battery and the plow.
- Follow the wiring diagram provided in the manual to ensure correct connections.

#### 5. Testing:

- Before heading out into the snow, test the connection by operating the plow up and down. Ensure that all movements are smooth and that the system operates as intended.

## Operating the Fisher Minute Mount Plow

Once installed, operating the Fisher Minute Mount plow is straightforward. However, understanding the controls and functions will enhance your efficiency during snow removal.

## Understanding the Controls

- **Up/Down Control:** This control raises and lowers the plow blade. Familiarize yourself with the sensitivity of the control for smoother operation.
- **Angle Control:** Many Fisher plows allow for blade angling to direct snow to the side. Make sure you understand how to adjust this feature for optimal performance.
- **Lights:** If your plow is equipped with lights, ensure they are functional before starting your work.

## Maintenance of the Fisher Minute Mount System

Regular maintenance is key to ensuring that your Fisher plow Minute Mount system operates efficiently and lasts for many seasons. Here are some essential maintenance tips:

## Routine Maintenance Checklist

- **Inspect the Plow Blade:** Check for signs of wear, cracks, or damage. Replace the blade if necessary.
- **Check Hydraulic Fluid Levels:** Low hydraulic fluid can lead to poor performance. Ensure levels are within the recommended range.

- **Lubricate Moving Parts:** Apply grease to all pivot points and moving components to reduce wear and tear.
- **Inspect Electrical Connections:** Regularly check the wiring for frays or corrosion. Clean connections to ensure good conductivity.
- **Wash the Plow:** After each use, wash the plow to remove salt and debris that can cause rust.

## Seasonal Maintenance

At the beginning and end of each snow season, perform a comprehensive inspection and maintenance routine:

1. **Check for Rust:** Inspect the frame and blade for any signs of rust. Treat any affected areas with rust inhibitor.
2. **Test All Controls:** Ensure that all controls are functioning correctly; replace any faulty switches or wiring.
3. **Review the Manual:** Always refer back to the Fisher plow Minute Mount manual for specific maintenance recommendations for your model.

## Troubleshooting Common Issues

Even with regular maintenance, you may encounter issues with your Fisher Minute Mount system. Here are some common problems and their solutions:

### Common Problems

1. **Plow Won't Raise:**
  - Check hydraulic fluid levels. If low, refill and test again.
  - Inspect the hydraulic pump for any signs of damage or malfunction.
2. **Electrical Issues:**
  - If controls are unresponsive, check all electrical connections for corrosion or damage.
  - Test the vehicle's battery to ensure it has sufficient charge.
3. **Blade Not Angling:**
  - Ensure that there is no debris blocking the angle mechanism.
  - Check the angle control switch for proper operation.

# Conclusion

The **Fisher plow minute mount manual** serves as a vital guide for anyone using the Minute Mount system. By understanding the installation, operation, and maintenance of this effective snow plowing tool, operators can ensure a smooth and efficient snow removal experience. Regular upkeep and troubleshooting are essential to extend the life of your equipment and maintain its performance through the winter months. For any specific problems or questions, always refer back to the manual or consult with a Fisher dealer for expert advice.

## Frequently Asked Questions

### **What is the Fisher Plow Minute Mount manual used for?**

The Fisher Plow Minute Mount manual provides instructions for the installation, operation, and maintenance of the Minute Mount plow system, ensuring optimal performance and safety.

### **Where can I find the Fisher Plow Minute Mount manual?**

The Fisher Plow Minute Mount manual can typically be found on the official Fisher Engineering website or through authorized dealers and distributors.

### **Is there a digital version of the Fisher Plow Minute Mount manual available?**

Yes, many manufacturers provide a digital PDF version of the Fisher Plow Minute Mount manual that can be downloaded from their website.

### **What are the key features of the Fisher Minute Mount system?**

Key features of the Fisher Minute Mount system include quick attachment and detachment, adjustable angles for plowing, and compatibility with various truck models.

### **How do you properly maintain a Fisher Plow Minute Mount?**

Proper maintenance includes regular inspections for wear and tear, lubricating moving parts, checking hydraulic fluid levels, and ensuring all electrical connections are secure.

## **What tools are needed to install the Fisher Plow Minute Mount?**

Common tools needed for installation include wrenches, sockets, a drill, and possibly a torque wrench, as specified in the Fisher Plow Minute Mount manual.

## **Can I troubleshoot issues without the Fisher Plow Minute Mount manual?**

While some basic troubleshooting can be done without the manual, having it on hand is highly recommended for detailed guidance on diagnosing and fixing specific problems.

## **What safety precautions should be followed when using the Fisher Minute Mount plow?**

Safety precautions include wearing appropriate gear, ensuring the plow is securely attached before use, and following all operational guidelines outlined in the manual.

## **Are there any common issues mentioned in the Fisher Plow Minute Mount manual?**

Yes, the manual often includes common issues like hydraulic leaks, electrical failures, and plow alignment problems, along with troubleshooting steps for each.

## **How often should I refer to the Fisher Plow Minute Mount manual?**

It's advisable to refer to the manual before installation, during maintenance checks, and whenever you encounter operational issues to ensure proper use and care.

Find other PDF article:

<https://soc.up.edu.ph/32-blog/Book?trackid=NaZ49-3042&title=in-a-blink-of-an-eye-movie.pdf>

## **[Fisher Plow Minute Mount Manual](#)**

Laboratory & Production Essentials | Fisher Scientific

Programs and Resources Fisher Scientific Edge Products Get same-day shipping on select lab essentials, chemicals, and ...

## **Products | Fisher Scientific**

Convenient access to the most comprehensive offering of laboratory, healthcare, and safety products and ...

## **Fisherbrand Lab Equipment | Fisher Scientific**

Browse the Fisherbrand portfolio of over 18,000 products including lab equipment, instruments, and consumables, ...

## Essentiels de laboratoire et de production | Fisher Scientific

Programmes et ressources Produits Fisher Scientific Edge Expédition le jour même : essentiels de labo et produits chimiques ...

## **Fisher Scientific**

Part of Thermo Fisher Scientific | About Us | Customer Support | Help | Sitemap | Contact Us | Website Terms and ...

## **Laboratory & Production Essentials | Fisher Scientific**

Programs and Resources Fisher Scientific Edge Products Get same-day shipping on select lab essentials, chemicals, and much more.

## **Products | Fisher Scientific**

Convenient access to the most comprehensive offering of laboratory, healthcare, and safety products and services.

## *Fisherbrand Lab Equipment | Fisher Scientific*

Browse the Fisherbrand portfolio of over 18,000 products including lab equipment, instruments, and consumables, available through the Fisher Scientific channel.

## **Essentiels de laboratoire et de production | Fisher Scientific**

Programmes et ressources Produits Fisher Scientific Edge Expédition le jour même : essentiels de labo et produits chimiques sélectionnés, et beaucoup plus.

## **Fisher Scientific**

Part of Thermo Fisher Scientific | About Us | Customer Support | Help | Sitemap | Contact Us | Website Terms and Conditions | Sales Terms and Conditions | Privacy

## **Fisher Chemical**

Explore trusted, reliable Fisher Chemical analytical chemicals for your research or production, including dry reagents, acids, solutions, and solvents.

## Contact Us - Fisher Sci

In case of a Chemical Emergency, Thermo Fisher Scientific has an Emergency Response procedure in place to connect you with professionals for spills occurring anywhere in North ...

## **Thermo Scientific Products | Fisher Scientific**

Ethanol, 70% Solution, Molecular Biology Grade, Denatured, Fisher BioReagents™

## **Incubators | Fisher Scientific**

Browse a full range of Incubators products from leading suppliers. Shop now at Fisher Scientific for all of your scientific needs.

SAFETY DATA SHEET - Fisher Sci

Company Importer/Distributor Fisher Scientific 112 Colonnade Road, Ottawa, ON K2E 7L6, Canada  
Tel: 1-800-234-7437

"Find the complete Fisher Plow Minute Mount manual for setup and maintenance. Ensure optimal performance this winter. Learn more and plow with confidence!"

[Back to Home](#)