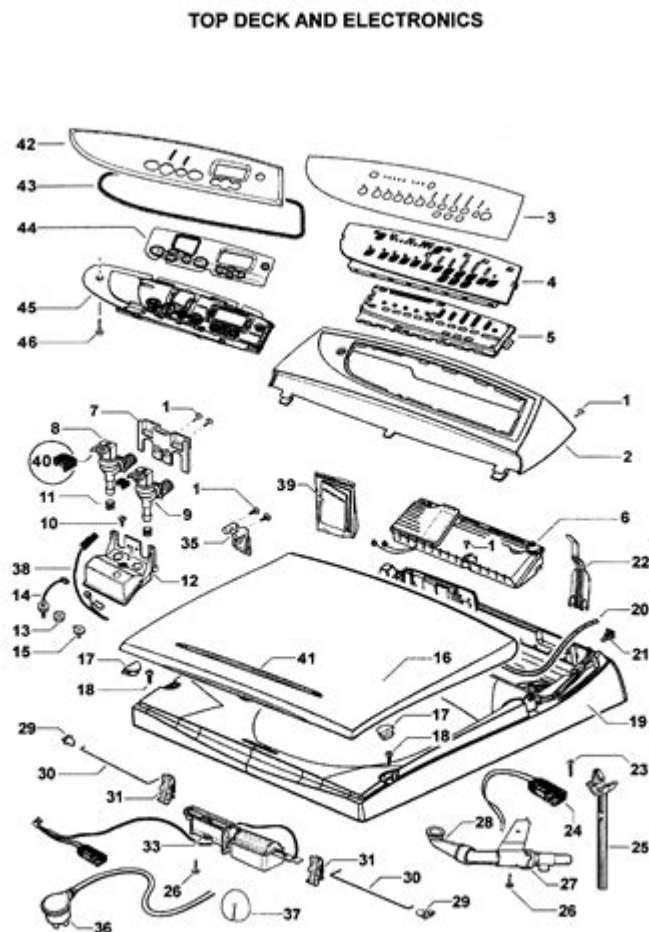


Fisher Paykel Parts Diagram



9/04

Fisher Paykel parts diagram plays a crucial role in the effective maintenance and repair of Fisher Paykel appliances. For both homeowners and technicians, having access to a detailed parts diagram can simplify the troubleshooting process and streamline repairs. Whether you own a Fisher Paykel dishwasher, refrigerator, or washing machine, understanding the components and their functions is essential for optimal appliance performance. In this article, we will explore the importance of Fisher Paykel parts diagrams, detail the common appliances that require them, and provide tips on how to effectively use these diagrams for repairs.

Understanding Fisher Paykel Parts Diagrams

Fisher Paykel parts diagrams are visual representations that illustrate the various components of their appliances. These diagrams are typically found in the service manuals and are essential for anyone looking to repair or replace parts in Fisher Paykel appliances. Here's what you need to know:

Importance of Parts Diagrams

1. **Visual Reference:** Parts diagrams provide a clear visual reference that can help you identify the location and arrangement of components in your appliance.
2. **Ease of Repair:** When undertaking repairs, having a parts diagram can make it easier to locate parts, understand how they fit together, and follow the correct repair procedures.
3. **Parts Identification:** Diagrams often include part numbers, making it simpler to order the exact replacement parts you need.
4. **Troubleshooting:** Understanding the parts and their functions can assist in diagnosing issues with the appliance.
5. **Time-Saving:** By having a clear understanding of the components, you can save time during repairs, reducing the likelihood of errors.

Common Fisher Paykel Appliances and Their Parts Diagrams

Fisher Paykel manufactures a wide range of home appliances. Below are some of the most common appliances and a brief overview of their respective parts diagrams.

1. Fisher Paykel Dishwashers

Fisher Paykel dishwashers are known for their innovative design and efficiency. The parts diagram for a dishwasher typically includes:

- **Control Panel:** Shows buttons and electronic components.
- **Spray Arms:** Illustrates the positioning of upper and lower spray arms.
- **Pump Assembly:** Details the pump, motor, and associated seals.
- **Racks:** Depicts the configuration of the upper and lower racks.

2. Fisher Paykel Refrigerators

Fisher Paykel refrigerators come with various features that require detailed diagrams for maintenance. Key components in the parts diagram include:

- Compressor: Displays the location and connections of the compressor.
- Evaporator Coils: Illustrates the coils responsible for cooling.
- Thermostat: Details the placement of the temperature control.
- Shelves and Drawers: Shows the arrangement and any adjustable components.

3. Fisher Paykel Washing Machines

Fisher Paykel washing machines are designed for efficiency and user-friendliness. The parts diagram usually features:

- Drum Assembly: Illustrates the drum and any relevant bearings or seals.
- Control Board: Shows the electronic components and wiring.
- Water Inlet Valve: Details how the valve connects to the water supply.
- Agitator: Depicts the placement of the agitator and its parts.

How to Use Fisher Paykel Parts Diagrams

Using Fisher Paykel parts diagrams effectively can enhance your repair experience. Here are some tips to make the most of these diagrams:

1. Locate the Correct Diagram

Before starting any repair, ensure that you have the correct parts diagram for your specific model. You can often find these diagrams in:

- Owner's Manuals: Check the manual that came with your appliance.
- Manufacturer's Website: Visit the Fisher Paykel website and look for service manuals or parts diagrams.
- Online Repair Forums: Websites dedicated to appliance repair may also host valuable resources.

2. Identify the Problem

Before diving into repairs, take the time to diagnose the issue thoroughly. Understanding what part is malfunctioning will help you focus on the relevant section of the parts diagram.

3. Use the Diagram for Guidance

Once you have identified the problem part, use the diagram to:

- Locate the Part: Find the exact location of the part within the appliance.
- Understand the Assembly: Review how the part connects to other components to ensure you know how to disassemble and reassemble correctly.
- Check Part Numbers: Write down the part number for easy reference when ordering replacements.

4. Take Notes and Photos

During disassembly, take notes and photos to document the process. This can be especially helpful when it comes time to reassemble the appliance.

5. Follow Safety Precautions

Always prioritize safety when working with appliances. Disconnect power sources and water supplies before starting any repairs, and wear appropriate safety gear.

Where to Find Replacement Parts

Once you have identified the part that needs replacement, the next step is to find a reliable source for purchasing the part. Here are some options:

1. Official Fisher Paykel Website

The best place to start is the official Fisher Paykel website, where you can find genuine parts and accessories for your appliance.

2. Authorized Dealers

Contact authorized Fisher Paykel dealers or service centers in your area. They can help you procure the correct parts.

3. Online Retailers

Several online retailers specialize in appliance parts. Make sure to check reviews and ratings to ensure the reliability of the seller.

4. Local Appliance Repair Shops

Local repair shops may have the parts you need in stock or can assist in ordering them for you.

Conclusion

In summary, a comprehensive understanding of the **Fisher Paykel parts diagram** can significantly enhance your ability to maintain and repair your appliances. By familiarizing yourself with the various components, utilizing the diagrams for effective troubleshooting, and sourcing replacement parts correctly, you can extend the life of your Fisher Paykel appliances and ensure they operate at their best. Whether you're a seasoned technician or a homeowner tackling repairs for the first time, these diagrams are invaluable tools for successful appliance maintenance.

Frequently Asked Questions

What is a Fisher Paykel parts diagram?

A Fisher Paykel parts diagram is a visual representation that outlines the various components of Fisher Paykel appliances, helping users identify parts for maintenance or repair.

Where can I find a Fisher Paykel parts diagram?

You can find Fisher Paykel parts diagrams on the official Fisher Paykel website, in the appliance's user manual, or through authorized service centers.

How do I read a Fisher Paykel parts diagram?

To read a Fisher Paykel parts diagram, locate the part number on the diagram, which corresponds to specific components. Each part is usually labeled for easy identification.

Are Fisher Paykel parts diagrams available for all models?

Yes, Fisher Paykel provides parts diagrams for most of their appliance models, but availability may vary for older or discontinued models.

Can I order parts directly from the Fisher Paykel parts diagram?

Yes, you can use the part numbers from the Fisher Paykel parts diagram to order replacement parts directly from Fisher Paykel or authorized retailers.

Is there a cost associated with obtaining a Fisher Paykel parts diagram?

Generally, Fisher Paykel parts diagrams are provided for free on their website or within user manuals, but some third-party services may charge for detailed guides.

What should I do if I can't find a specific part on the Fisher Paykel parts diagram?

If you can't find a specific part, consider contacting Fisher Paykel customer service or a licensed technician for assistance in identifying and obtaining the part.

Are Fisher Paykel parts diagrams useful for DIY repairs?

Yes, Fisher Paykel parts diagrams are very useful for DIY repairs as they allow users to accurately identify and order the parts needed for repairs.

Do I need special tools to access the Fisher Paykel parts diagram?

No special tools are required to access a Fisher Paykel parts diagram, as they are typically available online or in manuals.

Can I use Fisher Paykel parts diagrams for troubleshooting issues?

Yes, Fisher Paykel parts diagrams can help troubleshoot issues by allowing you to identify which parts may be malfunctioning or need replacement.

Find other PDF article:

<https://soc.up.edu.ph/52-snap/Book?dataid=ALu34-6366&title=science-olympiad-bridge-division-c.pdf>

Fisher Paykel Parts Diagram

Laboratory & Production Essentials | Fisher Scientific

Programs and Resources Fisher Scientific Edge Products Get same-day shipping on select lab essentials, chemicals, and much more.

Products | Fisher Scientific

Convenient access to the most comprehensive offering of laboratory, healthcare, and safety products and services.

Fisherbrand Lab Equipment | Fisher Scientific

Browse the Fisherbrand portfolio of over 18,000 products including lab equipment, instruments, and consumables, available through the Fisher Scientific channel.

Essentiels de laboratoire et de production | Fisher Scientific

Programmes et ressources Produits Fisher Scientific Edge Expédition le jour même : essentiels de labo et produits chimiques sélectionnés, et beaucoup plus.

Fisher Scientific

Part of Thermo Fisher Scientific | [About Us](#) | [Customer Support](#) | [Help](#) | [Sitemap](#) | [Contact Us](#) | [Website Terms and Conditions](#) | [Sales Terms and Conditions](#) | [Privacy](#)

Fisher Chemical

Explore trusted, reliable Fisher Chemical analytical chemicals for your research or production, including dry reagents, acids, solutions, and solvents.

Contact Us - Fisher Sci

In case of a Chemical Emergency, Thermo Fisher Scientific has an Emergency Response procedure in place to connect you with professionals for spills occurring anywhere in North ...

Thermo Scientific Products | Fisher Scientific

Ethanol, 70% Solution, Molecular Biology Grade, Denatured, Fisher BioReagents™

Incubators | Fisher Scientific

Browse a full range of Incubators products from leading suppliers. Shop now at Fisher Scientific for all of your scientific needs.

SAFETY DATA SHEET - Fisher Sci

Company Importer/Distributor Fisher Scientific 112 Colonnade Road, Ottawa, ON K2E 7L6, Canada
Tel: 1-800-234-7437

Laboratory & Production Essentials | Fisher Scientific

Programs and Resources Fisher Scientific Edge Products Get same-day shipping on select lab essentials, chemicals, and much more.

Products | Fisher Scientific

Convenient access to the most comprehensive offering of laboratory, healthcare, and safety products and services.

Fisherbrand Lab Equipment | Fisher Scientific

Browse the Fisherbrand portfolio of over 18,000 products including lab equipment, instruments, and consumables, available through the Fisher Scientific channel.

Essentiels de laboratoire et de production | Fisher Scientific

Programmes et ressources Produits Fisher Scientific Edge Expédition le jour même : essentiels de labo et produits chimiques sélectionnés, et beaucoup plus.

Fisher Scientific

Part of Thermo Fisher Scientific | About Us | Customer Support | Help | Sitemap | Contact Us | Website Terms and Conditions | Sales Terms ...

Discover the ultimate Fisher Paykel parts diagram for easy repairs and maintenance. Find the parts you need today! Learn more for expert tips and insights.

[Back to Home](#)