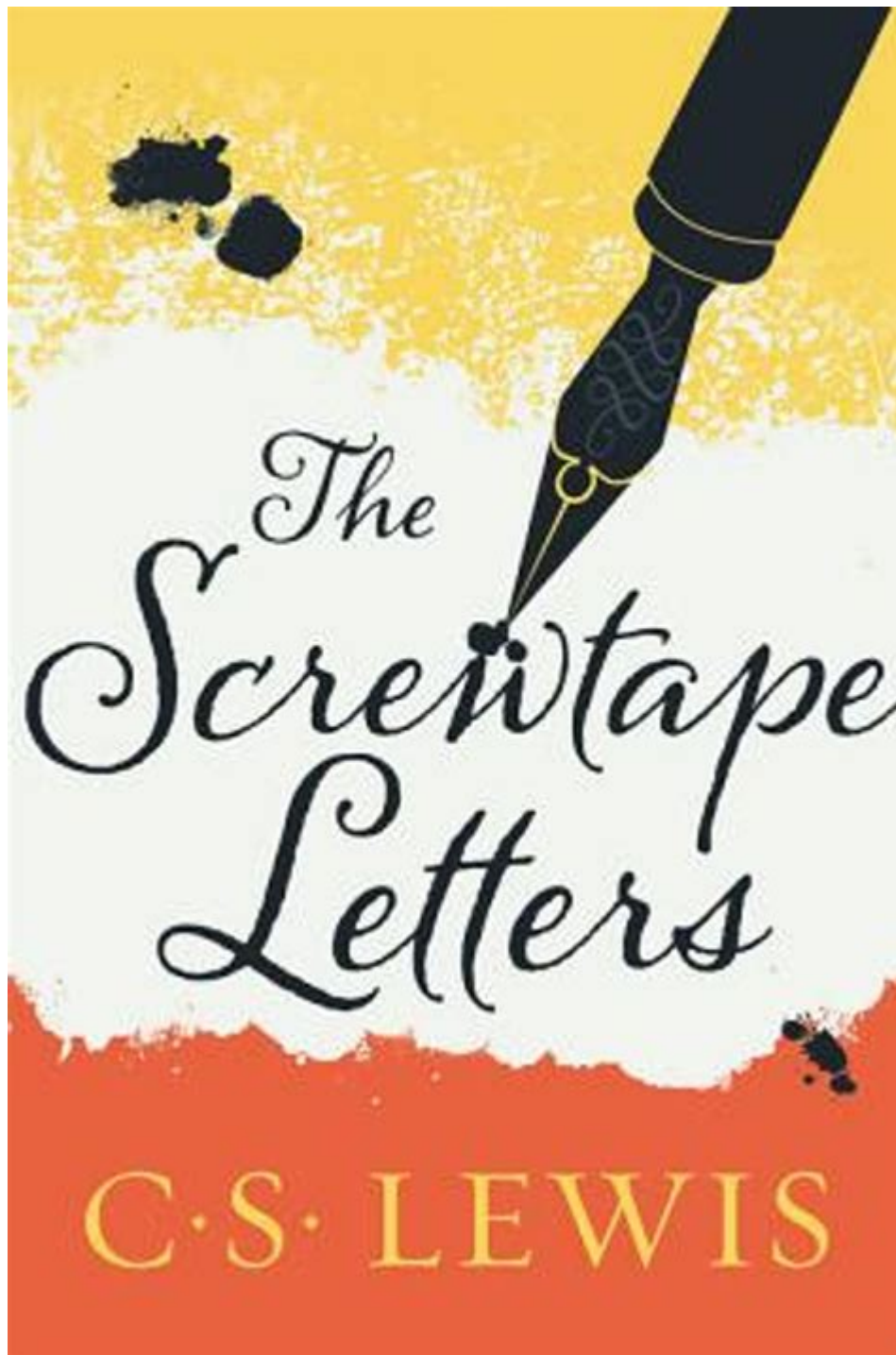


Focus On The Family Screwtape Letters



Focus on the Family Screwtape Letters is a thought-provoking exploration of temptation, faith, and the human experience as seen through the lens of C.S. Lewis's classic work, "The Screwtape Letters." This book, originally published in 1942, presents a fictional correspondence between a senior demon, Screwtape, and his nephew, Wormwood, who is tasked with leading a human away from God. In the context of family, the principles and insights from "The Screwtape Letters" offer a unique perspective on the challenges that families face in maintaining a strong spiritual foundation amid modern distractions and temptations.

The Foundation of "The Screwtape Letters"

C.S. Lewis's "The Screwtape Letters" is structured as a series of letters written by Screwtape, a demon who advises his nephew Wormwood on how to tempt a human referred to as "the Patient." The letters are rich with theological insights and observations about human nature, providing a satirical yet serious commentary on the spiritual battles that individuals face.

The Context of Family in the Letters

In the context of family, Lewis's work highlights several critical themes relevant to contemporary family dynamics:

1. **Distraction and Discontent:** Families today often face numerous distractions, from technology to societal pressures, that can lead to discontent. Screwtape advises Wormwood to keep the Patient preoccupied with trivial matters to divert his attention from spiritual growth.
2. **Unity and Division:** Screwtape emphasizes the importance of creating division within relationships. Families must be vigilant against resentment and misunderstandings that can arise from everyday interactions.
3. **Moral Relativism:** The letters underscore the subtlety of moral decay. Families are encouraged to uphold moral standards and teach their children the importance of a clear moral compass.
4. **The Importance of Community:** Lewis illustrates how isolation can weaken an individual's faith. Families are encouraged to foster community ties and engage in communal worship as a way to strengthen their spiritual foundation.