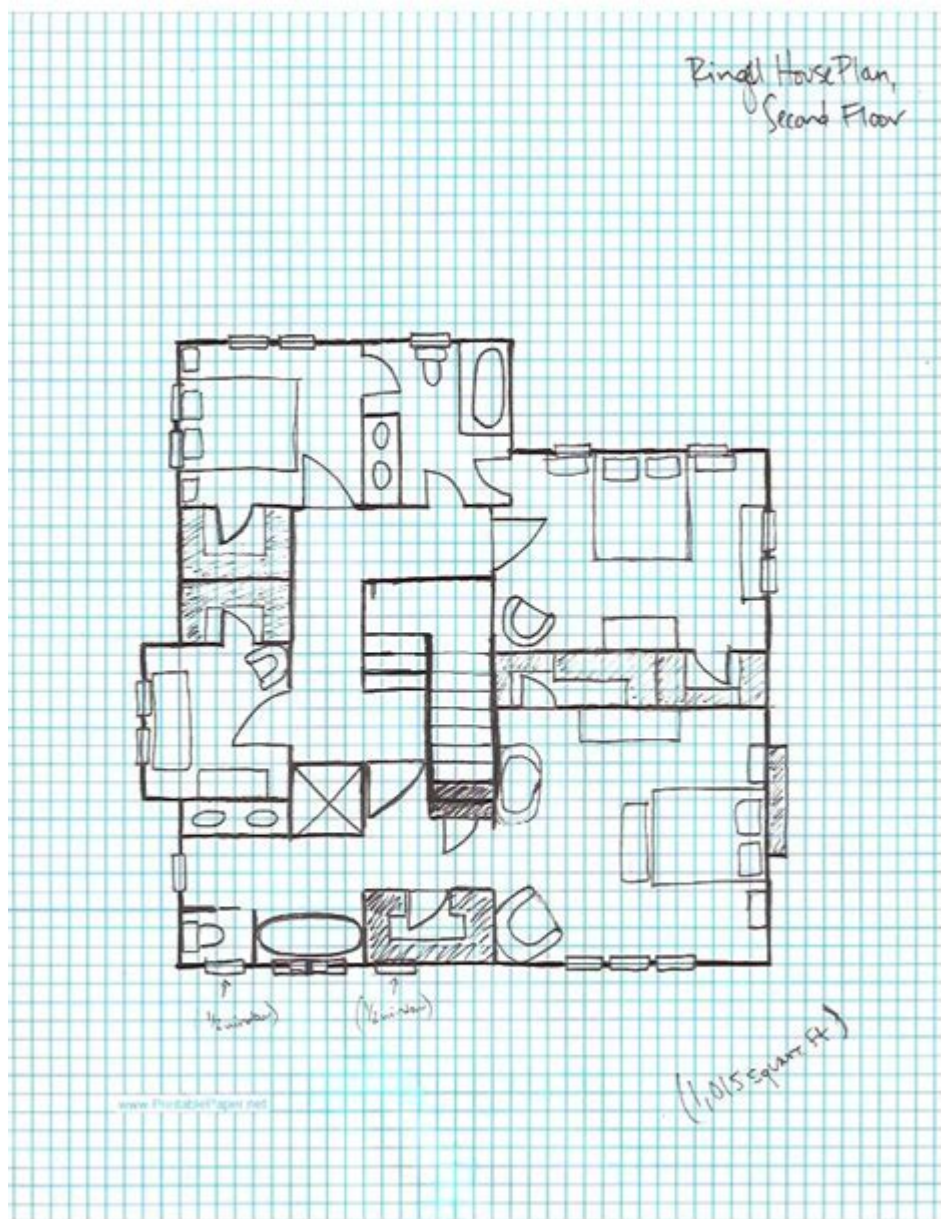


Floor Plans Using Grid Paper



Floor plans using grid paper are an excellent way for architects, designers, and homeowners to visualize and plan spaces. This hands-on approach allows individuals to create precise layouts for rooms, furniture arrangement, and overall design aesthetics. With the increasing popularity of DIY projects and home renovations, understanding how to create effective floor plans on grid paper can be a valuable skill for anyone interested in home improvement or design.

What is Grid Paper?

Grid paper, also known as graph paper, features a series of intersecting horizontal and vertical lines that create a grid. This grid allows for consistent spacing and scaling, making it an ideal medium for drafting floor plans. The squares on grid paper can represent various units of measurement, such as inches or feet, allowing for accurate representation of dimensions.

Advantages of Using Grid Paper for Floor Plans

Creating floor plans using grid paper offers several benefits:

1. **Precision and Accuracy:** The grid helps maintain scale and proportion, ensuring that measurements are consistent across the plan.
2. **Ease of Use:** Grid paper is readily available and inexpensive, making it accessible for anyone looking to draft a floor plan.
3. **Visual Clarity:** The clear layout provided by the grid enhances the visual representation of the space, aiding in design decisions.
4. **Flexibility:** Users can easily make modifications, whether it's adjusting room sizes or rearranging furniture.

Essential Tools for Creating Floor Plans

To create effective floor plans on grid paper, you'll need the following tools:

- **Graph Paper:** Choose the appropriate size of grid paper based on the scale you want to use. Common sizes include 1/4 inch squares or 1/2 inch squares.
- **Pencil and Eraser:** A pencil allows for easy corrections, while an eraser helps clean up any mistakes.
- **Ruler:** A ruler ensures that lines are straight and measurements are accurate.
- **Colored Pencils or Markers:** These can be used to differentiate between various elements of the floor plan, such as walls, furniture, and fixtures.
- **Measuring Tape:** For accurate measurements of the actual space you are designing.

Steps to Create a Floor Plan Using Grid Paper

Creating a floor plan using grid paper can be broken down into several manageable steps:

1. Measure Your Space

Before you start drawing, it's crucial to gather accurate measurements of the space you want to design. Use a measuring tape to determine:

- The length and width of each room
- The location of doors and windows
- Any built-in features like cabinets or fireplaces

2. Determine the Scale

Decide on a scale to use for your floor plan. A common scale is 1 square = 1 foot, but you can adjust this based on the size of your space and the grid paper you are using. Make sure to keep the scale consistent throughout your drawing.

3. Draw the Outline

Using your measurements and the determined scale, draw the outline of each room on the grid paper. Start with the largest room and work your way to smaller areas. Make sure to include:

- Walls
- Doors (indicate the swing direction)

- Windows

4. Add Interior Features

Once the basic outline is complete, start adding interior features such as:

- Furniture: Draw each piece to scale, keeping in mind the layout and flow of the space.
- Fixtures: Include sinks, toilets, and other built-in elements that will impact the design.

5. Label Each Element

To keep your floor plan organized, label each room and major feature. This can help differentiate spaces and clarify the purpose of each area. For example, you could use labels like "Living Room," "Dining Area," or "Kitchen."

6. Review and Revise

Take a moment to step back and review your floor plan. Consider the following:

- Is there enough space for movement and flow?
- Are the furniture arrangements functional?
- Do the dimensions match your measurements?

Make any necessary adjustments, erasing and redrawing as needed.

Tips for Enhancing Your Floor Plan

To create a more effective floor plan, consider these additional tips:

- Use Color Coding: Different colors can help distinguish between various functions or areas, making the plan easier to understand at a glance.
- Experiment with Layouts: Don't hesitate to try out multiple arrangements for furniture or room layouts. Grid paper makes it easy to experiment without committing to a specific design.
- Include Dimensions: Adding dimensions to your floor plan can be helpful for future reference and when purchasing furniture.
- Incorporate Traffic Flow: Think about how people will move through the space. Ensure that pathways are clear and that furniture does not obstruct movement.

Common Mistakes to Avoid

When creating floor plans on grid paper, be mindful of these common pitfalls:

- Ignoring Scale: It's essential to maintain the scale throughout your drawing. Failing to do so can lead to inaccurate representations of space.
- Overcrowding Spaces: Make sure to leave enough room for movement and avoid cramming too much furniture into a small area.
- Neglecting Functionality: While aesthetics are important, consider how the space will be used. Ensure the layout supports practical use.

Conclusion

Creating floor plans using grid paper is a practical and rewarding skill for anyone interested in home design or DIY projects. This method allows for precise measurements, easy modifications, and a clear visual representation of spaces. By following the outlined steps and tips, you can develop effective floor plans that help bring your design visions to life. Whether you're renovating an existing space or planning a new home, grid paper can be an invaluable tool in your design toolkit.

Frequently Asked Questions

What are the benefits of using grid paper for designing floor plans?

Using grid paper for designing floor plans allows for precise measurements, easy scaling, and a clear representation of spatial relationships, making it easier to visualize the layout.

How do I start creating a floor plan on grid paper?

Begin by determining the dimensions of the space you want to plan. Use a scale (e.g., 1 square = 1 foot) to draw the outline of the walls, then add doors, windows, and furniture according to the scale.

What tools do I need besides grid paper to create an effective floor plan?

In addition to grid paper, you may need a ruler, a pencil or pen, an eraser, and possibly colored pencils to differentiate between various elements like walls, furniture, and fixtures.

Can I use grid paper for both residential and commercial floor plans?

Yes, grid paper can be used for both residential and commercial floor plans. The same principles apply, though commercial plans may require more complex layouts and considerations for foot traffic and zoning.

Are there any common mistakes to avoid when drawing floor plans on grid paper?

Common mistakes include not using a consistent scale, forgetting to account for door swings and furniture dimensions, and making the layout too cramped. Always double-check measurements and spacing.

Find other PDF article:

<https://soc.up.edu.ph/43-block/Book?dataid=Whp40-1906&title=nihss-stroke-scale-test-a-answers.pdf>

Floor Plans Using Grid Paper

floor division (//)int ()math.floor ()...

Dec 14, 2022 · `int_1 / 2` `float` ()15 ...

c# - *teratail*...

Apr 7, 2019 · `Math.floor` ...

accessceiling / floor - teratail...

Mar 4, 2017 · Access2016Excel excelCEILINGFLOOR ...

C...

Jun 23, 2020 · C1972AT&TB ...

PostgreSQL...

Sep 4, 2017 · `8KB × ceil (/ floor (floor (8KB × fi`

...

May 21, 2018 · `Math.Floor` ... `Math.Round` ... `Mode` ...

c++ - *teratail*...

Mar 8, 2021 · `fixed` `scientific` `defaultfloat` ...

...

Sep 14, 2021 · `console.log ((Math.floor (Math.random ()*26)));` `025` ...

GCC"undefined reference to 'main' "...

May 6, 2021 · ### - ...

SQLSERVERROUND...

Feb 26, 2018 · `Round ()` IT ...

floor division (//)int ()math.floor ()...

Dec 14, 2022 · `int_1 / 2` `float` ()15 ...

c# - *teratail*...

Apr 7, 2019 · `Math.floor` ...

access ceiling / floor - teratail

Mar 4, 2017 · Access2016 Excel 2016 excel CEILING FLOOR

C

Jun 23, 2020 · C 1972 AT&T B C ...

PostgreSQL

Sep 4, 2017 · 8KB × ceil (/ floor
(floor (8KB × fi

"Create stunning floor plans using grid paper with our easy guide. Explore tips

[Back to Home](#)