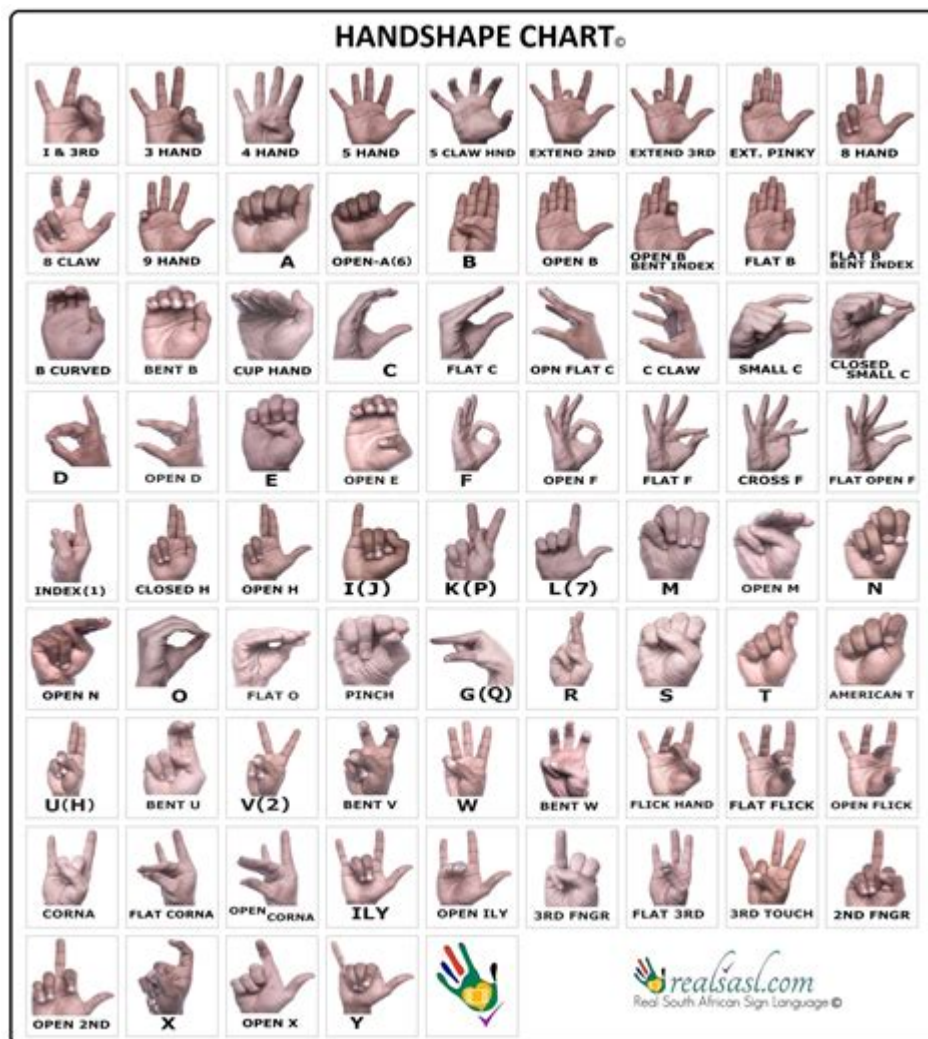


# Finger To Palm Sign Language Meaning



**Finger to palm sign language meaning** is an essential aspect of sign language communication, particularly within the Deaf community. Understanding the significance of various signs enhances not only the ability to communicate effectively but also fosters deeper connections between individuals who use sign language. In this article, we will explore the meaning of the finger to palm sign, its usage in various contexts, and tips for effectively incorporating it into your sign language vocabulary.

## What is Sign Language?

Sign language is a visual means of communication that employs hand gestures, facial expressions, and body language to convey meaning. It is used primarily by the Deaf and Hard of Hearing communities, but it can also be beneficial for hearing individuals in various situations, such as communicating with someone who is non-verbal.

# The Importance of Learning Sign Language

Learning sign language can be incredibly rewarding. Some benefits include:

- **Enhanced Communication:** Sign language allows for effective communication with deaf individuals, breaking down barriers.
- **Cultural Understanding:** Engaging with the Deaf community fosters respect and awareness of their culture and experiences.
- **Cognitive Benefits:** Learning a new language, including sign language, can improve cognitive abilities and memory.
- **Inclusivity:** Knowledge of sign language promotes inclusivity and accessibility in social settings.

## Understanding the Finger to Palm Sign

The finger to palm sign is used in various sign languages, including American Sign Language (ASL) and British Sign Language (BSL). This sign can represent different meanings depending on the context in which it is used.

### Common Meanings of the Finger to Palm Sign

#### 1. Asking for Silence:

The finger to palm sign is often used to ask someone to be quiet or to indicate that quietness is required in a specific setting. The gesture involves placing a finger in front of the mouth while the palm faces outward, a universal sign for silence.

#### 2. Indicating a Request or Command:

In certain contexts, the finger to palm sign can serve as a request or command. This usage emphasizes the importance of the message being conveyed and signifies that the speaker expects compliance or attention.

#### 3. Expressing Agreement or Understanding:

The finger to palm sign may also signify agreement or understanding, particularly in a discussion. This use emphasizes that the signer acknowledges the point being made, showing that they are engaged in the conversation.

#### 4. Symbolizing Connection:

In a more abstract sense, the finger to palm sign can represent the connection between thoughts and feelings. It embodies the idea that ideas (represented by the finger) should be grounded in reality (represented by the palm).

# How to Perform the Finger to Palm Sign

To effectively use the finger to palm sign, follow these simple steps:

## 1. Position Your Hand Correctly:

Start by raising your dominant hand with your palm facing outward. Your fingers should be held together and straight.

## 2. Use Your Finger:

Extend your index finger from your dominant hand and bring it towards the palm of your non-dominant hand, which should be held steady in front of you.

## 3. Facial Expressions Matter:

Incorporate appropriate facial expressions to convey the intended meaning. For example, frowning slightly can indicate a request for silence, while nodding can show understanding.

## 4. Practice Consistently:

Repetition and practice are key to mastering any sign. Try using the finger to palm sign in different contexts to ensure you feel comfortable and confident.

# Contexts Where the Finger to Palm Sign is Useful

Understanding when to use the finger to palm sign can enhance its effectiveness. Here are some contexts where this sign may be particularly useful:

- **In Classrooms:** Teachers can use the sign to ask students for silence or to indicate that they should pay attention.
- **During Meetings:** Professionals can use the sign to respectfully remind others to be quiet or to indicate agreement with a point being made.
- **In Social Settings:** Friends and family can use the sign to ask for silence in noisy environments, such as restaurants or parties.
- **In Public Spaces:** The sign can be used to communicate effectively in places where speaking may not be appropriate, like libraries or during performances.

# Tips for Learning Sign Language

To become proficient in sign language, consider the following tips:

## 1. Take a Class:

Enroll in a local sign language class or find online resources that offer structured lessons.

## 2. Practice with Others:

Engage with friends or family members who are also learning sign language to practice together.

## 3. Use Online Resources:

Websites, apps, and social media platforms dedicated to sign language can provide valuable resources and community support.

## 4. Watch Videos:

Observe native signers on platforms like YouTube to learn correct techniques and nuances of sign language.

## 5. Attend Deaf Events:

Participate in Deaf community events to immerse yourself in the culture and practice your skills in real-life situations.

# Conclusion

The **finger to palm sign language meaning** is a versatile gesture that serves various purposes, from asking for silence to expressing agreement. By understanding its meanings and contexts, you can enhance your sign language skills and effectively communicate with the Deaf community. Incorporating the finger to palm sign into your vocabulary not only facilitates better understanding but also promotes inclusivity and connection with others. Whether you are a beginner or looking to refine your skills, the journey of learning sign language can be both fulfilling and enriching.

# Frequently Asked Questions

## What does the finger to palm sign language gesture represent?

The finger to palm gesture typically represents the concept of 'stop' or 'halt' in sign language.

## Is the finger to palm gesture used in different sign languages?

Yes, the finger to palm gesture can have similar meanings across various sign languages, but the context may vary.

## How do you perform the finger to palm sign correctly?

To perform the finger to palm sign, extend one arm with fingers pointing upward and bring your palm towards the fingers, creating a stopping motion.

## Can the finger to palm sign mean something different in other contexts?

Yes, in some contexts, it may indicate a request for silence or to pause a conversation.

## What is the significance of hand shapes in sign language?

Hand shapes, including the finger to palm gesture, are crucial as they convey specific meanings and emotions in sign language.

## Is the finger to palm gesture universal in sign languages?

No, while it is common, the exact meaning and usage can differ by culture and sign language.

## Are there variations of the finger to palm sign in different regions?

Yes, variations may exist based on regional dialects and local sign language usage.

## What are other common signs related to the finger to palm gesture?

Other common signs include 'slow down', 'please wait', and 'calm down', which can involve similar hand movements.

## How can I learn more about sign language gestures like finger to palm?

You can learn more through online courses, sign language classes, or resources from organizations dedicated to deaf education.

Find other PDF article:

<https://soc.up.edu.ph/46-rule/pdf?trackid=TTc60-5218&title=personal-swot-analysis-opportunities-examples.pdf>

## Finger To Palm Sign Language Meaning

finger -

finger thumb 1 finger= / sometimes also including the thumb finger=

finger= sometimes also including the thumb finger=



singer finger g -

finger finger g NG-coalescence /'fi ɪg ə/ angleEnglishlinger

Finger pro -

fingerfinger finger N7N7

Finger pro -

FingerFinger

Finger -

0 51 ICP 110745 ICP 13052560 - 1 11010802020088 11220250001 [2022]2674-081

[It's finger lickin' good!]

2011 1

Finger -

Jun 6, 2025 2.0 1

Unlock the meaning of the finger to palm sign language! Discover how this gesture communicates effectively in ASL. Learn more about its significance today!

[Back to Home](#)