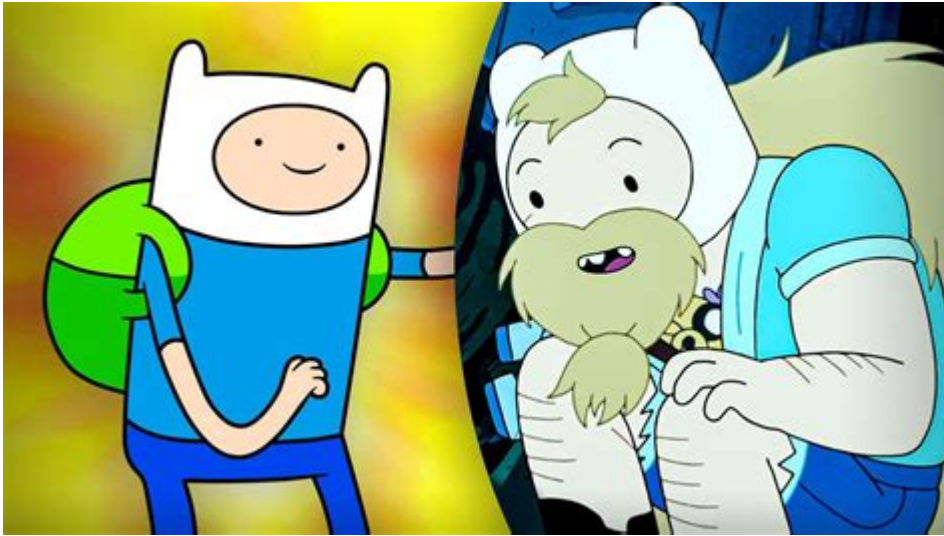


# Finn Off Of Adventure Time



**Finn** the Human is one of the most beloved characters from the animated television series "Adventure Time," created by Pendleton Ward. The show, which aired from 2010 to 2018, captured the hearts of audiences with its imaginative storytelling, quirky humor, and deep emotional undertones. Finn, the show's main protagonist, embodies the spirit of adventure, friendship, and the quest for identity. This article delves into Finn's character, his relationships, his adventures, and the overarching themes he represents throughout the series.

## Character Overview

Finn Mertens is introduced as a young boy living in the Land of Ooo, a post-apocalyptic world filled with magical creatures and surreal landscapes. He is characterized by his vibrant personality, boundless energy, and a strong sense of justice. Finn's appearance is iconic, featuring his signature blue shirt, denim shorts, and a green backpack, often accompanied by his magical sword, the Finn Sword, or sometimes the more powerful Grass Sword.

## Personality Traits

Finn's personality is multifaceted, showcasing a mix of bravery, innocence, and maturity. Here are some notable traits:

- **Courageous:** Finn regularly embarks on dangerous quests, often confronting formidable foes to protect his friends and the inhabitants of Ooo.
- **Compassionate:** He shows a deep empathy for others, often going out of his way to help those in need.
- **Adventurous:** Finn possesses an insatiable curiosity and a thirst for exploration, driving the

narrative of many episodes.

- **Naive:** Despite his bravery, Finn can be somewhat naive, which often leads him into unexpected predicaments.
- **Growth-Oriented:** Throughout the series, Finn matures significantly, confronting complex issues such as identity, love, and loss.

## Finn's Relationships

Finn's relationships are central to his character development and the series' narrative arc. His interactions with other characters reveal his depth and complexity.

### Jake the Dog

Finn's best friend and adoptive brother, Jake, is a shape-shifting dog with magical powers. Their bond is one of the show's highlights, showcasing themes of loyalty and friendship. Together, they embark on numerous adventures, providing comic relief and wisdom. Jake often acts as a mentor to Finn, offering guidance and a more laid-back perspective on life's challenges.

### Princess Bubblegum

Finn harbors a crush on Princess Bubblegum, the intelligent and resourceful ruler of the Candy Kingdom. Their relationship explores themes of love and friendship, evolving throughout the series. While Finn initially views her as a romantic interest, they develop a deeper bond based on mutual respect and understanding.

### Marceline the Vampire Queen

Marceline is another critical figure in Finn's life. Their friendship illustrates themes of acceptance and emotional support. Finn admires Marceline's strength and creativity, and they share several heartfelt moments throughout the series. Their relationship also highlights Finn's growth as he learns to navigate complex emotions and interpersonal dynamics.

### The Ice King

Finn's relationship with the Ice King is more antagonistic, yet it reveals Finn's capacity for empathy. The Ice King, often portrayed as a villain, has a tragic backstory that resonates with Finn. The series hints at the Ice King's loneliness and yearning for connection, prompting Finn to view him as more than just an adversary.

# Adventures and Quests

Finn's adventures are at the heart of "Adventure Time." Each episode typically features him embarking on quests that range from the absurd to the profound. These adventures often serve as metaphors for personal growth and self-discovery.

## Thematic Elements of Finn's Adventures

Finn's quests are not merely about overcoming obstacles; they often explore deeper themes:

1. **Identity:** Finn grapples with his identity as a human in a world filled with magical beings. His journey involves understanding what it means to be human and finding his place in Ooo.
2. **Friendship:** Many of Finn's adventures emphasize the importance of camaraderie and support. His bonds with Jake, Princess Bubblegum, and other characters illustrate the value of friendship.
3. **Heroism:** Finn embodies the hero's journey, facing moral dilemmas and learning that true heroism often involves compassion and understanding, rather than simply defeating foes.
4. **Growth and Maturity:** Over the course of the series, Finn evolves from a naive boy into a more complex character who faces the realities of love, loss, and responsibility.

## Notable Adventures

Several episodes stand out as defining moments for Finn:

- **"The Enchiridion!":** Finn's quest to obtain the magical book of heroism marks a pivotal moment in his development as a hero.
- **"What Was Missing":** This episode explores themes of friendship and connection, showcasing the importance of emotional bonds.
- **"I Remember You":** A poignant episode that delves into the relationship between Finn and the Ice King, revealing deeper layers of both characters.
- **"Bonnibel Bubblegum":** This episode highlights Finn's growth as he navigates his feelings for Princess Bubblegum while confronting the realities of love.

# Finn's Growth Throughout the Series

As "Adventure Time" progresses, Finn undergoes significant character development. Early in the series, he is portrayed as a carefree and somewhat reckless boy. However, as he faces various challenges, his character becomes more nuanced.

## Key Milestones in Finn's Development

1. Facing the Darkness: Finn encounters numerous villains and dark forces, forcing him to confront his fears and insecurities.
2. Understanding Emotions: His relationships, particularly with Princess Bubblegum and Marceline, help him navigate complex emotions such as love, jealousy, and loss.
3. Accepting Responsibility: As he matures, Finn learns the importance of responsibility and the consequences of his actions, particularly in his role as a hero.
4. Embracing Vulnerability: Finn's journey ultimately leads him to embrace his vulnerabilities, acknowledging that it is okay to feel pain and seek help from loved ones.

## Conclusion

Finn the Human is a character that resonates with audiences of all ages, embodying the spirit of adventure and the complexity of human emotions. His relationships, quests, and growth throughout "Adventure Time" make him a compelling figure in animated storytelling. As the series concludes, Finn's journey leaves a lasting impact, reminding viewers that the true essence of adventure lies not only in the external world but also within oneself. Through Finn, "Adventure Time" explores timeless themes of friendship, identity, and the quest for meaning in a whimsical yet profound narrative.

## Frequently Asked Questions

### Who is Finn the Human in 'Adventure Time'?

Finn the Human is the main protagonist of 'Adventure Time', known for his adventurous spirit, bravery, and desire to help others.

### What is Finn's primary weapon of choice?

Finn primarily wields a sword, which he uses in various battles and adventures throughout the series.

### What is the significance of Finn's hat?

Finn's hat is iconic and symbolizes his adventurous nature; it is a bear-themed hat that he wears throughout most of the series.

## How does Finn's character evolve throughout 'Adventure Time'?

Finn evolves from a naive and impulsive boy into a more mature and responsible hero, grappling with complex emotions and moral dilemmas.

## What are Finn's relationships with other characters like?

Finn has deep friendships with characters like Jake the Dog, Princess Bubblegum, and Marceline the Vampire Queen, showcasing themes of loyalty and love.

## What are some of Finn's notable adventures?

Finn's notable adventures include battling the Ice King, exploring the Land of Ooo, and seeking out the Enchiridion, a magical book.

## Does Finn have any family in 'Adventure Time'?

Finn's family includes his adoptive brother Jake and he also has a biological father, Martin, who is introduced later in the series.

## What are Finn's defining personality traits?

Finn is characterized by his bravery, determination, empathy, and a strong sense of justice, often putting others' needs before his own.

## How does the show address Finn's feelings of loneliness?

The show explores Finn's feelings of loneliness through his adventures and relationships, showing his growth as he learns to connect with others.

## What impact has Finn had on pop culture?

Finn has become a cultural icon, inspiring numerous fan art, merchandise, and discussions about heroism and friendship in animated series.

Find other PDF article:

<https://soc.up.edu.ph/33-gist/pdf?ID=CCx06-6499&title=intravesical-therapy-for-bladder-cancer.pdf>

## Finn Off Of Adventure Time

*finn*????? - ?????

Oct 8, 2021 · Finn [finnegan]???????? Finnegan [finnegan] ?????????? ???? ?????????????????  
?“”” ????·???? ????????? ...

*finn*?????·?????\_?????

Norman Anjou Lancaster York Tudor Stuart

Hannover -Wettiner ...

-

local colorvernacular language ...

-

(Finn Dorset)A ...

### Østre Bærum kirkebøker før 1884, hvor finnes - Users' own forum ...

Nov 26, 2020 · Har litt problemer, hvor kan jeg finne kirkebøker for Østre Bærum før 1884? mvh Finn H Bakken

### (Litt pirk). Finn kilde: Folketeljinga 1960 - Inquiries and messages ...

Jul 17, 2025 · Dersom ein vel kategori -> Folketellinger kjem folketeljinga 1960 opp som eit val, deretter 1920, 1910 osv. Eg antar at dette er ein feil.

-

May 29, 2010 · Adventures of Huckleberry Finn ...

Explore the adventures of Finn off of Adventure Time! Dive into his character development

[Back to Home](#)