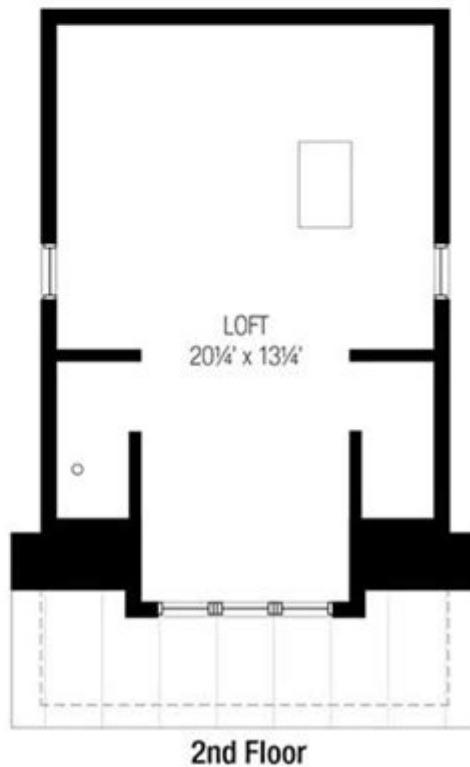


Floor Plans For Small Houses



Floor plans for small houses are an essential consideration for anyone looking to maximize space while maintaining functionality and aesthetic appeal. As urban living becomes increasingly popular, many people find themselves in smaller homes, where every square foot counts. A well-designed floor plan can transform a compact living space into a cozy and efficient home. This article will explore various aspects of floor plans for small houses, including design principles, popular layouts, and tips for optimizing limited space.

Understanding the Importance of Floor Plans

When it comes to designing a small house, the floor plan serves as a blueprint that outlines the arrangement of rooms and the flow of space. A thoughtful floor plan can significantly impact your daily life, affecting everything from how you navigate your home to how you entertain guests. Here are some key reasons why floor plans are crucial:

- **Space Efficiency:** A well-crafted floor plan maximizes usable space, ensuring that every corner serves a purpose.
- **Natural Light:** Strategic room placement can enhance natural light, making spaces feel larger and more inviting.
- **Functional Layout:** A good floor plan promotes an efficient layout that supports your lifestyle and daily activities.
- **Future Flexibility:** A versatile design can adapt to changing needs, such as a growing family or remote work requirements.

Key Design Principles for Small House Floor Plans

Creating an effective floor plan for a small house involves adhering to several design principles. Here are some essential guidelines to consider:

1. Open Concept Living

An open-concept layout merges multiple living areas, such as the kitchen, dining, and living room, into one cohesive space. This design choice not only fosters interaction but also creates an illusion of more space. Consider incorporating features like:

- Large kitchen islands that double as dining areas
- Minimalist furniture that does not obstruct sightlines
- Sliding doors or large windows that connect indoor and outdoor spaces

2. Multi-Functional Spaces

In a small house, every room should serve more than one purpose. For instance, a guest room can also function as a home office. Look for ways to combine functionalities, such as:

- Built-in desks in bedrooms
- Murphy beds that fold away when not in use
- Storage ottomans that can serve as seating and storage

3. Vertical Space Utilization

Don't forget about the vertical dimension when designing a small house. Utilizing wall space can create storage solutions and draw the eye upward, making the space feel larger. Consider:

- Built-in shelves that extend to the ceiling
- Hanging pot racks in the kitchen
- Lofted beds to free up floor space

Popular Floor Plan Layouts for Small Houses

There are several popular floor plan layouts specifically suited for small houses. Here, we will explore three common styles:

1. The Tiny House Concept

Tiny houses typically range from 100 to 400 square feet and are designed for those seeking a minimalist lifestyle. The floor plan often includes:

- A combined living area with a small kitchen and dining space
- A lofted sleeping area
- A compact bathroom

This layout maximizes space and encourages a simpler way of living.

2. The Bungalow Style

Bungalows are characterized by their single-story layout and easy accessibility. Common features include:

- A front porch that extends the living space outdoors

- Open living and dining areas
- Two or three bedrooms arranged around a central hallway

This layout is perfect for families or individuals who prefer a cozy and functional home.

3. The Split-Level Design

Split-level houses offer a unique approach to small house living by utilizing multiple levels to create defined spaces. Typically, this design includes:

- A living room on one level, with a few steps leading up to the bedrooms
- A lower level that can be used for a family room or office
- A compact kitchen and dining area

This layout creates distinct zones while maintaining an overall sense of openness.

Tips for Optimizing Small House Floor Plans

When designing a floor plan for a small house, several strategies can help you maximize space and functionality:

1. Prioritize Natural Light

Maximizing natural light can make a small space feel larger and more welcoming. Consider incorporating:

- Large windows and glass doors
- Skylights to brighten up darker areas
- Light-colored walls and furnishings to reflect light

2. Choose Scalable Furniture

Selecting furniture that can adapt to your needs is crucial in a small house. Look for:

- Foldable tables and chairs that can be stored away when not in use
- Modular sofas that can be reconfigured
- Storage beds that provide additional space

3. Embrace Minimalism

A minimalist approach can enhance the sense of space in your home. To achieve this, consider:

- Decluttering regularly to keep only essential items
- Using a monochromatic color palette to create a sense of cohesion
- Limiting decorative items to a few meaningful pieces

Conclusion

Floor plans for small houses play a crucial role in creating a functional and appealing living environment. By understanding the importance of space optimization, adhering to key design principles, and exploring popular layouts, homeowners can create a small house that feels spacious and welcoming. With thoughtful planning and creative solutions, even the tiniest of homes can provide comfort, style, and a sense of belonging. Whether you are building from scratch or renovating an existing space, remember that a well-designed floor plan is the foundation of your dream small house.

Frequently Asked Questions

What are the benefits of using open floor plans in small houses?

Open floor plans in small houses can create a sense of spaciousness, improve natural light flow, and enhance social interactions by connecting living, dining, and kitchen areas.

How can I maximize storage in a small house floor plan?

To maximize storage, consider utilizing vertical space with tall cabinets, incorporating built-in furniture, and using under-stair storage solutions.

What is a typical size for a small house floor plan?

A small house floor plan generally ranges from 400 to 1,200 square feet, depending on the design and number of occupants.

What layout works best for a small family in a compact house?

A layout with a combined living-dining area, separate bedrooms, and a multi-functional space like a home office or playroom can work well for small families.

How can I create the illusion of more space in a small house?

Using light colors, mirrors, and strategic lighting can create the illusion of more space, along with selecting furniture that is appropriately scaled to the room.

What are some popular small house floor plan styles?

Popular styles include modern, minimalist, cottage, and tiny house designs, each offering unique features tailored to small living.

Can I modify an existing floor plan for my small house?

Yes, existing floor plans can often be modified to better fit your needs, such as altering room sizes or adding walls for privacy.

What are some energy-efficient features to include in a small house floor plan?

Incorporating features like energy-efficient windows, proper insulation, and solar panels can enhance energy efficiency in small house floor plans.

How do I choose the right floor plan for my lifestyle?

Consider your daily activities, family size, and future needs when choosing a floor plan; prioritize spaces that enhance your lifestyle and comfort.

What are the best materials for building small house floor plans?

Lightweight and sustainable materials like wood, metal, and recycled materials are often best for small house construction, balancing durability and aesthetics.

Find other PDF article:

<https://soc.up.edu.ph/40-trend/pdf?dataid=ZAj61-5860&title=mcdonalds-pos-training-simulator-game.pdf>

Floor Plans For Small Houses

[floor division \(//\) int \(\) math.floor \(\)](#)

Dec 14, 2022 · `int_1 / 2` float (int) 15 ...

[c# - teratail](#)

Apr 7, 2019 · `Math.floor` ...

[access ceiling / floor - teratail](#)

Mar 4, 2017 · Access2016 Excel excel CEILING FLOOR ...

[C - teratail](#)

Jun 23, 2020 · C1972 AT&T B C ...

[PostgreSQL - teratail](#)

Sep 4, 2017 · `8KB × ceil (/ floor (floor (8KB × fi`

[Math.Floor - teratail](#)

May 21, 2018 · `Math.Floor` ... `Math.Round` ... `Mode` ...

[c++ - teratail](#)

Mar 8, 2021 · (fixed) (scientific) defaultfloat ...

[console.log \(\(Math.floor \(Math.random \(\)*26\)\)\); 025 - teratail](#)

Sep 14, 2021 · `console.log ((Math.floor (Math.random ()*26)));` 025 "a" ...

[GCC "undefined reference to 'main' " - teratail](#)

May 6, 2021 · ### - C ...

[SQLSERVER ROUND - teratail](#)

Feb 26, 2018 · `Round ()` IT 0.5 ...

[floor division \(//\) int \(\) math.floor \(\)](#)

Dec 14, 2022 · `int_1 / 2` float (int) 15 ...

[c# - teratail](#)

Apr 7, 2019 · `Math.floor` ...

[access ceiling / floor - teratail](#)

Mar 4, 2017 · Access2016Excel

C

Jun 23, 2020 · C1972AT&T B

PostgreSQL

Sep 4, 2017 · 8KB × ceil

Explore creative floor plans for small houses that maximize space without sacrificing style. Discover how to optimize your home design today!

[Back to Home](#)