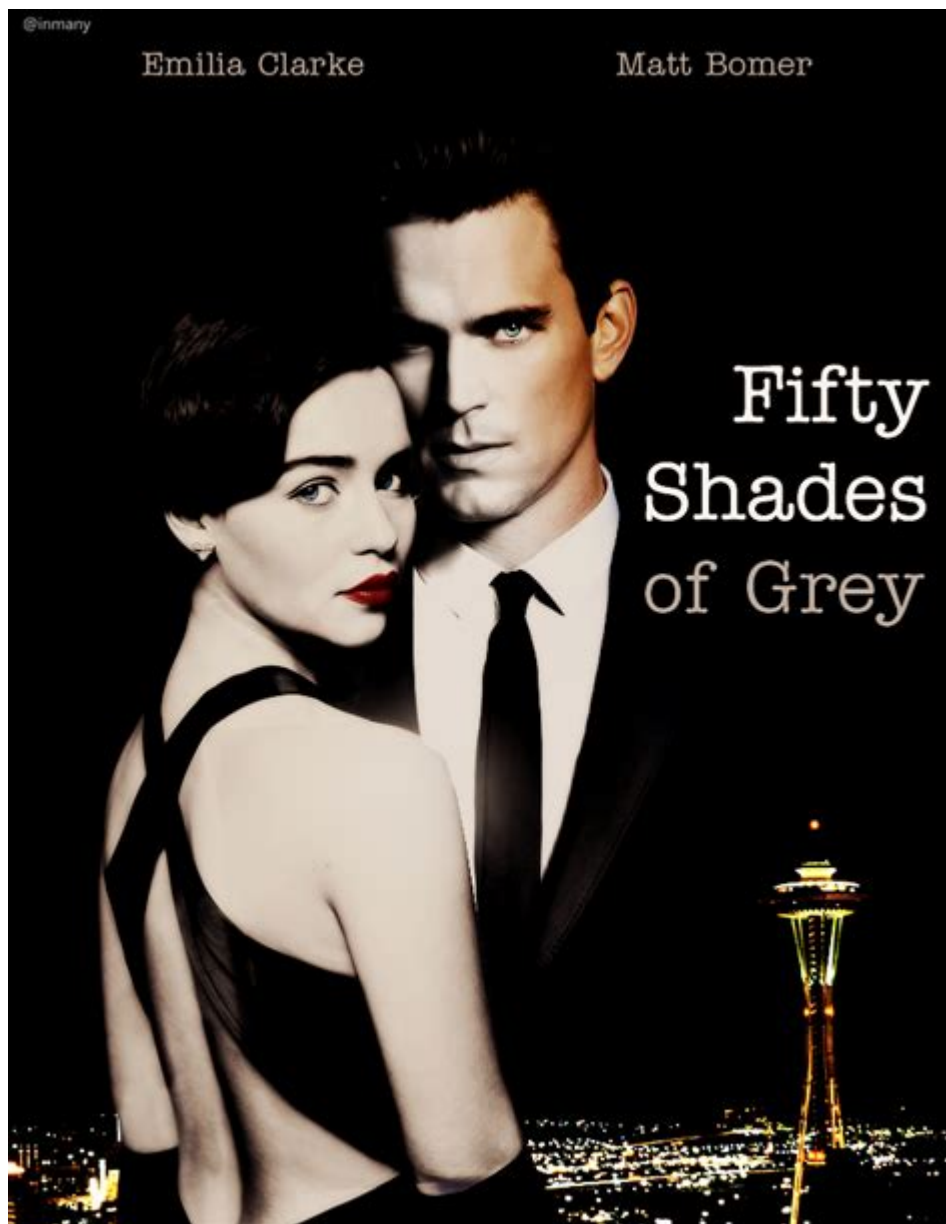


# Fifty Shades Of Grey 2nd



Fifty Shades of Grey 2nd is not just a continuation of a popular narrative but also a deeper exploration of the complexities of love, power dynamics, and personal growth. As fans of the original trilogy eagerly anticipated this sequel, it became essential to delve into its themes, characters, and the impact it has on its audience. This article will unpack the elements that make Fifty Shades of Grey 2nd compelling, examining its narrative structure, character development, and societal implications.

## Overview of the Fifty Shades Franchise

The Fifty Shades franchise began with E.L. James's debut novel, which quickly became a global phenomenon. The first book, Fifty Shades of Grey, introduced

readers to the tumultuous relationship between Anastasia Steele and Christian Grey. Following the immense success of the first book, sequels and a film adaptation followed, creating a cultural wave that many still discuss today.

Key points about the franchise:

1. Themes of BDSM: The books brought BDSM into mainstream conversations, exploring the complexities of consent and sexual exploration.
2. Character Dynamics: The central relationship is often described as tumultuous, showcasing a push-and-pull dynamic that keeps readers invested.
3. Cultural Impact: The series sparked debates about feminism, romance, and the portrayal of relationships in modern literature.

## **Plot Summary of Fifty Shades of Grey 2nd**

While the specific plot details of Fifty Shades of Grey 2nd may vary depending on interpretations and adaptations, the core narrative continues to revolve around the evolving relationship between Anastasia and Christian. As they navigate their emotional and sexual complexities, the sequel delves into new challenges and deeper character insights.

### **Setting the Scene**

The sequel picks up where the first left off, with Anastasia having made significant life choices that impact her relationship with Christian. The backdrop of Seattle, filled with both opulence and the stark realities of their lives, serves as a critical setting that enhances the storytelling.

### **Character Development**

One of the most significant aspects of Fifty Shades of Grey 2nd is the development of its characters. Both Anastasia and Christian undergo substantial changes as they confront their pasts, insecurities, and desires.

1. Anastasia Steele:
  - Empowerment: In the sequel, Anastasia becomes more empowered, learning to assert her needs and desires.
  - Career Growth: She pursues opportunities in her career, showcasing her independence and ambition.
  - Emotional Struggles: Despite her growth, she grapples with the complexities of her feelings for Christian and her past experiences.
2. Christian Grey:
  - Vulnerability: The sequel reveals more of Christian's vulnerabilities, allowing readers to understand his motivations and fears.

- Growth: He begins to confront his past traumas and work towards a healthier relationship dynamic.
- Commitment Issues: Christian's struggles with commitment and trust are explored, adding depth to his character.

## Themes Explored in the Sequel

Fifty Shades of Grey 2nd is rich with themes that resonate with readers. These themes not only enhance the narrative but also provide a broader commentary on relationships and personal growth.

### Love and Power Dynamics

The relationship between Anastasia and Christian is steeped in themes of power and control. The sequel challenges traditional notions of romance by exploring how love can be both liberating and confining.

- Consent: The importance of consent is a recurring theme as both characters navigate their desires and boundaries.
- Equality in Relationships: The sequel emphasizes the need for balance in power dynamics, showcasing how both characters must learn to compromise and respect each other's autonomy.

### Personal Growth and Healing

Both Anastasia and Christian are on journeys of self-discovery and healing. Their individual growth arcs reflect the challenges of overcoming personal trauma and the importance of support in relationships.

- Therapy and Communication: Characters engage in therapy and open communication, which highlights the importance of addressing mental health in romantic relationships.
- Healing from the Past: The sequel emphasizes the importance of confronting past experiences to move forward, both individually and as a couple.

## Reception and Impact

The release of Fifty Shades of Grey 2nd was met with a mix of anticipation and skepticism. Fans of the original trilogy were eager to see how the characters would evolve, while critics often scrutinized the portrayal of relationships.

# Critical Response

Critical reception of the sequel can be categorized as follows:

- Positive Reviews:
  - Many fans appreciated the deeper exploration of character backgrounds and the evolution of their relationship.
  - The writing style and pacing were praised for keeping readers engaged.
- Negative Reviews:
  - Some critics argued that the themes of control and power were not addressed with enough nuance.
  - The portrayal of BDSM and emotional dynamics faced scrutiny, with calls for more responsible representation.

## Conclusion: The Legacy of Fifty Shades of Grey 2nd

Fifty Shades of Grey 2nd serves as a continuation of a story that has captivated millions. Through its exploration of love, power dynamics, and personal growth, the sequel not only entertains but also provokes thought about the nature of relationships.

As the franchise continues to influence discussions around romance and sexuality, it remains relevant in contemporary literature. The complex characters of Anastasia and Christian will likely resonate with readers for years to come, inviting them to reflect on their own relationships and the myriad shades of human connection.

In a world where discussions about consent, power, and emotional health are increasingly vital, Fifty Shades of Grey 2nd contributes to these conversations, bridging the gap between fantasy and reality. Ultimately, it encourages readers to seek understanding and connection, making it a noteworthy installment in the saga of Fifty Shades.

## Frequently Asked Questions

### What is the primary focus of 'Fifty Shades of Grey 2nd' compared to the first book?

The primary focus of 'Fifty Shades of Grey 2nd' is to delve deeper into the complex relationship dynamics between Christian Grey and Anastasia Steele, exploring themes of trust, intimacy, and personal growth.

## **How does 'Fifty Shades of Grey 2nd' address the character development of Anastasia Steele?**

'Fifty Shades of Grey 2nd' showcases Anastasia's evolution as she gains confidence and assertiveness, learning to navigate her desires and boundaries within her relationship with Christian.

## **What new characters are introduced in 'Fifty Shades of Grey 2nd'?**

The sequel introduces several new characters, including friends and colleagues of both Christian and Anastasia, which add depth to the story and influence their relationship.

## **Are there any significant plot twists in 'Fifty Shades of Grey 2nd'?**

'Fifty Shades of Grey 2nd' features several significant plot twists that challenge the characters' relationship, including unexpected revelations about Christian's past and external conflicts that test their bond.

## **How does the writing style of 'Fifty Shades of Grey 2nd' compare to the first book?**

The writing style in 'Fifty Shades of Grey 2nd' maintains a similar tone to the first book but demonstrates more maturity and depth as the characters face more complex emotional situations.

## **What are some key themes explored in 'Fifty Shades of Grey 2nd'?**

Key themes in 'Fifty Shades of Grey 2nd' include power dynamics, the importance of communication in relationships, the impact of past trauma, and the journey towards self-acceptance.

## **Is 'Fifty Shades of Grey 2nd' suitable for all audiences?**

'Fifty Shades of Grey 2nd' contains mature themes and explicit content, making it suitable primarily for adult audiences and those comfortable with erotic literature.

## **How does the sequel explore the concept of consent?**

'Fifty Shades of Grey 2nd' places a strong emphasis on the concept of consent, showing how Christian and Anastasia navigate their desires while ensuring mutual respect and understanding in their relationship.

Find other PDF article:

<https://soc.up.edu.ph/43-block/files?docid=VMc73-3744&title=nebraska-real-estate-practice-exam.pdf>

## Fifty Shades Of Grey 2nd

五十五 - 五十六

51 fifty-first 52 fifty-second 53 fifty-third 54 fifty-fourth 55 fifty-fifth 56 fifty-sixth 57 fifty-seventh 58 fifty-eighth 59 fifty-ninth 60 sixtieth 100 ...

五十六 - 五十七

Mar 26, 2023 · Naughty Bounce Naughty Bounce Naughty Bounce Wu ...

ABAQUS DISPLACEMENT INCREMENT FOR ...

ABAQUS DISPLACEMENT INCREMENT FOR CONTACT IS TOO BIG, 1. ... 2. ...

100 - 101

100 101 102 103 104 105 106 107 108 109 110 111 112 113 114 115 116 117 118 119 120

first second third fourth fifth sixth seventh eighth ninth tenth eleventh twelfth thirteenth fourteenth fifteenth sixteenth ...

fifteen fifty - 100

Jul 29, 2021 · 2011 1 ...

100? - 101

Oct 17, 2024 · “USD” “30 USD” “USD 30” 1250 ...

1.5 one pound fifty

Nov 10, 2010 · 1.5 one pound fifty 1. one fifty pounds 2. one pound fifty per ...

1-100

1-100 1 one 2 two 3 three 4 four 5 five 6 six 7 seven 8 eight 9 nine 10 ten 11 eleven 12 twelve 13 thirteen 14 fourteen 15 fifteen 16 sixteen 17 seventeen 18 eighteen 19 ...

100 - 101

thirty forty fifty sixty seventy eighty ninety One Hundred One Thousand one two three four five six seven eight nine ten eleven twelve ...

Five Hundred Miles

Five Hundred Miles Carey Mulligan/Stark Sands/Justin Timberlake Carey Mulligan/Stark Sands/Justin Timberlake The ...

五十一 - 五十四

51 fifty-first52 fifty-second53 fifty-third54 fifty-fourth55 fifty-fifth 56 fifty-sixth57 fifty-seventh58 fifty-eighth59 fifty-ninth60 sixtieth 五十一 五十二 五十三 五十四 五十五 五十六 五十七 五十八 五十九 六十

五十一 - 五十四

Mar 26, 2023 · Naughty Bounce Naughty Bounce Wu groove room Fifty you better move Ya Give me Chain Know me Ya ...

ABAQUS DISPLACEMENT INCREMENT FOR ...

ABAQUS DISPLACEMENT INCREMENT FOR CONTACT IS TOO BIG, 1. 2. 3.

100 -

100 100 100 20

first second third fourth fifth sixth seventh eighth ninth tenth eleventh twelfth thirteenth fourteenth fifteenth sixteenth seventeenth eighteenth

fifteen fifty -

Jul 29, 2021 · 2011 1 ...

? -

Oct 17, 2024 · “USD” “30 USD” “USD 30” 1250 “USD 1,250” “1,250 USD”

1.5 one pound fifty

Nov 10, 2010 · 1.5 one pound fifty 1. one fifty pounds 2. one pound fifty per hour/day...

1-100

1-100 1 one 2 two 3 three 4 four 5 five 6 six 7 seven 8 eight 9 nine 10 ten 11 eleven 12 twelve 13 thirteen 14 fourteen 15 fifteen 16 sixteen 17 seventeen 18 eighteen 19 nineteen 20 two

100 -

thirty forty fifty sixty seventy eighty ninety One Hundred One Thousand one two three four five six seven eight nine ten eleven twelve thirteen fourteen fifteen sixteen seventeen eighteen nineteen twenty twenty-one twenty-two twenty-three twenty-four twenty-five twenty-six ...

Five Hundred Miles

Five Hundred Miles Carey Mulligan/Stark Sands/Justin Timberlake Carey Mulligan/Stark Sands/Justin Timberlake The Journeyman

Dive into the intrigue of 'Fifty Shades of Grey 2nd' as we explore its themes

[Back to Home](#)