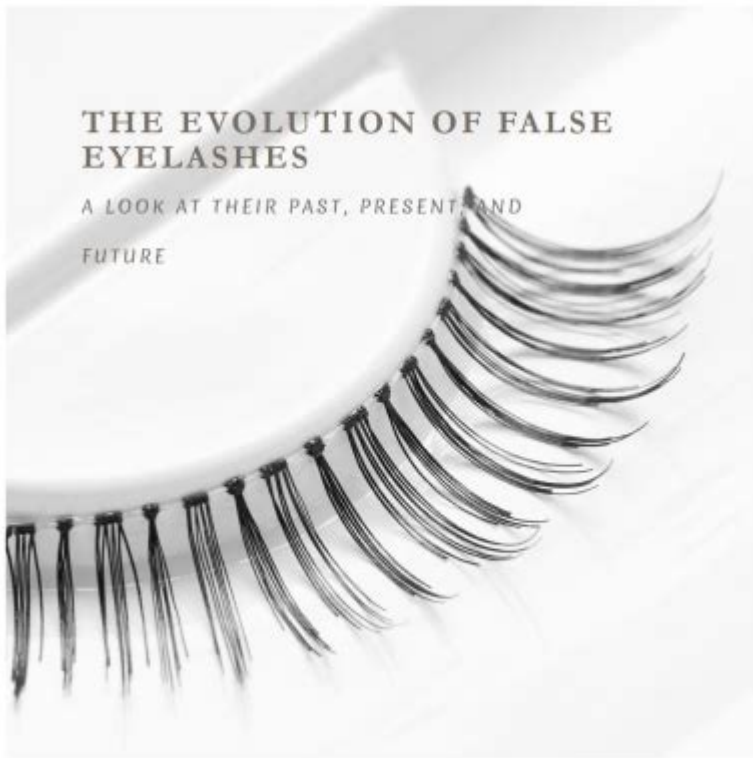


False Eyelashes History Cumbrella



False eyelashes history cumbrella spans centuries and showcases the evolving beauty standards and technological advancements in the cosmetic industry. From ancient civilizations to modern-day fashion runways, false eyelashes have transformed into a staple for enhancing one's natural beauty. This article will explore the fascinating journey of false eyelashes, their cultural significance, and the innovations that have led to their popularity today.

Early Beginnings of False Eyelashes

The history of false eyelashes can be traced back to ancient times, where beauty practices were an integral part of various cultures. The use of eyelash enhancements dates back thousands of years.

Ancient Civilizations

1. Egypt: Ancient Egyptians were among the first to use cosmetic enhancements, including false eyelashes. They believed that long, thick lashes were associated with beauty and divinity. Eyelashes made from materials such as animal hair or plant fibers were often used, and women applied kohl to their eyes, enhancing the dramatic effect of their lashes.

2. Greece and Rome: The Greeks and Romans also placed significant importance on eye beauty. They used various substances to darken their lashes, including soot and other natural dyes. Although the concept of false eyelashes was not prevalent, these civilizations laid the groundwork for future beauty practices.

Middle Ages to the Renaissance

During the Middle Ages, beauty standards shifted, and women began to focus on a more natural appearance. However, the Renaissance period saw a resurgence in the use of cosmetics. Eyelashes became a symbol of femininity, and women started using natural substances like beeswax and resin to enhance their eyelashes.

The Birth of Modern False Eyelashes

The modern era of false eyelashes began in the early 20th century, marking a significant transition in beauty standards.

Hollywood Influence

The first recorded instance of false eyelashes in the modern sense occurred in 1916 when film director D.W. Griffith created a pair of false lashes for actress Seena Owen for his film "Intolerance." The lashes were made from human hair and were designed to enhance the actress's eyes for the big screen. This event marked the beginning of the commercial production of false eyelashes, catering to the growing film industry.

Innovations in Materials and Designs

The evolution of false eyelashes continued through the 20th century:

- 1940s: The post-war era saw a rise in the popularity of false eyelashes, fueled by Hollywood glamour. Celebrities like Marilyn Monroe and Audrey Hepburn became iconic for their luscious lashes, prompting women everywhere to seek similar looks. During this time, false eyelashes were often made from human hair or synthetic materials, offering various styles and lengths.
- 1960s: The 1960s brought about radical changes in fashion and beauty. The introduction of the Twiggy look featured dramatic, oversized lashes that further popularized false eyelashes. The use of mascara became a common beauty practice, but false eyelashes remained a favorite for achieving bold, eye-catching effects.

False Eyelashes in Contemporary Beauty Trends

As society progressed into the late 20th and early 21st centuries, false eyelashes underwent significant transformations, aligning with changing beauty standards and technological advancements.

Diversity of Styles and Techniques

Today, false eyelashes come in a variety of styles, materials, and application techniques, catering to diverse preferences. Some of the most popular options include:

- Strip Lashes: These are the most common type of false eyelashes. They come in a strip that can be easily applied along the lash line with adhesive.
- Individual Lashes: These allow for a more customized look, as users can apply individual lashes to achieve their desired fullness and length.
- Magnetic Lashes: A new innovation, magnetic eyelashes use small magnets to attach to the natural lashes, eliminating the need for adhesive.
- Lash Extensions: Unlike traditional false eyelashes, lash extensions are semi-permanent and are applied by a professional, enhancing the natural lashes for a longer duration.

Sustainability and Ethical Considerations

With an increasing awareness of sustainability, many brands are now focusing on creating eco-friendly false eyelashes. This includes using cruelty-free materials and sustainable packaging. Additionally, the rise of vegan false eyelashes has provided consumers with more options that align with ethical considerations.

The Cultural Significance of False Eyelashes

False eyelashes have transcended mere beauty enhancement; they hold cultural significance in various societies around the world.

Global Perspectives

1. Asia: In many Asian cultures, long, thick lashes are associated with beauty and femininity. The use of false eyelashes is widespread, with

different styles reflecting various trends and preferences.

2. Western Cultures: In Western societies, false eyelashes have become synonymous with glamour and sophistication. They are often worn on special occasions, including weddings and red carpet events, symbolizing luxury and elegance.

The Future of False Eyelashes

As the beauty industry continues to evolve, the future of false eyelashes is likely to witness further innovations and trends.

Technological Advancements

The integration of technology into beauty products is set to revolutionize the way false eyelashes are made and applied. Potential advancements include:

- Smart Lashes: Future innovations may introduce smart technology that allows users to change the appearance of their lashes through adjustable lengths or colors.
- 3D Printing: The use of 3D printing technology could enable the creation of customized lashes tailored to individual preferences, enhancing comfort and aesthetics.

Trends in Popularity

The popularity of false eyelashes shows no signs of waning. As beauty influencers and social media platforms continue to promote various lash styles, it is likely that new trends will emerge, keeping the allure of false eyelashes alive.

Conclusion

The **false eyelashes history cumbrella** illustrates a rich tapestry of cultural evolution, technological innovation, and changing beauty standards. From their ancient origins to their modern-day popularity, false eyelashes have captivated the hearts of many. As society continues to embrace diversity in beauty, false eyelashes remain a powerful tool for self-expression and empowerment, allowing individuals to enhance their natural beauty while celebrating their unique identities.

Frequently Asked Questions

What are cumbrellas in the context of false eyelashes?

Cumbrellas are a type of false eyelash that features a unique design to enhance the natural curve and volume of the eyelashes, often providing a more dramatic look compared to traditional false lashes.

When did the trend of false eyelashes, including cumbrellas, start gaining popularity?

The trend of false eyelashes began in the early 20th century, but cumbrellas specifically have gained popularity in the 2020s as part of a broader beauty trend emphasizing bold, dramatic eye looks.

How did false eyelashes evolve into the cumbrellas we see today?

False eyelashes evolved from simple, handmade designs to more complex and innovative styles like cumbrellas, which utilize advanced materials and techniques to achieve a fuller, more voluminous effect.

What materials are commonly used in the production of cumbrellas?

Cumbrellas are often made from synthetic materials like nylon or silk, as well as natural materials such as mink or human hair, allowing for a range of textures and appearances.

Are cumbrellas suitable for everyday wear?

While cumbrellas are designed for dramatic looks, many people wear them for everyday use; however, they may not be as subtle as traditional false eyelashes.

What are the key benefits of using cumbrellas over traditional false eyelashes?

Cumbrellas often provide a more voluminous and eye-catching appearance, are designed to fit the natural curve of the eyelid better, and can be easier to apply due to their unique structure.

How do cumbrellas compare to other eyelash enhancements like eyelash extensions?

Cumbrellas are temporary and can be removed at the end of the day, while eyelash extensions are semi-permanent and require maintenance; cumbrellas

offer versatility for different looks without the commitment.

What are some popular styles or designs of cumbrellas currently trending?

Popular styles of cumbrellas include wispy, layered designs, dramatic volume lashes, and styles that feature varying lengths to create a more natural gradient effect.

Find other PDF article:
<https://soc.up.edu.ph/52-snap/Book?ID=XqE14-8714&title=sedigraph-particle-size-analysis.pdf>

False Eyelashes History Cumbrella

FALSETRUE _
Oct 21, 2023 · FALSETRUE1.True:TrueFalse:False2.True
1False03 ...

true false -
true false falseadj.true1adj.
 ...

EXCELVLOOKUPE3,\$A\$3:\$B\$122FALSE) ...
1005 9002 2 9001 10000 9002 2000 3C2=VLOOKUP
(B2,E2:G3,2,FALSE)ID ...

if -
Jun 17, 2020 · value_if_false 2. A→→→→
B ...

=vlookup (A1,sheet1!A:B,2,FALSE) ...
"FALSE"#N/A sheet1AB
 ...

SUMIF -
Apr 30, 2020 · " " " " A
=C2&D2 ...

Excel vlookup#REF!-
Oct 9, 2019 · ExcelVlookup#REF!
 ...

IFNA -
Sep 5, 2019 · IFNA #N/A IFNA (value, value_if_na)
 ...

Jul 6, 2019 · Shift+F3 Lookup_value E1

3.VLOOKUP ()

Oct 21, 2023 · FALSE True 1.True: True False: False 2.True 1 False 0 3 True ...

```
true false []false[]adj.[...true[]1[]adj.[...
[... ( ...
```

1005 9002 2000000000 0000 00000 0000 9001 000 10000 9002 000 2000 300C2000000000=VLOOKUP
(B2,E2:G3,2,FALSE)0000000000ID00000000 ...

Jun 17, 2020 · value_if_false 2. A → B → ...

“FALSE” #N/A sheet1 A B
A1 ...

[illegible]

Oct 9, 2019 · Excel Vlookup #REF! Error

Sep 5, 2019 · IFNA #N/A IFNA (value, value_if_na)

Jul 6, 2019 · Shift+F3 Lookup_value E1

3.VLOOKUP (lookup_value,table_array,return_index_num,range_lookup)

[Back to Home](#)