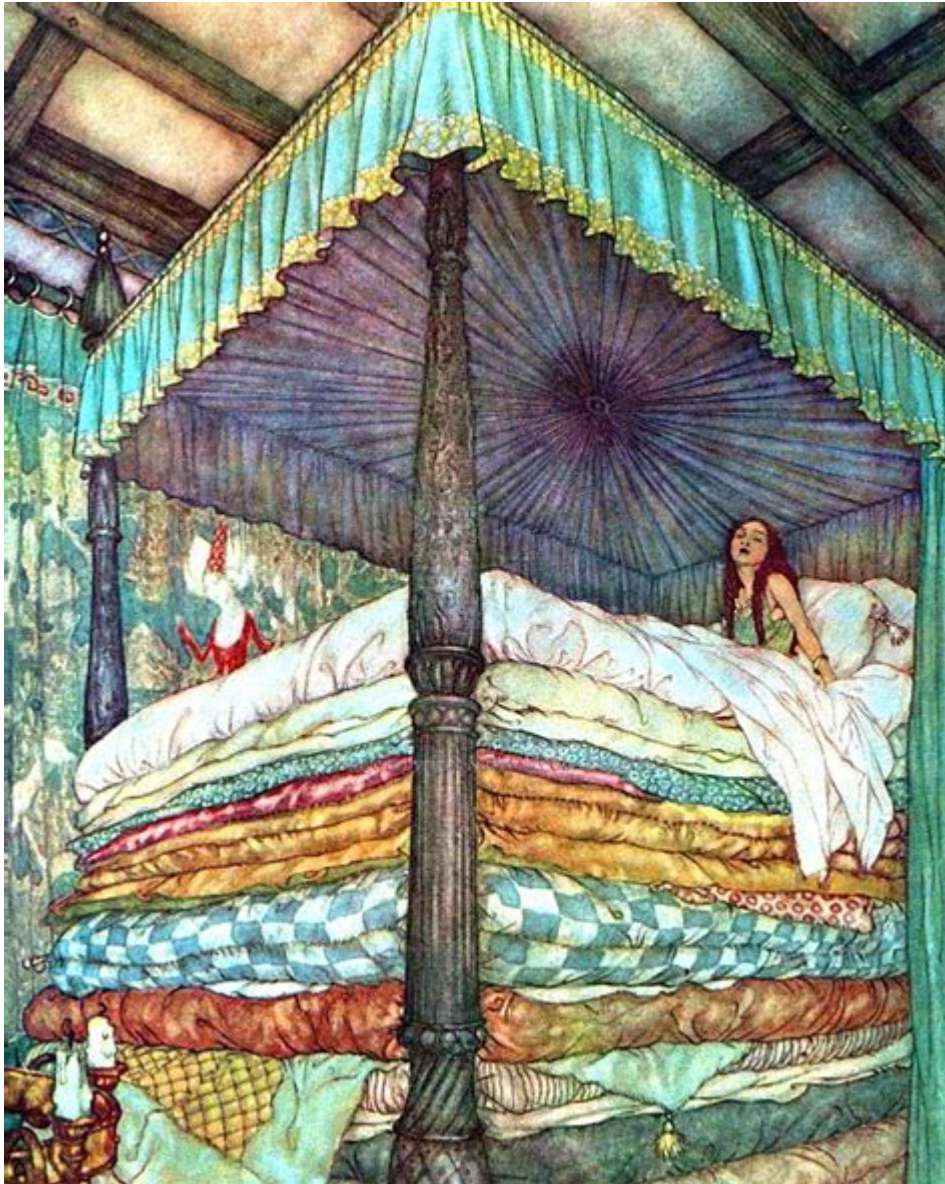


Fairy Tale Princess And The Pea



FAIRY TALE PRINCESS AND THE PEA IS A CLASSIC STORY THAT HAS CHARMED AUDIENCES FOR GENERATIONS. WRITTEN BY HANS CHRISTIAN ANDERSEN, THIS ENCHANTING TALE EXPLORES THEMES OF SENSITIVITY, ROYALTY, AND THE TRUE NATURE OF NOBILITY. THE NARRATIVE REVOLVES AROUND A YOUNG WOMAN WHO CLAIMS TO BE A PRINCESS AND IS SUBJECTED TO A UNIQUE TEST INVOLVING A PEA PLACED BENEATH MULTIPLE MATTRESSES. THIS SEEMINGLY SIMPLE STORY HOLDS DEEPER MEANINGS AND HAS INSPIRED COUNTLESS ADAPTATIONS IN VARIOUS FORMS OF MEDIA. IN THIS ARTICLE, WE WILL DELVE INTO THE ORIGINS, THEMES, ADAPTATIONS, AND CULTURAL SIGNIFICANCE OF "THE PRINCESS AND THE PEA."

ORIGINS OF "THE PRINCESS AND THE PEA"

THE ROOTS OF "THE PRINCESS AND THE PEA" CAN BE TRACED BACK TO DENMARK IN THE EARLY 19TH CENTURY. HANS CHRISTIAN ANDERSEN, A PROLIFIC STORYTELLER, FIRST PUBLISHED THIS FAIRY TALE IN 1835 AS PART OF HIS COLLECTION "EVENTYR, FORTALTE FOR BØRNE" (FAIRY TALES, TOLD FOR CHILDREN). THE STORY QUICKLY GAINED POPULARITY DUE TO ITS IMAGINATIVE PLOT AND THE WHIMSICAL NATURE OF ITS CHARACTERS.

ANDERSEN'S LIFE AND INFLUENCES

TO UNDERSTAND THE FAIRY TALE BETTER, IT'S ESSENTIAL TO LOOK AT ANDERSEN'S LIFE AND THE INFLUENCES THAT SHAPED HIS STORYTELLING:

- BACKGROUND: BORN IN ODENSE, DENMARK, IN 1805, ANDERSEN FACED NUMEROUS HARDSHIPS IN HIS EARLY LIFE, INCLUDING POVERTY AND SOCIAL ISOLATION.
- LITERARY INFLUENCES: ANDERSEN WAS INSPIRED BY FOLK TALES, FOLKLORE, AND THE RICH ORAL TRADITIONS OF HIS HOMELAND. HIS ABILITY TO WEAVE MORAL LESSONS INTO ENCHANTING NARRATIVES SET HIM APART FROM OTHER WRITERS OF HIS TIME.
- CULTURAL CONTEXT: THE EARLY 19TH CENTURY WAS A TIME OF ROMANTICISM IN EUROPE, WHERE LITERATURE OFTEN EMPHASIZED EMOTION, NATURE, AND THE SUPERNATURAL. ANDERSEN'S TALES REFLECT THESE THEMES, MAKING THEM TIMELESS AND UNIVERSALLY APPEALING.

THE SUMMARY OF THE FAIRY TALE

THE STORY OF "THE PRINCESS AND THE PEA" BEGINS WITH A PRINCE WHO IS SEARCHING FOR A REAL PRINCESS TO MARRY. HE TRAVELS FAR AND WIDE BUT IS UNABLE TO FIND ONE THAT MEETS HIS EXPECTATIONS. ONE STORMY NIGHT, A YOUNG WOMAN ARRIVES AT THE CASTLE, CLAIMING TO BE A PRINCESS. DOUBTFUL OF HER AUTHENTICITY, THE QUEEN DEVISES A TEST TO DETERMINE WHETHER SHE IS TRULY OF ROYAL BLOOD.

THE TEST

THE QUEEN PLACES A SINGLE PEA BENEATH TWENTY MATTRESSES AND TWENTY FEATHER BEDS. THE NEXT MORNING, THE YOUNG WOMAN COMPLAINS OF A SLEEPLESS NIGHT, SAYING SHE FELT SOMETHING HARD IN HER BED. THIS REVELATION CONVINCES THE QUEEN AND THE PRINCE THAT SHE IS INDEED A REAL PRINCESS, AS ONLY A TRUE PRINCESS COULD BE SO SENSITIVE.

THE MORAL OF THE STORY

THE MORAL OF "THE PRINCESS AND THE PEA" CAN BE INTERPRETED IN SEVERAL WAYS:

1. TRUE NOBILITY: THE STORY SUGGESTS THAT TRUE NOBILITY IS NOT JUST ABOUT LINEAGE; IT ALSO INVOLVES SENSITIVITY AND A REFINED NATURE.
2. IDENTITY AND AUTHENTICITY: THE PRINCESS'S ABILITY TO FEEL THE PEA SYMBOLIZES THE IMPORTANCE OF BEING TRUE TO ONESELF AND RECOGNIZING ONE'S IDENTITY.
3. JUDGMENT AND PERCEPTION: THE TALE HIGHLIGHTS HOW EASILY PEOPLE CAN BE JUDGED BASED ON SUPERFICIAL TESTS RATHER THAN THEIR TRUE QUALITIES.

ADAPTATIONS OF "THE PRINCESS AND THE PEA"

OVER THE YEARS, "THE PRINCESS AND THE PEA" HAS BEEN ADAPTED INTO VARIOUS FORMS OF ART AND ENTERTAINMENT. ITS TIMELESS THEMES AND WHIMSICAL NATURE MAKE IT A POPULAR CHOICE FOR RETELLINGS.

LITERATURE

NUMEROUS CHILDREN'S BOOKS HAVE BEEN INSPIRED BY ANDERSEN'S ORIGINAL TALE, OFTEN REIMAGINING THE CHARACTERS OR SETTING. THESE ADAPTATIONS MAY SIMPLIFY THE LANGUAGE OR MODIFY THE STORYLINE TO SUIT YOUNGER AUDIENCES.

THEATRE AND MUSICAL

"THE PRINCESS AND THE PEA" HAS ALSO FOUND A PLACE IN THEATER AND MUSICAL PRODUCTIONS:

- STAGE ADAPTATIONS: VARIOUS PLAYWRIGHTS HAVE ADAPTED THE STORY FOR THE STAGE, OFFERING UNIQUE INTERPRETATIONS THAT HIGHLIGHT DIFFERENT ASPECTS OF THE NARRATIVE.
- MUSICALS: ONE OF THE MOST NOTABLE ADAPTATIONS IS THE MUSICAL VERSION CREATED BY COMPOSER AND LYRICIST, WHICH ADDS SONGS AND DANCES, BRINGING THE CHARACTERS TO LIFE IN A VIBRANT WAY.

FILM AND ANIMATION

ANIMATED FILMS HAVE ALSO EMBRACED THE STORY, ALLOWING IT TO REACH NEW GENERATIONS. DISNEY AND OTHER ANIMATION STUDIOS HAVE INCLUDED "THE PRINCESS AND THE PEA" IN THEIR COLLECTIONS, OFTEN BLENDING IT WITH OTHER FAIRY TALES IN A WHIMSICAL FORMAT.

CULTURAL SIGNIFICANCE

THE CULTURAL SIGNIFICANCE OF "THE PRINCESS AND THE PEA" EXTENDS BEYOND ITS FAIRY TALE ROOTS. IT IS OFTEN REFERENCED IN DISCUSSIONS ABOUT PRINCESS CULTURE AND SOCIETAL EXPECTATIONS OF FEMININITY.

MODERN INTERPRETATIONS

IN CONTEMPORARY SOCIETY, THE STORY HAS BEEN REINTERPRETED TO CHALLENGE TRADITIONAL NOTIONS OF ROYALTY AND PRINCESSES:

- EMPOWERMENT: MODERN RETELLINGS OFTEN EMPHASIZE THE EMPOWERMENT OF FEMALE CHARACTERS, SHOWCASING THEIR STRENGTH AND INTELLIGENCE RATHER THAN MERELY THEIR SENSITIVITY.
- DIVERSITY: NEW ADAPTATIONS FREQUENTLY FEATURE DIVERSE CHARACTERS, REFLECTING THE MULTICULTURAL WORLD WE LIVE IN AND BROADENING THE STORY'S APPEAL.

PSYCHOLOGICAL INSIGHTS

PSYCHOLOGISTS AND LITERARY CRITICS HAVE ANALYZED THE TALE FOR ITS INSIGHTS INTO HUMAN NATURE AND EMOTIONAL SENSITIVITY. THE STORY SERVES AS A METAPHOR FOR HOW PEOPLE REACT TO DISCOMFORT AND THE IMPORTANCE OF EMOTIONAL AWARENESS IN RELATIONSHIPS.

CONCLUSION

IN CONCLUSION, THE FAIRY TALE PRINCESS AND THE PEA CONTINUES TO RESONATE WITH AUDIENCES AROUND THE WORLD, SERVING AS A TESTAMENT TO THE ENDURING POWER OF STORYTELLING. ITS EXPLORATION OF SENSITIVITY, IDENTITY, AND NOBILITY ALLOWS FOR RICH INTERPRETATIONS AND DISCUSSIONS. WHETHER EXPERIENCED THROUGH LITERATURE, THEATER, OR MODERN ADAPTATIONS, THIS ENCHANTING TALE ENCOURAGES US TO APPRECIATE THE FINER NUANCES OF HUMAN NATURE AND THE ESSENCE OF TRUE ROYALTY. AS WE EXPLORE OUR OWN IDENTITIES AND RELATIONSHIPS, THE MESSAGES WITHIN "THE PRINCESS AND THE PEA" REMAIN RELEVANT, INSPIRING US TO EMBRACE OUR SENSITIVITIES AND RECOGNIZE THE BEAUTY IN OUR UNIQUENESS.

FREQUENTLY ASKED QUESTIONS

WHAT IS THE MAIN PLOT OF 'THE PRINCESS AND THE PEA'?

THE STORY REVOLVES AROUND A PRINCE WHO IS SEARCHING FOR A TRUE PRINCESS TO MARRY. TO TEST THE AUTHENTICITY OF A GIRL CLAIMING TO BE A PRINCESS, HE PLACES A PEA UNDER TWENTY MATTRESSES, AND ONLY A TRUE PRINCESS WOULD BE SENSITIVE ENOUGH TO FEEL THE PEA.

WHO IS THE AUTHOR OF 'THE PRINCESS AND THE PEA'?

THE TALE WAS WRITTEN BY HANS CHRISTIAN ANDERSEN AND FIRST PUBLISHED IN 1835.

WHAT DOES THE PEA SYMBOLIZE IN THE STORY?

THE PEA SYMBOLIZES SENSITIVITY AND TRUE NOBILITY, SUGGESTING THAT A REAL PRINCESS POSSESSES DELICATE QUALITIES THAT SET HER APART.

HOW HAS 'THE PRINCESS AND THE PEA' INFLUENCED MODERN FAIRY TALES?

THE STORY HAS INFLUENCED MODERN FAIRY TALES BY INTRODUCING THE CONCEPT OF TESTING CHARACTERS' AUTHENTICITY AND NOBILITY THROUGH UNUSUAL CHALLENGES.

WHAT ARE SOME COMMON ADAPTATIONS OF 'THE PRINCESS AND THE PEA'?

COMMON ADAPTATIONS INCLUDE CHILDREN'S BOOKS, ANIMATED FILMS, AND STAGE PRODUCTIONS, OFTEN ADDING MUSICAL ELEMENTS OR COMEDIC TWISTS TO THE ORIGINAL TALE.

WHAT LESSONS CAN BE LEARNED FROM 'THE PRINCESS AND THE PEA'?

THE STORY TEACHES LESSONS ABOUT THE IMPORTANCE OF AUTHENTICITY, THE IDEA THAT TRUE NOBILITY COMES FROM WITHIN, AND THE VALUE OF SENSITIVITY.

HOW DO THE CHARACTERS IN 'THE PRINCESS AND THE PEA' REFLECT SOCIETAL VIEWS ON ROYALTY?

THE CHARACTERS EMBODY THE SOCIETAL VIEWS THAT ROYALTY IS ASSOCIATED WITH CERTAIN TRAITS, SUCH AS SENSITIVITY AND REFINEMENT, WHICH ARE SEEN AS MARKERS OF TRUE NOBILITY.

WHY IS 'THE PRINCESS AND THE PEA' STILL RELEVANT TODAY?

THE TALE REMAINS RELEVANT AS IT EXPLORES THEMES OF IDENTITY, SOCIETAL EXPECTATIONS, AND THE QUEST FOR GENUINE CONNECTIONS, WHICH RESONATE WITH CONTEMPORARY AUDIENCES.

Find other PDF article:

<https://soc.up.edu.ph/29-scan/pdf?ID=UTU84-3183&title=how-many-questions-are-on-the-esthetician-state-board-exam.pdf>

Fairy Tale Princess And The Pea

elf,fairy, genie, pixie,djinn,sprite -

Dec 8, 2024 · elf fairy ...

Fairy tales -

Fairy tales Fairy tales ...

ai fairy -

AI Fairy 5 AI Fairy ...

-

Jul 11, 2021 · Elf Fairy “fatum” ...

2019 4 Fairy gone -

Fairy gone 2019/04/07 2019 4 15 ...

Fairy tale -

fairy tale “fairy” ...

Cherry Fairy Shirley Sweety -

Aug 16, 2020 · em ~ Fairy Sweety Cherry Candy shirley ...

-

...

: —**Light Fairy** | ...

Light Fairy 2020 26 Light Fairy ...

shuga fairy z -

1 shuga fairy 2 3 d d d 4 ...

elf,fairy, genie, pixie,djinn,sprite -

Dec 8, 2024 · elf fairy ...

Fairy tales -

Fairy tales Fairy tales ...

ai fairy -

AI Fairy 5 AI Fairy ...

-

Jul 11, 2021 · Elf Fairy “fatum” ...

童话故事 ...

2019 年 4 月 Fairy gone - 童话

Fairy gone 2019/04/07 童话故事 2019 年 4 月 15 日

Fairy tale 童话故事 - 童话

fairy tale “童话故事” fairy “童话故事” ...

Cherry Fairy Shirley Sweetie - 童话

Aug 16, 2020 · em ~ Fairy Sweetie Cherry Candy shirley ...

童话故事 - 童话

童话故事 ...

童话故事: 童话故事——Light Fairy | 童话故事 ...

Light Fairy 2020 年 26 日 Light Fairy ...

shuga fairy z - 童话

1 shuga fairy 2 3 d d d 4 ...

Explore the enchanting story of the fairy tale princess and the pea. Discover its themes

[Back to Home](#)