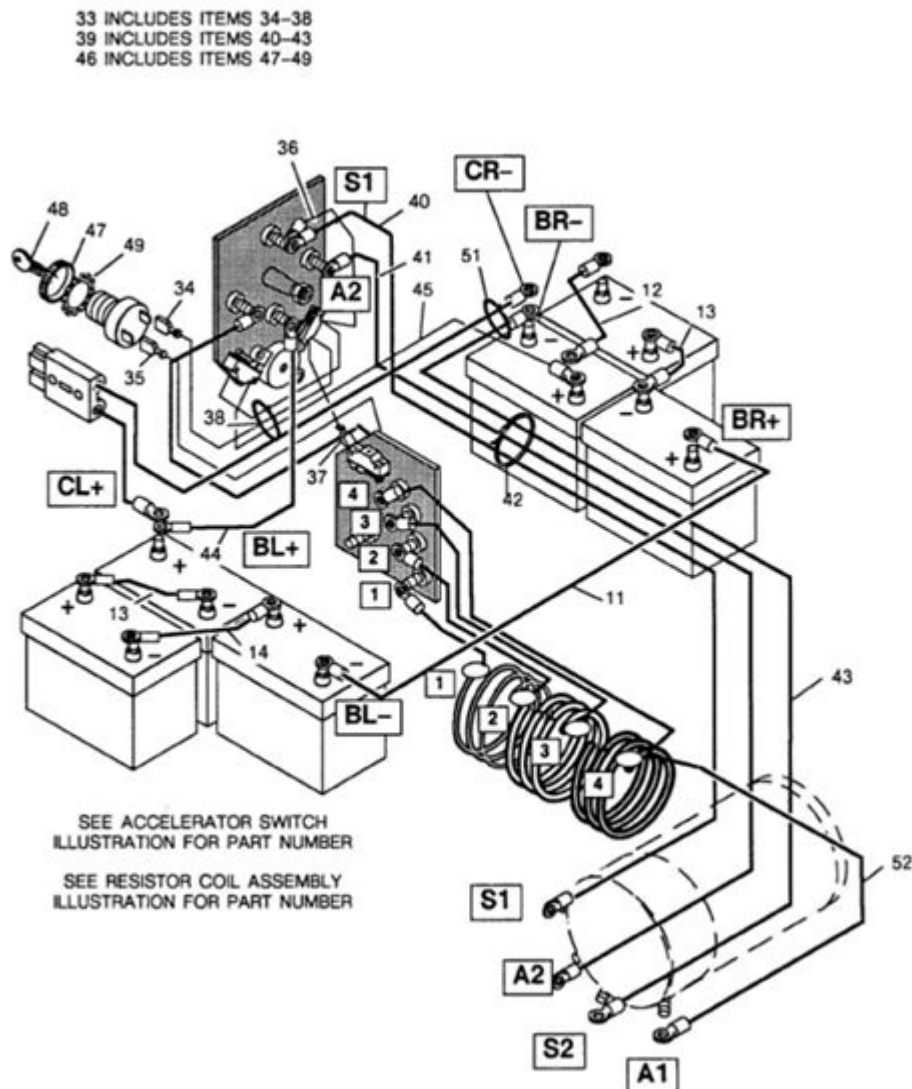


Ezgo Golf Cart Wiring Diagram



ezgo golf cart wiring diagram is an essential resource for anyone looking to troubleshoot, repair, or customize their EZGO golf cart. Understanding the wiring diagram can save you time and money, as it provides a clear visual representation of the electrical components and their connections. This article will delve into the details of EZGO golf cart wiring diagrams, including their importance, the components involved, and how to read and utilize them effectively.

Understanding the Importance of Wiring Diagrams

Wiring diagrams are crucial for several reasons:

- **Troubleshooting:** When electrical issues arise, a wiring diagram allows you to pinpoint where the problem may lie.
- **Repairs:** Knowing how to read a wiring diagram helps in replacing faulty components accurately.
- **Upgrades:** If you plan to upgrade your golf cart with new accessories or functionality, a wiring diagram will guide you in making the right connections.
- **Safety:** Familiarity with the wiring system can prevent accidents caused by incorrect connections or faulty wiring.

Components of an EZGO Golf Cart Wiring Diagram

A typical EZGO golf cart wiring diagram includes various components that work together to power the vehicle. Here are some of the most common components you will encounter:

1. Batteries

Batteries are the heart of an electric golf cart. Depending on the model, EZGO carts may use six 6-volt batteries or four 12-volt batteries. The wiring diagram will indicate how these batteries are connected in series or parallel to provide the required voltage.

2. Motor

The motor is responsible for driving the golf cart. The wiring diagram illustrates how the motor connects to the controller and batteries, as well as the motor's power terminals.

3. Controller

The controller regulates the power delivered from the batteries to the motor. It's a crucial component that allows the cart to accelerate and decelerate smoothly. The wiring diagram shows the connections between the controller, the motor, and the accelerator pedal.

4. Solenoid

The solenoid acts as a switch that connects the battery to the motor when the accelerator is pressed. The wiring diagram will outline how the solenoid is wired to the controller and the battery.

5. Fuses and Circuit Breakers

These safety devices protect the electrical system from overloads and short circuits. The wiring diagram will indicate where these components are located and how they are connected.

6. Lights and Accessories

Many EZGO golf carts come equipped with lights, horns, and other accessories. The wiring diagram will provide details on how to wire these components to the battery and controller.

How to Read an EZGO Golf Cart Wiring Diagram

Reading a wiring diagram may seem daunting at first, but once you understand the symbols and layout, it becomes much easier. Here's a step-by-step guide to help you navigate through an EZGO golf cart wiring diagram:

1. Familiarize Yourself with Symbols

Various symbols represent different components in the wiring diagram. Here are some common symbols you may encounter:

- **Battery:** Typically represented as a series of lines with positive (+) and negative (-) terminals.
- **Motor:** Usually depicted as a circle or rectangle with lines indicating connections.
- **Controller:** Often shown as a rectangle with arrows indicating the flow of electricity.
- **Solenoid:** Represented by a rectangle or oval shape with connections to the battery and motor.

2. Identify the Power Source

Locate the battery section of the diagram to understand how the power source is configured. Pay attention to the voltage and wiring configuration (series or parallel) to ensure proper functionality.

3. Trace the Circuit Paths

Follow the lines connecting the components to understand how electricity flows through the system.

Start from the battery, move to the solenoid, then to the controller, and finally to the motor.

4. Note the Connections

Take special note of how each component is connected to one another. Look for any fuses or circuit breakers in the circuit, as these play a critical role in protecting the system.

5. Check for Annotations

Many wiring diagrams include annotations or notes that provide additional information about specific components or connections. Be sure to read these notes for valuable insights.

Common Wiring Issues and Solutions

While having a wiring diagram is essential, knowing common wiring issues and their solutions can also be beneficial. Here are some typical problems you might encounter and how to address them:

1. Dead Batteries

If your golf cart won't start, check the battery connections. Ensure that all terminals are clean and tightly connected. If the batteries are old or damaged, consider replacing them.

2. Faulty Solenoid

If the solenoid clicks but the cart does not move, there may be an issue with the solenoid itself or its connections. Test the solenoid for continuity and replace it if necessary.

3. Controller Issues

If the cart is not responding to the accelerator, the controller may be faulty. Check all connections for corrosion and ensure they are secure. If the problem persists, consider replacing the controller.

4. Wiring Shorts

If you experience blown fuses or circuit breakers tripping frequently, there may be a short somewhere in the wiring. Inspect the wiring for frayed or damaged insulation and repair or replace as needed.

Conclusion

In conclusion, understanding the **ezgo golf cart wiring diagram** is vital for maintaining and upgrading your golf cart. With the knowledge of components, how to read diagrams, and troubleshooting common issues, you can ensure that your EZGO golf cart remains in optimal condition. Whether you're a seasoned technician or a DIY enthusiast, having a clear grasp of the wiring diagram will empower you to tackle any electrical problem with confidence. Remember, safety first—always disconnect the battery before working on any electrical components!

Frequently Asked Questions

What is an ezgo golf cart wiring diagram used for?

An ezgo golf cart wiring diagram is used to illustrate the electrical connections and components within the golf cart, helping with troubleshooting, repairs, and modifications.

Where can I find a reliable ezgo golf cart wiring diagram?

Reliable wiring diagrams for ezgo golf carts can be found in the owner's manual, online forums, or websites dedicated to golf cart maintenance and repairs.

What are the common issues that can be diagnosed using an ezgo golf cart wiring diagram?

Common issues include electrical shorts, battery connection problems, malfunctioning lights, and faulty controllers, all of which can be diagnosed using the wiring diagram.

Are there different wiring diagrams for different models of ezgo golf carts?

Yes, different models and years of ezgo golf carts may have unique wiring diagrams, so it's important to use the correct diagram for your specific model.

Can I modify my ezgo golf cart's wiring based on the wiring diagram?

Yes, you can modify your ezgo golf cart's wiring based on the wiring diagram, but it's essential to understand the electrical system and ensure that changes comply with safety standards.

What tools do I need to work with an ezgo golf cart wiring diagram?

You will need basic tools such as a multimeter, wire strippers, crimping tools, and possibly soldering equipment, along with the wiring diagram for reference.

Is it safe to work on ezgo golf cart wiring without a professional?

While DIY repairs can be safe if you are knowledgeable about electrical systems, it is advisable to consult a professional if you are unsure or uncomfortable with the process.

Find other PDF article:

<https://soc.up.edu.ph/64-frame/Book?docid=OCv21-5574&title=vector-addition-physics-worksheet.pdf>

Ezgo Golf Cart Wiring Diagram

Plus and minus signs - Wikipedia

The plus sign (+) and the minus sign (−) are mathematical symbols used to denote positive and negative functions, respectively. In addition, the symbol + represents the operation of addition, ...

List of mathematical symbols - Simple English Wikipedia, the ...

This page provides a comprehensive list of mathematical symbols with their meanings and usage in mathematics.

The Surprisingly Short History Of The Plus Sign - Fast Company

06-23-2014 DESIGN The Surprisingly Short History Of The Plus Sign Before the 16th century, most math equations were written as metered verse. Thank god for graphic-design-inclined ...

Origin Story: '+' and '-' the basic signs of arithmetic - Medium

Oct 12, 2015 · The plus and minus signs (+ and −) are mathematical symbols used to represent operations of addition and subtraction as well as the notions of the positive and negative.

Pluszeichen - Wikipedia

Das Kreuz ist als Symbol seit der Steinzeit bekannt (etwa in Steinritzungen), aber meist nicht deutbar. Als Rechenzeichen ist es jüngeren Datums. Noch im 15. Jahrhundert war es üblich, ...

The Wild and Contentious History of Mathematical Symbols

Feb 7, 2025 · Eventually the plus and minus signs became universal, as did the English symbol for equality, but only after decades of famous mathematicians competing in these popularity ...

Where and When Did the Symbols "+" and "-" Originate?

Mar 12, 2013 · The ancient Greeks expressed addition mostly by juxtaposition, but sporadically used the slash symbol "/" for addition and a semi-elliptical curve for subtraction. In the famous ...

Definition of plus sign | PCMag

What does plus sign actually mean? Find out inside PCMag's comprehensive tech and computer-related encyclopedia.

Addition - Wikipedia

Addition $3 + 2 = 5$ with apples, a popular choice in textbooks [1] Addition (usually signified by the plus symbol, +) is one of the four basic operations of arithmetic, the other three being ...

Fun with Numbers: Where do the + Plus and - Jagran Josh

Sep 27, 2022 · Fun with Numbers: Do you know when and where do the Plus (+) and Minus (-) signs originated? Let's look at the amazing facts and history about numbers and symbols.

Mongolia - Wikipedia, la enciclopedia libre

A pesar del establecimiento de relaciones diplomáticas, las relaciones entre China y Mongolia se mantendrían distantes, y Mongolia se alinearía con el bando soviético, de manera evidente ...

Mongolia: cómo es, su cultura y sus características

Descubre Mongolia, un destino fascinante lleno de historia, paisajes únicos y una rica cultura. Explora las estepas y la legendaria Ruta de la Seda.

Mongolia | History, Capital, Map, Flag, Language, Population, Size ...

6 days ago · Mongolia, historically Outer Mongolia, landlocked country located in north-central Asia. It is roughly oval in shape, measuring 1,486 miles (2,392 km) from west to east and, at ...

Mongolia: Información Completa sobre Cultura, Economía y ...

Mongolia es un país situado en Asia Central, conocido por su vasta extensión de territorio, su belleza natural y su rica historia. Con una población de aproximadamente 3 millones de ...

Historia de Mongolia: Descripción, cronología y hechos

Apr 4, 2024 · Mongolia es un país de Asia Central que no tiene salida al mar y limita con Rusia al norte y China al sur. El país se caracteriza por características geográficas únicas que incluyen ...

Mongolia - EcuRed

Mongolia Exterior declaró la independencia de China en 1921 con el apoyo del ejército rojo, y hasta 1924 no se formó un gobierno independiente, cuando la República Popular de Mongolia ...

Definición y concepto de Mongolia | Conceptualia

Mongolia es un país ubicado en Asia Central, limitando con Rusia y China. Es conocido por su vasta extensión de tierras salvajes y desérticas, así como por su rica cultura nómada y su ...

Mongolia - Países del Mundo

Mongolia se encuentra en el corazón de Asia, limitando al norte con Rusia y al sur con China. Conocida como "la Tierra del Cielo Azul", Mongolia es famosa por sus vastas estepas, ...

Mongolia, un recorrido por el corazón del país de los nómadas

Dec 9, 2024 · Mongolia es todavía un país muy desconocido. Situado en el corazón de Asia Central, con Rusia al norte y China al sur, ha llegado hasta nuestros días con un territorio ...

Mongolia - Wikipedia

Mongolia is the world's largest landlocked country that does not border an inland sea, and much of its area is covered by grassy steppe, with mountains to the north and west and the Gobi ...

Discover the essential EZGO golf cart wiring diagram you need for easy troubleshooting and repairs. Learn more to keep your cart running smoothly!

[Back to Home](#)