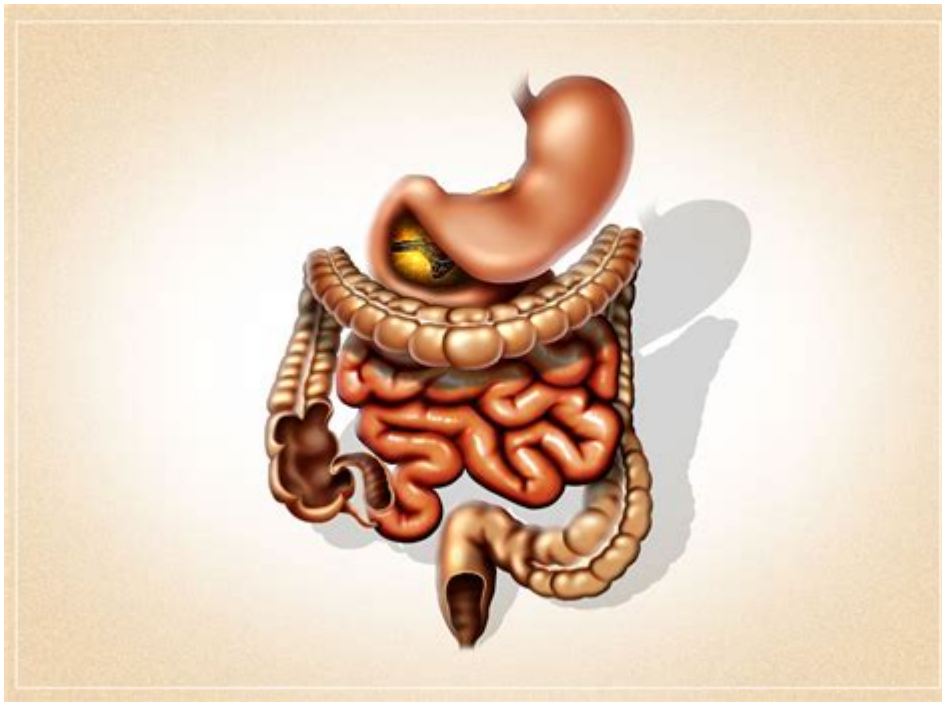


Family History Of Crohns Disease Icd 10



Family history of Crohn's disease ICD 10 is a significant factor in understanding the genetic predisposition and familial patterns associated with this inflammatory bowel disease (IBD). Crohn's disease is a chronic condition that primarily affects the gastrointestinal tract, leading to a range of symptoms and complications. The International Classification of Diseases, Tenth Revision (ICD-10), provides a coding system for classifying diseases, including Crohn's disease, which is essential for diagnosis, treatment, and research. This article will delve into the implications of a family history of Crohn's disease, the ICD-10 coding for this condition, and the broader context of genetic factors influencing the disease.

Understanding Crohn's Disease

Crohn's disease is one of the two main types of inflammatory bowel disease, the other being ulcerative colitis. It can affect any part of the gastrointestinal tract, from the mouth to the anus, but most commonly affects the ileum (the last part of the small intestine) and the beginning of the colon.

Symptoms of Crohn's Disease

The symptoms of Crohn's disease can vary widely among individuals but often include:

- Abdominal pain and cramping
- Diarrhea (which may be bloody)
- Fatigue
- Weight loss
- Reduced appetite
- Fever
- Mouth sores

These symptoms can fluctuate in intensity, leading to periods of remission followed by flare-ups.

Causes and Risk Factors

While the exact cause of Crohn's disease remains unknown, several factors may contribute to its development, including:

- **Genetics:** A family history of Crohn's disease significantly increases the risk of developing the condition. Studies suggest that genetic factors may account for about 30% of the risk.
- **Environmental Factors:** Certain environmental factors, such as diet, smoking, and exposure to certain bacteria, may influence the onset of Crohn's disease.
- **Immune System:** An abnormal immune response may lead to inflammation in the gastrointestinal tract.

Family History and Genetic Predisposition

Research has shown that individuals with a family history of Crohn's disease are at a higher risk of developing the condition. The genetic link can be traced through family lines, indicating a hereditary component to the disease.

Genetic Factors and Family Risk

Several genetic mutations have been associated with Crohn's disease. These include:

1. **NOD2/CARD15:** This gene is one of the most studied in relation to Crohn's disease. Variations in this gene are common in individuals with the disease.
2. **IL23R:** Variations in this gene have been linked to an increased risk of IBD, including Crohn's disease.

3. ATG16L1: This gene is involved in autophagy, and its mutations are associated with a higher risk of Crohn's disease.

Individuals with a first-degree relative (parent or sibling) with Crohn's disease have a significantly higher risk—about 10%—of developing the condition themselves. This risk increases further with multiple affected relatives.

Implications of Family History in Diagnosis

When assessing a patient with symptoms suggestive of Crohn's disease, healthcare providers often inquire about the patient's family history. A positive family history can influence:

- **Diagnostic Testing:** Healthcare providers may pursue more aggressive testing in individuals with a family history.
- **Monitoring and Management:** Family history can affect the strategies used for monitoring disease progression and treatment options.
- **Counseling and Education:** Patients may receive counseling regarding lifestyle modifications and the importance of regular medical check-ups.

ICD-10 Coding for Crohn's Disease

The ICD-10 is crucial for the classification of diseases worldwide. For Crohn's disease, specific codes are used to identify the location and severity of the disease.

Main ICD-10 Codes for Crohn's Disease

- K50.0: Crohn's disease of the small intestine
- K50.1: Crohn's disease of the colon
- K50.8: Crohn's disease of both small and large intestines
- K50.9: Crohn's disease, unspecified

These codes help healthcare providers document the disease for billing, research, and epidemiological purposes. Accurate coding is essential for tracking the prevalence of Crohn's disease in populations, especially among those with a family history.

Importance of Accurate Diagnosis and Coding

Accurate diagnosis and coding of Crohn's disease are vital for several reasons:

- **Treatment Planning:** Proper coding ensures that patients receive appropriate treatment plans based on the specific type and location of their disease.
- **Research:** Understanding the prevalence and characteristics of Crohn's disease within families can help researchers identify genetic and environmental factors that contribute to its onset.
- **Insurance Coverage:** Accurate coding is essential for ensuring that insurance providers cover necessary treatments and interventions.

Living with a Family History of Crohn's Disease

For individuals with a family history of Crohn's disease, navigating the risk can be challenging. Being proactive and informed plays a crucial role in management.

Preventive Measures and Recommendations

1. **Regular Check-ups:** Individuals with a family history should schedule regular check-ups with their healthcare provider to monitor for any early signs of the disease.
2. **Healthy Lifestyle:** Adopting a healthy lifestyle can mitigate some risk factors. This includes:
 - Eating a balanced diet rich in fruits, vegetables, and whole grains
 - Staying hydrated
 - Avoiding smoking
 - Managing stress through mindfulness and relaxation techniques
3. **Education:** Understanding the symptoms and potential complications of Crohn's disease can empower individuals and their families to seek early intervention.
4. **Genetic Counseling:** Families with a strong history of Crohn's disease may benefit from genetic counseling to understand risks and implications further.

Support Systems

Support from family, friends, and support groups can greatly enhance the quality of life for individuals at risk of Crohn's disease. Connecting with others who understand the challenges can provide emotional support and valuable information.

Conclusion

The family history of Crohn's disease is a critical factor influencing the risk of developing this condition. Understanding the genetic predisposition, the significance of accurate ICD-10 coding, and the implications for diagnosis and treatment can empower individuals and families. By adopting preventive measures, maintaining a healthy lifestyle, and staying informed, those with a family history of Crohn's disease can take proactive steps to manage their health effectively. As research continues to evolve, further insights into the genetic and environmental factors contributing to Crohn's disease will enhance our understanding and ability to support those affected.

Frequently Asked Questions

What is Crohn's disease?

Crohn's disease is a chronic inflammatory bowel disease (IBD) that affects the lining of the digestive tract, leading to symptoms like abdominal pain, severe diarrhea, fatigue, and weight loss.

What is the ICD-10 code for Crohn's disease?

The ICD-10 code for Crohn's disease varies based on the specific location of the disease; for example, K50.00 represents Crohn's disease of the small intestine without complications.

How is family history linked to Crohn's disease?

Family history can play a significant role in Crohn's disease, as individuals with a first-degree relative who has the condition are at a higher risk of developing it themselves.

Can Crohn's disease be hereditary?

Yes, Crohn's disease can be hereditary, and genetic factors contribute to the likelihood of developing the disease, making it more common in families with a history of IBD.

What are the symptoms of Crohn's disease?

Common symptoms of Crohn's disease include abdominal pain, diarrhea, fatigue, unintentional weight loss, and malnutrition, which can vary in severity from person to person.

Are there specific lifestyle factors that can influence Crohn's disease?

Yes, factors such as diet, smoking, and stress can influence the onset and

flare-ups of Crohn's disease, alongside genetic predisposition.

How does one manage Crohn's disease with a family history?

Management of Crohn's disease typically includes a combination of medication, dietary changes, and regular follow-up with a healthcare provider, especially for those with a family history.

What tests are used to diagnose Crohn's disease?

Diagnosis of Crohn's disease may involve blood tests, stool tests, colonoscopy, and imaging studies such as CT or MRI scans to assess inflammation and damage in the digestive system.

What are the treatment options for Crohn's disease?

Treatment options for Crohn's disease include anti-inflammatory medications, immunosuppressants, biologics, and in some cases, surgery to remove affected parts of the intestine.

Find other PDF article:

<https://soc.up.edu.ph/66-gist/files?docid=leQ25-2369&title=what-is-the-history-of-hawaii.pdf>

Family History Of Crohns Disease Icd 10

Portal de Servicios al Contribuyente

Normatividad Para mayores informes Dirección de Atención al Contribuyente 800 715 43 50 Correo Electrónico - asismex@edomex.gob.mx

SAT Texcoco: Dirección, Horarios, Teléfono, Citas [2025]

El SAT Texcoco brinda orientación fiscal gratuita marcando al SAT 55 627 22 728 de Lunes a Viernes de 08:00 am a 06:30 pm. Oficinas del SAT en Texcoco. Horarios y teléfono Si tienes ...

BUZÓN TRIBUTARIO - sat.mx

Portal de trámites y servicios satAdicionalmente, cada contenido cuenta con una sección de preguntas frecuentes y contenidos relacionados. Cada trámite podrás descargarlo, imprimirlo, ...

Servicios al Contribuyente EdoMex

Realiza tu pago en línea mediante transferencia si eres cliente de banca electrónica; adicionalmente, si pagas la tenencia con derechos de control vehicular, podrás realizarlo con ...

Portal de Trámites y Servicios del SAT

Es el portal único de trámites, información y participación ciudadana. Leer más.

SAT: Estos son los pasos para acceder a la Regularización Fiscal en ...

6 days ago · Para poder aplicar al beneficio, los pagos deben ser realizados de manera puntual, con la línea de captura emitida por el SAT. Asimismo, el contribuyente debe aceptar el crédito ...

Conoce tu Portal de Trámites y Servicios - SAT

Te ofrece información relevante sobre el tipo de contribuyente o régimen seleccionado. En él tendrás acceso directo a los contenidos más destacados.

SAT: Cómo generar la Constancia de Situación Fiscal por la APP

5 days ago · Se ha difundido información errónea sobre la eliminación de la Constancia de Situación Fiscal y el SAT ya hizo una declaración oficial al respecto.

Directorio de Oficinas de Atención - Portal de Servicios al Contribuyente

Si tiene dudas relacionadas con el pago de sus Impuestos por ejemplo Tenencia o Uso de Vehículos Automotores, Declaraciones y/o Régimen de Incorporación Fiscal para la ...

Servicios al Contribuyente - EdoMex

el pago de sus impuestos sobre Tenencia o Uso de Vehículos Automotores, Erogaciones por Remuneraciones al Trabajo Personal y Régimen de Pequeños Contribuyentes o para la ...

Haukilahti kartta | Fonectan karttapalvelu

Klikkaa yllä olevasta linkistä suoraan 'Haukilahti' karttahuun.

Haukilahti - Kartta.com

Espoon kaupunginosa Haukilahti kartalla. Sää ja tapahtumat kaupunginosassa.

Haukilahti - Wikipedia

Kaupungin kartta, jossa Haukilahti korostettuna. Haukilahti (ruots. Gäddvik) on Espoon kaupunginosa, joka kuuluu Suur-Tapiolan suurpiiriin. Kaupunginosa sijaitsee Suomenlahden ...

Espoon karttapalvelu

Espoon kehittymistä voi seurata aikaisemmin julkaistuista ilmakuvista vuosilta 2001, 2005, 2007, 2009, 2011, 2013, 2015, 2017, 2019, 2021, jotka löytyvät palvelun Karttoja/Ilmakuvat-osiosta.

Kartta Haukilahti | Osoitehaku Haukilahti | Osoite Haukilahti

Katunäkymä Haukilahti: saat katunäkymän näkyviin valitsemastasi paikasta viemällä hiirellä ihmishahmon halumaasi osoitteeseen. Navigointi katunäkymässä ja kuvat Haukilahti: klikkaa ...

Haukilahti - Espoon Suunta

Haukilahti-Westend -kartan laadintaprojekti kesti pitkään ja sisälsi värikkäitä vaihteita. Lue EsSun Taskussa julkaistu sitä kuvaava Illun Ilkeät Special.

Haukilahti Map - Suburb - Espoo, Uusimaa, Finland

Satellite Map Discover Haukilahti from above in high-definition satellite imagery.

Haukilahti Map | Finland Google Satellite Maps - maplandia.com

See Haukilahti photos and images from satellite below, explore the aerial photographs of Haukilahti in Finland. Haukilahti hotels map is available on the target page linked above.

Fonecta.fi - Suomen kartta, karttahuu, karttapalvelu, reittikartta ...

Fonectan karttapalvelu on laadultaan ja toiminnoiltaan erinomainen. Karttapalvelusta löydät sekä

sijainti- että reittihaun.

MICHELIN Haukilahti map - ViaMichelin

Find detailed maps for Finland South Karelia Haukilahti on ViaMichelin, along with road traffic, the option to book accommodation and view information on MICHELIN restaurants for - Haukilahti.

Discover how a family history of Crohn's disease relates to ICD-10 coding. Understand its implications and get insights on diagnosis. Learn more today!

[Back to Home](#)