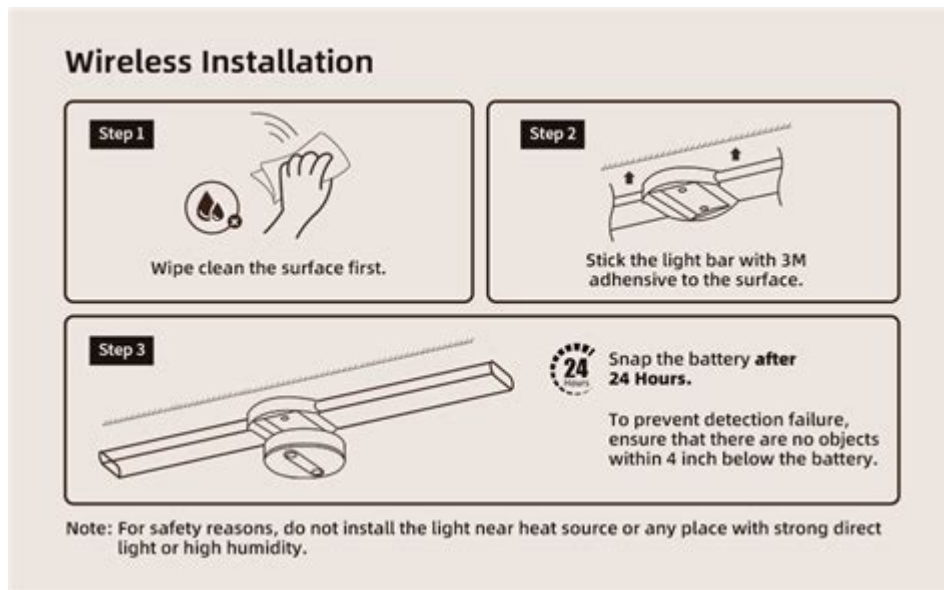


# Ezvalo Motion Sensor Light Instructions



Ezvalo motion sensor light instructions are essential for ensuring that users can effectively set up and utilize this innovative lighting solution. With its advanced technology and user-friendly design, the Ezvalo motion sensor light provides convenience and security for various applications, whether in the home, office, or outdoor spaces. This article will guide you through the installation, usage, and troubleshooting of your Ezvalo motion sensor light, ensuring you maximize its functionality and benefits.

## Understanding Your Ezvalo Motion Sensor Light

Before diving into the instructions, it is important to understand the components and features of your Ezvalo motion sensor light. This product is designed to automatically turn on when it detects motion within a certain range, providing illumination only when needed.

### Key Features

1. **Motion Detection:** The light uses infrared sensors to detect movement, ensuring it activates only when someone is present.
2. **Adjustable Brightness:** Users can customize the brightness level according to their preferences.
3. **Energy Efficiency:** The LED technology ensures low energy consumption while providing high output.
4. **Versatile Installation:** The Ezvalo motion sensor light can be installed in various locations, including hallways, closets, garages, and outdoor areas.
5. **Rechargeable Battery:** Many models come equipped with a rechargeable battery, eliminating the need for constant battery replacements.

# Installation Instructions

Proper installation is crucial for the effective functioning of your Ezvalo motion sensor light. Follow these steps to ensure a seamless setup.

## What You'll Need

- Ezvalo motion sensor light
- Mounting hardware (usually included)
- Screwdriver
- Level (optional)
- Measuring tape

## Step-by-Step Installation Guide

### 1. Choose the Location:

- Select a location where the light can detect motion easily, typically around 6-8 feet off the ground.
- Ensure there are no obstructions that could impede the sensor's view.

### 2. Mark the Mounting Holes:

- Hold the light fixture up against the wall or surface where you want to install it.
- Use a pencil to mark the spot for the mounting holes.

### 3. Drill Holes:

- Depending on the surface type (drywall, wood, etc.), use an appropriate drill bit to create holes where you marked.

### 4. Attach the Mounting Bracket:

- Use the screws provided in the package to attach the mounting bracket securely to the surface.

### 5. Connect the Light:

- If your model requires hardwiring, ensure the power is off before making connections.
- For battery-operated models, simply slide the light onto the bracket without wiring.

### 6. Adjust the Angle:

- If your model allows for angle adjustments, tilt the light to cover the desired area.

### 7. Test the Installation:

- Turn on the power if hardwired, or switch the light on.

- Walk in front of the sensor to ensure it activates properly.

## Using Your Ezvalo Motion Sensor Light

Once installed, it's time to understand how to use your Ezvalo motion sensor light effectively. The operation is straightforward, but knowing the features can enhance your experience.

### Powering On and Off

- Automatic Activation: The light will turn on automatically when motion is detected within the specified range.
- Manual Override: If your model has a manual switch, you can turn the light on or off at your discretion.

### Adjusting Settings

#### 1. Brightness Control:

- Locate the brightness adjustment feature, usually found on the side or back of the unit.
- Rotate or press the button to select your desired brightness level.

#### 2. Sensitivity Settings:

- Some models feature sensitivity adjustments to alter how easily the motion sensor triggers.
- Adjust according to your needs, especially if you experience false triggers from pets or passing cars.

#### 3. Time Delay Setting:

- This feature allows you to set how long the light stays on after motion is no longer detected.
- Options typically range from 10 seconds to several minutes.

## Maintenance Tips

To ensure longevity and consistent performance from your Ezvalo motion sensor light, regular maintenance is necessary.

### Cleaning the Light

- Use a soft, dry cloth to wipe the light fixture regularly.
- Avoid using harsh chemicals or abrasive materials that could damage the surface.

## **Battery Care (If Applicable)**

- If your model uses rechargeable batteries, ensure you charge them fully before using.
- Replace batteries as needed, following the manufacturer's guidelines for battery type.

## **Troubleshooting Common Issues**

Even with proper installation and maintenance, you might encounter some problems with your Ezvalo motion sensor light. Here are some common issues and solutions.

### **Light Does Not Turn On**

- Check Power Source: Ensure the light is connected to a working power source or that the batteries are charged.
- Sensor Obstruction: Make sure nothing is blocking the sensor's view.

### **Light Turns On Unexpectedly**

- Sensitivity Too High: Adjust the sensitivity settings to prevent the light from triggering due to small movements or passing cars.
- Environmental Factors: Ensure there are no heat sources (like heaters or AC units) near the sensor.

### **Short Battery Life**

- Frequent Use: If the light is used frequently, consider adjusting the time delay setting to conserve battery.
- Faulty Battery: Replace the battery if it no longer holds a charge.

## Conclusion

In summary, following these Ezvalo motion sensor light instructions will allow you to enjoy the full benefits of this innovative lighting solution. With its ease of installation, user-friendly features, and energy efficiency, the Ezvalo motion sensor light is an excellent addition to any home or office. By understanding how to install, use, and maintain this product, you can ensure that your surroundings remain well-lit and secure, providing peace of mind and convenience for you and your family.

## Frequently Asked Questions

### What are the basic installation steps for the Ezvalo motion sensor light?

To install the Ezvalo motion sensor light, first, choose a suitable location where the sensor can detect motion. Then, mount the light using the provided screws and anchors, ensuring it is securely attached. Finally, connect the power supply and test the light to ensure it activates properly.

### How do I adjust the sensitivity of the Ezvalo motion sensor light?

To adjust the sensitivity, locate the sensitivity dial on the back of the sensor. Turning the dial clockwise increases sensitivity, allowing it to detect motion from a greater distance, while turning it counterclockwise decreases sensitivity.

### Can the Ezvalo motion sensor light be used outdoors?

Yes, the Ezvalo motion sensor light is designed for both indoor and outdoor use. Ensure it is installed in a sheltered area to protect it from direct exposure to harsh weather conditions.

### What is the recommended height for mounting the Ezvalo motion sensor light?

The recommended height for mounting the Ezvalo motion sensor light is between 6 to 8 feet off the ground. This height allows for optimal motion detection while minimizing false triggers.

### How do I change the batteries in the Ezvalo motion sensor light?

To change the batteries, remove the light from its mounting bracket. Open the battery compartment, replace the old batteries with new ones of the same type, and reassemble the light before remounting it.

### What should I do if the Ezvalo motion sensor light is not turning on?

If the light is not turning on, first check the power supply and ensure the batteries are charged or new. Also, verify that the motion sensor is not obstructed and that the sensitivity settings are appropriately

adjusted.

## Is there a timer feature on the Ezvalo motion sensor light?

Yes, the Ezvalo motion sensor light typically includes a timer feature that allows you to set how long the light stays on after detecting motion. This can usually be adjusted using a dial or switch on the unit.

## What is the warranty period for the Ezvalo motion sensor light?

The Ezvalo motion sensor light typically comes with a warranty period of one year from the date of purchase, covering any manufacturing defects. Be sure to check the specific warranty terms with your retailer.

Find other PDF article:

<https://soc.up.edu.ph/65-proof/pdf?dataid=MGo41-0475&title=weird-of-the-white-wolf.pdf>

## Ezvalo Motion Sensor Light Instructions

### **John Howie Steak Restaurant**

John Howie Steak in Bellevue offers catering and a diverse range of chef-designed specialty menus featuring the same local, sustainable hand-crafted ...

#### JOHN HOWIE STEAK RESTAURANT - Updated July 2...

For most people, John Howie Steak is more of a special occasion type of place. We are no different. For a celebration, we popped in and ...

#### John Howie Steak Restaurant - Bellevue, WA | OpenTable

2 days ago · John Howie Steak delivers a premium dining experience with "amazing" and "delicious" steaks, including standout Wagyu and Filet ...

### **Book Your John Howie Steak Reservation Now on Resy**

Jan 7, 2025 · Bellevue's John Howie Steak offers seven tiers of top-notch beef, from custom-aged prime cuts to American Wagyu, Australian Wagyu, ...

### **John Howie Steak Restaurant Menu (Updated for 2025)**

Indulge in exquisite steaks and top-tier service at John Howie Steak Restaurant in Bellevue, WA. With a classy atmosphere and a menu featuring ...

#### Tell Me Everything - Erotic Couplings - Literotica.com

"Come on now, tell me everything." Before she knew what she was doing, she could hear herself telling him everything. Starting with the jeans she was wearing and how ...

### **Go for It, but Tell Me Everything Ch. 01 - Literotica**

In our late 20's, 30's and early 40's, like some married couples, we had our share of sexcapades with

each other that always led to incredible sex. As we began getting ...

**Go for It, but Tell Me Everything - Story Series - Literotica.com**

Jan 4, 2017 · TABLE OF CONTENTS Go for It, but Tell Me Everything Ch. 01 A wife's adventure with her husband's permission. ...

**Tell Me What You Want Ch. 01 - BDSM - Literotica.com**

Beatrice was his wife's best friend all the way from school and still inseparable. Bea and Lotte, Hector's wife, booked holidays together most years, had been each ...

[Literotica.com - New Erotic Stories](#)

1 day ago · New free erotic stories added to Literotica in the last few days.

Get clear and easy-to-follow ezvalo motion sensor light instructions. Enhance your home's security and lighting today! Learn more for step-by-step guidance.

[Back to Home](#)