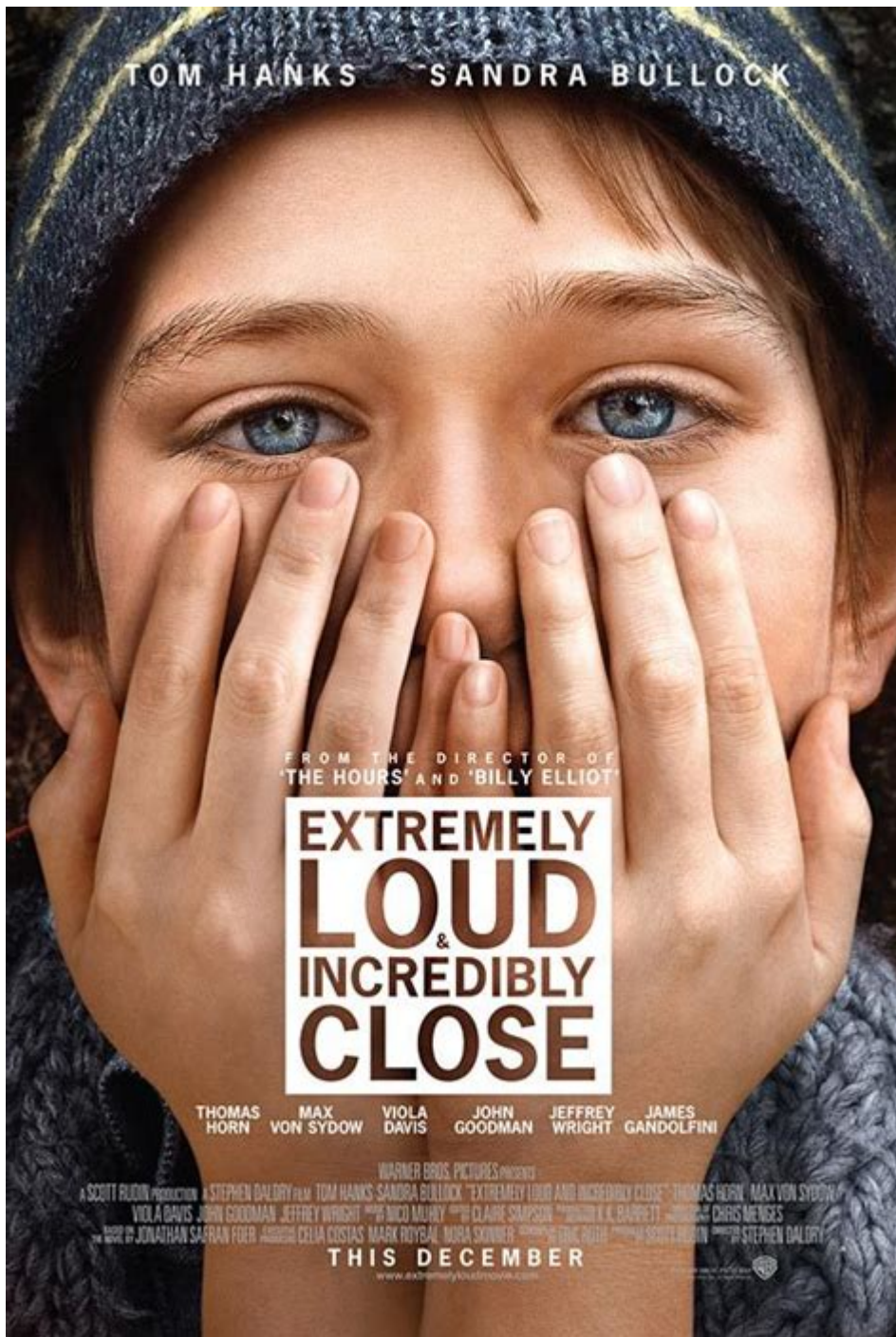


Extremely Loud And Incredibly Close Full



Extremely Loud and Incredibly Close is a profound novel that intricately weaves themes of grief, love, and the quest for understanding in the aftermath of tragedy. Written by Jonathan Safran Foer and published in 2005, the story follows a young boy named Oskar Schell as he navigates the complexities of loss following the events of September 11, 2001. The narrative is characterized by its unique structure, blending various forms of storytelling to create a rich, emotional tapestry that resonates with readers. This article will explore the central themes, characters, narrative style, and the cultural impact of Extremely Loud and Incredibly Close, shedding light on why it remains a significant work in contemporary literature.

Overview of the Plot

Extremely Loud and Incredibly Close centers around Oskar Schell, a precocious 9-year-old boy who is deeply affected by the death of his father, Thomas Schell, in the 9/11 attacks. Oskar, who has a unique way of seeing the world, embarks on a quest to find the lock that fits a mysterious key he discovered in his father's belongings. He believes that by finding this lock, he can connect with his father's memory and perhaps understand the circumstances of his death better. This journey takes him across New York City, where he encounters various individuals who each carry their own stories of loss and resilience.

Key Characters

1. Oskar Schell: The protagonist, a young boy with a vivid imagination and a strong desire to make sense of his father's death. Oskar is characterized by his intelligence, sensitivity, and tendency to overthink.
2. Thomas Schell: Oskar's father, whose tragic death in the 9/11 attacks serves as the catalyst for the story. Through Oskar's memories and flashbacks, readers get glimpses of Thomas's loving nature and the bond he shared with his son.
3. Linda Schell: Oskar's mother, who grapples with her own grief while trying to support her son. Her character represents the struggle to cope with loss and the different ways people deal with tragedy.
4. The Renter: An enigmatic figure who resides in Oskar's grandparents' apartment. He becomes a significant part of Oskar's journey, providing a connection to the past and a new perspective on grief.
5. Oskar's Grandparents: They play a crucial role in the narrative, particularly through their own backstory of loss during World War II. Their experiences parallel Oskar's, highlighting the generational impact of trauma.

Thematic Exploration

Extremely Loud and Incredibly Close delves into several significant themes that resonate deeply with readers.

Grief and Loss

The novel's primary theme is the exploration of grief. Oskar's journey is a poignant representation of how loss can manifest in various forms. Throughout the story, the narrative showcases:

- Individual Grieving Processes: Each character demonstrates a different way of coping

with loss. Oskar's obsessive quest contrasts with his mother's more subdued approach, emphasizing that grief is not a one-size-fits-all experience.

- The Impact of Trauma: The story highlights how traumatic events can reverberate through families and communities. Oskar's grandparents' experiences during the war echo his own struggles, creating a layered understanding of grief that transcends generations.

Connection and Isolation

Another vital theme is the need for connection amidst isolation. Oskar often feels alone in his grief, which drives him to seek out others who have also experienced loss. This theme is illustrated through:

- The Importance of Relationships: The interactions Oskar has with the various people he meets during his quest reveal the necessity of human connection. Each character provides Oskar with insights and perspectives that help him navigate his pain.

- Isolation in Grief: The novel emphasizes how grief can isolate individuals, making them feel as though they are alone in their suffering. Oskar's initial feelings of isolation highlight the universal struggle of wanting to be understood and supported.

Memory and Remembrance

Memory plays a crucial role in the narrative, influencing how characters process their grief. The exploration of memory involves:

- The Role of Artifacts: The key that Oskar finds symbolizes the memories he holds of his father. It represents how tangible objects can evoke deep emotions and facilitate connections to those we have lost.

- Revisiting the Past: Oskar's journey is also a means of revisiting his memories of his father. The novel suggests that understanding the past is essential for healing and moving forward.

Narrative Style and Structure

Extremely Loud and Incredibly Close is noted for its innovative narrative style, which reflects Oskar's unique perspective and thought processes. The structure includes:

- Illustrations and Photographs: Foer incorporates various illustrations and photographs throughout the book, enhancing the emotional impact of the story and providing visual representations of Oskar's thoughts and feelings.

- Non-linear Storytelling: The narrative moves back and forth in time, interweaving Oskar's present-day quest with memories of his father and the experiences of his

grandparents during the war. This non-linear approach allows readers to understand the complexity of grief and memory.

- Stream of Consciousness: Oskar's thoughts often flow in a stream-of-consciousness style, reflecting his anxiety and the way children process information. This narrative technique invites readers into Oskar's mind, allowing them to experience his confusion, longing, and determination.

Cultural Impact and Reception

Since its publication, *Extremely Loud and Incredibly Close* has had a significant cultural impact, resonating with readers across the globe.

Critical Reception

The novel received mixed to positive reviews from critics, with many praising its emotional depth and innovative structure. Some key points of critique include:

- Emotional Resonance: Many reviewers commended Foer for his ability to capture the complexities of grief and the human experience.
- Narrative Complexity: Some critics found the non-linear storytelling challenging, while others appreciated the depth it added to the characters and themes.

Adaptations

In 2011, the novel was adapted into a film directed by Stephen Daldry, featuring Tom Hanks and Sandra Bullock. The film adaptation brought the story to a broader audience and contributed to discussions about the lasting effects of trauma and loss in contemporary society.

Legacy

Extremely Loud and Incredibly Close continues to be taught in literature courses and remains a significant work in the canon of contemporary American literature. Its exploration of universal themes, such as grief, connection, and the human condition, ensures its relevance in ongoing discussions about the impact of tragedy on individual lives and communities.

Conclusion

In summary, *Extremely Loud and Incredibly Close* is a profound exploration of the complexities of grief and human connection. Through the journey of Oskar Schell, Jonathan Safran Foer masterfully delves into themes that resonate with readers on multiple levels. The unique narrative style and structure further amplify the emotional weight of the story, making it a compelling read. As society continues to grapple with collective trauma and personal loss, the themes presented in this novel remain more pertinent than ever. Foer's work serves as a reminder of the enduring power of love and memory in the face of unimaginable sorrow.

Frequently Asked Questions

What are the main themes explored in 'Extremely Loud and Incredibly Close'?

The novel explores themes of grief, trauma, loss, and the search for meaning in the aftermath of tragedy, particularly following the events of 9/11.

Who is the protagonist of 'Extremely Loud and Incredibly Close' and what is his mission?

The protagonist is Oskar Schell, a young boy who embarks on a quest to find the lock that matches a mysterious key left behind by his father, who died in the 9/11 attacks.

How does the narrative structure of 'Extremely Loud and Incredibly Close' enhance the story?

The narrative intertwines Oskar's perspective with the stories of other characters, using a mix of text, images, and unconventional formatting to reflect the complexity of grief and memory.

What role do the secondary characters play in Oskar's journey?

Secondary characters, including Oskar's grandparents, provide different perspectives on loss and help to highlight the impact of trauma across generations, ultimately aiding Oskar in his quest for closure.

What is the significance of the title 'Extremely Loud and Incredibly Close'?

The title reflects the intense emotions associated with loss and longing, suggesting that while Oskar feels the presence of his father strongly, he is also grappling with the overwhelming noise of his grief.

How has 'Extremely Loud and Incredibly Close' been received by critics and readers?

The novel received mixed reviews, with some praising its emotional depth and innovative style, while others critiqued its structure and heavy themes; however, it has maintained a significant readership and has been adapted into a film.

What impact did the events of September 11 have on the story of 'Extremely Loud and Incredibly Close'?

The events of September 11 serve as the catalyst for Oskar's journey and the exploration of grief, illustrating how national tragedy can profoundly affect individual lives and relationships.

Find other PDF article:

<https://soc.up.edu.ph/65-proof/files?docid=AeL45-3968&title=what-am-i-riddles-answers-level-26-50.pdf>

Extremely Loud And Incredibly Close Full

extreme - **extremely** - **extremity**

Oct 21, 2024 · extreme[]extremely[]extremely[]
 [] ...

Terribly vs. Extremely - WordReference Forums

Nov 10, 2024 · Hi everyone! Could you please tell me which adverb is correct in the following sentence? And why? *Smoking is terribly/ extremely common among young people.

an/a extremely - WordReference Forums

Oct 7, 2010 · Hi! Is it correct to say an extremely busy month or a extremely busy month? Because I know that when you have a vowel sound you need to use an, so I'm not sure about ...

absolutely, extremely, exactly, actually □□□□□ □□□□

Dec 18, 2024 · absolutely absolutely true absolutely true ...

extremely,thoroughly,absolutely,completely□□□? □□□□

Dec 28, 2024 · extremely,thoroughly,absolutely,completely?Extremely, ...

dramatically, significantly, extremely, ultimately - WordReference ...

May 28, 2014 · Ok, for instance, my hometown has changed dramatically/ significantly/ extremely/ ultimately Or that girl is dramatically/ significantly/ extremely/ ultimately beautiful.

Extremely saying - WordReference Forums

Nov 18, 2010 · The textbook says: Extremely saying, commercials are the symbol of the times because commercials sometimes make words that are going around and we can know what ...

Seriously/Extremely sensitive skin - WordReference Forums

Jun 10, 2025 · Can your skin be "Seriously sensitive" to the sun in English? Is this the right collocation?, I have following scale: "Not at all sensitive", "Quite..."

[illegible]

Jan 15, 2013 · extremely exceeding exceeding exceed “ ” exceeding ...

Absolutely/Utterly - Highly/Extremely | WordReference Forums

Mar 19, 2011 · Hello, I started reading the book English Collocations in Use. In the 6th lesson it shows what words I could use instead of "very". Can you tell me what is the difference ...

extreme□**extremely**□□□ - □□□□

Oct 21, 2024 · extreme extremely extremely extremely extremely extremely extremely extremely extremely ...

Terribly vs. Extremely - WordReference Forums

Nov 10, 2024 · Hi everyone! Could you please tell me which adverb is correct in the following sentence? And why? *Smoking is terribly/ extremely common among young people.

an/a extremely - WordReference Forums

Oct 7, 2010 · Hi! Is it correct to say an extremely busy month or a extremely busy month? Because I know that when you have a vowel sound you need to use an, so I'm not sure about ...

absolutely, extremely, exactly, actually

Dec 18, 2024 · absolutely [REDACTED] “absolutely true” [REDACTED] “[REDACTED]” [REDACTED]
[REDACTED] ...

extremely,thoroughly,absolutely,completely□□□? □□□□

Dec 28, 2024 · extremely,thoroughly,absolutely,completely?Extremely, ...

dramatically, significantly, extremely, ultimately - WordReference ...

May 28, 2014 · Ok, for instance, my hometown has changed dramatically/ significantly/ extremely/ ultimately Or that girl is dramatically/ significantly/ extremely/ ultimately beautiful.

Extremely saying - WordReference Forums

Nov 18, 2010 · The textbook says: Extremely saying, commercials are the symbol of the times because commercials sometimes make words that are going around and we can know what ...

Seriously/Extremely sensitive skin - WordReference Forums

Jun 10, 2025 · Can your skin be "Seriously sensitive" to the sun in English? Is this the right collocation?, I have following scale: "Not at all sensitive", "Quite...

extremely **exceedingly** _____

Jan 15, 2013 · extremely exceeding exceeding exceed “”
exceeding ...

Absolutely/Utterly - Highly/Extremely | WordReference Forums

Mar 19, 2011 · Hello, I started reading the book English Collocations in Use. In the 6th lesson it shows what words I could use instead of "very". Can you tell me what is the difference ...

Explore the profound themes of "Extremely Loud and Incredibly Close" in our in-depth analysis. Discover how this powerful story resonates deeply. Learn more!

[Back to Home](#)