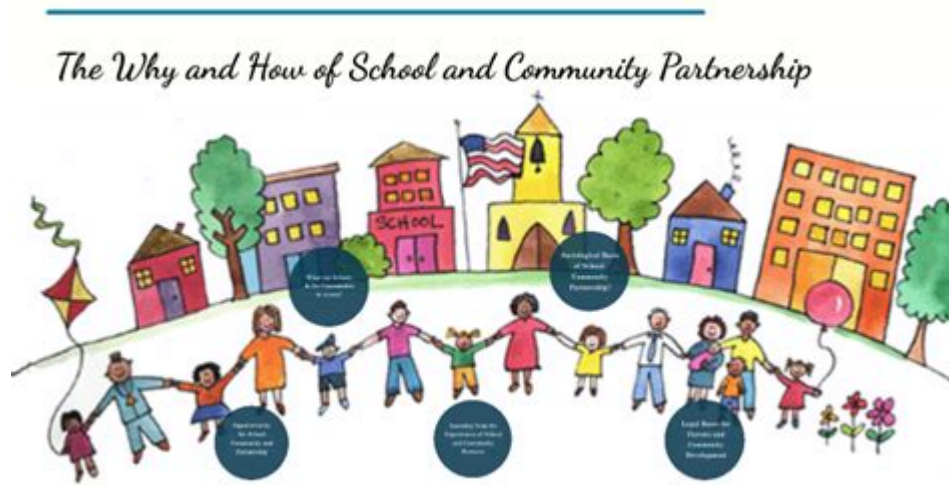


Family School And Community Relationships



Family school and community relationships are essential components in fostering an effective educational environment for children. These relationships create a supportive network that enhances student learning and development. When families, schools, and communities collaborate, they can create a robust support system that addresses the diverse needs of students. This article explores the significance of these relationships, their benefits, and practical strategies for fostering collaboration among families, schools, and communities.

The Importance of Family School and Community Relationships

Family school and community relationships are integral to a child's educational experience. These partnerships can significantly influence a child's academic performance, social skills, and emotional well-being. The importance of these relationships can be understood through several key points:

1. Enhanced Student Learning

Research has consistently shown that when families are involved in their children's education, students perform better academically. This involvement can take many forms, including:

- Attending school events
- Communicating with teachers

- Helping with homework
- Participating in parent-teacher conferences

When families engage with schools, they reinforce the value of education and encourage their children to take their studies seriously.

2. Improved Social Skills

Children learn vital social skills from their interactions with family members and peers. When families, schools, and communities work together, they create opportunities for children to develop these skills in diverse settings. For instance:

- Community events can provide a platform for socialization.
- Group activities in schools foster teamwork and cooperation.
- Family volunteering initiatives can teach children the importance of community service.

These experiences help children build confidence and learn how to navigate social situations effectively.

3. Emotional Support

Emotional well-being is crucial for a child's overall development. Strong family school and community relationships contribute to a support system that can help students navigate challenges. This support can manifest in various ways:

- Emotional guidance from parents and teachers during tough times.
- Access to community resources, such as counseling services.
- Participation in support groups for families facing similar challenges.

When children feel supported, they are more likely to thrive in school and beyond.

Benefits of Strong Family School and Community Relationships

Building strong relationships among families, schools, and communities offers numerous benefits that extend beyond individual students. These benefits can impact entire communities and educational systems.

1. Increased Community Engagement

When families and schools work together, communities become more engaged in the educational process. This engagement can lead to:

- Increased volunteerism in schools.
- Stronger community support for educational initiatives.
- More resources for schools through local partnerships.

Communities that prioritize education create an environment where learning can flourish.

2. Better Resource Allocation

Collaborative relationships can lead to more effective resource allocation. Schools that engage with families and community organizations can identify needs more accurately and distribute resources accordingly. This can result in:

- Targeted programs addressing specific community needs.
- Increased funding from local businesses and organizations.
- Shared use of facilities for community events and educational programs.

Efficient resource allocation enhances the overall educational experience for students.

3. Holistic Development of Students

Family school and community relationships contribute to the holistic development of students. When schools, families, and communities collaborate, they can address various aspects of a child's development, including:

- Academic growth through shared learning opportunities.
- Social and emotional development through community engagement.
- Physical well-being through health and wellness programs.

This comprehensive approach ensures that students are well-rounded and prepared for future challenges.

Strategies for Fostering Family School and Community Relationships

Building and maintaining strong relationships among families, schools, and communities requires intentional effort and collaboration. Here are some practical strategies that can help foster these relationships:

1. Open Communication

Establishing open lines of communication is crucial for effective collaboration. Schools can implement:

- Regular newsletters to keep families informed.
- Parent-teacher conferences to discuss student progress.
- Online platforms for families to communicate with teachers.

Encouraging two-way communication helps families feel valued and engaged in their child's education.

2. Community Involvement

Schools should actively seek to involve community members in educational initiatives. This can include:

- Inviting local leaders to participate in school events.
- Creating partnerships with local businesses for internships and mentorships.
- Organizing community service projects that involve students and families.

Involvement from the community enriches the educational experience and strengthens ties between families and schools.

3. Inclusive Programs

Creating inclusive programs that cater to the diverse needs of families and communities is vital. Schools can develop:

- Workshops for parents on supporting their children's education.
- Cultural events that celebrate the diversity of the student population.
- Support groups for families dealing with specific issues, such as mental health or learning disabilities.

Inclusive programs ensure that all families feel welcomed and valued within the school community.

4. Collaborative Decision-Making

Empowering families and community members to participate in decision-making processes fosters a sense of ownership and accountability. Schools can:

- Form parent advisory committees.

- Solicit feedback on school policies and programs.
- Involve community stakeholders in strategic planning.

When families and community members have a voice in decision-making, it strengthens their commitment to the school and its mission.

Conclusion

In summary, **family school and community relationships** play a vital role in enhancing the educational experience for students. By fostering collaboration among families, schools, and communities, we can create a supportive environment that promotes student learning, social skills, and emotional well-being. With intentional strategies focused on communication, community involvement, inclusivity, and collaborative decision-making, we can build strong relationships that benefit not only individual students but also the broader community. Investing in these relationships ultimately leads to a brighter future for our children and society as a whole.

Frequently Asked Questions

What are effective strategies for improving family engagement in schools?

Effective strategies include regular communication through newsletters and meetings, providing flexible meeting times, involving families in decision-making processes, and creating volunteer opportunities that match families' skills and interests.

How can schools foster positive relationships with the community?

Schools can foster positive relationships by partnering with local businesses for resources and support, hosting community events, encouraging student participation in community service, and establishing advisory boards that include community members.

What role do families play in enhancing student academic success?

Families play a crucial role by supporting learning at home, maintaining communication with teachers, setting high academic expectations, and providing a conducive learning environment that emphasizes the importance of education.

How can teachers effectively communicate with non-English speaking families?

Teachers can use translation services, provide bilingual materials, utilize visual aids, and involve multilingual staff or community members to facilitate communication and ensure that all families feel included and informed.

What impact do community resources have on student well-being?

Community resources, such as mental health services, after-school programs, and recreational activities, have a significant impact by providing support systems, enhancing social skills, and improving overall mental and physical health for students.

Why is it important to involve families in school decision-making?

Involving families in school decision-making is important because it fosters a sense of ownership, ensures that diverse perspectives are considered, enhances trust between families and schools, and aligns educational goals with community values.

What challenges do schools face in building strong family-school-community partnerships?

Challenges include cultural differences, varying levels of family engagement, limited resources for outreach, time constraints for families and educators, and potential communication barriers that can hinder effective collaboration.

Find other PDF article:

<https://soc.up.edu.ph/55-pitch/Book?ID=VTq29-9622&title=square-root-word-problems-worksheet.pdf>

Family School And Community Relationships

Spider Armor | Grounded Wiki | Fandom

Spider Armor is a Tier 2 armor set made for aggressive play styles. The piece effect Hasty Regen decreases the amount of stamina used when attacking, whereas the set bonus Hunter's Prowess increases players' stamina regeneration speed significantly. The sleek upgrade effect +Poison Damage, which has a 25% chance on hit to increase damage of players' poison attacks, has ...

Hyperstamina (Spider Armor) :: Grounded Grounded Discussions

Aug 1, 2020 · I didn't really know exactly what was Hyperstamina exactly as the game doesn't really tell much.. apparently increases your movement speed. Exactly 25% if wearing the full set of armor. I actually tried to run 100cm in a straight line with and without the armor and with the full spider set

is done in 12s, without armor is 16s. then I tried only using 2 pieces instead of the ...

Spider Armor | MetaForge

Jan 9, 2023 · Spider Armor is a tier 2 medium armor set that is extremely good due to the high stamina regeneration that the 2 perks give.

Grounded Armour & Effects + Sleek Effects - Basically Average

Oct 30, 2022 · Grounded Armour & Effects + Sleek Effects Last Updated October 30, 2022 By Johnny Salib / FlamingGaymer 1 Comment One of my favourite things about playing Grounded is the immense amount of versatility and customization that players will have access to in the game.

Spider Armor - Grounded Guide - IGN

Oct 15, 2022 · This page features information about the Spider Armor set in Grounded including how to craft each piece, individual stats, intrinsic perks gained while wearing

All Armor and Armor Set Bonuses in Grounded - Pro Game Guides

May 3, 2022 · Each piece of Spider Armor increases your Attack Stamina. And if you collect the whole set, you will get the bonus Hyperstamina, which will increase the speed of your Stamina regen.

Spider Armor - Grounded Wiki

Spider Armor is a Tier 2 armor set made for aggressive play styles. The piece effect Hasty Regen decreases the amount of stamina used when attacking, whereas the set bonus Hunter's Prowess increases players' stamina regeneration speed significantly. The sleek upgrade effect +Poison Damage, which has...

Status Effects - Grounded Wiki

Status Effects alter the abilities of the player under certain circumstances. These effects can be caused by a variety of factors, such as Smoothies, Armor, Creature attacks, etc. Armor Upgrade Effects are unique effects for each armor set that can be unlocked by choosing the "Sleek" path when upgrading armor at a Smithing Station. Each bonus is unique to every set or armor in the ...

Best Armor in Grounded - Gear - Gameplay - Gamer Guides

Guide to all armor sets in Grounded. Includes the best melee and ranged builds, set bonuses and sleek upgrades. Also includes how defence and resistance w...

Which Armor should I upgrade? :: Grounded Grounded Discussions

Oct 10, 2022 · Black ant is great t2 offensive armor if you play solo. That crit on block proc is really good. With sleek for hyperstamina on crit, coup de grass and parry master you'll be dishing out crits left and right while getting back stamina faster than you can spend it, especially if you pair it with a stinger spear and spider slider.

Grounded - Every Armor Set Bonus - Slyther Games

Nov 11, 2020 · The aphid slippers ("The Quickness") give a speed bonus of about 20% while each spider part gives about 10%. so something seems like a bug with the spider gear, whether its the wrong effect name on each (hyperstamina), or maybe the set bonus is accidentally being split between all 3? i dont have grub or spider sets yet.

All armor and stats - Grounded - Shacknews

Aug 5, 2020 · A table of all armor in Grounded, including buffs, materials needed to craft them, and how to get all armor recipes.

Facts About U.S. Deaths from Excessive Alcohol Use

Aug 6, 2024 · Excessive alcohol use is a leading preventable cause of death in the United States. About 178,000 people ...

Deaths From Excessive Drinking Rose in the US During Pandemic

Apr 5, 2024 · Deaths associated with excessive alcohol use have been rising over the past 20 years. But during 2020 ...

Alcohol-Related Emergencies and Deaths in the United States

Estimates suggest that alcohol played a role in at least 7.1% of emergency department visits and 17.4% of deaths ...

Leading Cause of Preventable Death: Excessive Alcohol Cons...

Mar 4, 2024 · 488 Deaths Per Day Due To Excessive Alcohol Consumption The report notes that the average number ...

Deaths: Final Data for 2020 - CDC Stacks

This report presents final 2020 data on U.S. deaths, death rates, life expectancy, infant and maternal mortality, and ...

Explore the vital role of family

[Back to Home](#)