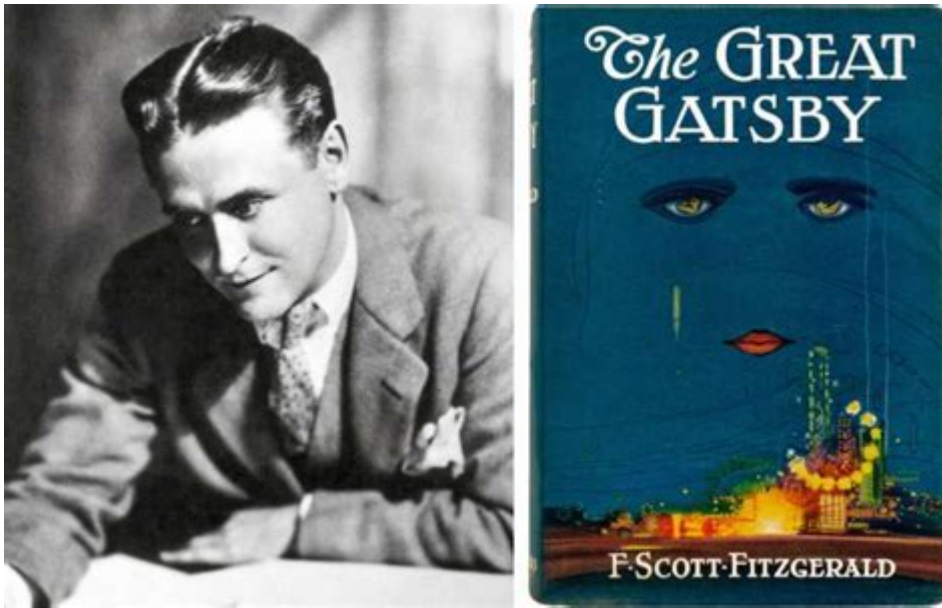


F Scott Fitzgerald Writing Style



UNDERSTANDING F. SCOTT FITZGERALD'S WRITING STYLE

F. SCOTT FITZGERALD'S WRITING STYLE IS A DISTINCTIVE BLEND OF LYRICAL PROSE, SHARP SOCIAL COMMENTARY, AND INTRICATE CHARACTER DEVELOPMENT. RENOWNED FOR HIS ABILITY TO CAPTURE THE ESSENCE OF THE JAZZ AGE, FITZGERALD'S WORK REFLECTS THE COMPLEXITIES OF AMERICAN SOCIETY DURING THE 1920s. HIS NARRATIVES OFTEN EXPLORE THEMES OF LOVE, WEALTH, AMBITION, AND THE DISILLUSIONMENT THAT ACCOMPANIES THE PURSUIT OF THE AMERICAN DREAM. THIS ARTICLE DELVES INTO THE ELEMENTS THAT CHARACTERIZE FITZGERALD'S UNIQUE STYLE, EXAMINING HIS USE OF LANGUAGE, SYMBOLISM, CHARACTER DEVELOPMENT, AND NARRATIVE TECHNIQUES.

THE LYRICAL PROSE OF FITZGERALD

FITZGERALD'S PROSE IS OFTEN DESCRIBED AS LYRICAL AND POETIC, MARKED BY A RHYTHMIC QUALITY THAT ENGAGES READERS. HE POSSESSED A REMARKABLE ABILITY TO CREATE VIVID IMAGERY WITH HIS WORDS. THIS LYRICAL QUALITY IS PARTICULARLY EVIDENT IN HIS DESCRIPTIONS OF SETTINGS AND CHARACTERS.

IMAGERY AND SYMBOLISM

FITZGERALD FREQUENTLY EMPLOYS RICH IMAGERY TO EVOKE EMOTIONS AND PAINT A PICTURE OF THE WORLD HE DESCRIBES. FOR INSTANCE, IN "THE GREAT GATSBY," THE GREEN LIGHT AT THE END OF DAISY'S DOCK SYMBOLIZES GATSBY'S UNREACHABLE DREAMS AND THE ELUSIVE NATURE OF THE AMERICAN DREAM ITSELF. THROUGH SUCH SYMBOLS, FITZGERALD INVITES READERS TO EXPLORE DEEPER MEANINGS WITHIN HIS NARRATIVES.

- **COLOR SYMBOLISM:** FITZGERALD OFTEN USES COLORS TO CONVEY THEMES AND EMOTIONS. FOR EXAMPLE, THE COLOR WHITE REPRESENTS PURITY AND INNOCENCE, WHILE THE COLOR YELLOW IS ASSOCIATED WITH WEALTH AND DECAY.
- **NATURE IMAGERY:** HE FREQUENTLY CONTRASTS NATURAL BEAUTY WITH THE ARTIFICIALITY OF HIS CHARACTERS' LIVES, HIGHLIGHTING THE TENSION BETWEEN REALITY AND ILLUSION.

USE OF FIGURATIVE LANGUAGE

FITZGERALD'S USE OF FIGURATIVE LANGUAGE ENHANCES THE EMOTIONAL DEPTH OF HIS WRITING. HE EMPLOYS VARIOUS LITERARY DEVICES SUCH AS METAPHORS, SIMILES, AND ALLITERATION TO CREATE A MORE IMMERSIVE READING EXPERIENCE. FOR EXAMPLE, IN "TENDER IS THE NIGHT," HE WRITES, "THE EARTH WAS FULL OF DREAMS, AND THE DREAMS WERE FULL OF EARTH," ILLUSTRATING THE INTERCONNECTEDNESS OF ASPIRATION AND REALITY.

CHARACTER DEVELOPMENT

THE CHARACTERS IN FITZGERALD'S WORKS ARE OFTEN MULTIDIMENSIONAL, REFLECTING THE COMPLEXITIES OF HUMAN NATURE. HE DELVES INTO THEIR INNER LIVES, MOTIVATIONS, AND CONFLICTS, MAKING THEM RELATABLE AND COMPELLING.

COMPLEX CHARACTERS

FITZGERALD'S PROTAGONISTS OFTEN GRAPPLE WITH THEIR IDENTITIES AND THE EXPECTATIONS PLACED UPON THEM BY SOCIETY. JAY GATSBY, FOR EXAMPLE, IS A SELF-MADE MILLIONAIRE WHO EMBODIES THE AMERICAN DREAM YET REMAINS PROFOUNDLY UNFULFILLED. HIS RELENTLESS PURSUIT OF DAISY BUCHANAN REPRESENTS BOTH HIS AMBITION AND HIS TRAGIC FLAW—AN INABILITY TO ACCEPT THE REALITY OF HIS CIRCUMSTANCES.

CHARACTER RELATIONSHIPS

THE RELATIONSHIPS BETWEEN CHARACTERS IN FITZGERALD'S NOVELS ARE INTRICATE AND OFTEN FRAUGHT WITH TENSION. HE EXPLORES THEMES OF LOVE, BETRAYAL, AND SOCIAL STATUS, REVEALING HOW THESE DYNAMICS SHAPE INDIVIDUAL DESTINIES. THE LOVE TRIANGLE BETWEEN GATSBY, DAISY, AND TOM BUCHANAN SERVES AS A MICROCOSM OF THE BROADER SOCIETAL ISSUES FITZGERALD CRITIQUES THROUGHOUT HIS WORK, SUCH AS CLASS DISPARITY AND MORAL DECAY.

NARRATIVE TECHNIQUES

FITZGERALD'S NARRATIVE STYLE IS NOTABLE FOR ITS INNOVATIVE TECHNIQUES, WHICH CONTRIBUTE TO THE OVERALL IMPACT OF HIS STORIES.

FIRST-PERSON NARRATION

IN "THE GREAT GATSBY," FITZGERALD EMPLOYS A FIRST-PERSON NARRATOR, NICK CARRAWAY, WHOSE PERSPECTIVE SHAPES THE READER'S UNDERSTANDING OF THE STORY. NICK'S OBSERVATIONS AND REFLECTIONS PROVIDE INSIGHT INTO THE CHARACTERS' MOTIVATIONS AND THE SOCIAL MILIEU OF THE TIME. HIS UNRELIABLE NARRATION INVITES READERS TO QUESTION THE AUTHENTICITY OF THE EVENTS AND CHARACTERS HE DESCRIBES.

NONLINEAR STORYTELLING

FITZGERALD OFTEN USES NONLINEAR STORYTELLING TO CREATE SUSPENSE AND DEVELOP CHARACTER ARCS. IN "TENDER IS THE NIGHT," THE NARRATIVE SHIFTS BETWEEN DIFFERENT TIME PERIODS, GRADUALLY REVEALING THE BACKSTORY OF DICK DIVER AND HIS DETERIORATING MARRIAGE TO NICOLE. THIS TECHNIQUE ALLOWS FITZGERALD TO EXPLORE THE COMPLEXITIES OF MEMORY

AND THE PASSAGE OF TIME.

THEMATIC EXPLORATION

FITZGERALD'S WRITING STYLE IS DEEPLY INTERTWINED WITH THE THEMES HE EXPLORES. HIS WORKS OFTEN REFLECT THE MORAL AMBIGUITY AND DISILLUSIONMENT OF THE JAZZ AGE, AS WELL AS THE QUEST FOR IDENTITY AND MEANING IN A RAPIDLY CHANGING SOCIETY.

THE AMERICAN DREAM

ONE OF THE CENTRAL THEMES IN FITZGERALD'S WORK IS THE CRITIQUE OF THE AMERICAN DREAM. THROUGH CHARACTERS LIKE GATSBY, FITZGERALD ILLUSTRATES THE IDEA THAT THE PURSUIT OF WEALTH AND STATUS CAN LEAD TO EMPTINESS AND DESPAIR. GATSBY'S LAVISH PARTIES AND OPULENT LIFESTYLE ULTIMATELY MASK HIS PROFOUND LONELINESS, HIGHLIGHTING THE HOLLOWNESS OF MATERIAL SUCCESS.

SOCIAL CLASS AND INEQUALITY

FITZGERALD'S EXPLORATION OF SOCIAL CLASS IS ANOTHER PROMINENT THEME IN HIS WRITING. HE VIVIDLY DEPICTS THE LIVES OF BOTH THE WEALTHY ELITE AND THE STRUGGLING LOWER CLASSES, REVEALING THE STARK CONTRASTS AND TENSIONS THAT EXIST WITHIN AMERICAN SOCIETY. THE DIVIDE BETWEEN EAST EGG (REPRESENTING OLD MONEY) AND WEST EGG (SYMBOLIZING NEW MONEY) IN "THE GREAT GATSBY" SERVES AS A METAPHOR FOR THESE SOCIAL DIVISIONS.

CONCLUSION

IN CONCLUSION, **F. SCOTT FITZGERALD'S WRITING STYLE** IS A RICH TAPESTRY WOVEN WITH LYRICAL PROSE, COMPLEX CHARACTERS, AND INNOVATIVE NARRATIVE TECHNIQUES. HIS ABILITY TO CAPTURE THE ESSENCE OF THE JAZZ AGE, COUPLED WITH HIS PROFOUND INSIGHTS INTO THE HUMAN EXPERIENCE, HAS SOLIDIFIED HIS PLACE AS ONE OF AMERICA'S GREATEST LITERARY FIGURES. THROUGH HIS EXPLORATION OF THEMES SUCH AS THE AMERICAN DREAM, SOCIAL CLASS, AND THE INTRICACIES OF HUMAN RELATIONSHIPS, FITZGERALD CONTINUES TO RESONATE WITH READERS TODAY. HIS WORKS INVITE US TO REFLECT ON OUR OWN ASPIRATIONS, DESIRES, AND THE OFTEN-UNATTAINABLE NATURE OF THE DREAMS WE PURSUE. AS WE DELVE INTO THE PAGES OF FITZGERALD'S NOVELS, WE ARE REMINDED OF THE TIMELESS TRUTHS HE SO ELOQUENTLY ARTICULATED, MAKING HIS WRITING STYLE NOT ONLY A REFLECTION OF HIS ERA BUT ALSO A LENS THROUGH WHICH WE CAN EXAMINE OUR OWN LIVES.

FREQUENTLY ASKED QUESTIONS

WHAT ARE THE KEY CHARACTERISTICS OF F. SCOTT FITZGERALD'S WRITING STYLE?

F. SCOTT FITZGERALD'S WRITING STYLE IS CHARACTERIZED BY LYRICAL PROSE, RICH IMAGERY, AND A FOCUS ON THEMES OF WEALTH, LOVE, AND THE AMERICAN DREAM. HE OFTEN USES SYMBOLISM AND INTRICATE CHARACTER DEVELOPMENT TO EXPLORE COMPLEX SOCIAL ISSUES.

HOW DOES FITZGERALD USE SYMBOLISM IN HIS WORKS?

FITZGERALD EMPLOYS SYMBOLISM EXTENSIVELY, WITH OBJECTS LIKE THE GREEN LIGHT IN 'THE GREAT GATSBY' REPRESENTING UNATTAINABLE DREAMS AND THE VALLEY OF ASHES SYMBOLIZING MORAL DECAY. HIS USE OF SYMBOLS ADDS DEPTH TO HIS NARRATIVES AND ENHANCES THEMATIC EXPLORATION.

120cm [] 3-4cm 4cm 30 ...

bigbang _ ...

Aug 15, 2014 · bigbang BigBang Ye the finally I realize that I'm nothing without you I was so wrong forgive me ah ah ah ah- [V

-

2011 1 ...

edge -

AutoControl: Custom keyboard shortcuts & Mouse gestures for Chrome Actions Trigger Action Edge Action

-

...

-

2011 1 ...

-

1 A 2 B 3 C 4 D 5 ...

A',B',C'_

Oct 11, 2011 · A',B',C' Ctrl+Z

Φ _

Φ Φ 1 Excel 2 3 “ ” 4 ...

Explore F. Scott Fitzgerald's writing style

[Back to Home](#)