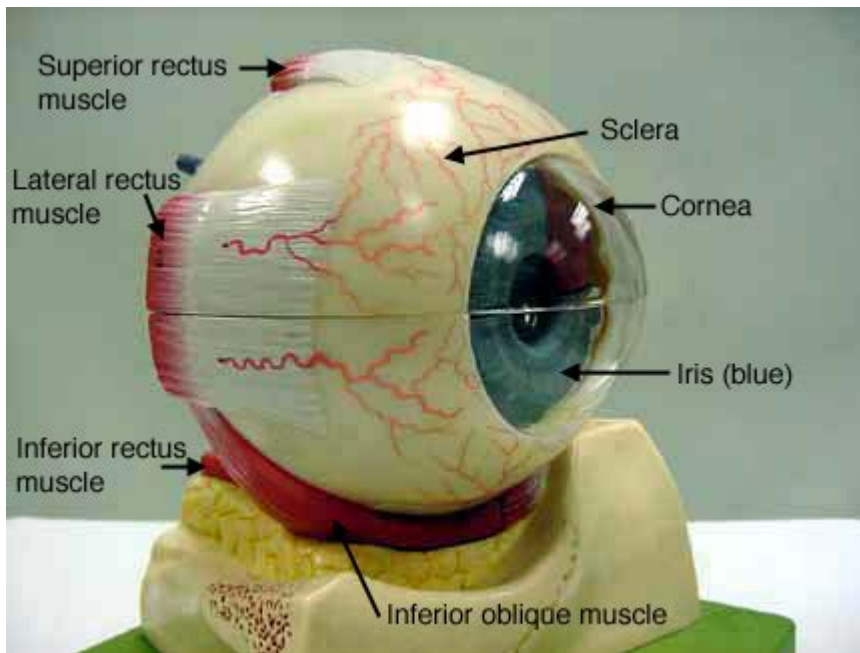


Eye Anatomy Model Labeled



Eye anatomy model labeled is an essential tool for understanding the complex structure of the human eye. Whether you are a medical student, a professional in the healthcare field, or simply someone curious about how vision works, a detailed look at the anatomy of the eye can provide valuable insights. This article delves into the various components of the eye, their functions, and how they contribute to the overall process of vision.

Understanding Eye Anatomy

The human eye is a remarkable organ, intricately designed to process visual information. It consists of several parts, each playing a unique role in enabling sight. Here, we will explore the key components of the eye, supplemented with a labeled model that illustrates these structures.

Key Components of the Eye

1. **Cornea:** The transparent front layer of the eye, the cornea helps focus light onto the retina. It also serves as a protective barrier against dirt, germs, and other harmful matter.
2. **Iris:** The colored part of the eye, the iris controls the size of the pupil and, consequently, the amount of light that enters the eye. It is made of muscle that can expand or contract.
3. **Pupil:** The black circular opening in the center of the iris, the pupil changes size depending on the light conditions. In bright light, it constricts to reduce light intake, while in dim light, it dilates to allow more light in.
4. **Lens:** Located behind the pupil, the lens is a flexible structure that adjusts its shape to focus light

on the retina. This process is known as accommodation.

5. **Retina:** The innermost layer of the eye, the retina contains photoreceptor cells (rods and cones) that convert light into neural signals. These signals are then sent to the brain via the optic nerve.

6. **Optic Nerve:** This nerve transmits visual information from the retina to the brain, where it is interpreted as images.

7. **Sclera:** The white part of the eye, the sclera is a tough outer layer that provides protection and structure to the eye.

8. **Choroid:** Situated between the retina and the sclera, the choroid is a layer filled with blood vessels that supply nutrients to the eye and absorb excess light.

9. **Vitreous Humor:** The clear gel-like substance filling the space between the lens and the retina, the vitreous humor helps maintain the eye's shape and provides support.

10. **Aqueous Humor:** This clear fluid fills the space between the cornea and the lens. It helps maintain intraocular pressure and provides nutrients to the avascular structures of the eye.

The Function of Each Component

Understanding the labeled eye anatomy model is not just about identifying parts; it's also about grasping how these components work together to facilitate vision. Here's a breakdown of the functions of each part:

- **Cornea:** Refracts light and begins the process of focusing.
- **Iris:** Regulates light entry and protects the retina.
- **Pupil:** Adjusts size based on light conditions.
- **Lens:** Fine-tunes focus for clear vision.
- **Retina:** Converts light into signals for the brain.
- **Optic Nerve:** Carries visual information to the brain.
- **Sclera:** Provides protection and maintains the shape of the eye.
- **Choroid:** Supplies blood to the eye and absorbs excess light.
- **Vitreous Humor:** Supports the retina and maintains eye shape.
- **Aqueous Humor:** Provides nutrients and maintains intraocular pressure.

How the Eye Processes Visual Information

The process of vision begins when light enters the eye through the cornea. As the light travels through the pupil, it is further focused by the lens, which adjusts its curvature to ensure a clear image on the retina. The retina then converts this light into electrical signals, which are transmitted to the brain through the optic nerve. The brain processes these signals, allowing us to perceive and interpret the world around us.

Common Eye Conditions Related to Anatomy

Understanding the anatomy of the eye is crucial for recognizing various eye conditions that can arise due to structural issues. Here are some common conditions:

1. Myopia (Nearsightedness): Occurs when the eyeball is too long or the cornea is too curved, causing distant objects to appear blurry.
2. Hyperopia (Farsightedness): Happens when the eyeball is too short or the cornea is too flat, resulting in difficulty focusing on close objects.
3. Astigmatism: A condition caused by an irregularly shaped cornea or lens, leading to distorted or blurred vision at all distances.
4. Cataracts: A clouding of the lens, which can lead to blurred vision and is often related to aging.
5. Glaucoma: A group of eye conditions that damage the optic nerve, often due to high intraocular pressure.

The Importance of Eye Health

Maintaining eye health is essential for preserving vision and preventing eye diseases. Regular eye check-ups can help detect issues early. Here are some tips to promote eye health:

- Get regular comprehensive eye exams.
- Wear sunglasses to protect against UV light.
- Maintain a healthy diet rich in fruits and vegetables.
- Limit screen time and take breaks to reduce eye strain.
- Stay hydrated and avoid smoking.

Conclusion

A thorough understanding of the **eye anatomy model labeled** provides valuable knowledge about how our eyes function and highlights the importance of eye health. Whether you are studying for a medical exam or simply curious about how vision works, knowing the parts of the eye and their functions is crucial. By prioritizing eye care and being aware of potential issues, we can maintain better vision and overall eye health throughout our lives.

Frequently Asked Questions

What are the main components of an eye anatomy model?

An eye anatomy model typically includes components such as the cornea, iris, pupil, lens, retina, vitreous humor, and optic nerve, each labeled to show their specific locations and functions.

How can an eye anatomy model help in medical education?

Eye anatomy models provide a visual aid for students and professionals to understand the complex structure of the eye, facilitating better comprehension of ocular diseases, surgical procedures, and anatomy.

What is the importance of labeling in eye anatomy models?

Labeling in eye anatomy models is crucial as it helps learners identify and memorize the different parts of the eye, their locations, and their functions, enhancing retention and understanding.

Are there different types of eye anatomy models available?

Yes, there are various types of eye anatomy models, including 3D models, interactive digital models, and cross-sectional models, each designed to cater to different learning styles and educational needs.

How can eye anatomy models aid in patient education?

Eye anatomy models can be used in patient education to visually explain eye conditions and treatments, making it easier for patients to understand their diagnoses and the procedures they may undergo.

Find other PDF article:

<https://soc.up.edu.ph/05-pen/Book?docid=jWd68-1672&title=amoeba-sisters-autotrophs-and-heterotrophs-answer-key.pdf>

[Eye Anatomy Model Labeled](#)

Brampton - Prism Eye Institute

We are conveniently located at the Prism Eye institute. If you are using a screen reader and are having problems using this website, please call (905) 456-3937. ©2025 Prism Eye Institute. All ...

Eyeology Optometry & Eyewear - Your Local Eye Doctor

Comprehensive eye care consultations, exams and treatments for children aged below 16 years. Choose lens and eyewear that suits your lifestyle. The right frame and lens will help you live ...

Eyes: How They Work, Anatomy & Common Conditions

Nov 15, 2023 · Most people are born with two eyes. Working together, they give you a field of view about 200 degrees wide and 135 degrees tall. When your eyes work together correctly, ...

Bramalea Optometric | Brampton Optometric Clinic Proudly ...

Bramalea Optometric Clinic has been serving the eye care needs of the Brampton community for over 40 years! We provide comprehensive and individualized eye care for you and your family ...

Home - 20/20 Optometry

We offer uncompromised and detailed eye examinations to detect, treat and manage many eye conditions. Visual field tests map a patient's entire central as well as peripheral scope of vision ...

Leading Optometrist In Brampton | Thompson Family Optometry

Learn more about what your eye doctor will screen for, what to expect at your appointment, some of the advanced technology we use, and special considerations for pediatric and infant eye care.

Vivid Eyes | Eye Doctor Brampton | Eye Exams & Designer Glasses

Visit Vivid Eyes in Ontario for eye exams, scleral lenses, ortho-k, designer glasses, and myopia management. Expert care from a trusted Brampton optometrist.

Home | Mahil Optometry

We have been providing Optometric services in Brampton, Ontario for over 30 years. Our doctors and staff are committed to providing exceptional eye and vision care. Our goal is to form life ...

Divine Eye Care | Local Eye Doctor in Brampton, Ontario

Experience exceptional Brampton eye care at Divine Eye Care. Our trusted optometrist provide eye exams, eyewear, and vision solutions. Book your visit today!

A Detailed Look at the Eye - Opto

Jan 14, 2025 · Surrounding the cornea is the white parts of the eye called the sclera, which wraps around and provides the round structure of the eyeball. Behind the cornea is a fluid-filled ...

Brampton - Prism Eye Institute

We are conveniently located at the Prism Eye institute. If you are using a screen reader and are having problems using this website, please call (905) 456-3937. ©2025 Prism Eye Institute. All ...

Eyeology Optometry & Eyewear - Your Local Eye Doctor

Comprehensive eye care consultations, exams and treatments for children aged below 16 years. Choose lens and eyewear that suits your lifestyle. The right frame and lens will help you live and ...

Eyes: How They Work, Anatomy & Common Conditions

Nov 15, 2023 · Most people are born with two eyes. Working together, they give you a field of view about 200 degrees wide and 135 degrees tall. When your eyes work together correctly, they give ...

Bramalea Optometric | Brampton Optometric Clinic Proudly ...

Bramalea Optometric Clinic has been serving the eye care needs of the Brampton community for over 40 years! We provide comprehensive and individualized eye care for you and your family in ...

Home - 20/20 Optometry

We offer uncompromised and detailed eye examinations to detect, treat and manage many eye conditions. Visual field tests map a patient's entire central as well as peripheral scope of vision ...

Leading Optometrist In Brampton | Thompson Family Optometry

Learn more about what your eye doctor will screen for, what to expect at your appointment, some of the advanced technology we use, and special considerations for pediatric and infant eye care.

Vivid Eyes | Eye Doctor Brampton | Eye Exams & Designer Glasses

Visit Vivid Eyes in Ontario for eye exams, scleral lenses, ortho-k, designer glasses, and myopia management. Expert care from a trusted Brampton optometrist.

Home | Mahil Optometry

We have been providing Optometric services in Brampton, Ontario for over 30 years. Our doctors and staff are committed to providing exceptional eye and vision care. Our goal is to form life-long ...

Divine Eye Care | Local Eye Doctor in Brampton, Ontario

Experience exceptional Brampton eye care at Divine Eye Care. Our trusted optometrist provide eye exams, eyewear, and vision solutions. Book your visit today!

A Detailed Look at the Eye - Opto

Jan 14, 2025 · Surrounding the cornea is the white parts of the eye called the sclera, which wraps around and provides the round structure of the eyeball. Behind the cornea is a fluid-filled space ...

Explore our comprehensive eye anatomy model labeled guide. Discover how each part functions and enhances your understanding of the human eye. Learn more!

[Back to Home](#)