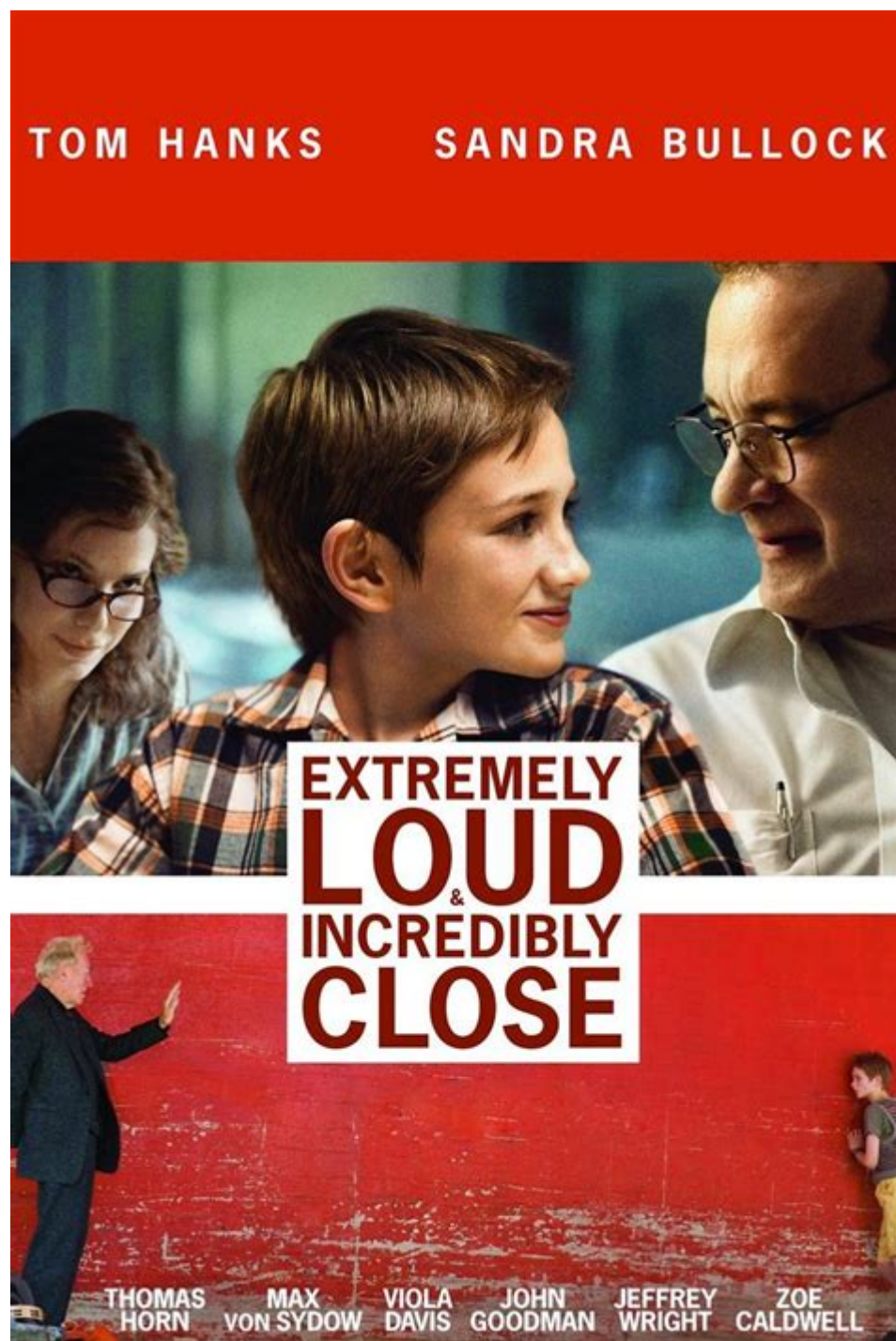


Extremely Loud And Incredibly Close Characters



Extremely loud and incredibly close is a novel by Jonathan Safran Foer that intricately weaves together the lives of its characters, exploring themes of grief, loss, and the quest for connection. The book tells the story of a young boy named Oskar Schell, who embarks on a poignant journey after the death of his father in the 9/11 attacks. Through his quest, we meet a diverse cast of characters, each grappling with their own experiences of love and loss. This article will delve into the main characters of the novel, their backgrounds, relationships, and the significance they hold in Oskar's journey.

Oskar Schell: The Protagonist

Oskar Schell is a precocious 9-year-old boy who navigates the complexities of his world with a unique perspective. His character is marked by intelligence, curiosity, and an overwhelming sense of grief following the death of his father, Thomas Schell.

Background and Personality

- Intelligence: Oskar is highly intelligent, displaying a keen aptitude for inventiveness. He often engages in elaborate thought processes and has a fascination with science and technology.**
- Curiosity: His inquisitive nature drives him to seek answers to unanswerable questions, which is central to his quest throughout the novel.**
- Grief: The loss of his father leaves a profound impact on Oskar, which manifests in various ways, including anxiety, self-isolation, and a longing for understanding.**

The Quest for Closure

Oskar's journey begins when he discovers a mysterious

key in his father's belongings. He believes the key is a clue left by his father and embarks on a mission to find the lock it opens. This quest serves as a metaphor for his search for closure and understanding of his father's death.

Thomas Schell: The Father

Thomas Schell is a pivotal character despite his physical absence throughout most of the novel. His life and death significantly shape Oskar's character and emotional landscape.

Life and Legacy

- Role as a Father: Thomas is portrayed as a loving and supportive father who shares a deep bond with Oskar. Their relationship is characterized by playful and profound conversations that stimulate Oskar's intellectual curiosity.**
- Impact of His Death: Thomas's death in the 9/11 attacks serves as a catalyst for the novel's events. Oskar's inability to process this tragedy fuels his quest and shapes his interactions with other characters.**

Memory and Mourning

Through flashbacks and Oskar's memories, readers gain insight into Thomas's character. The memories serve as a reminder of the love and joy that Oskar experienced, contrasting sharply with the pain of his absence.

Grandma: The Matriarch

Oskar's grandmother plays an essential role in his life, providing support and love as he navigates his grief.

The Complexity of Her Character

- Background: Oskar's grandmother is a Holocaust survivor, and her experiences add depth to her character. Her past informs her resilience and her approach to life and loss.**
- Relationship with Oskar: She serves as a stabilizing force in Oskar's life, attempting to comfort him while grappling with her own pain. Their relationship is characterized by a mix of tenderness and tension, particularly as they both deal with the fallout of Thomas's death.**

Connection to the Past

Grandma's history influences her relationship with Oskar. She often reflects on her own losses and traumas, which helps to create a bridge of understanding between her and Oskar as they both seek to cope with their respective grief.

The "Renter": An Unexpected Companion

The "Renter," also known as the man living in Oskar's grandparents' apartment, adds another layer of complexity to the story. He is a mysterious figure who has his own story of loss.

A Shared Grief

- Background: The Renter is a silent man with a traumatic past, having lost his lover during the war. His experiences parallel those of Oskar, creating a bond between the two characters.**
- Role in Oskar's Journey: The Renter becomes an ally in Oskar's quest. Despite his initial reticence, he offers insight and companionship, helping Oskar confront his grief.**

The Importance of Connection

Their relationship symbolizes the need for human connection in the face of overwhelming loss. The Renter's presence in Oskar's life reinforces the idea that shared experiences can lead to healing.

Others in Oskar's Journey

The novel is filled with a variety of supporting characters who enrich Oskar's quest and highlight different aspects of grief and recovery.

Supporting Characters

- 1. Mr. Black: An elderly man who becomes a friend to Oskar during his journey. His own history of loss and isolation resonates with Oskar, and he serves as a mentor figure.**
- 2. The Stranger: A woman Oskar encounters who briefly helps him on his quest. Her character emphasizes the importance of fleeting connections in the journey of healing.**
- 3. Oskar's Mother: She is portrayed as a loving but overwhelmed parent dealing with her own grief. Her relationship with Oskar is strained at times, reflecting the challenges of parenting a child who is grappling with profound loss.**

Thematic Significance

These characters represent different facets of grief and survival. Each interaction Oskar has with them serves to deepen his understanding of love, loss, and the importance of human connection.

Conclusion: The Interconnectedness of Grief

In extremely loud and incredibly close, Jonathan Safran Foer crafts a poignant narrative that delves into the complexities of grief through the eyes of young Oskar Schell. Each character, whether directly connected to Oskar or not, plays a significant role in illustrating the multifaceted nature of loss and the importance of connection. Oskar's journey is a testament to the resilience of the human spirit, showcasing how individuals can navigate their grief by reaching out to others. Through the lens of Oskar's experiences, readers are invited to reflect on their own relationships and the impacts of love and loss in their lives.

Ultimately, the novel emphasizes that while grief can be isolating, the connections we forge with others can provide solace, understanding, and hope, making the journey through sorrow a shared human experience.

Frequently Asked Questions

Who is Oskar Schell in 'Extremely Loud and Incredibly Close'?

Oskar Schell is the protagonist, a young boy who is deeply affected by the death of his father in the 9/11 attacks. He is intelligent, imaginative, and struggles with grief and his quest for closure.

What role does Thomas Schell play in the story?

Thomas Schell is Oskar's father, whose death in the 9/11 attacks profoundly impacts Oskar and serves as the catalyst for Oskar's journey throughout the novel.

How does Oskar's mother, Linda Schell, cope with her husband's death?

Linda Schell is portrayed as a loving but overwhelmed mother who is trying to support Oskar while also dealing with her own grief and the challenges of single parenthood.

Who is the mysterious renter in Oskar's apartment?

The mysterious renter, known as the 'Renter,' is an elderly man who lives with Oskar's family. He has a complex backstory and plays a crucial role in helping Oskar navigate his emotions.

What is the significance of the key that Oskar finds?

The key symbolizes Oskar's quest for answers and closure regarding his father's death. It leads him on a journey to meet various people connected to the key, representing his search for understanding.

What themes are explored through the character of Oskar Schell?

Oskar's character explores themes of grief, loss, the quest for meaning, and the impact of trauma, particularly in the context of a young child coping with the aftermath of a tragedy.

How does the character of the 'Grandfather' contribute to the narrative?

The 'Grandfather' is Oskar's paternal grandfather, who has his own story of loss and trauma, reflecting the intergenerational effects of grief and the complexities of familial relationships.

In what way does Oskar's relationship with his mother evolve throughout the novel?

Oskar's relationship with his mother evolves from one of dependence to a more complex understanding of their shared grief, as they learn to communicate and support each other amidst their struggles.

What are some coping mechanisms Oskar uses to deal with his father's death?

Oskar uses various coping mechanisms, including his imaginative play, searching for answers, and engaging with others in his quest, as he tries to make sense of his father's absence.

How does the narrative structure of 'Extremely Loud and Incredibly Close' enhance the story of its characters?

The narrative structure, which includes multiple perspectives and intertwining timelines, enhances the

emotional depth of the characters, allowing readers to understand their backgrounds, motivations, and the interconnectedness of their experiences.

Find other PDF article:

<https://soc.up.edu.ph/57-chart/pdf?ID=Vtg51-9277&title=take-off-meaning-in-business.pdf>

Extremely Loud And Incredibly Close Characters

extreme **extremely** -

Oct 21, 2024 · **extreme** **extremely**
extremely

...

Terribly vs. Extremely - WordReference Forums

Nov 10, 2024 · Hi everyone! Could you please tell me which adverb is correct in the following sentence? And why? *Smoking is terribly/ extremely common among young people.

an/a extremely - WordReference Forums

Oct 7, 2010 · Hi! Is it correct to say an extremely busy month or a extremely busy month? Because I know that when you have a vowel sound you need to use an,

so I'm not sure about ...

absolutely, extremely, exactly, actually [WordReference Forums](#)

Dec 18, 2024 · absolutely [WordReference Forums](#)

“absolutely true” “absolutely” [WordReference Forums](#) ...

extremely,thoroughly,absolutely,completely [WordReference Forums](#)?

Dec 28, 2024 ·

extremely,thoroughly,absolutely,completely [WordReference Forums](#)

?Extremely, [WordReference Forums](#) ...

dramatically, significantly, extremely, ultimately - WordReference ...

May 28, 2014 · Ok, for instance, my hometown has changed dramatically/ significantly/ extremely/ ultimately Or that girl is dramatically/ significantly/ extremely/ ultimately beautiful.

Extremely saying - WordReference Forums

Nov 18, 2010 · The textbook says: Extremely saying, commercials are the symbol of the times because commercials sometimes make words that are going around and we can know what ...

Seriously/Extremely sensitive skin - WordReference Forums

Jun 10, 2025 · Can your skin be "Seriously sensitive" to the sun in English? Is this the right collocation?, I have

following scale: "Not at all sensitive", "Quite...

extremely/exceedingly

Jan 15, 2013 · extremely/exceedingly
exceedingly exceed " " exceedingly
...

Absolutely/Utterly - Highly/Extremely | WordReference Forums

Mar 19, 2011 · Hello, I started reading the book English Collocations in Use. In the 6th lesson it shows what words I could use instead of "very". Can you tell me what is the difference ...

extreme/extremely -

Oct 21, 2024 · extreme/extremely
extremely
...

Terribly vs. Extremely - WordReference Forums

Nov 10, 2024 · Hi everyone! Could you please tell me which adverb is correct in the following sentence? And why? *Smoking is terribly/ extremely common among young people.

an/a extremely - WordReference Forums

Oct 7, 2010 · Hi! Is it correct to say an extremely busy month or a extremely busy month? Because I know that when you have a vowel sound you need to use an, so I'm not sure about ...

absolutely, extremely, exactly, actually [WordReference Forums](#)

Dec 18, 2024 · absolutely [WordReference Forums](#)

“absolutely true” “absolutely” [WordReference Forums](#) ...

extremely,thoroughly,absolutely,completely [WordReference Forums](#)?

Dec 28, 2024 ·

extremely,thoroughly,absolutely,completely [WordReference Forums](#)

?Extremely, [WordReference Forums](#) ...

dramatically, significantly, extremely, ultimately - WordReference ...

May 28, 2014 · Ok, for instance, my hometown has changed dramatically/ significantly/ extremely/ ultimately Or that girl is dramatically/ significantly/ extremely/ ultimately beautiful.

Extremely saying - WordReference Forums

Nov 18, 2010 · The textbook says: Extremely saying, commercials are the symbol of the times because commercials sometimes make words that are going around and we can know what ...

Seriously/Extremely sensitive skin - WordReference Forums

Jun 10, 2025 · Can your skin be "Seriously sensitive" to the sun in English? Is this the right collocation?, I have following scale: "Not at all sensitive", "Quite...

extremely **exceedingly** _____

Jan 15, 2013 · extremely exceedingly _____
_____ **exceedingly** _____ **exceed** _____ “_____” _____ **exceedingly** _____
_____ ...

Absolutely/Utterly - Highly/Extremely | WordReference Forums

Mar 19, 2011 · Hello, I started reading the book English Collocations in Use. In the 6th lesson it shows what words I could use instead of "very". Can you tell me what is the difference ...

Explore the diverse 'Extremely Loud and Incredibly Close' characters and their profound connections. Discover how each character shapes the narrative. Learn more!

[Back to Home](#)