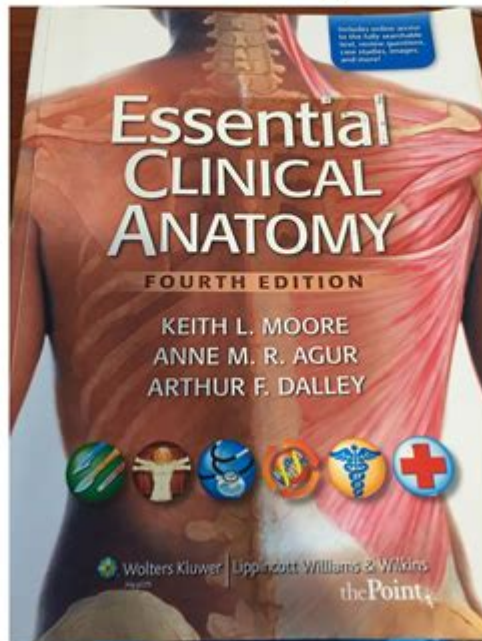


Essential Clinical Anatomy 4th Edition Test Bank

Essential Clinical Anatomy, 4th Edition



Description :

Essential Clinical Anatomy, 4th Edition

Essential Clinical Anatomy 4th Edition Test Bank is a valuable resource for students and professionals in the fields of medicine and allied health. As the demand for proficient healthcare practitioners continues to grow, having a solid foundation in clinical anatomy becomes paramount. The test bank associated with "Essential Clinical Anatomy" serves not only as a study aid but also as a comprehensive tool to assess understanding and application of anatomical concepts in clinical settings. This article aims to explore the features, contents, and benefits of utilizing the Essential Clinical Anatomy 4th Edition Test Bank.

Overview of Essential Clinical Anatomy

Essential Clinical Anatomy, written by Keith L. Moore, Arthur F. Dalley, and Anne M. R. Agur, is a textbook that provides an in-depth understanding of human anatomy with a focus on clinical relevance. The 4th edition includes updated content, illustrations, and clinical correlations to enhance learning. Its structured approach to anatomy encompasses both the basic science and its application in clinical practice, making it a preferred choice for medical students and professionals.

Key Features of the 4th Edition

The 4th edition of Essential Clinical Anatomy includes several features that enhance its educational value:

1. **Clear Illustrations:** The textbook is renowned for its high-quality illustrations that provide visual clarity on complex anatomical structures.
2. **Clinical Correlations:** Each chapter includes clinical cases that link basic anatomy to real-world medical scenarios, reinforcing the importance of anatomical knowledge in patient care.
3. **Concise Text:** The authors have presented information in a straightforward manner, allowing readers to grasp essential concepts without overwhelming detail.
4. **Review Questions:** At the end of each chapter, review questions reinforce key concepts and encourage self-assessment.

Importance of the Test Bank

The Essential Clinical Anatomy 4th Edition Test Bank is an invaluable adjunct to the textbook. It consists of a collection of assessment questions designed to help students evaluate their understanding of the material. The test bank serves several important functions:

1. **Self-Assessment:** Students can use the test bank to assess their knowledge and identify areas that require further study.
2. **Exam Preparation:** The questions mirror the format and content of examinations, providing a realistic practice environment.
3. **Reinforcement of Learning:** Regular testing helps reinforce learned material, making it easier to retain information long-term.
4. **Diverse Question Types:** The test bank includes various question formats, such as multiple-choice, true/false, and short answer, catering to different learning styles.

Contents of the Test Bank

The test bank comprises a wide variety of questions that cover all major topics included in the "Essential Clinical Anatomy" textbook. The following are some of the key areas addressed in the test bank:

1. General Anatomy:
 - Anatomical terminology
 - Planes and orientations
 - Anatomical variations
2. Musculoskeletal System:
 - Bones and joints
 - Muscles and movement
 - Common musculoskeletal injuries
3. Nervous System:
 - Central and peripheral nervous systems
 - Neuroanatomy
 - Clinical considerations in neurology
4. Cardiovascular System:
 - Anatomy of the heart and major blood vessels
 - Coronary circulation
 - Pathophysiology of cardiovascular diseases
5. Respiratory System:
 - Anatomy of the respiratory tract
 - Mechanisms of breathing
 - Common respiratory conditions
6. Digestive System:
 - Anatomy of the gastrointestinal tract
 - Accessory organs of digestion
 - Understanding of digestive disorders
7. Urinary System:
 - Anatomy of the kidneys and urinary tract
 - Functions of the renal system
 - Common urinary disorders
8. Reproductive System:
 - Male and female reproductive anatomy
 - Developmental anatomy
 - Reproductive health issues
9. Endocrine System:
 - Hormonal regulation and glandular structures
 - Clinical implications of endocrine disorders
 - Interactions between endocrine and other systems

Utilizing the Test Bank Effectively

To maximize the benefits of the Essential Clinical Anatomy 4th Edition Test Bank, students should adopt effective study strategies. Here are some tips:

1. **Regular Practice:** Schedule regular sessions to take practice quizzes from the test bank to reinforce learning and improve retention.
2. **Review Incorrect Answers:** After each quiz, review incorrect answers to understand mistakes and clarify misconceptions.
3. **Group Study:** Consider studying with peers and using the test bank as a basis for discussion. This collaborative approach enhances understanding through shared knowledge.
4. **Integrate with Textbook:** Use the test bank questions in conjunction with the textbook. After studying a chapter, attempt the related questions to evaluate comprehension.
5. **Simulate Exam Conditions:** Occasionally, take quizzes under timed conditions to prepare for the pressure of actual exams.

Additional Resources

In addition to the test bank, students can benefit from supplementary resources to enhance their understanding of clinical anatomy:

- **Online Resources:** Websites and platforms that offer interactive quizzes, videos, and additional anatomical diagrams can complement textbook learning.
- **Anatomy Apps:** Mobile applications that provide 3D models of human anatomy can help visualize structures and their relationships.
- **Study Groups:** Joining or forming study groups allows for collaborative learning, where members can teach each other and share insights.

Conclusion

The Essential Clinical Anatomy 4th Edition Test Bank is a critical resource for anyone pursuing a career in health sciences. With its comprehensive coverage of anatomical concepts and clinical applications, it not only aids in academic success but also prepares students for real-world medical scenarios. By utilizing the test bank effectively and integrating it with the textbook and additional resources, students can develop a thorough understanding of clinical anatomy, ultimately enhancing their clinical skills and patient care capabilities. As healthcare continues to evolve, a strong grasp of anatomy remains a cornerstone of effective practice, making resources like the Essential Clinical Anatomy test bank indispensable for future practitioners.

Frequently Asked Questions

What is the primary focus of the 'Essential Clinical Anatomy 4th edition' test bank?

The test bank primarily focuses on assessing the understanding of clinical anatomy concepts and their application in medical practice.

How can students access the 'Essential Clinical Anatomy 4th edition' test bank?

Students can access the test bank through educational institutions, online academic platforms, or by purchasing it directly from the publisher.

What types of questions are included in the 'Essential Clinical Anatomy 4th edition' test bank?

The test bank includes multiple-choice questions, fill-in-the-blank questions, and case-based questions that challenge the application of clinical anatomy knowledge.

Is the 'Essential Clinical Anatomy 4th edition' test bank suitable for all medical students?

Yes, the test bank is designed for medical students, nursing students, and other health profession students who need a solid understanding of clinical anatomy.

What are the benefits of using the test bank for exam preparation?

Using the test bank helps reinforce learning, identify knowledge gaps, and improve test-taking skills by providing practice questions similar to those found on actual exams.

Are there any additional resources included with the 'Essential Clinical Anatomy 4th edition' test bank?

Yes, the test bank often comes with additional resources like study guides, lecture notes, and access to online quizzes to enhance learning.

How does the 'Essential Clinical Anatomy 4th edition' test bank align with current medical education standards?

The test bank is regularly updated to reflect current medical education standards, ensuring that the questions are relevant to modern clinical

practices and anatomical knowledge.

Find other PDF article:

<https://soc.up.edu.ph/07-post/files?docid=jBL03-1078&title=arithmetic-series-worksheet-with-answers.pdf>

Essential Clinical Anatomy 4th Edition Test Bank

2025 [Download Essential Clinical Anatomy 4th Edition Test Bank PDF](#)

May 21, 2025 · [Download Essential Clinical Anatomy 4th Edition Test Bank PDF](#) ...

[FEAR OF GOD](#) [essentials](#) [- PDF](#)

[Fear of god](#) [ESSENTIALS](#) [essentials](#) [- PDF](#) [LOGO](#) [supreme](#) [palace](#) ...

2025 [JBL GO](#) [JBL GO2](#) ...

Jan 4, 2025 · [JBL GO](#) [JBL GO2](#) [ESSENTIAL](#) ([PDF](#)) ...

[Container Protect Essential?](#) - [PDF](#)

Container Protect Essential? Container Protect Essential [PDF](#) [1](#)

[PC](#) [PDF](#) [- PDF](#)

[Xodo](#) [XChange](#) [Sumatra](#) #1 [Foxit](#) [PDF](#) [Foxit PDF](#) ...

[ing](#) [be essential to doing](#) [do](#)

[A good diet is essential for everyone.](#) [It is essential to do](#) [It is essential](#) ...

[essential](#) [- PDF](#)

[essential](#) [essential](#) [fog](#) [f essential](#) ...

[web of science](#) [ESI](#) [- PDF](#)

[ESI](#) [11](#) [ESI](#) [Essential Science Indicators](#) [ESI](#) [Web of Science](#) ...

important, essential, vital [- PDF](#)

[important](#) [significant](#) [important](#) [essential](#) [necessary](#) [crucial](#) [essential](#) ...

It's essential/vital/... that [- PDF](#)

Mar 17, 2020 · *It's essential/vital/... that* ...

[Back to Home](#)