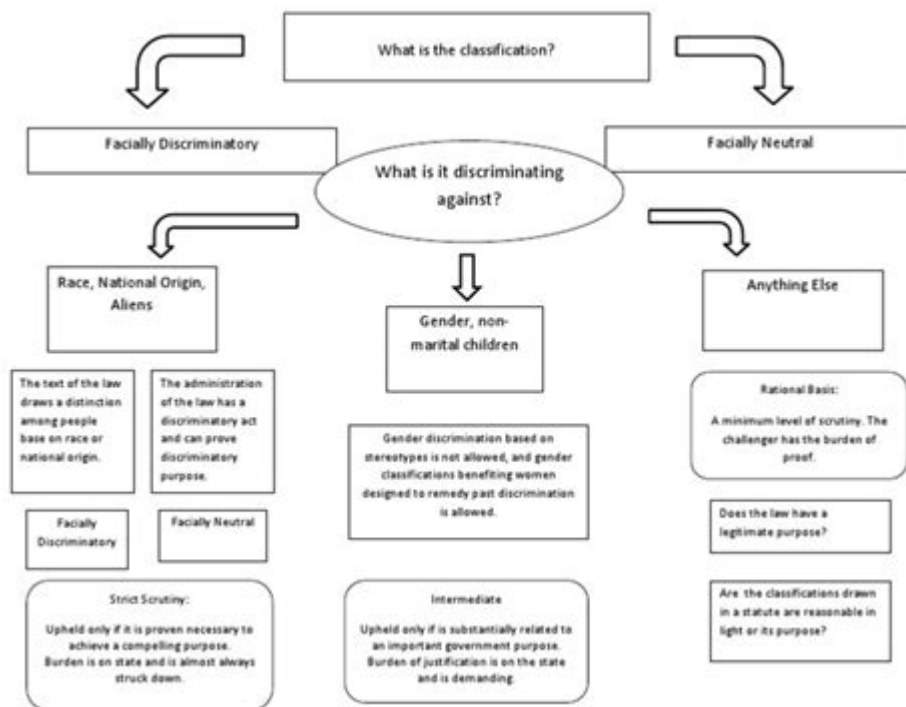


# Equal Protection Analysis Flowchart



**Equal protection analysis flowchart** serves as a crucial tool in understanding how the legal system addresses issues of discrimination and the protection of individual rights under the 14th Amendment of the United States Constitution. This analysis is essential for lawyers, judges, and scholars, as it provides a structured approach to evaluating cases that involve potential violations of equal protection principles. In this article, we will delve into the concept of equal protection, outline the flowchart, and discuss its implications in various legal contexts.

## Understanding Equal Protection

The Equal Protection Clause is part of the 14th Amendment, ratified in 1868, which states: "No state shall... deny to any person within its jurisdiction the equal protection of the laws." This clause ensures that individuals in similar situations are treated equally by the law, prohibiting discrimination based on race, gender, religion, and other characteristics.

The fundamental purpose of the Equal Protection Clause is to prevent arbitrary discrimination and to promote fairness in legal proceedings. Over the years, the courts have developed various levels of scrutiny that guide how to analyze cases involving equal protection claims. These levels dictate the degree of justification required for the government to treat individuals or groups differently.

# Levels of Scrutiny

In order to effectively utilize an equal protection analysis flowchart, it is essential to understand the three primary levels of scrutiny that the courts apply:

## 1. Strict Scrutiny

- This is the highest level of scrutiny applied to cases involving suspect classifications, such as race or national origin.
- The government must show that the challenged law serves a compelling governmental interest and that the law is narrowly tailored to achieve that interest.

## 2. Intermediate Scrutiny

- This level applies to cases involving quasi-suspect classifications, such as gender or legitimacy.
- The government must demonstrate that the law serves an important governmental interest and that the means employed are substantially related to that interest.

## 3. Rational Basis Review

- This is the lowest level of scrutiny and applies to non-suspect classifications, such as age or economic status.
- The government only needs to show that the law is rationally related to a legitimate governmental interest.

# The Equal Protection Analysis Flowchart

The equal protection analysis flowchart provides a systematic way to evaluate whether a law or government action violates equal protection principles. Below is a simplified version of the flowchart:

### 1. Identify the Classification:

- Determine if the law classifies individuals based on a protected characteristic (e.g., race, gender).
- If no classification exists, apply rational basis review.

### 2. Determine the Level of Scrutiny:

- If the classification is suspect (race, national origin), apply strict scrutiny.

- If the classification is quasi-suspect (gender), apply intermediate scrutiny.
- If the classification is non-suspect (age, economic status), apply rational basis review.

### **3. Evaluate the Government's Interest:**

- Identify the government's interest in enacting the law.
- Assess whether the interest is compelling (for strict scrutiny), important (for intermediate scrutiny), or legitimate (for rational basis review).

### **4. Assess the Fit Between the Law and the Government's Interest:**

- For strict scrutiny, determine if the law is narrowly tailored to achieve the compelling interest.
- For intermediate scrutiny, evaluate if the law is substantially related to the important interest.
- For rational basis review, consider if there is a reasonable connection between the law and the legitimate interest.

### **5. Conclusion:**

- If the law fails to meet the required standard of scrutiny, it is likely unconstitutional.
- If the law meets the standard, it is likely to be upheld.

## **Application of the Flowchart in Case Law**

The equal protection analysis flowchart is not just a theoretical exercise; it has real-world implications in various landmark Supreme Court cases. Below are a few notable examples:

### **1. Brown v. Board of Education (1954)**

In this case, the Supreme Court applied strict scrutiny to laws enforcing racial segregation

in public schools. The Court found that the "separate but equal" doctrine was inherently unequal, and thus, violated the Equal Protection Clause. This landmark decision set a precedent for strict scrutiny in cases involving racial discrimination.

## **2. United States v. Virginia (1996)**

Here, the Court evaluated the Virginia Military Institute's male-only admission policy under intermediate scrutiny. The Court held that the policy did not serve an important governmental interest, and therefore, violated the Equal Protection Clause. This case emphasized the necessity for gender-based classifications to demonstrate substantial justification.

## **3. City of Cleburne v. Cleburne Living Center (1985)**

In this case, the Supreme Court utilized rational basis review to evaluate a zoning ordinance that discriminated against individuals with intellectual disabilities. The Court ruled that the ordinance was not rationally related to a legitimate governmental interest, thereby violating the Equal Protection Clause.

# **Importance of the Equal Protection Analysis Flowchart**

The equal protection analysis flowchart is significant for several reasons:

## **1. Clarity and Structure**

- The flowchart provides a clear and structured approach to analyzing equal protection claims, making it easier for legal practitioners to navigate complex legal terrain.

## **2. Promoting Fairness**

- By ensuring that classifications are scrutinized appropriately, the flowchart helps promote fairness and justice in the application of the law.

## **3. Guiding Judicial Decision-Making**

- The flowchart serves as a guide for judges when making decisions involving equal protection issues, ensuring that their rulings align with constitutional principles.

## **4. Educational Tool**

- For law students and those interested in civil rights, the flowchart is an invaluable educational tool that enhances understanding of the legal framework governing equal

protection.

## Conclusion

The **equal protection analysis flowchart** is an essential framework for evaluating claims of discrimination and ensuring that individuals are treated fairly under the law. By understanding the levels of scrutiny and the steps involved in the analysis, legal professionals can effectively argue their cases and uphold the values enshrined in the 14th Amendment. As society continues to evolve, the principles of equal protection remain vital to the pursuit of justice and equality for all individuals.

## Frequently Asked Questions

### What is an equal protection analysis flowchart?

An equal protection analysis flowchart is a visual representation that outlines the steps to determine if a law or government action violates the Equal Protection Clause of the Fourteenth Amendment.

### Why is the equal protection analysis flowchart important?

It provides a systematic approach to evaluate cases involving discrimination, helping legal practitioners and students understand the criteria for assessing equal protection claims.

### What are the key steps in an equal protection analysis flowchart?

The key steps typically include identifying the classification, determining the level of scrutiny, analyzing the government interest, and assessing whether the law meets the required standard.

### What are the levels of scrutiny in equal protection analysis?

The levels of scrutiny are strict scrutiny, intermediate scrutiny, and rational basis review, each applied depending on the type of classification involved, such as race, gender, or economic status.

### When is strict scrutiny applied in equal protection cases?

Strict scrutiny is applied when a law discriminates based on a suspect classification, such as race or national origin, requiring the government to show a compelling interest and that the law is narrowly tailored.

## **What is the difference between intermediate scrutiny and rational basis review?**

Intermediate scrutiny is used for classifications based on gender or legitimacy, requiring the government to show an important interest, whereas rational basis review applies to other classifications and only requires a legitimate interest.

## **Can the equal protection analysis flowchart be used in non-legal contexts?**

Yes, the flowchart can also be useful in policy-making and social justice discussions to evaluate fairness and equality in various contexts, not just in legal cases.

## **What role does case law play in equal protection analysis?**

Case law provides precedents and interpretations that guide how the equal protection analysis flowchart is applied, shaping the understanding of classifications and scrutiny levels.

## **How can the equal protection analysis flowchart help in educational settings?**

It serves as an educational tool for law students and educators to simplify complex legal concepts regarding discrimination and equal protection, enhancing comprehension and retention.

## **What are common misconceptions about equal protection analysis?**

Common misconceptions include the belief that all discrimination is unconstitutional, when in fact, some classifications are subject to lower scrutiny and may be permissible under certain circumstances.

Find other PDF article:

<https://soc.up.edu.ph/49-flash/pdf?docid=XIb47-2072&title=purple-hibiscus-by-chimamanda-ngozi-a-dichie.pdf>

## **Equal Protection Analysis Flowchart**

### **¿Cómo se dice correctamente: “cerca de mí” o “cerca mío”?**

La duda entre usar “cerca de mí” o “cerca mío” es común tanto entre hablantes nativos como entre

...

## **cerca | Diccionario panhispánico de dudas | RA...**

Por su condición de adverbio, no se considera correcto su uso con posesivos: ❌cerca mío, ❌cerca ...

## **Cerca mío, cerca de mí - WordReference Forums**

May 2, 2011 · Cuando decimos "cerca de mí", la preposición "de" no indica posesión (el "cerca" no es mío). Se ...

## *Farmacias de guardia y 24 horas Madrid (abiertas HOY)*

Farmacias de guardia para HOY y farmacias con servicio 24 horas x 365 días en Madrid ciudad y provincia. ...

## **¿Cerca de ti o cerca tuyo? - Castellano Actual Castellano A...**

La forma correcta es cerca de ti. La forma tuyo solo indica 'posesión o pertenencia': Ese libro es tuyo; Todo ...

## **Best last minute holidays and holiday deals for spontaneous ...**

Discover the best last minute holidays and explore top destinations with our best holiday packages. Book today and start planning your perfect trip! ATOL protected.

## **Deals of the Day: Holidays, Flights & Hotels | lastminute.com**

Check our last minute Deals with the official lastminute.com website. We offer amazing late travel deals. Huge savings on Hotels, Flights, Holidays, City Breaks, Cars, Theatre Tickets & Spa. ...

## **The best Last Second Holidays & Late Deals 2025 / 26**

Don't settle for less than sunshine and clear skies on your last second holidays. Experience the thrill of a last minute break and the excitement of a spontaneous last minute holiday, where ...

## Book Cheap Holidays, Flights, Hotels & City Breaks | lastminute.com

Plan your next holidays with the official lastminute.com website. We offer amazing late travel deals. Huge savings on Hotels, Flights, Holidays, City Breaks, Spa & more. Book online now & ...

## **Last Minute All Inclusive Holiday Deals 2025 / 2026 | lastminute.com**

Discover the best last minute all inclusive holidays with stress-free packages including flights, hotels, meals, and more. Perfect for families, couples, and group getaways. ATOL protected.

## **Special Offers Holidays | lastminute.com**

Huge savings on stress-free holiday offers to a great range of destinations. Book luxury and cheap all inclusive holidays now and save at lastminute.com

## Cheap Flights and Hotel Packages 2025 | lastminute.com

Flight + Hotel packages Last Minute holiday deals Enjoy more savings and more perks with our exclusive time limited offers.

## Europe Holidays 2025 | Cheap Holidays in Europe | lastminute.com

Book your holiday in Europe with lastminute.com. Choose from the best holiday destinations in Europe, including Spain, France, Greece, Italy and Turkey.

## Best Cheap Holidays for 2025: Explore Budget-Friendly ...

Cheap Holidays: Discover top destinations at budget-friendly prices. Unearth the best deals and save on your next adventure with lastminute.com. ATOL protected.

## **Compare Cheap Hotels and Best Deals | lastminute.com**

Cheap hotels from the original last minute provider - lastminute.com. Up to 40% off Top Secret Hotels plus exclusive late deals at home and worldwide.

Unlock a clear understanding of legal principles with our equal protection analysis flowchart. Learn more about its application in your cases today!

[Back to Home](#)