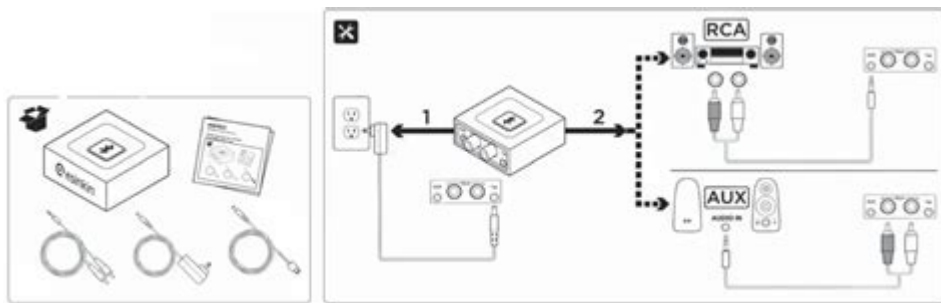


Esinkin Bt Adapter Manual



Esinkin BT Adapter Manual

The Esinkin BT Adapter is a versatile device that allows you to convert your non-Bluetooth audio systems into Bluetooth-enabled devices. This means you can stream music wirelessly from your smartphone, tablet, or computer to your speakers or home audio system. Understanding how to effectively use and troubleshoot the Esinkin BT Adapter can greatly enhance your listening experience. In this comprehensive guide, we will delve into everything you need to know about the Esinkin BT Adapter, including its setup, features, and troubleshooting tips.

Understanding the Esinkin BT Adapter

The Esinkin BT Adapter is designed to receive audio signals via Bluetooth and transmit them to your wired audio devices. This makes it a great addition to older audio equipment that lacks Bluetooth functionality. Below are some key features of the Esinkin BT Adapter:

Key Features

- **Bluetooth 4.0 Technology:** This ensures a stable connection and improved sound quality.
- **Wide Compatibility:** Works with a variety of devices, including smartphones, tablets, and laptops.
- **Easy Setup:** No complicated installation process; simply plug in and connect.

- Compact Design: Portable and lightweight, making it easy to move and store.
- Multi-Point Connection: Allows you to connect two devices simultaneously.

Unboxing the Esinkin BT Adapter

When you purchase the Esinkin BT Adapter, you should find the following items in the box:

1. Esinkin BT Adapter unit
2. USB power cable
3. 3.5mm audio cable
4. User manual
5. Warranty card

Make sure to check that all these items are included before proceeding with the setup.

Setting Up the Esinkin BT Adapter

Setting up the Esinkin BT Adapter is a straightforward process. Here's a step-by-step guide to get you started:

Step 1: Connect the Adapter to Your Audio System

- Locate the audio input on your device (e.g., speakers, sound system).
- Use the included 3.5mm audio cable to connect the Esinkin BT Adapter to the audio input.
- Plug the USB power cable into the adapter and connect it to a power source (e.g., USB wall adapter or computer).

Step 2: Power On the Adapter

Once connected, the adapter should power on automatically. You will see a blue LED light indicating that the device is ready for pairing.

Step 3: Pairing with Your Bluetooth Device

To pair your Bluetooth device (smartphone, tablet, or computer) with the Esinkin BT Adapter, follow these steps:

1. On your Bluetooth device, go to the settings menu and enable Bluetooth.
2. Look for available devices; you should see “Esinkin” listed.
3. Select “Esinkin” to initiate the pairing process.
4. If prompted, confirm the pairing by entering the default PIN (usually “0000” or “1234”).
5. Once paired, the LED light on the adapter will change to a steady blue.

Using the Esinkin BT Adapter

After successfully setting up your Esinkin BT Adapter, you can start streaming music and audio. Here are some tips on how to maximize your experience:

Streaming Music

- Open your preferred music app (Spotify, Apple Music, etc.) on your Bluetooth device.
- Select a song or playlist and hit play.
- The audio should now stream wirelessly to your connected audio system.

Multi-Point Connectivity

If you want to connect multiple devices, the Esinkin BT Adapter supports multi-point connectivity. This means you can switch between two different Bluetooth devices without needing to re-pair each time.

To do this:

1. Pair the first device as previously described.
2. Once connected, turn off Bluetooth on the first device.
3. Pair the second device.
4. After pairing, you can turn Bluetooth back on for the first device; the adapter will switch between them as needed.

Common Troubleshooting Tips

While the Esinkin BT Adapter is generally reliable, you may encounter some issues. Here are some common problems and their solutions:

Issue 1: Adapter Not Pairing

- Solution: Ensure that the adapter is in pairing mode (blue LED blinking). If it's not, reset the adapter by disconnecting it from power for a few seconds.

Issue 2: Audio Quality Issues

- Solution: Check the Bluetooth range; walls and other obstacles can interfere with the signal. Ensure your devices are within 10 meters (33 feet) of each other.

Issue 3: Connection Drops Frequently

- Solution: Make sure your Bluetooth device is updated to the latest firmware. Also, try restarting both the adapter and the Bluetooth device.

Care and Maintenance

To ensure the longevity of your Esinkin BT Adapter, consider the following care tips:

- Keep it Clean: Wipe the surface with a soft, dry cloth to remove dust and dirt.
- Avoid Moisture: Keep the adapter away from water and humidity to prevent damage.
- Store Properly: When not in use, store the adapter in a cool, dry place.

Conclusion

The Esinkin BT Adapter is an excellent tool for breathing new life into your non-Bluetooth audio systems. With its simple setup, reliable performance, and multi-point connectivity, it offers a seamless way to enjoy your favorite music wirelessly. By following the guidelines in this manual, you can maximize your experience and troubleshoot any issues that may arise. Whether you are an audiophile or just looking for a convenient way to enjoy your tunes, the Esinkin BT Adapter is a valuable addition to your audio setup.

Frequently Asked Questions

What is the primary function of the Esinkin BT Adapter?

The Esinkin BT Adapter is designed to enable Bluetooth connectivity for non-Bluetooth devices, allowing them to connect to Bluetooth audio sources like smartphones and tablets.

How do I set up the Esinkin BT Adapter for the first time?

To set up the Esinkin BT Adapter, plug it into a power source, connect it to your audio device via the included cable, and then pair it with your Bluetooth source by following the pairing instructions in the manual.

What should I do if my Esinkin BT Adapter is not pairing?

If your Esinkin BT Adapter is not pairing, ensure that it is in pairing mode, check that your Bluetooth device is discoverable, and make sure both devices are within range.

Can I connect multiple devices to the Esinkin BT Adapter?

The Esinkin BT Adapter typically supports one connection at a time, meaning you cannot connect multiple Bluetooth devices simultaneously.

Is there a specific way to reset the Esinkin BT Adapter?

To reset the Esinkin BT Adapter, unplug it from the power source, wait for about 10 seconds, and then plug it back in. Refer to the manual for detailed reset instructions.

What audio quality can I expect from the Esinkin BT Adapter?

The Esinkin BT Adapter supports high-quality audio streaming via Bluetooth, providing a good sound experience, although the quality may depend on the source device and audio format.

Does the Esinkin BT Adapter require drivers to work?

No, the Esinkin BT Adapter is a plug-and-play device and does not require any additional drivers to function with most operating systems.

What power source does the Esinkin BT Adapter use?

The Esinkin BT Adapter is powered via a standard USB power supply, which is typically included in the package.

Can I use the Esinkin BT Adapter with my TV?

Yes, you can connect the Esinkin BT Adapter to your TV using the appropriate audio output, allowing you to stream audio from your TV to Bluetooth speakers or headphones.

Where can I find the user manual for the Esinkin BT Adapter?

The user manual for the Esinkin BT Adapter can usually be found in the product packaging or downloaded from the manufacturer's official website.

Find other PDF article:

<https://soc.up.edu.ph/17-scan/pdf?ID=sch82-5760&title=diabetes-eye-exam-icd-10.pdf>

[Esinkin Bt Adapter Manual](#)

[Get started with Google Maps - Android - Google Maps Help](#)

Get started with Google Maps This article will help you set up, learn the basics and explain various features of Google Maps. You can use the Google Maps app on your mobile device or ...

Get directions & show routes in Google Maps

You can get directions for driving, public transit, walking, ride sharing, cycling, flight, or motorcycle on Google Maps. If there are multiple routes, the best route to your destination is blue. All other ...

Hjælp til Maps - Google Help

Den officielle Maps Hjælp, hvor du kan finde tip og vejledning i, hvordan du bruger produktet, og andre svar på ofte stillede spørgsmål.

[Google Maps Help](#)

Official Google Maps Help Center where you can find tips and tutorials on using Google Maps and other answers to frequently asked questions.

Buscar por latitud y longitud en Google Maps

En tu ordenador, abre Google Maps. En el mapa, haz clic con el botón derecho en el sitio o en el área. Aparecerá una ventana emergente. En la parte superior, puedes ver la latitud y la ...

Enregistrer et gérer vos trajets dans Google Maps

Par défaut, Google Maps vous suggère plusieurs adresses à enregistrer. Ces adresses proviennent de Vos trajets ou de l'historique de vos recherches. En savoir plus sur les ...

Aide Google Maps

Centre d'aide officiel de Google Maps où vous trouverez des informations sur la navigation dans nos cartes en ligne avec votre navigateur ou votre appareil mobile. Vous pourrez trouver des ...

Buscar ubicaciones en Google Maps

Buscar ubicaciones en Google Maps Puedes buscar sitios y ubicaciones en Google Maps. Si inicias sesión en Google Maps, obtendrás resultados de búsqueda más detallados. Puedes ...

Erste Schritte mit Google Maps

Erste Schritte mit Google Maps In diesem Artikel werden die Einrichtung, die Grundlagen und die verschiedenen Funktionen von Google Maps beschrieben. Sie können die Google Maps App ...

Pesquisa localizações no Google Maps

Pesquisa localizações no Google Maps Pode pesquisar locais e localizações com o Google Maps. Quando inicia sessão no Google Maps, pode obter resultados da pesquisa mais ...

Lisle, IL Weather Advisories - Warnings & Watches | AccuWeather

See a list of all of the Official Weather Advisories, Warnings, and Severe Weather Alerts for Lisle, IL.

Lisle Township, IL Hourly Weather | AccuWeather

Hourly weather forecast in Lisle Township, IL. Check current conditions in Lisle Township, IL with radar, hourly, and more.

Lisle, IL Monthly Weather | AccuWeather

Get the monthly weather forecast for Lisle, IL, including daily high/low, historical averages, to help you plan ahead.

Lisle, IL Monthly Weather | AccuWeather

Get the monthly weather forecast for Lisle, IL, including daily high/low, historical averages, to help you plan ahead.

Lisle, IL Air Quality Index | AccuWeather

Localized Air Quality Index and forecast for Lisle, IL. Track air pollution now to help plan your day and make healthier lifestyle decisions.

Lisle, IL Monthly Weather | AccuWeather

Get the monthly weather forecast for Lisle, IL, including daily high/low, historical averages, to help you plan ahead.

Lisle, IL Monthly Weather | AccuWeather

Get the monthly weather forecast for Lisle, IL, including daily high/low, historical averages, to help you plan ahead.

Lisle, IL Morning Weather | AccuWeather

Lisle, IL's morning weather forecast for today and the next 15 days. Includes the high, RealFeel, precipitation, sunrise & sunset times, as well as historical weather for that particular date.

[Lisle, IL Winter Weather Forecast | AccuWeather](#)

Check out the Lisle, IL WinterCast. Forecasts the expected snowfall amount, snow accumulation, and with snowfall radar.

[Lisle, IL Monthly Weather | AccuWeather](#)

Get the monthly weather forecast for Lisle, IL, including daily high/low, historical averages, to help you plan ahead.

Looking for the Esinkin BT adapter manual? Discover how to set up and troubleshoot your device with our comprehensive guide. Learn more for seamless connectivity!

[Back to Home](#)