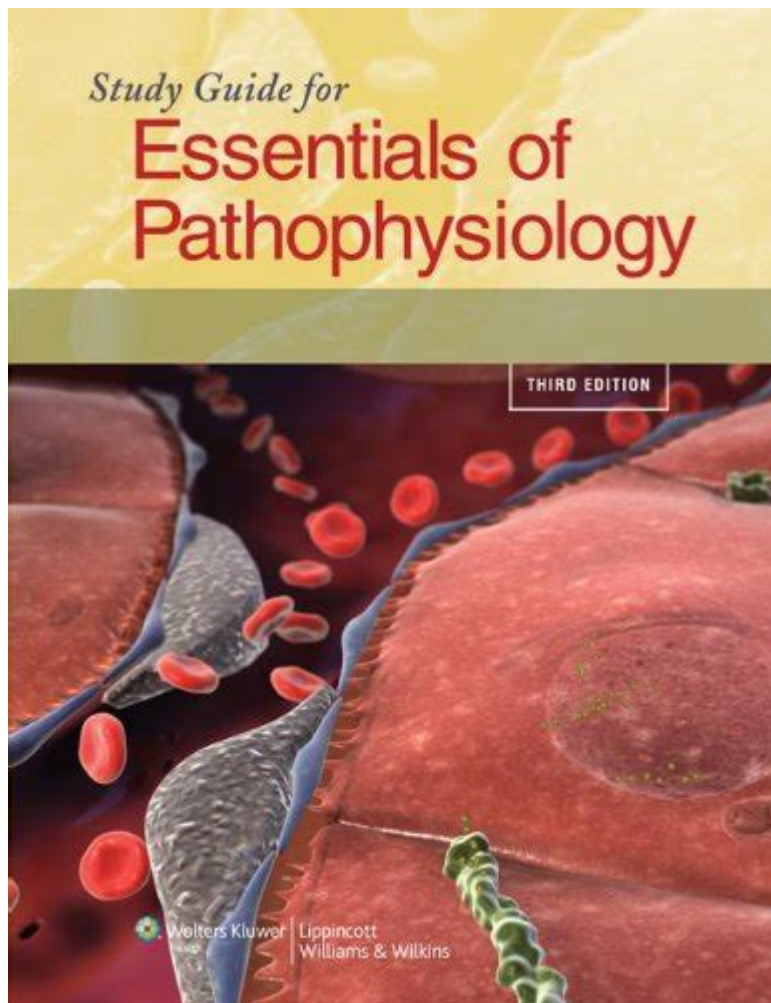


Essentials Of Pathophysiology 3rd Edition Study Guide



Essentials of Pathophysiology 3rd Edition Study Guide serves as an indispensable resource for students and healthcare professionals seeking to deepen their understanding of the mechanisms underlying human disease. This study guide is designed to accompany the main textbook, "Essentials of Pathophysiology," providing a comprehensive overview of key concepts and facilitating an effective learning experience. In this article, we will explore the structure, content, and significance of the study guide, along with study strategies that can enhance comprehension and retention of the material.

Overview of Pathophysiology

Pathophysiology is the study of how disease processes affect the function of the body. It combines knowledge from various disciplines, including biology, physiology, and clinical medicine, to explain the changes that occur in the body as a result of disease. Understanding pathophysiology is crucial for any healthcare professional, as it provides the foundation for diagnosis, treatment, and management of diseases.

Importance of the Study Guide

The "Essentials of Pathophysiology 3rd Edition Study Guide" is tailored to help students synthesize information from the textbook effectively. It offers various learning tools, including:

1. Key Terms and Definitions: Important terms are highlighted, making it easier to grasp essential concepts.
2. Review Questions: These questions encourage active recall and reinforce understanding of the material.
3. Case Studies: Real-life scenarios help students apply theoretical knowledge to practical situations.
4. Summary Tables and Charts: Visual aids simplify complex information and enhance retention.

Content Structure of the Study Guide

The study guide is organized in a manner that reflects the structure of the main textbook. This organization allows students to follow along easily and review specific sections as needed. The guide generally covers the following topics:

1. Cellular Function and Adaptation

Understanding cellular function is paramount in pathophysiology. The study guide discusses:

- Cellular components: Nucleus, cytoplasm, organelles, and their functions.
- Cellular adaptation: Types such as hypertrophy, hyperplasia, atrophy, and metaplasia.
- Cellular injury: Mechanisms of injury including hypoxia, chemical, and mechanical factors.

2. Inflammation and Healing

This section covers the body's response to injury and the healing process:

- Stages of inflammation: Vascular response, cellular response, and the role of mediators.
- Types of healing: Primary and secondary intention, factors affecting healing.

3. Immune Response

The immune system is crucial for defending against disease. Key points include:

- Innate vs. adaptive immunity: Differences and interactions.
- Immune disorders: Autoimmune diseases, hypersensitivity reactions, and immunodeficiencies.

4. Genetic and Congenital Disorders

The guide explains the role of genetics in diseases:

- Mendelian inheritance: Patterns of inheritance and genetic disorders.
- Chromosomal abnormalities: Examples such as Down syndrome and Turner syndrome.

5. Environmental and Lifestyle Factors in Disease

This section addresses how external factors contribute to disease:

- Lifestyle choices: Nutrition, exercise, and their impact on health.
- Environmental exposures: Toxins, pollutants, and their effects on the body.

6. Chronic Diseases and Syndromes

Chronic diseases are a significant focus in healthcare. The study guide includes:

- Common chronic conditions: Diabetes, cardiovascular diseases, and respiratory disorders.
- Pathophysiological mechanisms: How these diseases develop and progress over time.

7. Neoplasia

Understanding cancer is vital for healthcare professionals:

- Characteristics of cancer cells: Uncontrolled growth, metastasis, and angiogenesis.
- Types of tumors: Benign vs. malignant and their clinical implications.

Study Strategies for Pathophysiology

To maximize the effectiveness of the "Essentials of Pathophysiology 3rd Edition Study Guide," consider the following study strategies:

Active Learning Techniques

Engaging with the material actively can enhance retention:

- Flashcards: Create flashcards for key terms and concepts.
- Group discussions: Study with peers to discuss and clarify difficult concepts.

Utilizing Review Questions

The review questions in the study guide are invaluable:

- Self-assessment: Regularly test your knowledge with the review questions.
- Identify weak areas: Focus on topics where you struggle to improve understanding.

Case Studies for Application

Case studies provide a practical aspect to learning:

- Real-world scenarios: Analyze case studies to see how pathophysiological concepts apply in clinical situations.
- Critical thinking: Discuss potential diagnoses and treatments based on the information provided.

Creating Summary Notes

Summarizing information can aid in retention:

- Condense information: Create summary notes for each chapter or section.
- Use visuals: Charts, diagrams, and concept maps can help visualize relationships between concepts.

Conclusion

The "Essentials of Pathophysiology 3rd Edition Study Guide" is an essential tool for students and professionals dedicated to mastering the complexities of human disease. By providing a structured approach to learning and a variety of resources, this study guide enhances understanding of critical concepts in pathophysiology. Employing effective study strategies and actively engaging with the material will not only prepare individuals for exams but also equip them with the knowledge necessary for clinical practice. Mastery of pathophysiology is fundamental to delivering high-quality patient care and advancing one's career in the healthcare field. As students navigate through the study guide, they will develop a solid foundation that will serve them well throughout their professional lives.

Frequently Asked Questions

What are the key learning objectives of the 'Essentials of Pathophysiology 3rd Edition Study Guide'?

The key learning objectives include understanding the mechanisms of disease, recognizing symptomatology, and applying knowledge to clinical scenarios.

How does the 3rd edition of the study guide differ from previous editions?

The 3rd edition includes updated clinical examples, enhanced illustrations, and additional review questions to reflect the latest research and practices in pathophysiology.

What types of review questions can be found in the study guide?

The study guide features multiple-choice questions, case studies, and critical thinking exercises designed to reinforce understanding of pathophysiological concepts.

Are there any online resources or supplements available for the 3rd edition study guide?

Yes, the 3rd edition often comes with access to online resources such as quizzes, flashcards, and interactive learning modules for enhanced study.

Who is the target audience for the 'Essentials of Pathophysiology 3rd Edition Study Guide'?

The target audience includes nursing students, medical students, and healthcare professionals seeking to deepen their understanding of pathophysiology.

What are some common diseases covered in the study guide?

Common diseases covered include diabetes mellitus, cardiovascular diseases, respiratory disorders, and various forms of cancer.

How can students effectively use the study guide for exam preparation?

Students can use the study guide to quiz themselves, work through case studies, and review key concepts regularly to reinforce knowledge prior to exams.

What is the significance of understanding pathophysiology in clinical practice?

Understanding pathophysiology is crucial for diagnosing diseases, developing treatment plans, and providing holistic patient care.

Does the study guide include any case studies or real-world applications?

Yes, the study guide includes case studies that illustrate real-world applications of pathophysiological concepts to enhance critical thinking skills.

<https://soc.up.edu.ph/55-pitch/files?trackid=RNC48-8629&title=spanish-verb-conjugation-practice.pdf>

☐☐☐ FEAR OF GOD ☐☐☐☐ essentials ☐☐☐☐☐ - ☐☐☐☐☐

maya 2020 essentials□□□□□□□□ - □□

Windows Security won't launch in Windows 11 - Microsoft Community

Microsoft Community

What's the difference between Microsoft Defender and Windows ...

□□□□vPro Enterprise□vpro essentials□□□□ - □□

vPro Essentials Intel Intel Core Pentium Celeron i7 i9 ...

fearofgod -

Essentials ESSENTIALS Essentials
1 ...

Microsoft Community

.. Windows, Surface, Bing, Microsoft Edge, Windows Insider, Microsoft Advertising, Microsoft 365 and Office, Microsoft 365 Insider, Outlook and Microsoft Teams forums are available exclusively ...

120 iBT 90 12 Essentials ...

Jan 2, 2022 · 120 iBT® 9012 Essentials iBT® 212422
23 Essentials ...

Câmera do notebook Samsung não está instalada. - Microsoft ...

Olá Marcel=kh seja bem-vindo a comunidade Microsoft! Lamento que sua câmera do notebook Samsung não esteja instalada. Nesta thread me comprometo em resolver esta questão pois será ...

☐☐☐ FEAR OF GOD ☐☐☐☐ essentials ☐☐☐☐☐ - ☐☐☐☐☐

essentials “ ” NIU

maya 2020 essentials -

maya 2020 essentials 1. Autodesk Maya 2020 Essentials ...

Windows Security won't launch in Windows 11 - Microsoft ...

Oct 6, 2023 · Windows, Surface, Bing, Microsoft Edge, Windows Insider, and Microsoft Advertising forums are available exclusively on Microsoft Q&A. This change will help us provide a more streamlined and efficient experience for all your questions and discussions.

[Microsoft Community](#)

Microsoft Community

What's the difference between Microsoft Defender and Windows ...

Feb 28, 2023 · I read that as of late last month, Microsoft 365 Personal includes Microsoft Defender and that it's a separate app. However, Windows comes with Windows Security which used to be called Defender years ago. What is the difference between Microsoft...

vPro Enterprise vpro essentials -

vPro Essentials Intel Core Pentium Celeron i7 i9 ...

fearofgod -

Essentials ESSENTIALS Essentials 1 2 ...

Microsoft Community

.. Windows, Surface, Bing, Microsoft Edge, Windows Insider, Microsoft Advertising, Microsoft 365 and Office, Microsoft 365 Insider, Outlook and Microsoft Teams forums are available exclusively on Microsoft Q&A. This change will help us provide a more streamlined and efficient experience for all your questions.

120iBT9012Essentials ...

Jan 2, 2022 · 120iBT9012Essentials iBT21242223Essentials

Câmera do notebook Samsung não está instalada. - Microsoft ...

Olá Marcl=kh seja bem-vindo a comunidade Microsoft! Lamento que sua câmera do notebook Samsung não esteja instalada. Nesta thread me comprometo em resolver esta questão pois será um prazer ajudar! Preciso que você responda algumas perguntas que me ajudarão no diagnóstico: Aperte as teclas Windows + R. No Executar digite Winver e aperte Enter. Na ...

Master the 'Essentials of Pathophysiology 3rd Edition Study Guide' with our comprehensive review tips and resources. Discover how to excel in your studies today!

[Back to Home](#)