

# Electrolux Luxcare Washer Manual

## Installation Instructions

9

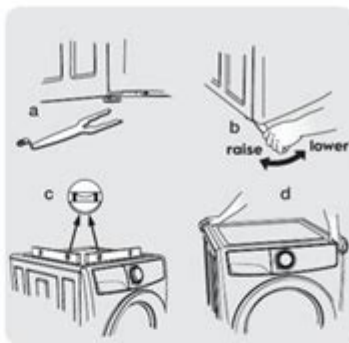
### Leveling your washer

Excessive noise and vibration can be prevented by properly leveling the washer.

1. For free standing installation and with the washer within 4 feet (1 m) of its final location, place a level on top of the washer.
2. Use the universal wrench to adjust the leveling legs so the washer is level front-to-rear and side-to-side, and stable corner-to-corner.
3. Press down on alternate corners and sides and feel for the slightest movement. Adjust the appropriate leg(s) so the washer sits solidly on the floor on ALL four legs. Keep the leveling leg extension at a minimum for best performance of the washer.

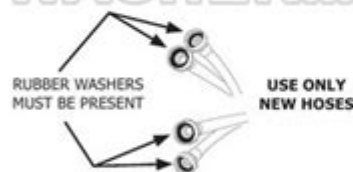
#### NOTE

For pedestal installations, see additional installation instructions included with the pedestal.



### Connecting inlet water

1. Run some water from the hot and cold faucets to flush the water lines and remove particles that might clog the water valve screens and to determine which faucet is hot and which is cold supply.



#### NOTE

Hoses are not included with washer purchase. See "Accessories" section for various inlet hose kits to fit your specific installation.

2. Connect the HOT inlet hose to the HOT inlet connection on the washer and the COLD inlet hose to the COLD inlet connection on the washer. Tighten by hand until snug. Then tighten each supply connection another 2/3 turn with pliers. **Do not cross thread or over-tighten these connections.**
3. Connect the HOT inlet hose to the HOT water supply and the COLD inlet hose to the COLD water supply. Tighten by hand until snug. Then tighten each supply connection another 2/3 turn with pliers. **Do not bend, kink or pinch water inlet hoses.**
4. Turn on the water and check for leaks.



## Electrolux LuxCare Washer Manual

The Electrolux LuxCare Washer is a state-of-the-art laundry appliance designed to provide exceptional cleaning performance while being user-friendly and efficient. This manual aims to guide users through the various features, settings, and maintenance processes associated with the LuxCare Washer.

### Overview of Electrolux LuxCare Washer

Electrolux is renowned for its commitment to quality and innovation in household appliances, and the LuxCare Washer exemplifies this dedication. With advanced technology and user-centric design, this washer offers superior cleaning capabilities, energy efficiency, and a variety of wash cycles to suit different fabric types and soil levels.

## Key Features

- **Smart Boost Technology:** This feature pre-mixes detergent and water before the wash cycle begins, ensuring optimal cleaning performance.
- **Adaptive Dispenser:** The dispenser can handle both liquid and powder detergents, adjusting to provide the best results based on the type used.
- **LuxCare Wash System:** This system ensures that every load is washed thoroughly with precise temperature control and gentle drum movements.
- **Steam Cleaning:** Steam is used to help remove tough stains and allergens, providing a deeper clean.
- **Energy Efficiency:** The washer is designed to use less water and energy while still delivering excellent cleaning results.

## Getting Started with Your Electrolux LuxCare Washer

Before you begin using your LuxCare Washer, it's important to familiarize yourself with the various components and settings.

### Installation

1. **Choose the Right Location:** Ensure that the washer is placed on a stable, level surface. It should be near a power outlet and water supply.
2. **Connect Water Supply:** Attach the water hoses to the back of the washer and ensure they are tightly secured.
3. **Plug in the Washer:** Connect the power cord to a suitable electrical outlet.
4. **Level the Washer:** Adjust the feet of the washer to ensure it is level, which helps reduce noise and vibration during operation.

### Initial Setup

Once the washer is installed, follow these steps for the initial setup:

1. **Load the Washer:** Open the door and load your laundry, ensuring that items are evenly distributed.
2. **Add Detergent:** Use the adaptive dispenser to add the appropriate amount of detergent based on the load size and soil level.
3. **Select a Wash Cycle:** Turn the cycle selector knob to choose the appropriate wash cycle for your laundry type.
4. **Adjust Settings:** Customize settings such as temperature, spin speed, and additional options like steam cleaning if necessary.
5. **Start the Wash:** Press the start button to begin the wash cycle.

## Understanding Wash Cycles and Settings

Electrolux LuxCare Washers come with a variety of wash cycles designed for different types of fabrics and soil levels.

## Common Wash Cycles

- Normal: For everyday fabrics such as cotton and blended materials.
- Delicates: Gentle cycle for delicate fabrics like silk and lace.
- Heavy Duty: For heavily soiled items, such as work clothes or bedding.
- Quick Wash: A shorter cycle for lightly soiled items.
- Sanitize: This cycle uses higher temperatures to kill bacteria and allergens.

## Customizing Wash Settings

Users can customize their wash settings according to their needs:

- Water Temperature: Select from hot, warm, or cold water options.
- Spin Speed: Choose a higher spin speed for faster drying or a lower speed for delicate items.
- Soil Level: Adjust the soil level from light to heavy based on the dirtiness of the load.
- Extra Rinse: Opt for an additional rinse cycle to ensure all detergent is removed from clothing.

## Maintenance and Care

To ensure your Electrolux LuxCare Washer continues to function optimally, regular maintenance is necessary.

### Routine Maintenance Tasks

1. Clean the Filter: Check and clean the washer's filter periodically to prevent clogs.
2. Wipe Down the Drum: After each use, wipe down the inner drum with a clean cloth to remove any detergent residue.
3. Check Hoses: Inspect water hoses for any signs of wear or leaks and replace them if necessary.
4. Run Self-Clean Cycle: Use the self-clean option once a month to keep the washer fresh and odor-free.

## Troubleshooting Common Issues

If you encounter problems with your LuxCare Washer, consider the following troubleshooting tips:

- Washer Won't Start: Ensure it's plugged in, the door is closed, and the settings are properly selected.
- Water Won't Drain: Check for clogs in the filter or drain hose.
- Excessive Noise: Ensure the washer is level and that laundry is evenly distributed within the drum.
- Error Codes: Refer to the user manual for explanations of any error codes displayed.

## Safety Precautions

When using the Electrolux LuxCare Washer, it's important to adhere to safety precautions to ensure safe operation:

- Do Not Overload: Avoid overloading the washer, as this can cause damage and reduce cleaning performance.
- Use Appropriate Detergents: Only use HE (High Efficiency) detergents that are compatible with your washer.
- Keep the Area Dry: Ensure the floor around the washer is dry to prevent slips and falls.

- Disconnect Power When Not in Use: Unplug the washer when performing maintenance or cleaning.

## Frequently Asked Questions

How much detergent should I use?

The amount of detergent varies based on load size and soil level. Follow the manufacturer's recommendations on the detergent packaging.

Can I wash blankets in my LuxCare Washer?

Yes, the Heavy Duty cycle is perfect for washing blankets and larger items, but ensure you do not exceed the washer's capacity.

What should I do if my washer is making a strange noise?

Check to ensure the washer is level and that there are no foreign objects in the drum. If the problem persists, consult a professional technician.

## Conclusion

The Electrolux LuxCare Washer is a versatile and efficient appliance that makes laundry day a breeze. By following the guidelines outlined in this manual, users can ensure they are getting the most out of their washer while maintaining its performance and longevity. Regular maintenance, understanding the features, and adhering to safety precautions will enhance the overall experience of using this impressive washing machine. Whether you are dealing with everyday laundry or special fabrics, the LuxCare Washer is designed to meet your needs and exceed your expectations.

## Frequently Asked Questions

### **What is the Electrolux LuxCare washer manual used for?**

The Electrolux LuxCare washer manual provides essential information on operating the washer, including instructions for washing cycles, maintenance tips, troubleshooting guidelines, and safety precautions.

### **Where can I find the Electrolux LuxCare washer manual?**

The Electrolux LuxCare washer manual can typically be found on the Electrolux official website in the support or manuals section, or it may be included with the washer at the time of purchase.

### **How do I reset my Electrolux LuxCare washer?**

To reset your Electrolux LuxCare washer, unplug it from the power source for about 5 minutes, then plug it back in. This should clear any temporary errors.

### **What are the key features of the Electrolux LuxCare washer?**

Key features of the Electrolux LuxCare washer include advanced wash technology, energy efficiency,

customizable wash cycles, and options for delicate and heavy-duty fabrics.

## **Is there a troubleshooting section in the Electrolux LuxCare washer manual?**

Yes, the Electrolux LuxCare washer manual includes a troubleshooting section that helps diagnose common problems and provides solutions.

## **How do I clean the filter on my Electrolux LuxCare washer?**

To clean the filter on your Electrolux LuxCare washer, locate the filter access panel, remove the filter according to the manual instructions, and rinse it under warm water to remove debris.

## **Can I download the Electrolux LuxCare washer manual online?**

Yes, you can download the Electrolux LuxCare washer manual in PDF format from the Electrolux website, allowing for easy access and reference.

## **What should I do if my Electrolux LuxCare washer won't start?**

If your Electrolux LuxCare washer won't start, check if it is plugged in, ensure the door is properly closed, and refer to the troubleshooting section of the manual for further guidance.

## **Are there recommended detergents for the Electrolux LuxCare washer?**

The Electrolux LuxCare washer manual recommends using high-efficiency (HE) detergents to optimize washing performance and reduce sudsing.

## **How can I contact Electrolux customer support for help with my washer?**

You can contact Electrolux customer support through their official website, where you'll find phone numbers, live chat options, and email support for assistance with your LuxCare washer.

Find other PDF article:

<https://soc.up.edu.ph/41-buzz/files?trackid=mcu85-8601&title=microeconomics-lesson-2-activity-54-answer-key.pdf>

## **[Electrolux Luxcare Washer Manual](#)**

### **Öppna låst lucka på tvättmaskin Electrolux? - Byggahus.se**

Feb 23, 2023 · Någon som har ett bra tips på hur man kan få upp en lucka där låset har fastnat? Jag har följt alla tips på ...

### Ålder på Electrolux kylskåp - Byggahus.se

Nov 18, 2020 · Hur gammalt kan detta kylskåp vara? Jag har aldrig fått kläm på pnc-nummer.

### *Electrolux felkod i44 - slutar inte tömma vatten - Byggahus.se*

May 25, 2023 · Har en dryga tre år gammal Electrolux diskmaskin som börjat vara lynnig. Korta program fungerar alltid, ...

### **"Själavfrostande", nu har jag fått nog... | Byggahus.se**

Aug 19, 2020 · Jag skrev redan tidigare om mina äventyr med min Electrolux EUF2748AOW-frys. Hittills har den ...

### Problem med frys. No Frost fungerar inte - Byggahus.se

Mar 19, 2023 · Jag har en Electrolux EUE2664MFX. Ca 2år gammal. Upptäckte att det blev is i botten av skåpet. Efter ...

### **Öppna låst lucka på tvättmaskin Electrolux? - Byggahus.se**

Feb 23, 2023 · Någon som har ett bra tips på hur man kan få upp en lucka där låset har fastnat? Jag har följt alla tips på Electrolux hemsida och i manualen, nästa steg är att ringa efter en ...

### **Ålder på Electrolux kylskåp - Byggahus.se**

Nov 18, 2020 · Hur gammalt kan detta kylskåp vara? Jag har aldrig fått kläm på pnc-nummer.

### *Electrolux felkod i44 - slutar inte tömma vatten - Byggahus.se*

May 25, 2023 · Har en dryga tre år gammal Electrolux diskmaskin som börjat vara lynnig. Korta program fungerar alltid, men långa brukar stanna med felkod i44. Jag har klurat ut att det ...

### *"Själavfrostande", nu har jag fått nog... | Byggahus.se*

Aug 19, 2020 · Jag skrev redan tidigare om mina äventyr med min Electrolux EUF2748AOW-frys. Hittills har den samlat is i avloppsröret tills fläkten stannat, nu läcker smältvattnet in så jag har ...

### *Problem med frys. No Frost fungerar inte - Byggahus.se*

Mar 19, 2023 · Jag har en Electrolux EUE2664MFX. Ca 2år gammal. Upptäckte att det blev is i botten av skåpet. Efter att ha rivit isär bakstycket så inser jag att hela botten är fylld med is. ...

### *Bosch eller Electrolux tvättmaskin? - Byggahus.se*

Feb 8, 2019 · Hej! Finns liknande trådar men som har några år på nacken. Om ni fick välja, skulle ni ta Bosch eller Electrolux tvättmaskin? Någon som vet var dagens Electrolux tvättmaskiner ...

### *Frys som larmar och blinkar - Byggahus.se*

Oct 18, 2019 · Har köpt ett begagnat Electrolux frysskåp (ca 8 år) och när vi nu kopplar in det så tjuvar det samt blinkar rött. Vi har låtit det stå i 20 timmar på plats innan vi satt på det. Vi har ...

### Diskmaskinen tömmer sig inte på vatten? - Byggahus.se

Oct 6, 2024 · Min diskmaskin vill inte tömma vattnet, Troligen är det något skit som sitter fast då omstart inte funkar. Har modell renlig från IKEA. Hittat liknande trådar men jag behöver att ...

### *Byta sladdvinda i dammsugaren? (Electrolux) - Byggahus.se*

Jan 16, 2011 · Electrolux har en webshop för reservdelar, där finns sprängskisser på apparaten som kanske ger en fingerledning om hur den går att få isär också. Jag vet inte om den har ...

### Vilket vitvarumärke anses ha längst livslängd? - Byggahus.se

May 18, 2020 · Vi ska köpa nya vitvaror dvs kyl, frys, spis och diskmaskin och undrar vad ni har för uppfattning om vilket märke som har längst livslängd utan att massa fel uppstår? Har hört ...

Find the Electrolux LuxCare washer manual to optimize your laundry experience. Discover how to troubleshoot

[Back to Home](#)