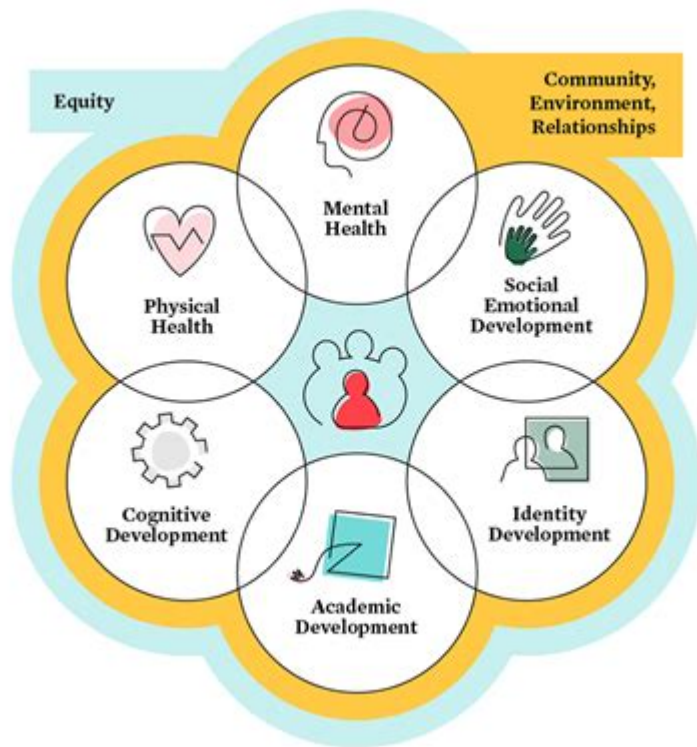


Educating The Whole Child Philosophy



Educating the whole child philosophy is an approach to teaching that emphasizes the comprehensive development of each student, aiming to nurture not only their academic abilities but also their emotional, social, and physical well-being. This philosophy recognizes that children are multifaceted individuals, and education should address their diverse needs, talents, and potential. In an increasingly complex world, the importance of fostering well-rounded individuals who can thrive both in and out of the classroom has become paramount. This article delves into the principles, benefits, and practical applications of the whole child philosophy, as well as challenges in its implementation.

Understanding the Whole Child Philosophy

The whole child philosophy is rooted in the belief that effective education goes beyond mere academics. It promotes a holistic view of education that includes:

1. Academic Development

- Mastery of core subjects such as math, science, language arts, and social studies.
- Development of critical thinking, problem-solving, and analytical skills.
- Encouragement of creativity and innovation through project-based learning and exploration.

2. Social Development

- Fostering interpersonal skills such as communication, teamwork, and empathy.
- Encouraging positive relationships with peers, educators, and the community.
- Promoting conflict resolution and cooperation.

3. Emotional Development

- Cultivating self-awareness, self-regulation, and emotional resilience.
- Providing support for mental health and well-being.
- Teaching coping strategies for stress and adversity.

4. Physical Development

- Encouraging physical fitness and healthy lifestyles.
- Integrating physical activity into daily routines and curricula.
- Addressing nutrition and health education.

5. Civic Responsibility

- Instilling a sense of community and social responsibility.
- Encouraging active participation in civic life and service learning.
- Teaching the importance of sustainability and environmental stewardship.

The Importance of Educating the Whole Child

The whole child philosophy is vital for various reasons, which can be categorized into personal, educational, and societal benefits.

1. Personal Benefits

- **Enhanced Well-Being:** Children who receive holistic education tend to be happier and more fulfilled. Addressing emotional and social needs contributes to overall well-being.
- **Better Learning Outcomes:** When students feel secure and supported, they can concentrate better on their studies, leading to improved academic performance.
- **Resilience Development:** A focus on emotional and social skills equips children with the tools to navigate life's challenges effectively.

2. Educational Benefits

- **Increased Engagement:** A holistic approach encourages active participation in learning, making education more relevant and enjoyable for students.
- **Diverse Skill Development:** Educating the whole child fosters a range of skills, preparing students for a variety of future paths, whether in higher education, vocational training, or the workforce.
- **Positive School Climate:** A focus on social-emotional learning contributes to a positive and inclusive school environment, reducing bullying and

promoting collaboration.

3. Societal Benefits

- **Active Citizenship:** Students educated with a whole child philosophy are more likely to become engaged and responsible citizens, contributing positively to their communities.
- **Reduction in Social Issues:** By addressing the emotional and social needs of children, the whole child approach can help mitigate issues such as violence, drug abuse, and mental health problems in society.
- **Economic Growth:** A well-rounded education system produces individuals who are adaptable, innovative, and prepared to meet the demands of a changing economy.

Implementing the Whole Child Philosophy

To effectively implement the whole child philosophy, schools and educators must adopt certain strategies and practices that support comprehensive education.

1. Curriculum Design

- **Integration of Subjects:** Create interdisciplinary curricula that connect various subjects and make learning more relevant to real-world situations.
- **Incorporate Social-Emotional Learning (SEL):** Embed SEL programs into the school day to teach students about emotional intelligence, empathy, and interpersonal skills.

2. Supportive School Environment

- **Safe and Inclusive Spaces:** Foster a physically and emotionally safe environment that respects diversity and promotes collaboration among students.
- **Access to Resources:** Provide access to counseling, mental health services, and physical health resources for students and their families.

3. Community Involvement

- **Engage Families:** Involve parents and guardians in the educational process through workshops, regular communication, and active participation in school events.
- **Partnerships with Local Organizations:** Collaborate with local community organizations to provide additional resources, support, and learning opportunities for students.

4. Professional Development for Educators

- **Ongoing Training:** Provide professional development opportunities for educators to learn about the whole child philosophy and how to implement it in their teaching practices.
- **Collaboration and Support:** Foster a collaborative environment among

educators to share best practices and strategies for holistic education.

Challenges in Implementing the Whole Child Philosophy

Despite the numerous benefits, implementing the whole child philosophy can be challenging. Some of the key obstacles include:

1. Standardized Testing Pressures

- An overemphasis on standardized testing can lead to a narrow focus on academics, causing educators to disregard the emotional and social aspects of learning.

2. Limited Resources

- Many schools face budget constraints that limit their ability to provide comprehensive support services, extracurricular activities, and small class sizes necessary for effective implementation.

3. Resistance to Change

- Educators and administrators accustomed to traditional teaching methods may resist adopting new practices that align with the whole child philosophy.

4. Training Gaps

- A lack of training and understanding of the whole child approach among educators can hinder its effective implementation.

Conclusion

Educating the whole child philosophy represents a vital shift in how we approach education. By prioritizing the academic, emotional, social, physical, and civic development of students, we can create a more holistic and enriching learning experience. While challenges remain, the benefits of this approach—ranging from improved well-being and engagement to enhanced citizenship and societal contributions—underscore its importance in shaping future generations. As educators, families, and communities work collaboratively to embrace this philosophy, we pave the way for a more compassionate and capable society, prepared to meet the challenges of tomorrow.

Frequently Asked Questions

What is the 'educating the whole child' philosophy?

The 'educating the whole child' philosophy emphasizes a holistic approach to education, focusing not only on academic achievement but also on social, emotional, physical, and ethical development.

What are the key components of the whole child approach?

Key components include fostering a safe and supportive learning environment, promoting engagement and motivation, addressing individual needs, and encouraging social and emotional learning.

How does the whole child philosophy impact student well-being?

By prioritizing the emotional and social aspects of education, the whole child philosophy enhances student well-being, leading to improved mental health, better relationships, and higher academic performance.

What role do teachers play in implementing the whole child philosophy?

Teachers are essential in creating inclusive and nurturing classrooms, recognizing individual student needs, and integrating social-emotional learning into their teaching practices.

How can schools assess the effectiveness of the whole child approach?

Schools can assess effectiveness through a combination of academic performance metrics, student surveys on engagement and well-being, and observations of social interactions and emotional growth.

Find other PDF article:

<https://soc.up.edu.ph/63-zoom/pdf?docid=nmk91-8233&title=two-digit-by-one-digit-multiplication-worksheets.pdf>

Educating The Whole Child Philosophy

Microsoft campus - Wikipedia

The Microsoft campus is the corporate headquarters of Microsoft Corporation, located in Redmond, Washington, United States, a part of the Seattle metropolitan area. Microsoft ...

Microsoft Corporation, 1 Microsoft Way, Redmond, WA 98052, US ...

Get more information for Microsoft Corporation in Redmond, WA. See reviews, map, get the address, and find directions.

Microsoft Office Locations | About Microsoft

Nov 22, 2021 · Learn about Microsoft headquarters in Redmond, WA and our offices, locations, and experience centers across the United States.

Driving directions to Microsoft Headquarters, One Microsoft Way ...

Realtime driving directions to Microsoft Headquarters, One Microsoft Way, Redmond, based on live traffic updates and road conditions – from Waze fellow drivers.

MICROSOFT CORPORATION · ONE MICROSOFT WAY, Redmond, US-WA, 98052-8300, US

The address is ONE MICROSOFT WAY, Redmond, US-WA, 98052-8300, US.

Microsoft Corporate Headquarters - 1 Microsoft Way, Redmond, WA ...

Microsoft Corporate Headquarters at 1 Microsoft Way, Redmond, WA 98052, USA - hours, address, map, directions, phone number, customer ratings and reviews.

Microsoft Headquarters: A Global Tech Hub in Redmond, Washington

The headquarters of Microsoft Corporation is located at One Microsoft Way in Redmond, Washington, USA. This expansive campus has been the global hub for the tech giant since ...

Microsoft Headquarters Information - Headquarters List

Where is the Microsoft Corporate Office? The main campus for the Microsoft headquarters is located in Redmond, Washington. Microsoft Headquarters Address: One Microsoft Way ...

Microsoft Corporate Office & Headquarters | Redmond, WA

Find information on Microsoft headquarters such as corporate phone number, address, website, and consumer reviews.

Microsoft · One Microsoft Way, Redmond, WA 98052, USA

This page provides details on Microsoft, located at One Microsoft Way, Redmond, WA 98052, USA.

MANUAL de PROTOCOLO - Knights of Columbus

No se autoriza ninguna medalla en forma de collar a ningún Pasado diputado de estado, ex diputado de distrito, Pasado Gran Caballero, Pasado Fiel Navegante, Comandante del Cuerpo ...

Medallas - Knights Gear USA

Medalla de Diputado de Distrito \$39.99 USD Cinta de reemplazo de Diputado de Distrito - Roja \$9.75 USD Medalla de mariscal de distrito \$37.75 USD SECRETARIO DE FINANZAS COJ - ...

Joya del Diputado Gran Caballero - Knights of Columbus Supplies

Oficial Designado Supremo Adjunto Gran Caballero Joya. Cinta de cuello completo.

Recursos de Liderazgo

Diputado de Estado, último Pasado Diputado de Estado con Vida, Diputado Territorial, Delegados al Consejo Supremo, Funcionarios del Consejo Supremo, Junta de Directores y Pasado ...

Recursos del gran caballero - Líderes del consejo | Caballeros de ...

Los Caballeros de Colón les dan la bienvenida a los nuevos miembros; nuestras guías paso a paso son instrucciones valiosas y asesoran a los miembros que buscan conseguir la posición ...

Gifts: Council Leaders - Knights Gear USA

Esta sección actualmente no incluye ningún contenido. Agrega contenido a esta sección usando la

barra lateral. Fácil y cómodo de llevar, saluda a tu nueva camiseta favorita.

Products Página 11 - Knights Gear USA

Pantalones cortos de verano perfectos para mantenerte fresco mientras combates el calor del verano.

Layout 1

La medalla de oficio del diputado gran caballero es una brújula suspendida de una cinta púrpura. Una brújula es una guía y compañera constante del navegante y fue una valiosa herramienta ...

ESCRITORIO DEL GRAN CABALLERO - kofc8081es.org

Del Escritorio del Gran Caballero en espanol Message from the Grand Knight Page updated Google Sites Report abuse

Caballeros de Colón Mexico Occidente

Una película inspirada en hechos reales, que cuenta la emocionante historia de José Sánchez del Río, un joven de 13 años que se enlistó en el ejército cristero durante la persecución ...

Discover how the educating the whole child philosophy fosters holistic development in education. Learn more about its benefits and practical applications today!

[Back to Home](#)