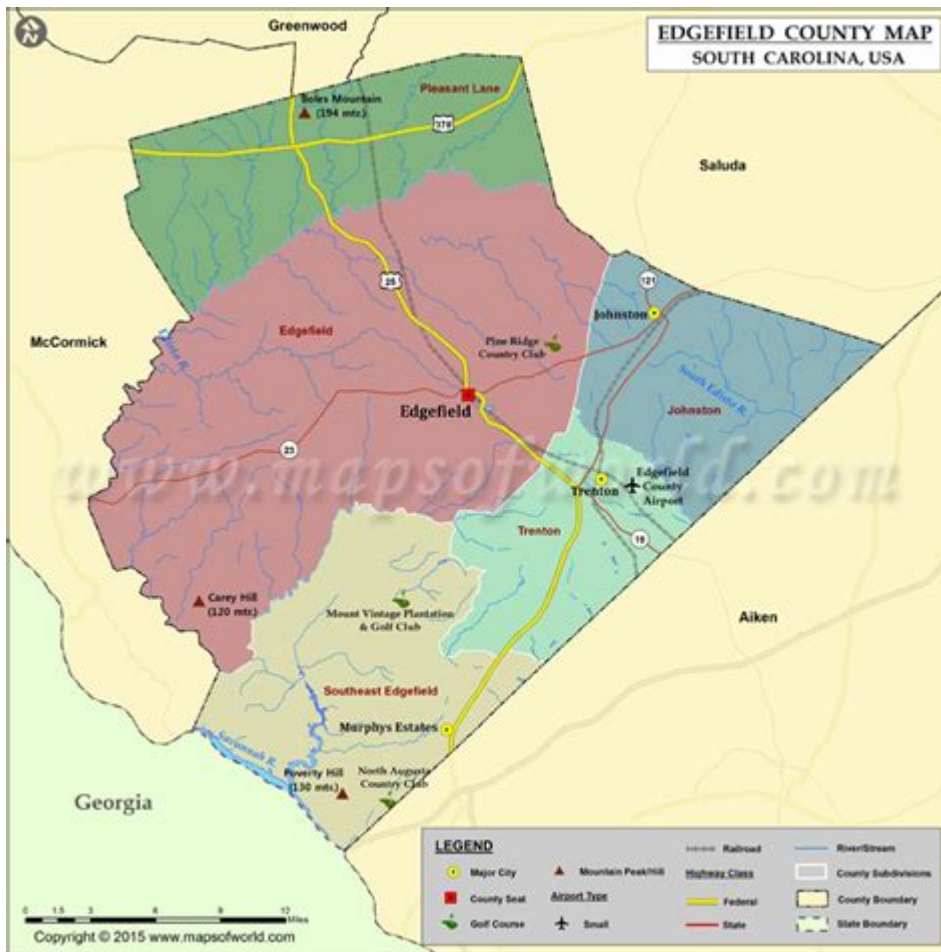


Edgefield County Gis Mapping



Edgefield County GIS Mapping is a crucial tool utilized by residents, businesses, and government entities to access and analyze geographical data efficiently. Geographic Information Systems (GIS) have transformed how we understand spatial relationships, enabling better decision-making and resource management. In Edgefield County, South Carolina, GIS mapping serves various purposes, including land use planning, environmental management, and community services. This article delves into the significance of GIS mapping in Edgefield County, its applications, tools available, and future developments.

Understanding GIS Mapping

GIS mapping involves the use of technology to collect, analyze, and visualize geographic data. It integrates hardware, software, and data to help users understand spatial relationships and patterns. GIS can represent various types of data, including:

- Physical geography: Topography, water bodies, and land cover.
- Demographics: Population density, age distribution, and income levels.
- Infrastructure: Roads, utilities, and public facilities.
- Natural resources: Forests, minerals, and agricultural land.

In Edgefield County, GIS mapping plays a vital role in enhancing community development, planning, and environmental stewardship.

Applications of GIS Mapping in Edgefield County

GIS mapping is instrumental across various sectors in Edgefield County. Some of the primary applications include:

1. Urban and Land Use Planning

GIS provides planners with the tools to visualize and analyze land use patterns. This is crucial for:

- Zoning regulations: Ensuring that land is used appropriately for residential, commercial, or industrial purposes.
- Development proposals: Assessing the impact of new projects on existing infrastructure and the environment.
- Public transportation: Optimizing routes and accessibility for residents.

2. Environmental Management

Edgefield County is rich in natural resources, and GIS mapping helps in monitoring and managing these resources effectively. Key functions include:

- Wildlife habitat mapping: Identifying critical habitats for conservation efforts.
- Water quality assessment: Analyzing data related to rivers and lakes to ensure public health and safety.
- Flood risk management: Mapping flood-prone areas to develop mitigation strategies.

3. Emergency Management

In times of disaster, GIS mapping is invaluable for emergency response teams. It aids in:

- Evacuation planning: Identifying safe routes and shelters for residents.
- Resource allocation: Mapping out areas that require immediate assistance.
- Damage assessment: Analyzing affected zones post-disaster to prioritize recovery efforts.

4. Economic Development

GIS mapping can promote economic growth by:

- Site selection: Helping businesses identify optimal locations based on demographics and

accessibility.

- Market analysis: Analyzing consumer behavior and trends to inform business decisions.
- Infrastructure planning: Supporting investment in essential services such as roads and utilities.

5. Community Services

GIS also plays a role in enhancing community services, including:

- Public health: Mapping health resources and analyzing disease prevalence to improve service delivery.
- Education: Planning school locations based on population density and accessibility.
- Public safety: Analyzing crime data to allocate police resources effectively.

Tools and Resources for GIS Mapping in Edgefield County

Edgefield County utilizes a variety of tools and resources to facilitate GIS mapping. These include:

1. GIS Software

Several software options are available for GIS mapping, including:

- ArcGIS: A comprehensive platform used for mapping and spatial analysis.
- QGIS: An open-source alternative that offers many features for data visualization and analysis.
- Google Earth: A user-friendly tool for visualizing geographic data.

2. Online GIS Portals

Edgefield County has developed online portals where residents and stakeholders can access GIS data. These platforms typically offer:

- Interactive maps: Users can zoom in and out, view layers, and obtain detailed information about specific areas.
- Data downloads: Stakeholders can download datasets for further analysis.
- Public engagement tools: Features that allow residents to provide feedback or report issues.

3. Training and Education

To maximize the benefits of GIS mapping, Edgefield County offers training and resources for both government personnel and the public. Training programs may include:

- Workshops: Covering the basics of GIS technology and its applications.
- Online tutorials: Self-paced learning modules for those interested in developing skills.
- Community seminars: Engaging residents in discussions about how GIS can benefit local initiatives.

Challenges Facing GIS Mapping in Edgefield County

While GIS mapping is highly beneficial, several challenges exist in Edgefield County that may hinder its effectiveness:

1. Data Accuracy and Quality

For GIS mapping to be effective, the data used must be accurate and up-to-date. Challenges include:

- Outdated information: Regular updating is necessary to reflect changes in land use or demographics.
- Data gaps: Incomplete datasets can lead to misleading conclusions.

2. Public Awareness and Engagement

Many residents may not be aware of the benefits of GIS mapping. Challenges include:

- Limited outreach: Efforts to educate the public about GIS resources may need improvement.
- Technological barriers: Some residents may lack access to the necessary technology to utilize GIS tools effectively.

3. Funding and Resources

Sustaining GIS programs often requires considerable financial investment. Challenges include:

- Budget constraints: Limited funding can restrict the capabilities of GIS departments.
- Resource allocation: Prioritizing GIS initiatives among other community needs can be challenging.

The Future of GIS Mapping in Edgefield County

Despite the challenges, the future of GIS mapping in Edgefield County looks promising. Several developments may enhance its effectiveness:

1. Technological Advancements

As technology evolves, so do GIS capabilities. Innovations such as:

- Artificial Intelligence (AI): Enhancing data analysis and predictive modeling.
- Drone technology: Facilitating high-resolution aerial mapping for more accurate data collection.

2. Increased Collaboration

Collaboration among various stakeholders, including government, businesses, and educational institutions, can lead to:

- Shared resources: Pooling data and expertise to improve GIS initiatives.
- Community-driven projects: Engaging residents in mapping efforts to address local needs.

3. Enhanced Public Engagement

Improving public awareness of GIS resources can lead to greater community involvement. Strategies may include:

- Public workshops: Informing residents about available GIS tools and their applications.
- Social media campaigns: Promoting GIS initiatives and encouraging feedback.

Conclusion

In conclusion, Edgefield County GIS mapping serves as a vital resource for enhancing community planning, environmental management, and public safety. By leveraging technological advancements and fostering collaboration among stakeholders, the county can continue to improve its GIS capabilities. These efforts will ultimately lead to better-informed decision-making, more efficient resource management, and a higher quality of life for residents. As GIS technology continues to evolve, Edgefield County is well-positioned to harness its full potential for the benefit of its community.

Frequently Asked Questions

What is Edgefield County GIS mapping?

Edgefield County GIS mapping refers to the geographic information system used to capture, store, analyze, and manage spatial and geographic data specific to Edgefield County.

How can I access Edgefield County GIS maps?

You can access Edgefield County GIS maps through the official Edgefield County government website, where they provide online mapping tools and resources.

What types of data can be found in Edgefield County GIS mapping?

Edgefield County GIS mapping includes data on land use, property boundaries, zoning, flood zones, transportation networks, and public facilities.

Is Edgefield County GIS mapping useful for property research?

Yes, Edgefield County GIS mapping is a valuable tool for property research, providing information on property ownership, assessments, and historical data.

Can I create custom maps using Edgefield County GIS?

Yes, users can create custom maps using Edgefield County GIS tools, allowing for personalized data overlays and analysis.

Are there mobile applications for Edgefield County GIS mapping?

Yes, some mobile applications are available that integrate with Edgefield County GIS mapping, providing access to maps and data on the go.

How frequently is the data in Edgefield County GIS updated?

The data in Edgefield County GIS is typically updated on a regular basis, although the specific frequency may vary depending on the type of data and department managing it.

Who can benefit from using Edgefield County GIS mapping?

Real estate professionals, urban planners, environmental researchers, local government officials, and residents can all benefit from using Edgefield County GIS mapping.

Find other PDF article:

<https://soc.up.edu.ph/06-link/files?trackid=iYM22-0468&title=ancc-exam-blueprint-2022.pdf>

Edgefield County Gis Mapping

Start home page daily quiz : r/MicrosoftRewards - Reddit

Apr 5, 2024 · Confusingly, I appeared to receive 10 points just from clicking the tile and then no points after ...

BingHomepageQuiz - Reddit

Microsoft Bing Homepage daily quiz questions and their answers

[Bing Homepage Quiz not working : r/MicrosoftReward...](#)

Microsoft sucks soooo much arse. I have been complaining for weeks about not getting points from the Bing ...

EveryDayBingQuiz - Reddit

Welcome all of you, here you will get daily answers of Microsoft Rewards (Bing Quiz) like Bing Homepage Quiz, ...

Bing homepage quiz : r/MicrosoftRewards - Reddit

Dec 4, 2021 · While these are the right answers and this quiz is still currently bugged, you don't lose points for ...

Used Inventory - petesrvcenter.com

Manufacturer pictures, specifications, and features may be used in place of actual units on our lot. Please contact us @802-990-0770 for availability as our inventory changes rapidly.

Used Travel Trailers For Sale in New England - Pete's RV

We offer a great selection and great pricing on all our Used Travel Trailers for sale in New England. Stop in today at Pete's RV Center to see all our Travel Trailers for sale.

Pre-Owned RVs for Sale in New England | Pete's RV Center

Pete's RV Center boasts a diverse range of used RVs for sale, catering to the adventurous spirits in New England. Our dealership, located in the heart of the region, offers meticulously ...

Pete's Camping Service, Inc. | Kimball MI - Facebook

We are the largest RV dealer in St. Clair County, MI and we...

Pete's RV Center - Your Next Adventure Awaits: Discover Used ...

Dec 26, 2024 · Pete's RV Center is your one-stop shop for all your RV needs in New England. They offer a diverse selection of new and used RVs, including travel trailers, motorhomes, and ...

Flash Used Clearance Sale | Pete's RV Center - YouTube

Pete's RV Center is having its annual Flash Used Clearance Sale so make your way down to any of our 4 lots to check out all the great used campers we have in stock.

Pre-Owned RVs for Sale in Virginia & Pennsylvania | Pete's RV ...

Explore a premier selection of pre-owned RVs at Pete's RV Center, your go-to dealership in Virginia and Pennsylvania. Find quality used RVs perfect for your next adventure!

Petes RV Center

500 West Lincoln Highway Schererville, IN 46375. JAYCO EXCLUSIVE! Welcome Bargain Hunters! 30+ BRANDS IN STOCK! Follow The Yellow Shirt!

Pete's Camping Service Inc 4631 Lapeer Rd., Kimball, MI, 48074

We sell new and used travel trailers and fifth wheels and also do many repairs on the trailers and parts. We offer Lp gas, RV storage, truck accessories, caps, and many different RV parts in ...

Travel Trailers for Sale in New England | Pete's RV Center

Visit us at Pete's RV Center in New England and start your next adventure with confidence. You can also check out some of our other available models, including our used RVs for sale, our ...

Explore Edgefield County GIS mapping to enhance your understanding of local geography and property details. Discover how to access vital mapping tools today!

[Back to Home](#)