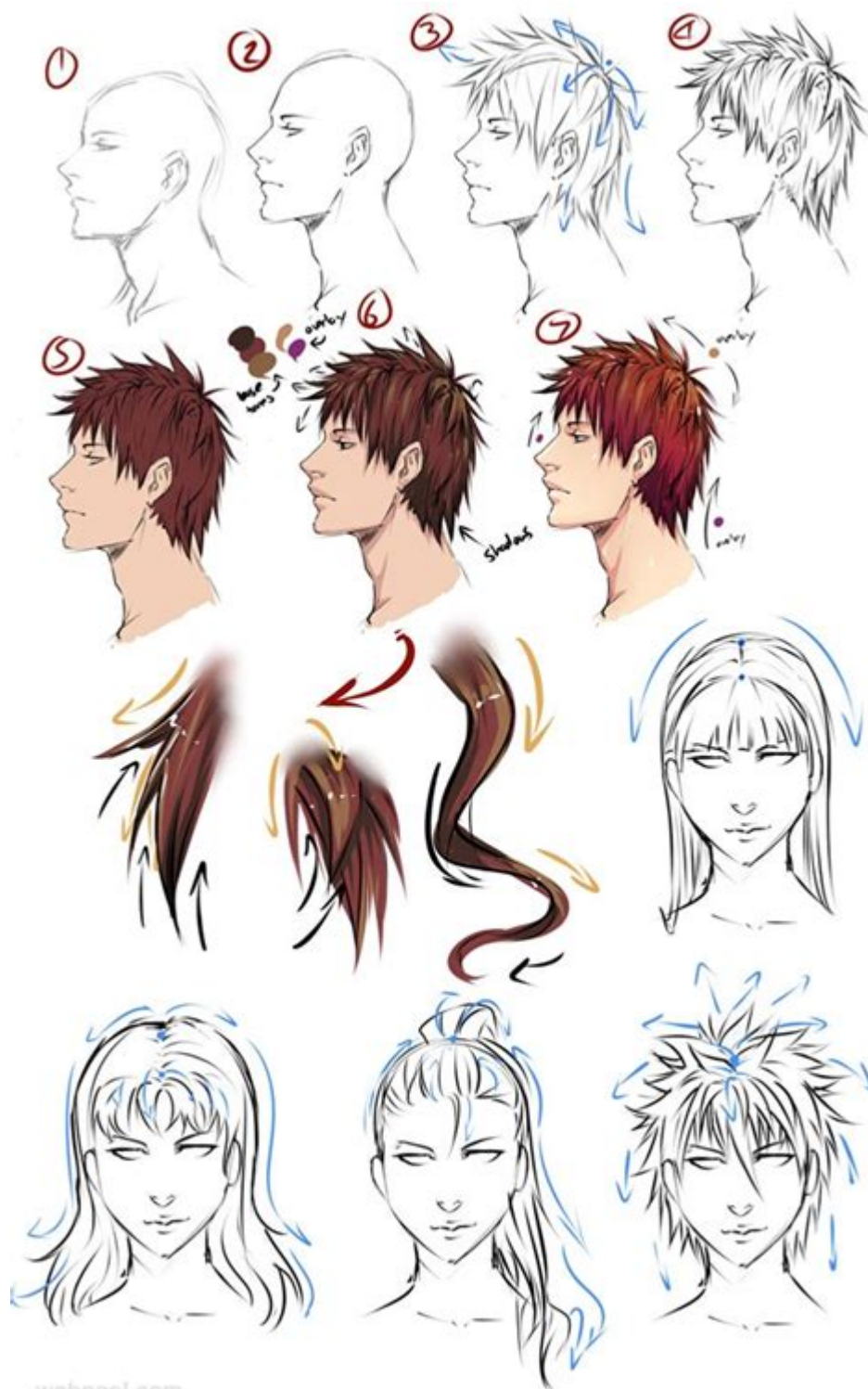


Easy To Draw Anime Character



webneel.com

Easy to draw anime characters have captivated fans and aspiring artists alike, offering an accessible entry point into the world of anime art. For many, creating anime-inspired illustrations can be an enjoyable pastime, a way to express creativity, or even a stepping stone toward a professional career in art. In this article, we will explore various easy-to-draw anime characters, techniques for simplifying features, and tips for beginners to enhance their skills. Whether you're a seasoned artist looking for inspiration or a novice eager to learn, there's something here for everyone.

Understanding the Basics of Anime Style

Before diving into specific characters, it's essential to grasp the foundational elements of anime art. Anime is characterized by its unique visual style, which often includes exaggerated facial features, vibrant colors, and dynamic expressions.

Key Features of Anime Art

1. **Large Eyes:** Anime characters typically have oversized eyes that convey a wide range of emotions. The eyes can be drawn using simple shapes, often resembling ovals or circles.
2. **Simplified Facial Features:** While some anime characters have intricate details, many feature simplified noses and mouths. This allows for easier expression through minimalistic designs.
3. **Distinct Hair Styles:** Hair in anime is often stylized and can be drawn with bold shapes and sharp angles. This makes it easier to create a character with a unique look without getting bogged down by realism.
4. **Dynamic Poses:** Anime art emphasizes action and movement, often using exaggerated poses to convey emotion or action. Learning to draw characters in dynamic poses can make your artwork more engaging.
5. **Stylized Clothing:** Clothing in anime can range from simple to elaborate. However, many easy-to-draw characters wear basic outfits that can be quickly rendered.

Choosing Easy Anime Characters to Draw

When starting your journey into anime art, selecting characters that are easy to draw can help build confidence and skill. Here are some popular characters and styles that are beginner-friendly:

1. Chibi Characters

Chibi characters are stylized versions of anime figures, typically characterized by their small stature and oversized heads. They are often cute and expressive, making them perfect for beginners.

- Examples:
- **Kawaii Animals:** Draw small, adorable animals with big eyes and simple features.
- **Chibi Versions of Popular Characters:** Consider drawing chibi versions of well-known anime characters like Sailor Moon or Naruto. Their simplified forms make them easier to replicate.

2. Iconic Anime Characters

There are several iconic anime characters that have simple designs and are widely recognizable.

- Saitama from One Punch Man: With a bald head and a straightforward costume, Saitama is an excellent choice for beginners.
- Goku from Dragon Ball: Goku's spiky hair and simple outfit make him a fun and approachable character to draw.
- Luffy from One Piece: Luffy's straw hat and simple facial features lend themselves to easy replication.

3. Original Characters (OCs)

Creating your own characters can be a fulfilling experience. Start with basic shapes and designs, and as you become more comfortable, you can add unique traits.

- Tips for Designing OCs:
- Use simple geometric shapes to form the head and body.
- Experiment with hair color and styles.
- Keep clothing designs basic, focusing on a few key elements.

Step-by-Step Guide to Drawing an Easy Anime Character

Let's break down the process of drawing an easy anime character into manageable steps. For this example, we'll create a simple chibi character.

Materials Needed

- Pencil and eraser
- Paper or sketchbook
- Colored pencils or markers (optional)

Step 1: Sketch the Basic Shapes

1. Draw a Circle: Start with a large circle for the head.
2. Add Guidelines: Lightly sketch a vertical line down the center of the circle and a horizontal line across the middle to help position facial features.
3. Draw the Body: Below the head, sketch a small rectangle or oval for the body.

Step 2: Define the Face

1. Eyes: Draw two large ovals on either side of the vertical guideline. Add smaller circles inside for the

pupils.

2. Nose: Place a small dot or line slightly below the horizontal guideline.
3. Mouth: Draw a simple curve beneath the nose for a smiling expression.

Step 3: Add Hair and Ears

1. Hair: Use flowing shapes on top of the head to create a hairstyle. Keep it simple; you can add spikes or curls as desired.
2. Ears: Draw small semicircles on either side of the head, aligned with the eyes.

Step 4: Draw the Arms and Legs

1. Arms: Sketch two small, rounded rectangles extending from the sides of the body. You can position them in various poses (e.g., raised, at the sides).
2. Legs: Draw two short, straight lines or rectangles extending down from the bottom of the body.

Step 5: Refine and Add Details

- Clothing: Add simple clothing details, like a shirt or skirt. Keep shapes basic, using straight lines and curves.
- Facial Expressions: Change the mouth or eyes to convey different emotions, such as happiness or surprise.

Step 6: Inking and Coloring (Optional)

1. Ink: Once you are satisfied with your pencil sketch, go over the lines with a pen or fine marker.
2. Erase: Gently erase the pencil lines after the ink has dried.
3. Color: Use colored pencils or markers to bring your character to life. Choose bright, vibrant colors typical of anime art.

Tips for Improving Your Anime Drawing Skills

As you practice drawing easy anime characters, consider these tips to improve your skills:

1. Practice Regularly: Consistency is key. Set aside time each day or week to draw.
2. Study Existing Artwork: Analyze how professional artists create their characters. Pay attention to proportions, expressions, and poses.
3. Join Online Communities: Engage with other artists on platforms like DeviantArt, Instagram, or dedicated forums. Sharing your work can provide valuable feedback.
4. Use References: Don't hesitate to use reference images to guide your drawing. This can help you understand anatomy and proportions better.

5. Experiment with Styles: Don't be afraid to try different anime styles. This exploration can help you discover your unique artistic voice.

Conclusion

Drawing easy to draw anime characters is an excellent way to start your artistic journey. By focusing on simple designs, practicing regularly, and embracing your creativity, you can quickly improve your skills and develop your style. Whether you're drawing chibi characters, iconic figures, or your own original creations, remember that each stroke is a step toward mastery. So grab your pencil and paper, and enjoy the process of bringing your anime characters to life!

Frequently Asked Questions

What are some easy anime characters to draw for beginners?

Some easy anime characters to draw for beginners include characters like Totoro from 'My Neighbor Totoro', Chibi versions of Naruto, or Pikachu from 'Pokémon'.

What tools do I need to start drawing easy anime characters?

You can start with basic tools like pencils, erasers, sketch paper, and inking pens. Digital drawing on a tablet or software like Procreate can also be great.

Are there any online tutorials for drawing easy anime characters?

Yes, platforms like YouTube and websites like DeviantArt offer numerous tutorials specifically for drawing easy anime characters.

What styles of anime are easiest to draw?

Chibi style and simplistic designs with fewer details are generally easier to draw than more realistic or detailed anime styles.

How can I simplify the process of drawing anime characters?

Start by breaking down the character into basic shapes, use simple lines, and focus on one feature at a time, such as the eyes or hair.

Can I create my own easy anime character design?

Absolutely! You can mix and match features from different characters or create original designs using simple shapes and colors.

What are some common mistakes to avoid when drawing easy anime characters?

Common mistakes include overcomplicating details, neglecting proportions, and not using references. It's important to keep it simple, especially as a beginner.

What are some popular easy anime characters for fan art?

Popular easy anime characters for fan art include characters like Goku from 'Dragon Ball', Sakura from 'Cardcaptor Sakura', and Luffy from 'One Piece'.

Find other PDF article:

<https://soc.up.edu.ph/67-blur/files?ID=kag30-7686&title=wordle-answer-today-forbes.pdf>

Easy To Draw Anime Character

□ □ □ □ □ □ □ □ □ □ □ □ □ □ - □ □ □ □

Jun 21, 2023 · 1 2

-

2011 年 1 月 ...

Easy Connect -

154 Easy Connect Easy Connect ↑ Easy Connect
2022-04-23 23:20 24

□□□□□□□□□□"Internet□□□□□□□□□□ ...

`##### internet ##### 1. ##### " ...`

_____ - _____

```

lenovo f6
acer fn+f7 bios f2 BIOS Advanced ...

```

microsoft edge

Jun 4, 2022 · microsoft edge Microsoft Edge

□□□□ *she* □□□□ - □□□□

she She hangs out every day near by the beach Havin'a harnican fallin'asleep
She looks so sexy when she's walking the sand

rc100 - 0

"Discover how to create easy to draw anime characters with our step-by-step guide. Unleash your creativity and improve your skills today! Learn more."

[Back to Home](#)