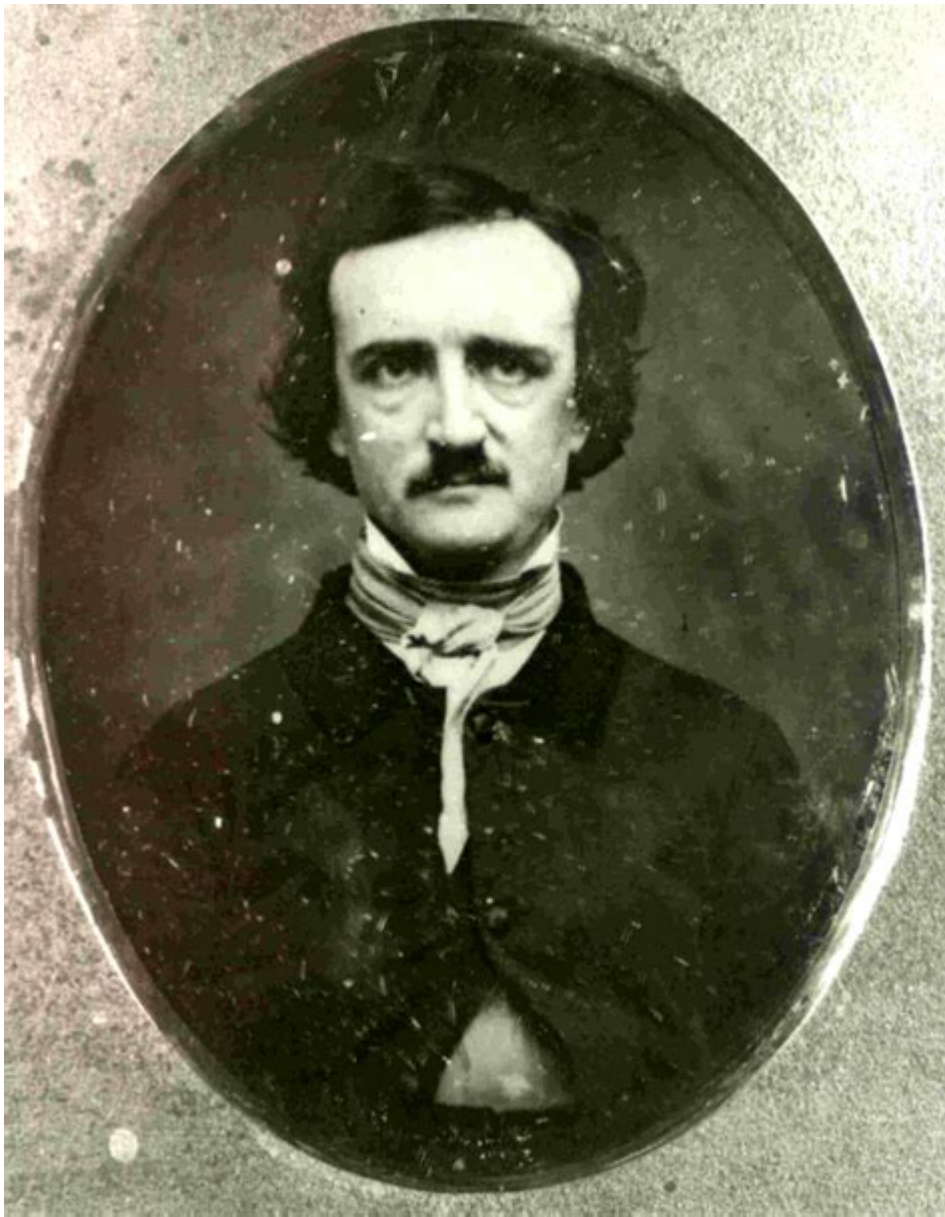


# Edgar Allan Poe To Science



**Edgar Allan Poe to Science** is a fascinating intersection that highlights the unique ways in which literature and science can inform and inspire each other. Edgar Allan Poe, an iconic figure in American literature, is best known for his macabre tales and haunting poetry. However, his contributions extend far beyond the realm of fiction and poetry; they also encompass significant insights into the world of science, particularly in relation to the fields of psychology, forensics, and astronomy. This article will explore how Poe's literary works reflect scientific themes, his contributions to scientific thought, and the lasting impact of his work on both literature and science.

## Edgar Allan Poe: A Brief Biography

Edgar Allan Poe was born on January 19, 1809, in Boston, Massachusetts. Orphaned at a young age, he was raised by John and Frances Allan in Richmond, Virginia. His tumultuous life, marked by

struggles with poverty, addiction, and personal loss, deeply influenced his work. Poe is often credited with pioneering the detective fiction genre, and his narrative style and thematic concerns have left an indelible mark on American literature.

Some key points in Poe's life include:

1. Early Education: Poe attended the University of Virginia but had to leave due to financial difficulties.
2. Literary Career: His first major work, "Tamerlane," was published in 1827, but he gained wider recognition with "The Raven" in 1845.
3. Personal Struggles: Poe battled with alcoholism and faced numerous tragedies, including the death of his wife, Virginia Clemm, in 1847.
4. Death: He died under mysterious circumstances on October 7, 1849, in Baltimore, Maryland.

## Poe's Influence on Science

While Poe is primarily recognized for his contributions to literature, his works often intersect with scientific ideas. He had a keen interest in various scientific disciplines and was ahead of his time in many respects.

## Poe and Psychology

One of the most significant connections between Poe's work and science lies in his exploration of the human mind. His stories frequently delve into themes of madness, obsession, and the psychological complexities of his characters.

- "The Tell-Tale Heart": This short story exemplifies Poe's understanding of psychological horror. It captures the narrator's descent into madness, showcasing themes of guilt and paranoia. The story can be viewed through a psychological lens, exploring the concepts of cognitive dissonance and the unreliable narrator.
- "The Black Cat": This tale offers insight into the darker aspects of the human psyche, examining the effects of alcohol abuse and the resulting moral decay. The protagonist's transformation reflects the struggle between reason and irrationality, a theme central to psychological studies.

Poe's exploration of these themes predates and aligns with later psychological theories, including those proposed by Sigmund Freud, who would later examine the unconscious mind and its influence on behavior.

## Poe and Forensics

Poe is often credited with laying the groundwork for modern detective fiction, particularly through his character C. Auguste Dupin, introduced in "The Murders in the Rue Morgue." Dupin's methodical approach to solving crimes mirrors the scientific method, emphasizing observation, deduction, and reasoning.

- Analytical Techniques: Dupin's methods involve careful observation and logical reasoning, which are essential elements in forensic science. His ability to piece together clues and arrive at conclusions resonates with the investigative techniques used in criminal investigations today.
- Influence on Future Detectives: Poe's character inspired later detective fiction writers, including Arthur Conan Doyle's Sherlock Holmes. Holmes, like Dupin, employs scientific methods in his investigations, further bridging the gap between literature and forensic science.

Poe's contributions to the detective genre not only entertained readers but also influenced the development of investigative techniques that are still relevant in modern forensics.

## **Poe and Astronomy**

Poe's interest in science extended to astronomy, which is evident in several of his works. He often incorporated astronomical themes and ideas into his writing, demonstrating a fascination with the cosmos.

- "Eureka": This prose poem serves as a philosophical exploration of the universe. In it, Poe speculates about the nature of the cosmos, the origin of the universe, and the concept of infinity. His musings on the universe's structure predate some modern astronomical theories, showcasing his visionary thinking.
- Cosmic Horror: Poe's use of cosmic themes in stories like "The Narrative of Arthur Gordon Pym" reflects a growing interest in the unknown and the vastness of space. This sense of cosmic dread has influenced the genre of science fiction and horror, illustrating how literature can engage with scientific concepts.

## **Poe's Legacy in Literature and Science**

Edgar Allan Poe's legacy is profound, extending beyond his literary contributions to influence various scientific fields. His exploration of psychological themes, detective fiction, and cosmic ideas has left a lasting impact.

## **Influence on Modern Literature**

Poe's work has inspired countless writers and has shaped various literary genres, including:

1. Gothic Literature: His dark themes and psychological depth paved the way for future Gothic writers.
2. Science Fiction: Poe's imaginative narratives often blur the lines between reality and the fantastical, influencing early science fiction authors.
3. Detective Fiction: His creation of the detective genre set the foundation for crime and mystery storytelling.

# Impact on Scientific Thought

Poe's writings have also sparked interest in scientific inquiry and exploration:

- Psychology: The psychological complexity of his characters invites readers to consider deeper aspects of the human mind, paving the way for future psychological studies.
- Forensic Science: His innovative narrative techniques have informed modern investigative practices, emphasizing the importance of observation and reasoning.

## Conclusion

Edgar Allan Poe's contributions to literature and science are deeply intertwined, revealing how creative expression can enhance our understanding of complex scientific themes. His exploration of psychological horror, forensics, and astronomy not only entertained audiences but also prompted critical thinking about the human experience and the universe's mysteries. As we continue to navigate the realms of literature and science, Poe's work remains a testament to the enduring power of storytelling and its ability to illuminate the intricacies of the human condition and the cosmos. Through his unique lens, Poe invites us to consider the darker corners of the mind and the vastness of the universe, reminding us that the boundaries between science and art are often more fluid than they appear.

## Frequently Asked Questions

### How did Edgar Allan Poe's work influence the field of forensic science?

Edgar Allan Poe is often credited with laying the groundwork for detective fiction, particularly with his story 'The Murders in the Rue Morgue.' This narrative introduced elements of logical reasoning and forensic analysis that are now fundamental in forensic science.

### What scientific themes are prevalent in Poe's poetry and prose?

Poe often explored themes of madness, the human psyche, and the nature of death, which resonate with psychological and neurological concepts. His interest in the workings of the mind and its darker aspects has been examined through modern psychological lenses.

### Did Edgar Allan Poe have any formal education in science?

While Edgar Allan Poe did not have formal training in science, he was well-read and engaged with contemporary scientific ideas, particularly in areas like physics and psychology, which influenced his writing and thematic explorations.

## In what ways can Poe's 'The Black Cat' be interpreted through a scientific lens?

Poe's 'The Black Cat' delves into themes of alcoholism, guilt, and psychological torment, which can be analyzed through psychological theories and the science of addiction, providing insights into human behavior and mental health.

## How can Poe's exploration of the macabre relate to modern scientific studies of fear?

Poe's vivid depictions of fear and horror can be linked to contemporary studies in psychology and neuroscience that examine the biological and psychological responses to fear, including the fight-or-flight response and the impact of trauma on the brain.

Find other PDF article:

<https://soc.up.edu.ph/41-buzz/pdf?docid=rFH72-3438&title=miniature-pigs-for-sale-melbourne.pdf>

## Edgar Allan Poe To Science

### **SEC.gov | Search Filings**

Search Filings Enjoy free public access to millions of informational documents filed by publicly traded companies and others in the SEC's Electronic Data Gathering, Analysis, and Retrieval ...

#### EDGAR Full Text Search - SEC.gov

The new EDGAR advanced search gives you access to the full text of electronic filings since 2001.

#### Company Search - SEC.gov

Feb 11, 2010 · From this page you can search for company information. Company filings are available starting in 1994. See also full text search.

#### Accessing EDGAR Data - SEC.gov

EDGAR accepts new filer applications, new filings, and changes to filer data each business day, Monday through Friday, from 6:00 a.m. to 10:00 p.m., ET. Indexes incorporating the current ...

#### EDGAR Search Assistance - SEC.gov

Jul 12, 2024 · EDGAR Search Assistance Find EDGAR search resources below: Accessing EDGAR Data Using EDGAR to Research Investments How Do I Use EDGAR How to Search ...

### **SEC.gov | CIK Lookup**

The Central Index Key (CIK) is used on the SEC's computer systems to identify corporations and individual people who have filed disclosure with the SEC. To find a CIK for a company, fund, or ...

### **Complete Annual Confirmation for an EDGAR Account - SEC.gov**

Complete Annual Confirmation for an EDGAR Account Once enrolled in EDGAR Next, each filer is required to confirm annually on the filer's EDGAR Filer Management dashboard that: The ...

## **EDGAR Release 25.2 - SEC.gov**

EDGAR Release 25.2 On June 16, 2025, EDGAR Release 25.2 will introduce the following changes:  
EDGAR Filing Website Updates for Release 25.2 On August 28, 2024, the ...

## Enroll in EDGAR Next - SEC.gov

Mar 24, 2025 · Compliance with EDGAR Next is required to file on EDGAR as of September 15, 2025  
Beginning September 15, 2025, filers that have not enrolled or been granted access after ...

## **SEC.gov | Home**

Founded to help our country respond to the Great Depression, we're the agency that protects investors from misconduct, promotes fairness & efficiency in the securities markets, and ...

## *SEC.gov | Search Filings*

Search Filings Enjoy free public access to millions of informational documents filed by publicly traded companies and others in the SEC's Electronic Data ...

## **EDGAR Full Text Search - SEC.gov**

The new EDGAR advanced search gives you access to the full text of electronic filings since 2001.

## *Company Search - SEC.gov*

Feb 11, 2010 · From this page you can search for company information. Company filings are available ...

## **Accessing EDGAR Data - SEC.gov**

EDGAR accepts new filer applications, new filings, and changes to filer data each business day, Monday through Friday, from 6:00 a.m. to 10:00 p.m., ...

## EDGAR Search Assistance - SEC.gov

Jul 12, 2024 · EDGAR Search Assistance Find EDGAR search resources below: Accessing EDGAR Data Using EDGAR to Research Investments How Do I Use ...

Explore the intriguing connections between Edgar Allan Poe and science. Discover how his work influenced scientific thought and innovation. Learn more!

[Back to Home](#)