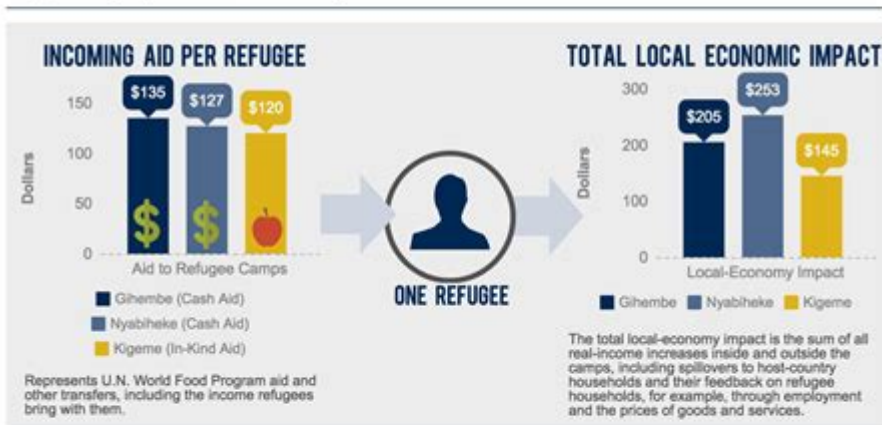


# Economic Impact Of Refugees On Host Communities

## THE ECONOMIC IMPACT OF REFUGEES

A UC Davis-led study looks at the impact that one refugee can have on income within a 10-km (6-mile) radius of three different Congolese refugee camps in Rwanda, finding that aid positively impacts the local economy.



**UC DAVIS**  
UNIVERSITY OF CALIFORNIA

Read the full story and report at <https://www.ucdavis.edu/news/refugees-can-offer-economic-boost-their-host-countries>

UC Davis is a leading public research and teaching university that works around the world to solve our most critical problems.

[ucdavis.edu](https://www.ucdavis.edu)

Follow "UCDavis"



**Economic impact of refugees on host communities** is a complex and multifaceted issue that has garnered significant attention in recent years. As global conflicts and crises continue to displace millions of people worldwide, understanding how these refugees affect local economies is crucial for policymakers, community leaders, and the public. While there are challenges associated with integrating refugees into host communities, numerous studies and real-life examples demonstrate that the economic impact can often be positive, leading to growth and diversification in local economies.

## Understanding the Economic Contributions of Refugees

Refugees are often perceived as a burden on host communities; however, they bring valuable skills, diverse perspectives, and entrepreneurial spirit that can stimulate economic growth. Here are some key areas where refugees contribute to the economy:

### 1. Labor Market Participation

Refugees frequently fill labor shortages in various sectors, particularly in areas where local

populations may not be available or willing to work. Their contributions can be seen in:

- **Filling Job Vacancies:** Many host countries experience labor shortages, particularly in low-skilled jobs. Refugees can help meet this demand.
- **Diverse Skill Sets:** Refugees often come with unique skills and experiences that can enhance productivity and innovation within host communities.
- **Boosting Workforce Diversity:** A diverse workforce can lead to more creativity and problem-solving capabilities in businesses.

## 2. Entrepreneurship and Business Growth

Many refugees possess entrepreneurial ambitions, which can lead to the creation of new businesses and job opportunities. This entrepreneurship results in:

- **Job Creation:** Refugee-owned businesses often employ locals and other refugees, thus boosting the local economy.
- **Economic Diversification:** New businesses can lead to a more diverse economy, reducing reliance on specific industries.
- **Innovation:** Refugees may introduce new products, services, and business practices that can invigorate local markets.

## 3. Contribution to Local Tax Base

As refugees become integrated into the economy, they contribute to the local tax base, which can support public services and infrastructure. This contribution includes:

- **Income Taxes:** Employed refugees pay income taxes, which can be used for community development.
- **Sales Taxes:** Increased consumer spending by refugees contributes to sales tax revenue.
- **Property Taxes:** Refugees purchasing homes or renting properties can increase property tax revenues.

# Challenges Faced by Host Communities

While the economic impact of refugees can be positive, host communities may also face challenges. Understanding these challenges is essential for creating effective integration policies.

## 1. Initial Economic Strain

In the short term, the sudden influx of refugees can strain local resources, including housing, healthcare, and education. This strain can lead to:

- **Increased Demand for Services:** Local services may become overwhelmed, leading to longer wait times and reduced quality.
- **Housing Shortages:** A surge in population can drive up housing prices and create competition for available units.

## 2. Social Tensions and Integration Issues

The integration of refugees can sometimes lead to social tensions within host communities. Factors contributing to this include:

- **Cultural Differences:** Differences in language, customs, and social norms may create misunderstandings.
- **Competition for Resources:** Local populations may feel threatened by the presence of refugees, believing they are competing for jobs or services.

# Mitigating Challenges and Enhancing Positive Impacts

To maximize the economic benefits of refugees while minimizing challenges, host communities can implement several strategies:

## 1. Comprehensive Integration Programs

Effective integration programs can facilitate smoother transitions for refugees and local communities. These programs could include:

- **Language and Skills Training:** Providing language courses and vocational training can enhance employability for refugees.
- **Community Engagement Initiatives:** Encouraging interactions between refugees and locals can foster understanding and reduce tensions.

## 2. Policy Support and Funding

Government support is vital for ensuring that local communities can effectively manage the influx of refugees. This support may involve:

- **Financial Assistance:** Providing funding to local governments and organizations to help manage the costs associated with refugee integration.
- **Incentives for Employers:** Offering tax breaks or subsidies to businesses that hire refugees can encourage workforce integration.

## 3. Leveraging Refugee Skills for Economic Growth

Host communities can actively seek to utilize the skills and talents of refugees to boost economic growth. Strategies might include:

- **Networking Events:** Organizing events that connect refugees with local businesses and entrepreneurs.
- **Showcasing Refugee Contributions:** Highlighting success stories of refugee entrepreneurs can inspire confidence and support from the community.

## Conclusion

The **economic impact of refugees on host communities** is a nuanced topic that encompasses both challenges and opportunities. While initial strains on resources and potential social tensions are valid concerns, the long-term benefits often outweigh these challenges. By recognizing the valuable contributions that refugees make and implementing supportive policies, host communities can create an environment where both locals and refugees thrive. Ultimately, fostering an inclusive economy can lead to stronger, more resilient communities capable of facing future challenges together.

## **Frequently Asked Questions**

### **What are the primary economic benefits of hosting refugees in local communities?**

Hosting refugees can lead to increased labor supply, filling labor shortages in various sectors, stimulating local economies through increased consumption, and contributing to tax revenues.

### **How do refugees contribute to the entrepreneurship landscape in host countries?**

Refugees often start their own businesses, which can create jobs for both themselves and local residents, fostering innovation and enhancing economic diversity in the community.

### **What challenges do host communities face when integrating refugees economically?**

Challenges include competition for jobs with local residents, strain on public services, language barriers, and the need for training programs to help refugees transition into the workforce.

### **How can local governments support the economic integration of refugees?**

Local governments can provide language and vocational training, facilitate access to job markets, offer financial incentives for businesses that hire refugees, and create community support programs.

### **What role does public perception play in the economic impact of refugees on host communities?**

Public perception can significantly influence policy and integration efforts; positive perceptions can lead to supportive measures, while negative perceptions can hinder economic opportunities for refugees and strain community relations.

### **Are there any studies that quantify the economic impact of refugees on host communities?**

Yes, various studies have shown that refugees can contribute positively to local economies, with estimates suggesting that each refugee can generate significant economic output over time through labor and entrepreneurship.

### **How do the economic impacts of refugees differ between urban and rural host communities?**

Urban areas may benefit from a larger labor market and diverse economic opportunities, while rural communities may face challenges due to a lack of jobs and resources, but can also see revitalization through new businesses and population growth.

Find other PDF article:

<https://soc.up.edu.ph/36-tag/files?docid=KWb34-3620&title=las-vegas-aces-practice-facility-address.pdf>

## **Economic Impact Of Refugees On Host Communities**

*Cómo habilitar gpedit.msc en Windows Home [Paso a paso + vídeo]*

Jan 9, 2025 · Aprende cómo habilitar gpedit.msc en Windows 10/11 Home con dos comandos DISM. Solución rápida y vídeo paso a paso incluido.

Cómo usar el 'Editor de directivas de grupo local' (gpedit.msc) ...

Jul 26, 2018 · El editor de políticas de grupo de Windows es una potente herramienta con la cual puedes modificar un montón de opciones semiocultas del sistema. Hoy veremos cómo puedes ...

### **Cómo Habilitar gpedit.msc en Windows 10 Home Edition**

Dec 5, 2024 · Puedes habilitar gpedit.msc (Editor de políticas de grupo) en Windows 10 sin descargar una aplicación de terceros. Lea esta guía.

### **Gpedit.msc en Windows 11: cómo habilitar el editor de directivas**

Descubre cómo activar gpedit.msc en Windows 11 y soluciona errores habituales. Guía completa paso a paso.

### **Cómo Activar GPEDIT.MSC en Windows 10 y Windows 11 en ...**

May 29, 2025 · Si estás intentando ejecutar gpedit.msc y te encuentras con el error de que «Windows no puede encontrar el archivo», no te preocupes. En este artículo de TecnoRed.org, ...

### **Habilitar gpedit.msc en Windows 10 y Windows 11 | Bytex**

Para ello, basta con ejecutar dos simples comandos DISM que se encargan de añadir los paquetes de Group Policy Client Tools y Group Policy Client Extensions. Aquí te dejo los pasos detallados:

### **Cómo acceder y configurar el Editor de directivas de grupo de ...**

El Editor de Directivas de Grupo Local (gpedit.msc) es una utilidad avanzada de administración integrada en Windows que permite modificar políticas del sistema operativo. A través de ella, es ...

Cómo habilitar el Editor de directivas de grupo (gpedit.msc) en ...

Jun 2, 2025 · Sin embargo, existe una forma efectiva, segura y relativamente sencilla de habilitar gpedit.msc en Windows 11 Home.

Cómo abrir el Editor de Políticas de Grupo Local en Windows 11 y ...

Jul 8, 2023 · Escribe « gpedit.msc » en el cuadro de diálogo y pulsa Enter. Se abrirá la ventana del Editor de Políticas de Grupo Local, donde podrás navegar y configurar las diferentes políticas ...

### **Cómo Habilitar Gpedit.msc en Windows 11 Home - Solvetic**

Jun 9, 2022 · Tutorial con vídeo para saber cómo Habilitar Gpedit.msc en Windows 11 Home de manera detallada paso a paso.

**Microsoft campus - Wikipedia**

The Microsoft campus is the corporate headquarters of Microsoft Corporation, located in Redmond, Washington, United States, a part of the Seattle metropolitan area. Microsoft ...

### **Driving directions to Microsoft Headquarters, One Microsoft Way ...**

Realtime driving directions to Microsoft Headquarters, One Microsoft Way, Redmond, based on live traffic updates and road conditions – from Waze fellow drivers.

### **Microsoft Headquarters 1 in Redmond, WA 98052 - 888-725...**

Microsoft Headquarters 1 located at One Microsoft Way, Redmond, WA 98052 - reviews, ratings, hours, phone number, directions, and more.

### *A Guide To The Microsoft Redmond Campus | Built In Seattle*

Nov 12, 2018 · Take a peak at Microsoft's Redmond Campus and find out what life is like at the tech giant's Seattle-area headquarters.

### *Microsoft Corporation, 1 Microsoft Way, Redmond, WA 98052, ...*

Get more information for Microsoft Corporation in Redmond, WA. See reviews, map, get the address, and find directions.

### **Modernizing our Redmond headquarters - news.microsoft.com**

Mar 20, 2025 · As part of our ongoing commitment to our employees and the community in Puget Sound, in 2017, Microsoft announced a significant initiative to modernize our Redmond ...

### *Microsoft · One Microsoft Way, Redmond, WA 98052, USA*

This page provides details on Microsoft, located at One Microsoft Way, Redmond, WA 98052, USA.

### Microsoft Headquarters: A Global Tech Hub in Redmond, ...

The headquarters of Microsoft Corporation is located at One Microsoft Way in Redmond, Washington, USA. This expansive campus has been the global hub for the tech giant since ...

### **Microsoft Headquarters Information - Headquarters List**

Where is the Microsoft Corporate Office? The main campus for the Microsoft headquarters is located in Redmond, Washington. Microsoft Headquarters Address: One Microsoft Way ...

### **Microsoft Corporate Office & Headquarters | Redmond, WA**

Find information on Microsoft headquarters such as corporate phone number, address, website, and consumer reviews.

Explore the economic impact of refugees on host communities and uncover how they can drive growth and innovation. Learn more about this vital issue today!

[Back to Home](#)