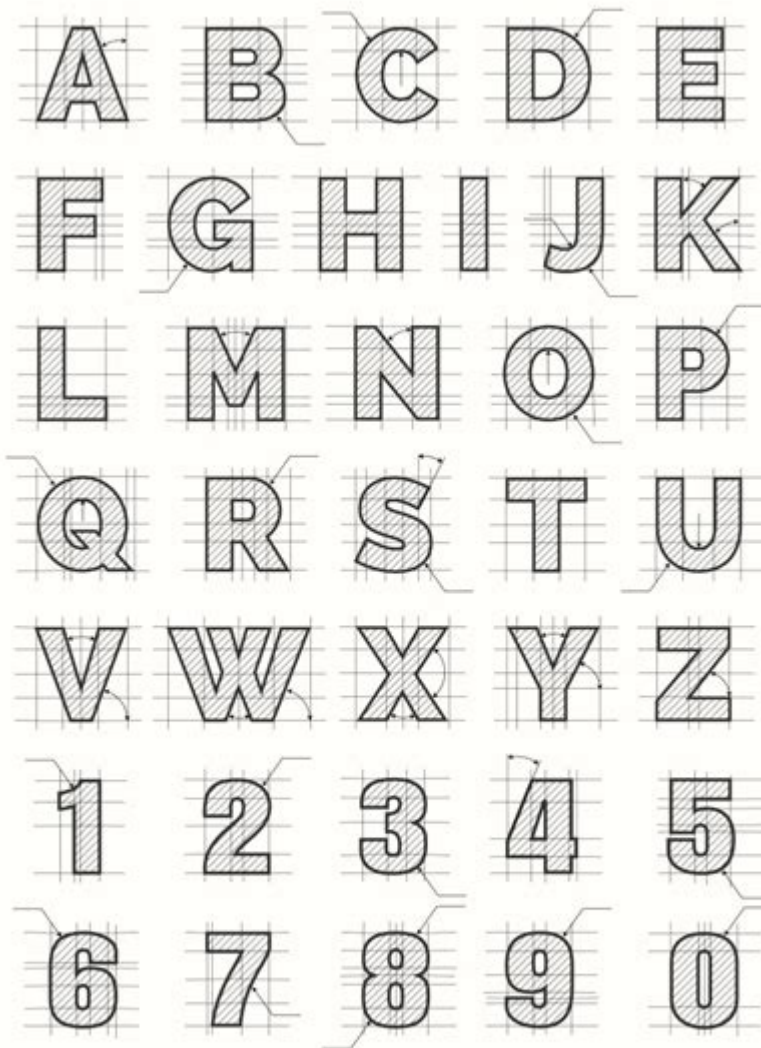


Drafting Alphabet Of Lines Worksheet



VectorStock

VectorStock.com/11366841

Drafting Alphabet of Lines Worksheet

In the realm of technical drawing and drafting, understanding the various lines and their meanings is essential for creating accurate and effective representations of objects and designs. One of the most helpful tools for mastering this skill is the drafting alphabet of lines worksheet. This educational resource provides a structured way to learn, practice, and apply the different types of lines used in drafting. This article will delve into the importance of line types, the components of a drafting alphabet of lines worksheet, and how to effectively use it for both educational and professional purposes.

Understanding the Drafting Alphabet of Lines

The drafting alphabet of lines refers to a standardized system of line types used in technical drawings to convey specific information. Each type of line serves a distinct purpose, and understanding these differences is crucial for anyone involved in drafting or design.

Types of Lines in Drafting

Here are some of the most common types of lines you will encounter in drafting:

1. Continuous Line: Represents visible edges and outlines of objects.
2. Dashed Line: Indicates hidden edges or features not visible in the current view.
3. Dotted Line: Used for center lines and symmetrical features.
4. Chain Line: Denotes boundaries or limits of a specific area.
5. Phantom Line: Shows alternate positions of moving parts or adjacent objects.
6. Break Line: Indicates that a part of an object has been removed in order to shorten the drawing.
7. Construction Line: Thin, light lines used as guides for drawing other lines.

Each of these lines plays a crucial role in conveying information clearly and effectively. Misinterpretation of line types can lead to confusion and errors in design, making it imperative for drafters to familiarize themselves with these conventions.

The Components of a Drafting Alphabet of Lines Worksheet

A drafting alphabet of lines worksheet is typically designed to help learners visualize and practice different line types. It often includes the following components:

1. Line Examples

The worksheet usually contains samples of various line types along with labels explaining their meanings. This visual representation helps reinforce understanding. For instance, you might see:

- A solid line with a caption indicating "Visible Line"
- A dashed line labeled "Hidden Line"
- A dotted line for "Center Line"

2. Practice Sections

Most worksheets include practice sections where learners can replicate the lines themselves. This hands-on approach helps solidify the knowledge gained from observing the examples. The practice sections might be divided into:

- Freehand drawing sections
- Grid-based drawing sections
- Pre-printed templates for tracing

3. Application Exercises

To further enhance learning, the worksheet may include application exercises where students are asked to identify line types in existing drawings or to create their own drawings using the different line types.

Examples of exercises might include:

- Labeling line types in a provided technical drawing.
- Creating a simple object (like a table or chair) using appropriate line types.
- Modifying an existing drawing by adding hidden lines or center lines where necessary.

How to Use a Drafting Alphabet of Lines Worksheet

Using a drafting alphabet of lines worksheet can be very effective, especially for students or professionals looking to refresh their skills. Here are some steps to maximize the benefits of this resource:

1. Familiarize Yourself with Line Types

Before diving into the worksheet, take some time to read about and understand each line type and its purpose. This foundational knowledge will aid your comprehension as you work through the exercises.

2. Observe and Practice

Begin with the examples provided on the worksheet. Observe the differences in line types and their applications. Once you feel comfortable, move on to the practice sections. Focus on getting the line styles as accurate as possible.

3. Apply Your Knowledge

Once you have practiced drawing the lines, apply this knowledge in the exercise sections. Choose a simple drawing to start with and ensure you incorporate the appropriate line types effectively.

4. Review and Reflect

After completing the worksheet, take the time to review your work. Compare your lines with the examples provided. Reflect on any mistakes or areas for improvement. Continuous learning is essential in drafting and design.

Benefits of Using a Drafting Alphabet of Lines Worksheet

Incorporating a drafting alphabet of lines worksheet into your learning process has several benefits:

1. Improved Understanding

The most significant advantage is the enhanced understanding of various line types and their functions. This clarity is essential for creating precise technical drawings.

2. Skill Development

Regular practice through worksheets can help improve your drawing skills, making you more proficient in technical drafting. This skill development can be invaluable in both educational and professional settings.

3. Error Reduction

By mastering line types, you can reduce errors in your drawings. This accuracy is crucial for ensuring that designs are interpreted correctly by others.

4. Preparation for Advanced Concepts

A solid understanding of the drafting alphabet of lines lays the groundwork for more advanced concepts in drafting, such as dimensioning, annotation, and creating complex technical drawings.

Conclusion

In summary, a drafting alphabet of lines worksheet is an essential tool for anyone looking to enhance their drafting skills. By understanding the various types of lines and their applications, practitioners can create more accurate and effective technical drawings. The worksheet serves as both a learning aid and a practice tool, allowing users to familiarize themselves with line types and develop their drawing skills. As you incorporate the use of such worksheets into your learning or teaching regimen, you'll find that your proficiency in drafting will improve significantly, paving the way for future success in the field. Whether you are a student, educator, or professional, embracing the drafting alphabet of lines through structured practice can lead to a deeper understanding and mastery of this vital skill.

Frequently Asked Questions

What is a drafting alphabet of lines worksheet?

A drafting alphabet of lines worksheet is a tool used in technical drawing to teach and practice the different types of lines used in drafting, such as solid lines, dashed lines, and center lines, along with their meanings and applications.

Why is it important to learn the alphabet of lines in drafting?

Learning the alphabet of lines is crucial in drafting because it helps convey information clearly and accurately in technical drawings, ensuring that all viewers understand the representation of different features and elements.

What types of lines are typically included in an alphabet of lines worksheet?

Typically, an alphabet of lines worksheet includes various line types such as object lines, hidden lines, center lines, dimension lines, extension lines, cutting-plane lines, and phantom lines.

How can I create an effective drafting alphabet of lines worksheet?

To create an effective worksheet, include clear examples of each line type, concise definitions, and practice exercises that encourage users to apply their knowledge in drawing scenarios.

Are there any online resources for drafting alphabet of lines worksheets?

Yes, there are various online resources, including educational websites, drafting software tutorials, and downloadable worksheets that provide exercises and examples related to the alphabet of lines in drafting.

What are some common mistakes to avoid when using an alphabet of lines worksheet?

Common mistakes include using incorrect line types in drawings, misunderstanding the purpose of specific lines, and neglecting to maintain consistent line weights, which can lead to confusion in technical communication.

Can the alphabet of lines vary between different fields of drafting?

Yes, the alphabet of lines can vary between different fields such as architectural, mechanical, and civil drafting, as each discipline may emphasize different line types based on specific standards and conventions.

How can I assess my understanding of the alphabet of lines in drafting?

You can assess your understanding by completing practice exercises, seeking feedback on your drawings from instructors or peers, and taking quizzes that test your knowledge of line types and their correct applications.

Find other PDF article:

<https://soc.up.edu.ph/20-pitch/pdf?trackid=aJC19-2407&title=energy-storage-and-transfer-model-worksheets-4.pdf>

Drafting Alphabet Of Lines Worksheet

WHEN DRAFTING THE DECLARATION OF SENTIMENTS THAT WAS ...

Jun 23, 2008 · [that was adopted at the convention], included , , was a call . Core of the sentence: Included was a call. Everything else (the stuff in the brackets): modifiers. Are the modifiers placed correctly relative to the core and the other modifiers?

4 Tips for Creating Your Best Law School Application Resume

Jan 18, 2018 · A law school application resume is a snapshot view of an applicant and lists some data points and details that a personal statement may not.

Telling Your Story: Brainstorming on Your Law School Personal

Apr 10, 2017 · A personal statement is really no more than telling a story—one that illuminates the “you” a law school would be lucky to have in its student body. In this series, a jdMission Senior Consultant will discuss how elements of storytelling can—and should—be applied to your personal statement.

Manhattan Prep LSAT Forum - Q15

Jun 1, 2010 · Also, I am wondering why E is right as "appreciation of the problems of wording involved in drafting..." does it comfort to line 1 as part of "understanding of statutory law"?

Your Business School Timeline - GMAT

Sep 6, 2017 · Here we present a rough business school timeline for the entire MBA application cycle to help candidates better manage the process so that all opportunities are maximized.

WHEN DRAFTING THE DECLARATION OF SENTIMENTS ...

Jun 23, 2008 · [that was adopted at the convention], included , , was a call

4 Tips for Creating Your Best Law School Application Resume

Jan 18, 2018 · A law school application resume is a snapshot view of an applicant and lists some data points and details that a personal statement may not.

Telling Your Story: Brainstorming on Your Law School Personal ...

Apr 10, 2017 · A personal statement is really no more than telling a story—one that illuminates the “you” a law school would be lucky to have in its student body. In this series, a jdMission Senior ...

Manhattan Prep LSAT Forum - Q15

Jun 1, 2010 · Also, I am wondering why E is right as "appreciation of the problems of wording involved in drafting..." does it comfort to line 1 as part of "understanding of statutory law"?

Your Business School Timeline - GMAT

Sep 6, 2017 · Here we present a rough business school timeline for the entire MBA application cycle to help candidates better manage the process so that all opportunities are maximized.

Unlock your drafting skills with our comprehensive drafting alphabet of lines worksheet. Perfect for beginners and pros alike. Learn more and enhance your designs today!

[Back to Home](#)