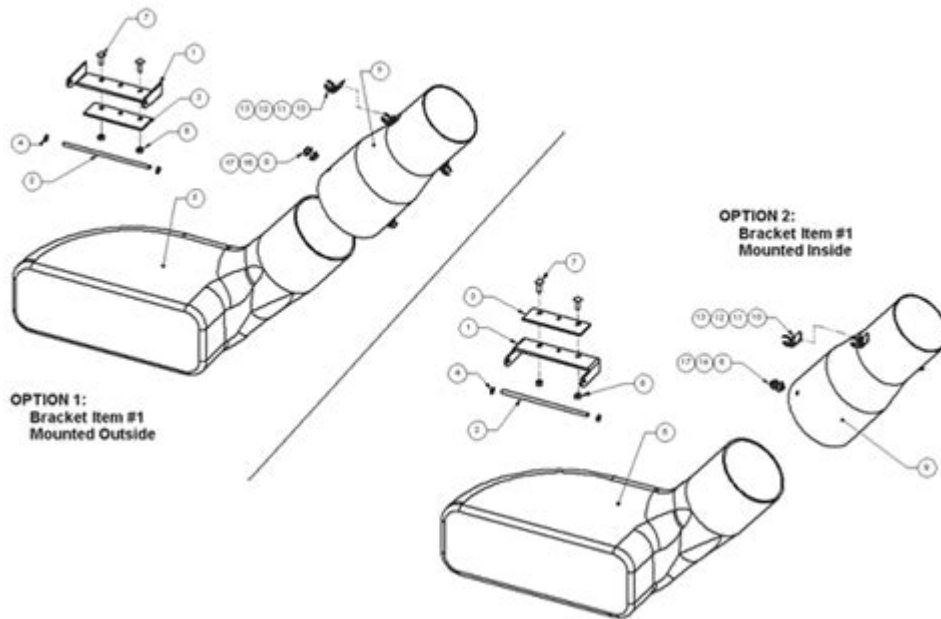


Dr Leaf Vac Parts Diagram

Schematic Diagram - Universal Lawn Deck Adapter



Dr Leaf Vac Parts Diagram is an essential tool for users and technicians alike, providing a visual guide to the various components of a Dr Leaf vacuum system. Understanding the parts diagram is crucial for maintenance, repairs, and ensuring optimal performance of the leaf vacuum. This article will delve into the importance of the parts diagram, describe the main components of a Dr Leaf Vac, explore common issues, and provide maintenance tips to extend the life of your equipment.

Understanding the Dr Leaf Vac Parts Diagram

A parts diagram serves as a reference guide, illustrating each component of the Dr Leaf Vac. It allows users to identify parts quickly, understand their functions, and recognize how they fit together. This knowledge is invaluable for troubleshooting, ordering replacement parts, or performing routine maintenance.

Components of the Dr Leaf Vac

A typical Dr Leaf Vac consists of several key components, each playing a vital role in the overall functionality. Here are the primary parts you will find in a Dr Leaf Vac:

1. **Engine:** The heart of the leaf vac, the engine powers the vacuum system. It is essential to ensure that the engine is well-maintained for optimal

performance.

2. **Impeller:** This component is responsible for creating the vacuum needed to suck up leaves and debris. The impeller's efficiency can greatly affect the performance of the leaf vac.

3. **Hoses:** These are used to direct the flow of air and debris from the collection area into the bag. Hoses are typically flexible and can come in various lengths.

4. **Collection Bag:** The collection bag holds the leaves and debris once they have been vacuumed up. It is essential to check the bag regularly for clogs and to ensure it is not overfilled.

5. **Chassis:** The main frame of the leaf vacuum that houses all other components. A sturdy chassis is crucial for the durability and stability of the unit.

6. **Wheels:** They provide mobility, allowing the user to maneuver the leaf vac easily across different terrains.

7. **Throttle Control:** This component allows the operator to adjust the engine speed and, consequently, the suction power of the leaf vac.

8. **Starter Rope:** Used to start the engine manually, the starter rope is an important part of the ignition system.

9. **Air Filter:** This component ensures that the air entering the engine is clean, which is vital for optimal engine performance.

10. **Exhaust System:** Responsible for venting exhaust gases away from the engine, ensuring the engine runs efficiently and safely.

Importance of Regular Maintenance

Maintaining your Dr Leaf Vac is crucial for ensuring its longevity and efficiency. Regular checks and maintenance can help prevent common problems and extend the life of your equipment.

Common Maintenance Tasks

1. **Check the Oil Level:** Regularly inspect the oil level and change it according to the manufacturer's recommendations. Dirty or low oil can lead to engine damage.

2. **Clean or Replace the Air Filter:** A clogged air filter can reduce engine performance. Clean it regularly and replace it when necessary.

3. **Inspect the Collection Bag:** Ensure the collection bag is clean and free from holes or tears. A damaged bag can affect suction and efficiency.
4. **Examine the Hoses:** Check hoses for cracks or blockages that may impede airflow. Replace any damaged hoses immediately.
5. **Sharpen the Impeller Blades:** Dull blades can reduce efficiency. Sharpen or replace them as needed to maintain optimal performance.
6. **Check the Fuel System:** Ensure that the fuel system is clean and free from debris. Old or contaminated fuel can lead to engine problems.

Troubleshooting Common Issues

Even with regular maintenance, issues can arise. Understanding common problems can help you quickly diagnose and address them.

Common Problems and Solutions

1. **Engine Won't Start:**
 - Check the fuel level and quality.
 - Ensure the starter rope is functioning correctly.
 - Inspect the spark plug for wear or damage.
2. **Loss of Suction:**
 - Check the collection bag for clogs or overfilling.
 - Inspect hoses for blockages or leaks.
 - Ensure the impeller is functioning correctly.
3. **Excessive Vibration:**
 - Check all screws and bolts to ensure they are tight.
 - Inspect the chassis for damage or misalignment.
 - Ensure the impeller is balanced.
4. **Overheating:**
 - Check the oil level and quality.
 - Ensure the air filter is clean.
 - Inspect the exhaust system for blockages.

Ordering Replacement Parts

When maintenance or repairs are needed, having access to a detailed parts diagram can simplify the process of ordering replacement parts. Here are a few tips for ordering parts:

- **Refer to the Parts Diagram:** Use the parts diagram to identify the specific component you need to replace.
- **Check the Model Number:** Ensure that you are ordering parts that are compatible with your specific model of Dr Leaf Vac.
- **Purchase from Authorized Dealers:** To ensure quality and compatibility, order parts from authorized dealers or the manufacturer.
- **Consider Aftermarket Options:** While OEM parts are recommended, there may be aftermarket alternatives available that can save you money.

Conclusion

Understanding the Dr Leaf Vac parts diagram is essential for anyone who owns or maintains this equipment. By familiarizing yourself with the components, performing regular maintenance, and knowing how to troubleshoot common issues, you can ensure that your leaf vacuum operates at peak efficiency. Whether you are a homeowner looking to keep your yard tidy or a professional landscaper, keeping your Dr Leaf Vac in good working condition will save you time and effort in the long run. Investing in proper care and understanding of your equipment will lead to a better experience and more effective leaf management.

Frequently Asked Questions

What is a Dr. Leaf vac parts diagram used for?

A Dr. Leaf vac parts diagram is used to identify and locate various components of the leaf vacuum, aiding in maintenance and repair.

Where can I find a Dr. Leaf vac parts diagram online?

You can find a Dr. Leaf vac parts diagram on the manufacturer's website, in user manuals, or on various DIY repair websites.

What key components are usually highlighted in a Dr. Leaf vac parts diagram?

Key components typically include the motor, blower, collection bag, impeller, and various hoses and fittings.

How can I use a parts diagram for troubleshooting my

Dr. Leaf vac?

You can use the parts diagram to identify any missing or damaged parts, making it easier to troubleshoot issues and perform repairs.

Are there different diagrams for different models of Dr. Leaf vacs?

Yes, there are often specific diagrams for different models, so it's important to refer to the correct one for your specific unit.

Can I buy replacement parts for my Dr. Leaf vac based on the parts diagram?

Yes, you can use the parts diagram to identify the part numbers needed, which can then be used to purchase replacements from retailers or the manufacturer.

What should I do if I can't find a Dr. Leaf vac parts diagram?

If you can't find a parts diagram, you can contact customer support from the manufacturer or check online forums for assistance.

Is it necessary to have a parts diagram for assembling a Dr. Leaf vac?

While not strictly necessary, having a parts diagram can greatly simplify the assembly process and ensure that all components are correctly installed.

Can I create my own parts diagram for a Dr. Leaf vac?

Yes, if you have technical knowledge and access to the vacuum, you can create your own parts diagram, although it may be more practical to use an existing one.

Find other PDF article:

<https://soc.up.edu.ph/37-lead/Book?ID=UqH85-0839&title=life-on-earth-david-attenborough-dvd.pdf>

Dr Leaf Vac Parts Diagram

Prof. Dr. Prof. -

Dr. doctor Doctoral Candidate by the way ...

Install Drive for desktop - Google Workspace Learning Center

Open files on your desktop When you install Drive for desktop on your computer, it creates a drive in My Computer or a ...

Use Google Drive for desktop - Google Drive Help

To easily manage and share content across all of your devices and the cloud, use Google's desktop sync client: Drive ...

How to use Google Drive - Computer - Google Drive Help

Want advanced Google Workspace features for your business? Try Google Workspace today! Google Drive helps ...

Get directions & show routes in Google Maps

You can get directions for driving, public transit, walking, ride sharing, cycling, flight, or motorcycle on Google Maps. If there ...

Prof. Dr. Prof. -

Dr.[doctor] [] [] Doctoral Candidate[] by the way[]
[] ...

Install Drive for desktop - Google Workspace Learning Center

Open files on your desktop When you install Drive for desktop on your computer, it creates a drive in My Computer or a location in Finder named Google Drive. All of your Drive files appear here. ...

Use Google Drive for desktop - Google Drive Help

To easily manage and share content across all of your devices and the cloud, use Google's desktop sync client: Drive for desktop. If you edit, delete or move a file on the Cloud, the same ...

How to use Google Drive - Computer - Google Drive Help

Want advanced Google Workspace features for your business? Try Google Workspace today! Google Drive helps you keep all your files together. You can upload and share your files from ...

Get directions & show routes in Google Maps

You can get directions for driving, public transit, walking, ride sharing, cycling, flight, or motorcycle on Google Maps. If there are multiple routes, the best route to your destination is blue. All other ...

5 Ursachen und Lösungen - Dr. Windows

Windows 11 gilt als modernes und sicheres Betriebssystem. Dennoch berichten Nutzer immer wieder von unerwartetem Datenverlust - plötzlich sind wichtige Dateien, ganze Ordner oder ...

Windows 11 | Dr. Windows

Fragen, Antworten, Tipps und Diskussionen zu Windows 11

In eigener Sache: Todesursache KI - Dr. Windows

Jul 20, 2025 · In eigener Sache: Todesursache KI - eine genauere Einordnung Kevin Kozuszek 21.
Juli 2025 teilen Am letzten Freitag haben wir einen Beitrag zu den Auswirkungen von ...

Manage your storage in Drive, Gmail & Photos - Google Help

When your account reaches its storage limit, you won't be able to upload or create files in Drive, send or receive emails in Gmail, or back up photos or videos to Google Photos. If you're over ...

Dr.Hu - 胡

Jul 2, 2025 · Dr. Hu's Zhihu profile featuring insights, expertise, and contributions to various topics.

Explore our comprehensive guide on Dr Leaf Vac parts diagram. Get detailed insights and tips for maintenance. Learn more to keep your equipment in top shape!

[Back to Home](#)