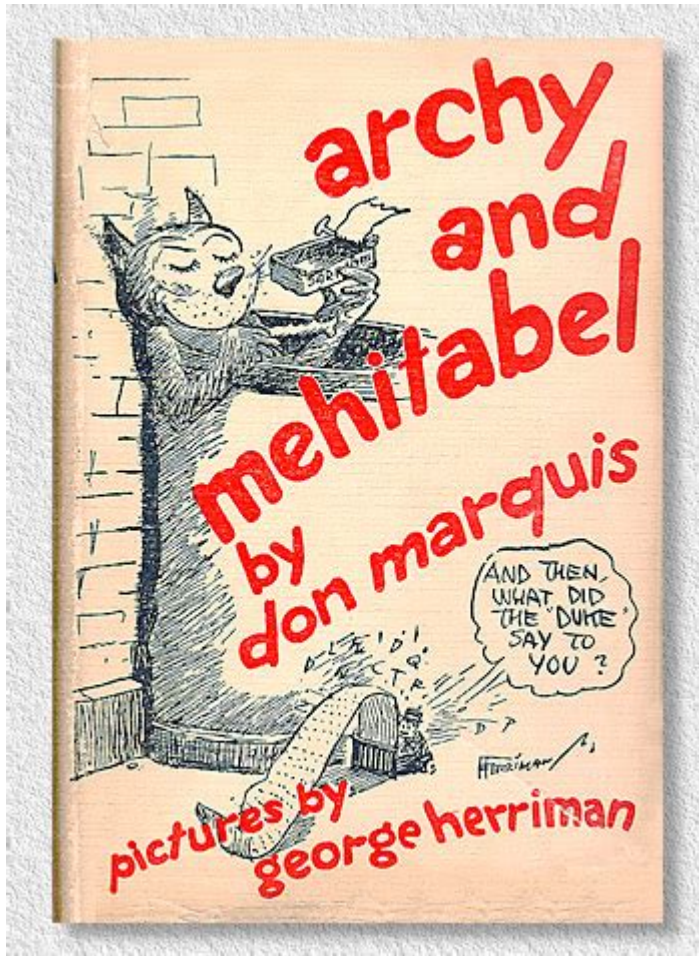


Don Marquis Archy And Mehitabel



Don Marquis' Archy and Mehitabel is a literary creation that has left an indelible mark on American literature. This remarkable duo—Archy, a cockroach with the soul of a poet, and Mehitabel, a carefree alley cat—has captivated readers with their whimsical adventures and poignant reflections on life. Through their unique perspectives, Don Marquis explores themes of existence, love, and the human condition, all while employing humor and wit. This article delves into the origins, characters, themes, and lasting impact of Don Marquis' Archy and Mehitabel.

Origins of Archy and Mehitabel

The Birth of a Literary Icon

Don Marquis, an American journalist and writer, introduced Archy and Mehitabel in the early 1920s. The characters first appeared in a series of humorous columns in *The Evening Sun*, a New York City newspaper. Marquis's innovative use of free verse poetry gave voice to Archy, the cockroach, who

types out his thoughts on a typewriter, and Mehitabel, his feline companion, who embodies a carefree and rebellious spirit.

- Archy: A former poet who, due to a series of unfortunate events, has been reincarnated as a cockroach. He retains his literary prowess and often reflects on various aspects of life, love, and the world around him.
- Mehitabel: An alley cat who lives life with a devil-may-care attitude. She represents the epitome of freedom and spontaneity, often engaging in romantic escapades and social commentary.

The Inspiration Behind the Characters

Marquis drew inspiration from his observations of urban life and the human condition. He created Archy and Mehitabel as a means to explore the complexities of existence, societal norms, and the pursuit of happiness. The juxtaposition of a cockroach and a cat serves to highlight the absurdities of life and the search for meaning.

The Characters of Archy and Mehitabel

Archy: The Poetical Cockroach

Archy's character is a fascinating blend of intellect and existential angst. His experiences as a cockroach provide a unique lens through which he views the world. Some of the notable characteristics of Archy include:

- Philosophical Mindset: Archy often contemplates profound questions about life, death, and the nature of being. His reflections are both humorous and thought-provoking.
- Artistic Flair: Despite his form, Archy possesses a deep appreciation for poetry and art. His verses, penned with a typewriter, are infused with wit and creativity.
- Social Critic: Archy serves as a critic of human behavior, highlighting the absurdities of social conventions and the struggles of the common man.

Mehitabel: The Free-Spirited Cat

Mehitabel is a stark contrast to Archy, representing freedom, spontaneity, and an unrefined approach to life. Her characteristics include:

- Carefree Attitude: Mehitabel's approach to life is characterized by a lack of concern for societal expectations. She revels in her independence and pursues her desires without hesitation.

- Romantic Quests: Mehitabel often engages in romantic escapades, showcasing her flirtatious nature and desire for adventure.
- Philosophical Insights: While she may seem frivolous, Mehitabel occasionally reveals surprising depth, reflecting on her experiences and the nature of love and loss.

Major Themes in Archy and Mehitabel

Existential Reflection

One of the central themes in Don Marquis' Archy and Mehitabel is existentialism. Through Archy's musings, readers are invited to ponder:

- The meaning of life and death.
- The role of fate and chance in shaping one's destiny.
- The search for identity and purpose, even in the most unlikely of circumstances.

Archy's reflections often reveal a deep sense of longing and a desire to understand his place in the world.

The Nature of Freedom

Freedom is another prominent theme, especially embodied by Mehitabel. Her character challenges societal norms and expectations, emphasizing:

- The importance of living authentically.
- The pursuit of happiness, regardless of societal judgment.
- The idea that true freedom comes from within, not dictated by external circumstances.

Mehitabel's adventures serve as a reminder that life is fleeting, and embracing one's desires is crucial.

Love and Relationships

The complexities of love and human relationships are explored through the interactions between Archy and Mehitabel. Key points include:

- The transient nature of love, as seen in Mehitabel's romantic escapades.
- Archy's contemplative perspective on love, viewing it as both beautiful and painful.
- The bond between Archy and Mehitabel, which transcends their differences

and reflects the interconnectedness of all beings.

The Literary Style of Don Marquis

Innovative Use of Free Verse

Marquis's choice to write in free verse is a defining feature of the Archy and Mehitabel series. This style allows for:

- A natural flow of thought, mirroring the spontaneity of Archy's character.
- Flexibility in expression, enabling Marquis to convey humor and depth simultaneously.
- A departure from traditional poetic forms, making the work accessible to a broader audience.

Humor and Satire

The humor in Archy and Mehitabel is both light-hearted and incisive. Marquis employs satire to comment on:

- Human follies and societal absurdities.
- The contradictions of life, particularly in the context of urban living.
- The struggles of the working class, reflecting Marquis's own experiences as a journalist.

The Legacy of Archy and Mehitabel

Influence on American Literature

Don Marquis' Archy and Mehitabel has had a lasting impact on American literature, influencing writers across genres. Some notable aspects of its legacy include:

- Pioneering the use of anthropomorphism in literature, allowing animals to express deeply human concerns.
- Inspiring later works that explore similar themes of existentialism and the absurdity of life.
- Establishing a unique voice in American humor and satire, paving the way for future literary comedians.

Adaptations and Cultural References

The popularity of Archy and Mehitabel has led to various adaptations and cultural references over the years, including:

- Stage adaptations that bring the characters to life through performance.
- Illustrations and comic strips that visualize their adventures.
- References in popular culture, highlighting their relevance in discussions about life and freedom.

Conclusion

In conclusion, Don Marquis' Archy and Mehitabel is more than just a whimsical tale of a cockroach and a cat; it is a profound exploration of life, love, and the human experience. Through the unique lens of its characters, Marquis invites readers to reflect on their existence and embrace the absurdity of life. The enduring legacy of Archy and Mehitabel underscores the power of literature to illuminate the complexities of the human condition while providing a much-needed dose of humor and perspective. As we navigate our own lives, the insights of Archy and the carefree spirit of Mehitabel continue to resonate, reminding us to find joy in the journey and to seek meaning in the chaos.

Frequently Asked Questions

Who are Archy and Mehitabel in Don Marquis' works?

Archy is a free-verse poet and a cockroach who types out his thoughts on a typewriter, while Mehitabel is a cat with a flamboyant personality, representing the carefree and adventurous side of life.

What themes are explored in 'Archy and Mehitabel'?

The works explore themes of life, death, the nature of existence, and the contrast between highbrow and lowbrow culture, often with a humorous and satirical tone.

How does Archy's character reflect human experiences?

Archy's character reflects human experiences through his observations on society, love, ambition, and the struggles of everyday life, all conveyed with wit and insight despite his insect form.

What literary style does Don Marquis use in 'Archy and Mehitabel'?

Don Marquis employs a unique blend of humor, poetry, and prose, primarily using free verse to convey Archy's thoughts, which allows for a playful yet profound exploration of various topics.

What is the significance of the relationship between Archy and Mehitabel?

The relationship between Archy and Mehitabel symbolizes the balance between intellect and instinct, illustrating how different perspectives can coexist and enrich understanding of life.

How do Archy and Mehitabel comment on societal norms?

Through their interactions and conversations, Archy and Mehitabel provide a satirical commentary on societal norms, critiquing human behavior and conventions while embracing individuality and freedom.

In what ways has 'Archy and Mehitabel' influenced modern literature?

The series has influenced modern literature by popularizing the use of animal characters as narrators, blending humor with philosophical insights, and inspiring a playful approach to serious themes.

Find other PDF article:

<https://soc.up.edu.ph/09-draft/pdf?trackid=ktZ35-1689&title=bill-nye-wetlands-worksheet.pdf>

Don Marquis Archy And Mehitabel

¿Cómo se originaron las formas "don" y "doña"?

Feb 6, 2018 · Según el diccionario, las palabras don y doña tienen la siguiente etimología: don, doña Del lat. domīnus 'señor'; la forma f., del lat. domīna. Sin embargo, aunque su origen ...

uso de palabras - ¿Por qué "don, doña" para el nombre pero ...

May 30, 2019 · El uso actual, al menos en España, dicta que "don, doña" se usa normalmente solo para los nombres; y que para los apellidos se debe usar "señor, señora": Don Arturo, pero ...

don't doesn't _

don't doesn't 1 don't

haven't **don't have** -

2 You don't have to knock just walk in. 3 There's plenty of time; we don't have to rush. 4 I haven't touched food for a whole day. ...

don't not

don't not 1. don't not don't = not " " ...

steam -

steam Don't Starve Don't Starve Together

Nothing's gonna change my love for you + _

Nov 1, 2009 · Nothing's gonna change my love for you + Nothing's Gonna Change My Love For You If I had to live my life without you near me ...

¿Qué significa "de complexión recia" en la descripción de Don ...

Mar 26, 2023 · 1 Frisaba la edad de nuestro hidalgo con los cincuenta años; era de complexión recia, seco de carnes, enjuto de rostro, gran madrugador y amigo de la caza. ¿Qué significa ...

LOVE STORY _

Mar 13, 2011 · LOVE STORY Love Story · · We were both young when I first saw you ...

exo Baby Don't Cry -

Jan 24, 2014 · exo Baby Don't Cry yo hi k ...

¿Cómo se originaron las formas "don" y "doña"?

Feb 6, 2018 · Según el diccionario, las palabras don y doña tienen la siguiente etimología: don, doña Del lat. dominus 'señor'; la forma f., del lat. domīna. Sin embargo, aunque su origen ...

uso de palabras - ¿Por qué "don, doña" para el nombre pero ...

May 30, 2019 · El uso actual, al menos en España, dicta que "don, doña" se usa normalmente solo para los nombres; y que para los apellidos se debe usar "señor, señora": Don Arturo, ...

don't doesn't _

don't doesn't 1 don't ...

haven't **don't have** -

2 You don't have to knock just walk in. 3 There's plenty of time; we don't have to rush. 4 I haven't touched food for a whole day. ...

don't not

don't not 1. don't not don't = not " " ...

steam -

steam Don't Starve Don't Starve Together

Nothing's gonna change my love for you + _

Nov 1, 2009 · Nothing's gonna change my love for you + Nothing's Gonna Change My Love For You If I had to live my life without you near me ...

¿Qué significa "de complexión recia" en la descripción de Don ...

Mar 26, 2023 · 1 Frisaba la edad de nuestro hidalgo con los cincuenta años; era de complexión recia, seco de carnes, enjuto de rostro, gran madrugador y amigo de la caza. ¿Qué significa ...

LOVE STORY_

Mar 13, 2011 · LOVE STORYLove Story···We were both young when I first saw you ...

exoBaby Don't Cry -

Jan 24, 2014 · exoBaby Don't Cry yo hi k ...

Explore the whimsical world of Don Marquis' Archy and Mehitabel

[Back to Home](#)