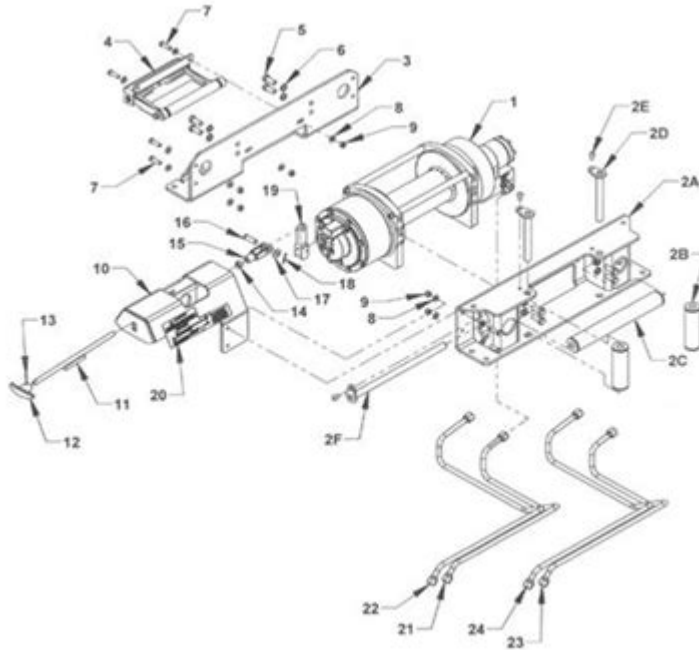


Dp Winch Service Manuals



DP winch service manuals are essential documents that provide detailed information about the maintenance, operation, and troubleshooting of DP winches. These documents are vital for both operators and maintenance personnel to ensure the safety and efficiency of winch operations. This article explores the significance of DP winch service manuals, their key components, and how to effectively use them for optimal winch performance.

Understanding DP Winches

DP winches, or Dynamic Positioning winches, are specialized equipment used in marine and offshore applications. They play a crucial role in maintaining the position of vessels and platforms while conducting operations such as drilling, construction, and servicing underwater equipment. Understanding how these winches operate and the importance of regular maintenance is vital for ensuring their reliability and efficiency.

The Importance of Service Manuals

Service manuals for DP winches serve several essential purposes:

1. **Guidance for Operators:** These manuals provide step-by-step instructions on how to operate the winch safely and efficiently. This is crucial for preventing accidents and ensuring the safety of crew members.
2. **Maintenance Procedures:** Regular maintenance is vital for the longevity of any equipment. Service

manuals outline routine maintenance tasks, schedules, and procedures necessary for keeping the winch in optimal condition.

3. Troubleshooting: In case of malfunction or inefficiency, service manuals offer troubleshooting guides that help identify and rectify issues promptly. This minimizes downtime and reduces operational costs.

4. Compliance and Safety Regulations: Many industries are subject to strict safety regulations. Service manuals often include information on compliance with these regulations, ensuring that all operational practices are within legal and safety standards.

Key Components of DP Winch Service Manuals

DP winch service manuals typically consist of several key components, each designed to provide comprehensive information to users. Understanding these components can enhance the usability of the manual.

1. Introduction

The introduction section provides an overview of the winch, its applications, and the importance of following the manual for safe operation. It may also include general safety precautions and an outline of the manual's organization.

2. Technical Specifications

This section details the technical specifications of the DP winch, including:

- Model and Serial Numbers: Unique identifiers for the specific winch model.
- Load Capacities: Maximum load the winch can handle.
- Dimensions: Physical size and weight of the winch.
- Power Requirements: Electrical specifications necessary for operation.

3. Operation Instructions

Here, operators can find detailed instructions on how to operate the winch, including:

- Start-up Procedures: Step-by-step instructions for safely starting the winch.
- Operating Controls: Information on the various controls and their functions.
- Emergency Procedures: Steps to follow in case of an emergency or equipment failure.

4. Maintenance Procedures

Regular maintenance is crucial for ensuring the winch operates efficiently. This section typically includes:

- Daily Checks: Routine inspections to be conducted before each use.
- Scheduled Maintenance: Recommended intervals for more extensive maintenance tasks (weekly, monthly, annually, etc.).
- Replacement Parts: Information on parts that may require replacement and their specifications.

5. Troubleshooting Guide

When issues arise, the troubleshooting guide is a valuable resource. It often contains:

- Common Issues: A list of frequent problems encountered with DP winches.
- Symptoms and Solutions: Guidance on identifying symptoms and proposing solutions.
- Contact Information: Details for reaching technical support or service personnel if issues cannot be resolved.

6. Diagrams and Illustrations

Visual aids such as diagrams, schematics, and photographs are critical for understanding complex systems. This section may include:

- System Diagrams: Overall layouts of the winch system.
- Component Identification: Images and labels for various parts of the winch.
- Maintenance Instructions: Illustrated steps for maintenance tasks.

7. Safety Information

Safety is paramount when operating heavy machinery. This section typically covers:

- Personal Protective Equipment (PPE): Recommended gear for operators.
- Safety Protocols: Procedures to follow to ensure a safe working environment.
- Emergency Contacts: Essential contacts for emergencies.

Best Practices for Using DP Winch Service Manuals

To maximize the effectiveness of DP winch service manuals, consider the following best practices:

1. Regularly Review the Manual

Operators and maintenance personnel should frequently review the service manual, particularly before performing maintenance or troubleshooting. Familiarity with the manual enhances safety and operational efficiency.

2. Keep the Manual Accessible

Always have the service manual readily available on-site. This ensures that operators can quickly refer to it in case of questions or emergencies.

3. Document Maintenance Activities

Maintain a log of all maintenance activities performed on the winch. This documentation can help track the winch's performance and identify patterns over time, making it easier to predict when more extensive maintenance may be required.

4. Train Personnel

Ensure that all personnel operating or working on the DP winch are trained in the contents of the service manual. This training should include familiarization with operational procedures, maintenance tasks, and safety protocols.

5. Update the Manual as Necessary

Keep the service manual updated with any changes in procedures, parts, or safety regulations. This may involve incorporating notes from maintenance logs or updates from the manufacturer.

Conclusion

In summary, **DP winch service manuals** are critical resources for anyone involved in the operation and maintenance of dynamic positioning winches. They provide essential information that ensures the safe and efficient functioning of these complex machines. By understanding the components of the manual and implementing best practices, operators can enhance safety, reduce downtime, and prolong the lifespan of DP winches. Regular consultation and adherence to the guidelines outlined in the service manual will contribute to successful winch operations in marine and offshore environments.

Frequently Asked Questions

What is a DP winch service manual?

A DP winch service manual is a comprehensive guide that provides instructions on the installation, operation, maintenance, and troubleshooting of DP winches.

Where can I find a DP winch service manual?

DP winch service manuals can typically be found on the manufacturer's website, in the product packaging, or through authorized dealers.

Why is it important to follow a DP winch service manual?

Following a DP winch service manual is crucial for ensuring safe operation, maintaining performance, and extending the lifespan of the winch.

What types of information are included in a DP winch service manual?

A DP winch service manual typically includes specifications, installation procedures, maintenance schedules, troubleshooting tips, and safety guidelines.

Can I download a DP winch service manual online?

Yes, many manufacturers offer downloadable versions of their DP winch service manuals on their official websites.

How often should I refer to the DP winch service manual?

It's advisable to refer to the DP winch service manual regularly, especially during maintenance checks, repairs, or when experiencing operational issues.

Are there different service manuals for various models of DP winches?

Yes, different models of DP winches may have specific service manuals tailored to their unique features and specifications.

What should I do if I lose my DP winch service manual?

If you lose your DP winch service manual, you can usually obtain a replacement by contacting the manufacturer or checking their website for a digital copy.

Find other PDF article:

<https://soc.up.edu.ph/58-view/files?dataid=rwi68-8768&title=the-art-of-happiness-by-the-dalai-lama.pdf>

[Dp Winch Service Manuals](#)

.....HDMI.....DP

.....-----..... ...

HDMIDVIDVAGADP - ..

4DP DPDisplayPort..... DP..... ...

.....DP.....HDMI - ..

DP.....DP.....DP..... DP1.2 ...

.....dpi.....

Apr 1, 2023 ·dpi.....DPI..... ...

..... ...

.....HDMI.....DP.....HDMI+DP..... ...

.....HDMI.....DP

.....-----.....4.....1.....
.....

HDMI DVIDVAGADP - ..

4DP DPDisplayPort..... DP..... 1.....
.....

.....DP.....HDMI - ..

DP.....DP.....DP..... DP1.2.....HDR.....
2k240hz ...

.....dpi.....

Apr 1, 2023 ·dpi.....DPI.....DPI.....
.....

.....

.....HDMI.....DP.....HDMI+DP.....
.....

DPHDMI..... - ..

.....DP.....DP1.0.....HDMI1.3.....2K.....2009DP1.2.....4K 60Hz.....HDMI.....2013.....
2.0.....4K 60hz HDMI DP ...

.....hdmi.....D...

.....Type-C.....+DPDP.....2DP.....3.....USB.....
.....PD ...

HDMI 2.2DP HDMI - ..

DP.....HDMI.....2021.....100..... HDMI 2.2.....8K120Hz.....
.....DSC.....

「DP/DA」_

D/P D/A 1D/P
...

hdmi2.1dp1.4dp -

DPDPViaLAViaLADPHDMI0.2ViaLA
HEVC ...

"Unlock the full potential of your equipment with our comprehensive DP winch service manuals.
Learn more to ensure optimal performance and maintenance today!"

[Back to Home](#)