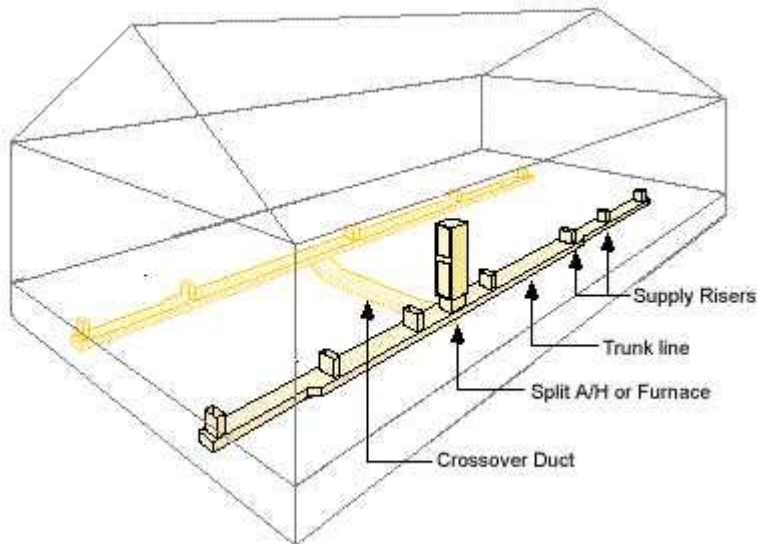


# Double Wide Mobile Home Ductwork Diagram



**Double wide mobile home ductwork diagram** is an essential aspect of understanding how heating and cooling systems function in these types of residences. Proper ductwork installation is critical for ensuring that air is distributed evenly throughout the home, providing comfort and efficiency. In this article, we will discuss the components of ductwork in double wide mobile homes, the significance of a well-planned ductwork diagram, and tips for installation and maintenance.

## Understanding Double Wide Mobile Homes

Double wide mobile homes are manufactured homes that consist of two sections transported separately and then joined together on-site. They provide a spacious living environment, often resembling traditional houses in terms of layout and design. However, their unique construction requires specific considerations for HVAC (heating, ventilation, and air conditioning) systems, particularly ductwork.

## Components of Ductwork

Ductwork is responsible for distributing conditioned air throughout the home. The main components of a ductwork system in a double wide mobile home include:

1. **Main Ducts:** These are the primary channels that carry air from the HVAC unit to various parts of the home.
2. **Branch Ducts:** Smaller ducts that extend from the main ducts to individual rooms, distributing air where it's needed.
3. **Vents:** These are the openings in each room where conditioned air enters. Vents can be floor-

mounted, wall-mounted, or ceiling-mounted.

4. Return Ducts: These ducts allow air to return to the HVAC unit for reconditioning. They are crucial for maintaining balanced air pressure and ensuring efficiency.

5. Plenum: This is a central hub that connects the main duct to the HVAC unit. It helps to distribute air evenly into the main ducts.

## **The Importance of a Ductwork Diagram**

A ductwork diagram is a visual representation of the entire duct system within a double wide mobile home. This diagram is valuable for several reasons:

- Planning and Design: A well-thought-out ductwork diagram helps in the planning and design of the HVAC system, ensuring that all rooms receive adequate airflow.
- Installation Guide: For contractors and DIY enthusiasts, a ductwork diagram serves as a roadmap during installation, helping to avoid common pitfalls.
- Maintenance Reference: A diagram provides a reference point for maintenance and troubleshooting, making it easier to identify issues such as blockages or leaks.
- Energy Efficiency: Properly designed ductwork minimizes energy loss, helping to reduce heating and cooling costs.

## **Elements of a Typical Ductwork Diagram**

A typical ductwork diagram for a double wide mobile home will include the following elements:

- HVAC Unit Location: Indicates where the heating and cooling unit is located in relation to the duct system.
- Main Duct Routing: Shows the path of the main ducts from the HVAC unit to the various areas of the home.
- Branch Duct Layout: Details the layout of branch ducts leading into individual rooms.
- Vent Placement: Marks the locations of all vents and registers throughout the home.
- Return Duct Paths: Illustrates how return ducts are routed back to the HVAC unit.

## **Design Considerations for Ductwork in Double Wide Mobile Homes**

When designing ductwork for a double wide mobile home, several factors must be taken into account:

### **1. Size of the Home**

The size of the home directly affects the size and layout of the duct system. Larger homes require more extensive ductwork to ensure even temperature distribution.

## **2. Insulation**

Proper insulation of ducts is essential to minimize heat loss or gain. Insulated ducts can help maintain the desired temperature without overworking the HVAC system.

## **3. Airflow Requirements**

Each room in a mobile home may have different airflow requirements based on its size and usage. It is essential to calculate the required airflow for each room to ensure comfort.

## **4. Local Building Codes**

Always check local building codes and regulations when designing ductwork. Compliance with these codes is critical for safety and may affect the efficiency of the heating and cooling system.

## **Installation Tips for Ductwork**

Installing ductwork in a double wide mobile home can be a complex task. Here are some tips to ensure successful installation:

### **1. Plan Carefully**

Before starting installation, create a detailed ductwork diagram. Consider the layout of the home and the locations of the HVAC unit, vents, and returns.

### **2. Use Quality Materials**

Invest in high-quality duct materials to ensure durability and efficiency. Materials like galvanized steel, aluminum, or even insulated flexible ducts can provide excellent performance.

### **3. Seal Ducts Properly**

Use appropriate sealants and duct tape to seal joints and connections. This prevents air leaks, maximizing energy efficiency.

## **4. Position Vents Strategically**

Ensure that vents are placed in areas where air can flow freely. Avoid placing vents behind furniture or in corners where airflow may be obstructed.

## **5. Consider Accessibility**

Design the duct system so that it is accessible for future maintenance. Avoid hard-to-reach areas that could complicate repairs or inspections.

# **Maintenance of Ductwork**

Proper maintenance of ductwork in a double wide mobile home is crucial for longevity and performance. Here are some maintenance tips:

## **1. Schedule Regular Inspections**

Have a professional inspect the duct system at least once a year to identify potential issues such as leaks or blockages.

## **2. Clean Ducts Periodically**

Dust and debris can accumulate in ducts over time. Consider having them cleaned every few years to maintain airflow and indoor air quality.

## **3. Change Air Filters Regularly**

Replace air filters in the HVAC system according to the manufacturer's recommendations. Clogged filters can impede airflow and reduce efficiency.

## **4. Monitor for Signs of Damage**

Regularly check for signs of damage or wear, such as rust, holes, or disconnected sections. Address any issues promptly to prevent further complications.

# Conclusion

Understanding the double wide mobile home ductwork diagram is crucial for anyone involved in the installation or maintenance of HVAC systems in these homes. A well-designed ductwork system not only enhances comfort but also promotes energy efficiency, ultimately saving homeowners money on energy bills. By planning carefully, using quality materials, and adhering to proper maintenance practices, you can ensure that your ductwork remains efficient and effective for years to come. Whether you are a homeowner, contractor, or maintenance technician, having a comprehensive understanding of ductwork is invaluable for achieving optimal performance in double wide mobile homes.

## Frequently Asked Questions

### **What is a double wide mobile home ductwork diagram?**

A double wide mobile home ductwork diagram is a visual representation that illustrates the layout and design of the heating, ventilation, and air conditioning (HVAC) duct system in a double wide mobile home, showing the placement of ducts, vents, and connections.

### **Why is it important to have a ductwork diagram for a double wide mobile home?**

Having a ductwork diagram is essential for understanding the airflow system, ensuring proper installation, maintenance, and troubleshooting of the HVAC system, which can improve efficiency and comfort within the home.

### **What are the common components shown in a double wide mobile home ductwork diagram?**

Common components include supply ducts, return ducts, vents, plenum boxes, and the furnace or air conditioning unit, all of which work together to distribute conditioned air throughout the mobile home.

### **How can I create a ductwork diagram for my double wide mobile home?**

To create a ductwork diagram, start by measuring the layout of your home, identify the location of HVAC units, sketch the placement of ducts and vents, and use symbols to represent different components. Software tools or templates can also assist in the design process.

### **What are the common issues related to ductwork in double wide mobile homes?**

Common issues include leaks, poor insulation, incorrect sizing, and blockages, which can lead to inefficient heating and cooling, increased energy bills, and discomfort within the home.

# Can I modify the ductwork in my double wide mobile home?

Yes, modifications can be made to the ductwork in a double wide mobile home, but it is important to consult with an HVAC professional to ensure that changes comply with building codes and do not negatively impact the system's performance.

Find other PDF article:

<https://soc.up.edu.ph/24-mark/pdf?ID=rZG04-4405&title=generalized-linear-models-for-insurance-d ata.pdf>

## Double Wide Mobile Home Ductwork Diagram

**c** float double -

C float double double float float ...

**C** double\*\* double (\*) [5] -

Nov 24, 2019 · double\*\* double\* double [5] double\* ...

double\_

int float double int float int double ...

double scanf %lf printf %f?

Feb 7, 2017 · double 8 4 float double int long ...

**double** **long double** -

The long double function prototypes are identical to the prototypes for their double counterparts, except that the ...

**c** float double -

C float double double float float

3.1415926535 float ...

**C** double\*\* double (\*) [5] -

Nov 24, 2019 · double\*\* double\* double [5] double\* short long ...

double\_

int float double int float int double 10 float ...

double scanf %lf printf %f?

Feb 7, 2017 · double 8 4 float double int long 4 float double ...

**double** **long double** -

The long double function prototypes are identical to the prototypes for their double counterparts,

except that the longdouble data type replaces the double data type. The long double versions ...

~~~~~ ...

You have slain an enemy. Double Kill Triple Kill Quadra Kill Penta Kill Ace (LOL) (Riot ...

double triple quatra penta hexa....10~

“double triple quatra penta hexa....”double10 2double3triple4 quatra5penta6hexa7hepta8octa9 ...

~~~~~ -

~~~~~float4327double8 64 ...

“King size”“Queen size”\_

DOUBLE SIZE:74X54 (188X137 (TWIN SIZE:74X39 (188X99 (King sizeQueen size ...

SPDTDPDT2SPDT\_

1. SPDTSingle Pole Double Throw 2. DPDTDouble Pole Double Throw 3. 2SPDT2Single Pole Double ...

Discover how to optimize your double wide mobile home with our comprehensive ductwork diagram. Get tips and insights to enhance your HVAC system today!

[Back to Home](#)