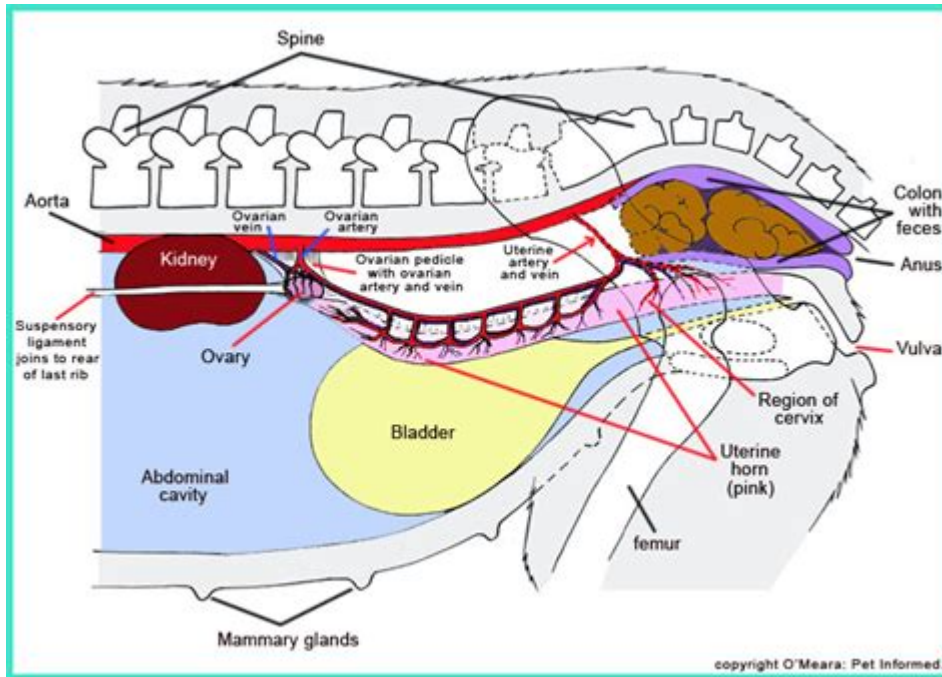


Dog Anatomy Female Belly



Dog anatomy female belly is a fascinating subject that encompasses various aspects of the female canine's physiology, particularly concerning reproduction, digestion, and overall health. Understanding the structure and function of a female dog's belly is essential for pet owners, veterinarians, and dog enthusiasts alike. This article will delve into the anatomy of the female dog's belly, its functions, common health issues, and care tips.

Understanding the Anatomy of the Female Dog's Belly

The belly of a female dog, also known as the abdomen, is an intricate system of organs, muscles, and tissues. It plays a crucial role in several bodily functions, including digestion, reproduction, and waste elimination.

Key Components of the Female Dog's Abdomen

1. **Skin and Fur:** The outer layer of the belly is composed of skin, which is covered in fur. The skin contains hair follicles, sweat glands, and sebaceous glands that help regulate body temperature and maintain skin health.
2. **Muscles:** The abdominal wall consists of several muscle layers, including the external oblique, internal oblique, and transversus abdominis muscles. These muscles provide support and protection to the internal organs and help with movement.
3. **Digestive Organs:**
 - **Stomach:** The stomach is responsible for breaking down food into a semi-liquid form, which then

passes to the intestines for nutrient absorption.

- Small Intestine: This organ continues the digestive process, absorbing nutrients and minerals from food.

- Large Intestine: The large intestine absorbs water and electrolytes, forming waste products for elimination.

4. Reproductive Organs: The reproductive system in female dogs includes:

- Ovaries: These organs produce eggs and hormones such as estrogen and progesterone.

- Uterus: The uterus is where the fertilized egg implants and develops during pregnancy.

- Vagina: This canal connects the external genitalia to the uterus and facilitates mating and birthing.

5. Urinary System: The bladder and urethra are part of the urinary system, responsible for storing and excreting urine.

Functions of the Female Dog's Belly

The belly serves multiple critical functions in female dogs, including:

1. Digestion

The primary role of the abdominal organs is to facilitate digestion. The process begins in the stomach, where food is mixed with digestive juices, followed by nutrient absorption in the intestines. A healthy digestive system is vital for the overall health of the dog.

2. Reproduction

The reproductive organs play a significant role in the female dog's ability to reproduce. Hormonal changes during the heat cycle prepare the body for potential pregnancy. If mating occurs, the uterus nurtures the developing pups until they are ready to be born.

3. Waste Elimination

The urinary system within the abdomen is responsible for filtering waste from the blood and excreting it as urine. The digestive system also plays a role in eliminating solid waste from the body.

Common Health Issues Affecting the Female Dog's Belly

Understanding potential health issues can help pet owners recognize early signs of trouble. Some common conditions affecting the female dog's belly include:

1. Pyometra

Pyometra is a severe infection of the uterus that can occur in unspayed female dogs. Symptoms may include:

- Increased thirst and urination
- Vomiting
- Lethargy
- Abdominal swelling

This condition requires immediate veterinary attention and often necessitates surgery.

2. Mammary Tumors

Female dogs are susceptible to mammary tumors, especially if they are not spayed. Regular veterinary check-ups can help detect these tumors early. Signs may include:

- Lumps in the mammary glands
- Swelling or inflammation

3. Gastric Dilatation-Volvulus (Bloat)

Also known as bloat, this condition occurs when the stomach fills with gas and twists on itself. It is a life-threatening emergency. Symptoms include:

- Distended abdomen
- Unproductive retching
- Restlessness and pacing

4. Obesity

Obesity can lead to various health problems, including diabetes and joint issues. A dog's belly can become distended due to excessive weight, making it crucial to maintain a healthy diet and exercise routine.

Care Tips for a Healthy Female Dog's Belly

Maintaining the health of a female dog's belly involves regular veterinary care, proper nutrition, and appropriate exercise. Here are some tips for ensuring your dog's abdominal health:

1. Regular Veterinary Check-ups

Routine veterinary visits allow for early detection of potential health issues. Vaccinations, parasite

control, and dental care are essential components of preventive health care.

2. Balanced Diet

Feed your dog a nutritious and balanced diet tailored to her age, size, and activity level. Consult your veterinarian for recommendations on the best food options.

3. Regular Exercise

Regular physical activity helps maintain a healthy weight and supports overall digestive health. Engage your dog in daily walks, playtime, and mental stimulation.

4. Spaying

Spaying your female dog can prevent various reproductive health issues, including pyometra and mammary tumors. Consult your veterinarian for the best timing and benefits of spaying.

5. Monitor Weight

Keep an eye on your dog's weight and body condition. If you notice any changes, consult your veterinarian for advice on diet and exercise adjustments.

Conclusion

Understanding **dog anatomy female belly** is essential for promoting the health and well-being of female dogs. By familiarizing yourself with the critical components of the abdomen, its functions, common health issues, and care tips, you can ensure that your furry friend remains healthy and vibrant. Regular veterinary visits, a balanced diet, and appropriate exercise can help prevent many health issues, allowing your female dog to live a long and happy life.

Frequently Asked Questions

What are the main anatomical features of a female dog's belly?

A female dog's belly includes the abdominal cavity, which houses vital organs such as the stomach, intestines, liver, and reproductive organs. The abdominal wall is composed of muscles and connective tissue, while the skin covers and protects the underlying structures.

How can I tell if my female dog's belly is swollen?

Swelling in a female dog's belly can be identified by looking for an unusual bulge or distention, feeling for firmness or tenderness when gently pressing on the abdomen, and observing changes in her behavior, such as lethargy or discomfort.

What are common health issues related to a female dog's belly?

Common health issues may include pyometra (a uterine infection), ovarian cysts, pregnancy complications, or digestive disorders. It's important to monitor for symptoms like vomiting, diarrhea, or unusual behavior and consult a veterinarian if concerns arise.

How does spaying affect a female dog's belly anatomy?

Spaying removes the ovaries and usually the uterus, leading to changes in hormone levels and the elimination of heat cycles. The abdominal wall will heal post-surgery, and while the external appearance may change, the internal anatomy will be permanently altered.

What should I feed my pregnant female dog to support her belly health?

A pregnant female dog should be fed a high-quality, nutrient-rich diet that includes proteins, fats, vitamins, and minerals to support her health and the development of her puppies. Consult with a veterinarian for specific dietary recommendations.

Find other PDF article:

<https://soc.up.edu.ph/34-flow/Book?dataid=TwX60-3326&title=isosceles-and-equilateral-triangle-worksheet-answer-key.pdf>

Dog Anatomy Female Belly

DogForum.de das große rasseunabhängige Hundeforum

DogForum.de das große rasseunabhängige Hundeforum Großes rasseunabhängiges Hundeforum mit zahlreichen Themen rund um Hunde, Hundeerziehung, Medizin, Hundesport und Hundeernährung sowie Giftködern und Warnungen.

DOG (狗) 狗 - Cambridge Dictionary

DOG□□□□, □□□□□□□□□□□□□□□□□□□□, □, □□□□□□□□□□;□□□, □□, □□, □□;□□, □□, □□□□□□□□□□

Forum - DogForum.de das große rasseunabhängige Hundeforum

4 days ago · Großes rasseunabhängiges Hundeforum mit zahlreichen Themen rund um Hunde, Hundeerziehung, Medizin, Hundesport und Hundeernährung.

dog puppy

dog puppy "Dog"

-

APP 3D APP 7. MyFreeMp3

dog puppy -

nine nine dog puppy b23.tv/Lzcrm18 21

27

Sep 22, 2022 · 27

DOG | Cambridge English Dictionary

DOG, DOG: 1. a common animal with four legs, especially kept by people as a pet or to hunt or guard things....

DOG | translate English to German - Cambridge Dictionary

DOG translate: der Hund, Rüde-..., nachspüren. Learn more in the Cambridge English-German Dictionary.

DOG | translation to Mandarin Chinese: Cambridge Dict.

DOG translations: , , , ...

DogForum.de das große rasseunabhängige Hundeforum

DogForum.de das große rasseunabhängige Hundeforum Großes rasseunabhängiges Hundeforum mit zahlreichen Themen rund um Hunde, Hundeerziehung, Medizin, Hundesport und Hundeernährung sowie Giftködern warungen.

DOG () - Cambridge Dictionary

DOG, , , ; , , , ; , , ,

Forum - DogForum.de das große rasseunabhängige Hundeforum

4 days ago · Großes rasseunabhängiges Hundeforum mit zahlreichen Themen rund um Hunde, Hundeerziehung, Medizin, Hundesport und Hundeernährung.

dog puppy

dog puppy "Dog"

-

APP 3D APP 7. MyFreeMp3

dog puppy -

nine nine dog puppy b23.tv/Lzcrm18 21

27

Sep 22, 2022 · 27

DOG | Cambridge English Dictionary

DOG 狗, 犬, DOG 犬 狗: 1. a common animal with four legs, especially kept by people as a pet or to hunt or guard things.... 狗狗 狗狗.

DOG | translate English to German - Cambridge Dictionary

DOG translate: der Hund, Rüde-..., nachspüren. Learn more in the Cambridge English-German Dictionary.

DOG | translation to Mandarin Chinese: Cambridge Dict.

DOG translations: $\square\square$, $\square\square\square\square\square\square\square\square\square\square\square\square\square\square\square\square$, \square , $\square\square\square\square\square\square\square\square\square$; $\square\square\square$, $\square\square$, $\square\square$, $\square\square$...

Explore the fascinating details of dog anatomy

[Back to Home](#)