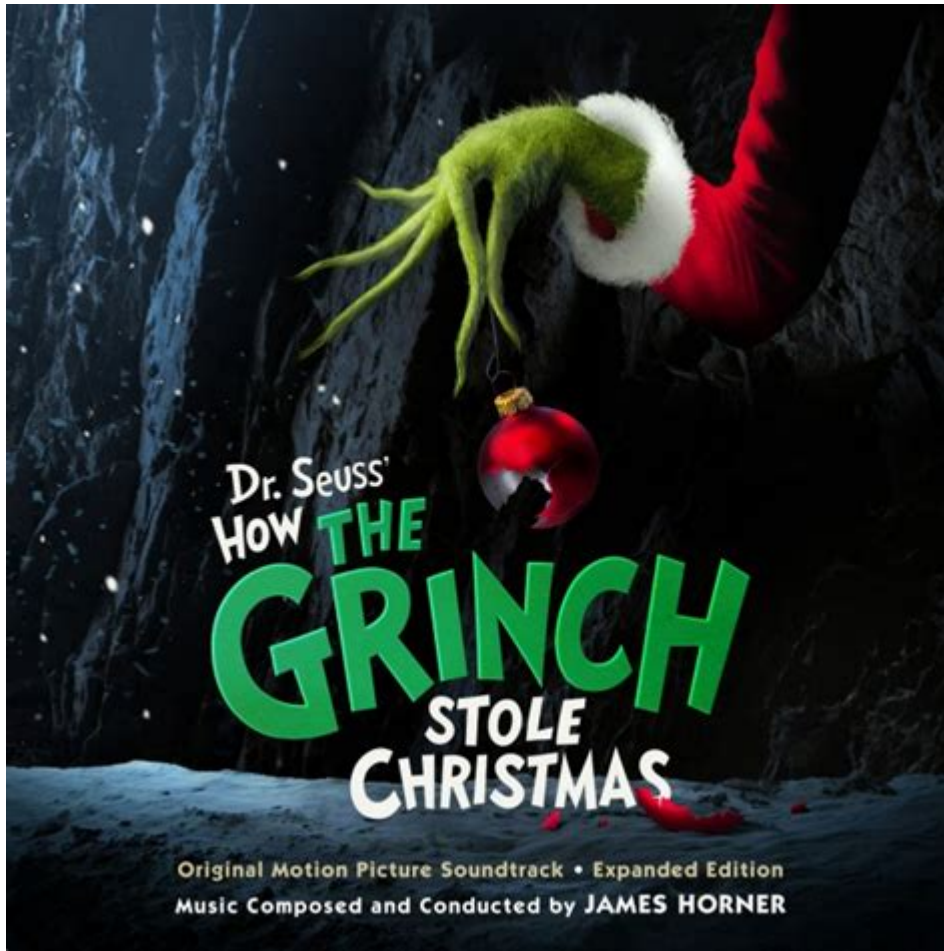


# Dr Seuss The Grinch Who Stole Christmas



**Dr. Seuss's The Grinch Who Stole Christmas** is a timeless holiday tale that has captivated audiences since its publication in 1957. Written and illustrated by Theodor Seuss Geisel, better known as Dr. Seuss, this story has become synonymous with the Christmas spirit, exploring themes of redemption, the true meaning of Christmas, and the importance of community. The narrative follows the Grinch, a bitter, green creature who despises the holiday season and devises a plan to steal Christmas from the Whos of Whoville. Through whimsical rhymes and imaginative illustrations, Dr. Seuss crafts a narrative that resonates with both children and adults, making it a beloved classic that is celebrated annually.

## Overview of the Story

The Grinch, who lives on Mount Crumpit, is known for his disdain for Christmas and the joyful Whos who celebrate it. His heart is "two sizes too small," leading him to feel isolated and resentful. The story begins with the Whos preparing for Christmas, singing and celebrating, which irritates the Grinch to no end.

In a fit of anger and jealousy, the Grinch hatches a plan to ruin Christmas for the Whos. He disguises himself as Santa Claus and, with the help of his loyal but naive dog Max, sets out to steal all the Christmas decorations,

presents, and food from the Whos' homes.

However, on Christmas morning, the Grinch is taken aback when he hears the Whos singing joyfully despite the absence of presents. This moment becomes a turning point for the Grinch, leading him to realize that Christmas is not about material possessions but rather about love, community, and togetherness.

## **Character Analysis**

### **The Grinch**

The Grinch is the central character of the story, embodying themes of transformation and redemption. His initial bitterness represents the negative aspects of the holiday season, such as consumerism and selfishness. However, his character arc is one of growth; his heart expands, both literally and metaphorically, as he learns to embrace the spirit of Christmas.

Key characteristics of the Grinch include:

- Isolation: The Grinch's self-imposed solitude reflects his emotional state and disdain for the Whos.
- Cunning: His clever plan to steal Christmas showcases his intelligence, albeit used for nefarious purposes.
- Redemption: The Grinch's change of heart is a powerful message about the potential for personal transformation.

### **The Whos**

The Whos of Whoville represent the joy and cheer of the Christmas season. Their unwavering spirit and love for each other serve as a stark contrast to the Grinch's initial negativity. Key attributes include:

- Community: The Whos embody the importance of coming together during the holiday season, regardless of material possessions.
- Joyfulness: Their ability to sing and celebrate even after losing their presents highlights the essence of Christmas.
- Forgiveness: The Whos ultimately accept the Grinch and invite him to join their celebrations, showcasing their capacity for forgiveness and inclusivity.

## **Thematic Elements**

Dr. Seuss's *The Grinch Who Stole Christmas* is rich in themes that resonate with readers of all ages. Some of the most prominent themes include:

### **The True Meaning of Christmas**

The story challenges the notion that Christmas is solely about gifts and material wealth. Instead, it emphasizes the importance of love, family, and community, suggesting that the spirit of Christmas lies in togetherness and kindness.

## **Transformation and Redemption**

The Grinch's transformation is central to the narrative, illustrating that it is never too late to change one's perspective and embrace love and joy. This theme encourages readers to reflect on their own lives and the potential for personal growth.

## **Consumerism vs. Simplicity**

The Grinch's initial plan to steal Christmas reflects the excesses of consumerism, while the Whos' joyful singing after losing their possessions highlights the beauty of simplicity and the true essence of the holiday spirit.

## **Illustrations and Style**

Dr. Seuss's unique artistic style is a hallmark of *The Grinch Who Stole Christmas*. His whimsical illustrations, characterized by vibrant colors and exaggerated forms, bring the story to life. The Grinch himself is depicted with a distinctive green hue and a mischievous grin, while the Whos are illustrated with round faces and festive attire.

The rhythmic and rhyming text adds to the story's charm, making it enjoyable for both children and adults. Dr. Seuss's use of playful language and inventive wordplay enhances the reading experience, allowing for a captivating storytelling session.

## **Cultural Impact and Adaptations**

*The Grinch Who Stole Christmas* has had a significant cultural impact since its release, leading to various adaptations across different media. Some notable adaptations include:

1. **Animated Special (1966):** This classic television special features the voice of Boris Karloff as both the narrator and the Grinch. Its faithful rendition of the story, coupled with catchy songs like "You're a Mean One, Mr. Grinch," has solidified its status as a holiday staple.
2. **Live-Action Film (2000):** Starring Jim Carrey as the Grinch, this adaptation offers a unique take on the story, incorporating additional backstory and humor. While it received mixed reviews, it introduced the Grinch to a new generation of fans.
3. **Musical Adaptations:** The story has also been adapted into stage musicals, allowing audiences to experience the Grinch's tale through live performances.

filled with music and dance.

4. Merchandising: The Grinch has become a beloved character in holiday merchandising, with various products ranging from toys to clothing, further embedding him into popular culture.

## **Conclusion**

Dr. Seuss's *The Grinch Who Stole Christmas* remains a cherished holiday classic that continues to resonate with audiences worldwide. Through its engaging narrative, memorable characters, and profound themes, the story emphasizes the importance of love, community, and the true spirit of Christmas. The Grinch's journey from bitterness to joy serves as a reminder that anyone can change for the better, making it a timeless tale that encourages us to embrace the holiday season with open hearts. As we gather with loved ones during this festive time, we can reflect on the lessons learned from the Grinch and strive to embody the spirit of generosity, kindness, and togetherness that defines the true meaning of Christmas.

## **Frequently Asked Questions**

### **What is the main theme of 'Dr. Seuss's The Grinch Who Stole Christmas'?**

The main theme is the importance of community, kindness, and the true spirit of Christmas, which transcends material gifts.

### **How does the Grinch's character evolve throughout the story?**

Initially, the Grinch is portrayed as a bitter and lonely character who despises Christmas, but by the end, he experiences a change of heart, realizing the joy of giving and belonging.

### **What literary techniques does Dr. Seuss use in 'The Grinch Who Stole Christmas'?**

Dr. Seuss employs rhyme, whimsical language, and vivid illustrations to create a playful yet impactful narrative that engages readers of all ages.

### **Why has 'The Grinch Who Stole Christmas' remained popular over the years?**

Its timeless message about love, generosity, and the spirit of Christmas, combined with memorable characters and catchy rhymes, makes it a beloved classic that resonates with audiences every holiday season.

### **What role does Cindy Lou Who play in the story?**

Cindy Lou Who represents innocence and the embodiment of the Christmas spirit; her kindness and belief in the goodness of the Grinch help catalyze his transformation.

How has 'The Grinch Who Stole Christmas' been adapted in popular culture?

The story has been adapted into various formats, including animated specials, live-action films, and stage productions, each bringing new interpretations while preserving the original message.

Find other PDF article:

<https://soc.up.edu.ph/38-press/files?dataid=WVf36-7322&title=logics-puzzle-answer-key.pdf>

## Dr Seuss The Grinch Who Stole Christmas

Prof. Dr. □ Prof.□□□□□□ - □□

`Dr.[doctor]`

`[PhD] Doctoral Candidate`

`by the way`

`... ..`

## Install Drive for desktop - Google Workspace Learning Center

Open files on your desktop When you install Drive for desktop on your computer, it creates a drive in My Computer or a location in Finder named Google Drive. All of your Drive files appear here. ...

*Use Google Drive for desktop - Google Drive Help*

To easily manage and share content across all of your devices and the cloud, use Google's desktop sync client: Drive for desktop. If you edit, delete or move a file on the Cloud, the same ...

## How to use Google Drive - Computer - Google Drive Help

Want advanced Google Workspace features for your business? Try Google Workspace today! Google Drive helps you keep all your files together. You can upload and share your files from ...

**Get directions & show routes in Google Maps**

You can get directions for driving, public transit, walking, ride sharing, cycling, flight, or motorcycle on Google Maps. If there are multiple routes, the best route to your destination is blue. All other ...

## 5 Ursachen und Lösungen - Dr. Windows

Windows 11 gilt als modernes und sicheres Betriebssystem. Dennoch berichten Nutzer immer wieder von unerwartetem Datenverlust - plötzlich sind wichtige Dateien, ganze Ordner oder ...

Windows 11 | Dr. Windows

Fragen, Antworten, Tipps und Diskussionen zu Windows 11

## In eigener Sache: Todesursache KI - Dr. Windows

Jul 20, 2025 · In eigener Sache: Todesursache KI - eine genauere Einordnung Kevin Kozuszek 21.  
Juli 2025 teilen Am letzten Freitag haben wir einen Beitrag zu den Auswirkungen von ...

Manage your storage in Drive, Gmail & Photos - Google Help

When your account reaches its storage limit, you won't be able to upload or create files in Drive, send or receive emails in Gmail, or back up photos or videos to Google Photos. If you're over ...

Jul 2, 2025 · Dr. Hu's Zhihu profile featuring insights, expertise, and contributions to various topics.

[illegible]

Open files on your desktop When you install Drive for desktop on your computer, it creates a drive in My Computer or a location in Finder named Google Drive. All of your Drive files appear ...

To easily manage and share content across all of your devices and the cloud, use Google's desktop sync client: Drive for desktop. If you edit, delete or move a file on the Cloud, the same ...

Want advanced Google Workspace features for your business? Try Google Workspace today! Google Drive helps you keep all your files together. You can upload and share your files from ...

You can get directions for driving, public transit, walking, ride sharing, cycling, flight, or motorcycle on Google Maps. If there are multiple routes, the best route to your destination is blue. All ...

Windows 11 gilt als modernes und sicheres Betriebssystem. Dennoch berichten Nutzer immer wieder von unerwartetem Datenverlust - plötzlich sind wichtige Dateien, ganze Ordner oder ...

## Fragen, Antworten, Tipps und Diskussionen zu Windows 11

Jul 20, 2025 · In eigener Sache: Todesursache KI - eine genauere Einordnung Kevin Kozuszek 21.  
Juli 2025 teilen Am letzten Freitag haben wir einen Beitrag zu den Auswirkungen von ...

When your account reaches its storage limit, you won't be able to upload or create files in Drive, send or receive emails in Gmail, or back up photos or videos to Google Photos. If you're over ...

Jul 2, 2025 · Dr. Hu's Zhihu profile featuring insights, expertise, and contributions to various topics.

Discover the magic of Dr. Seuss's "The Grinch Who Stole Christmas." Uncover its themes

[Back to Home](#)